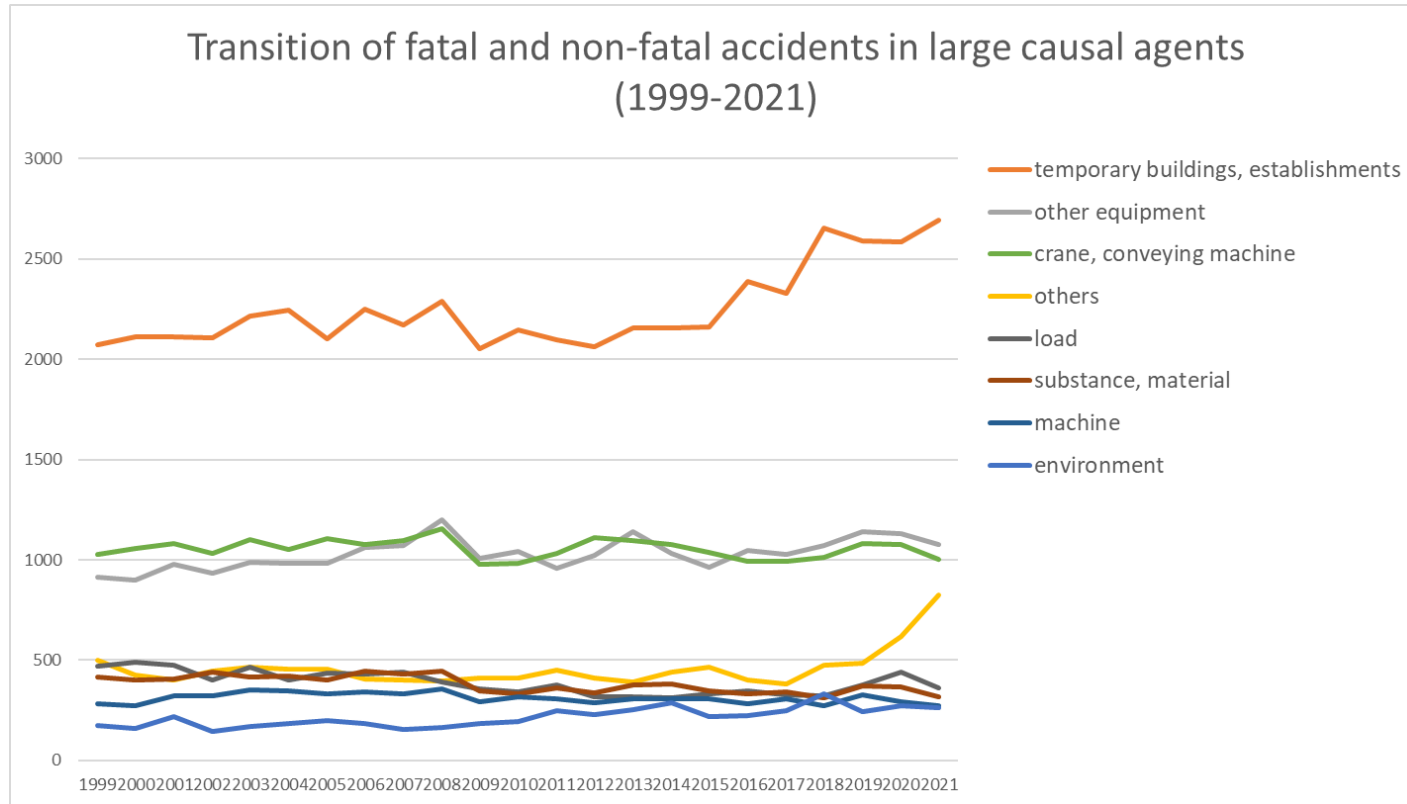
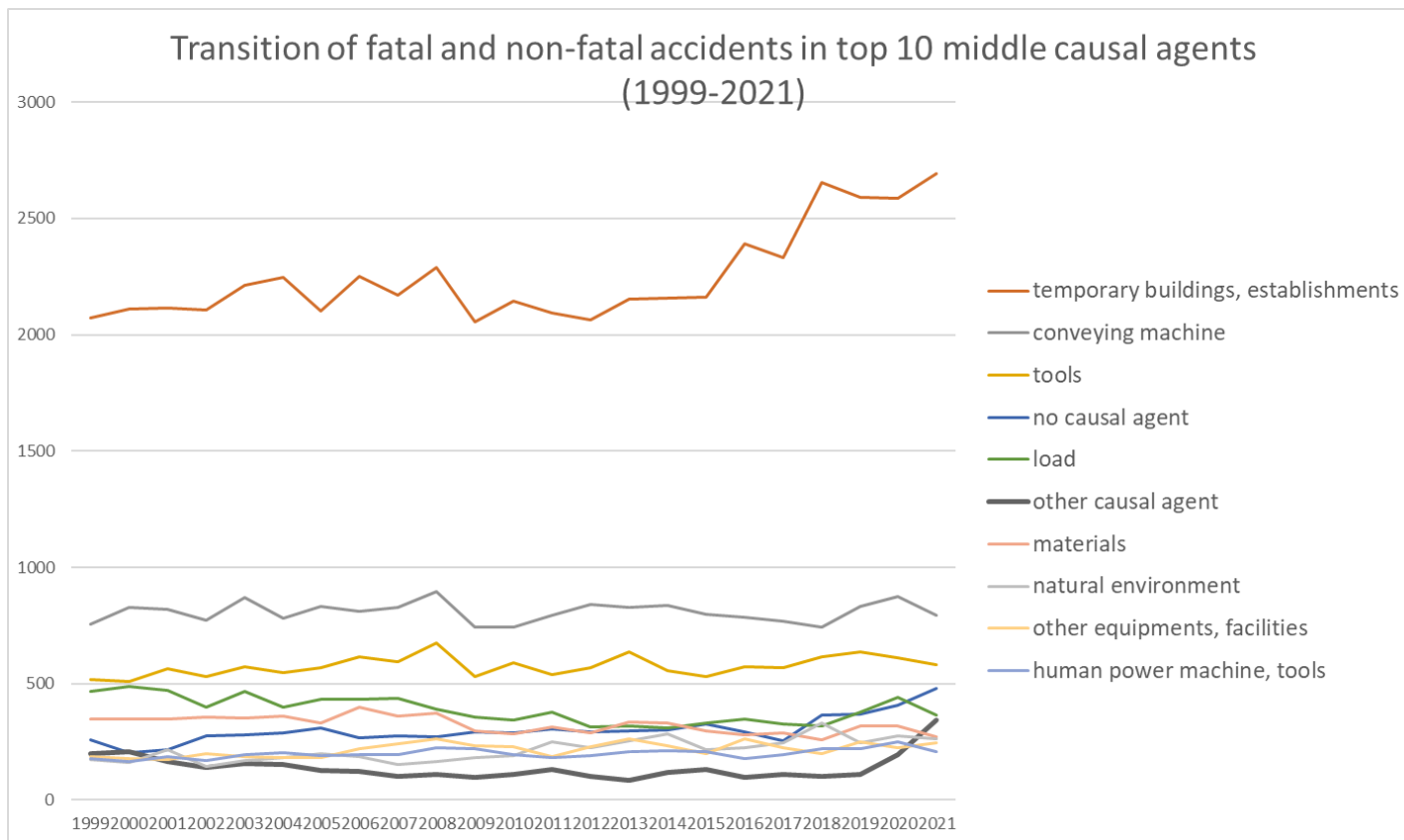


Transition of fatal and non-fatal accidents in each element like as causal agents, type of accidents, etc. in code no. 1501 commercial cleaning and livestock process (1999-2021)

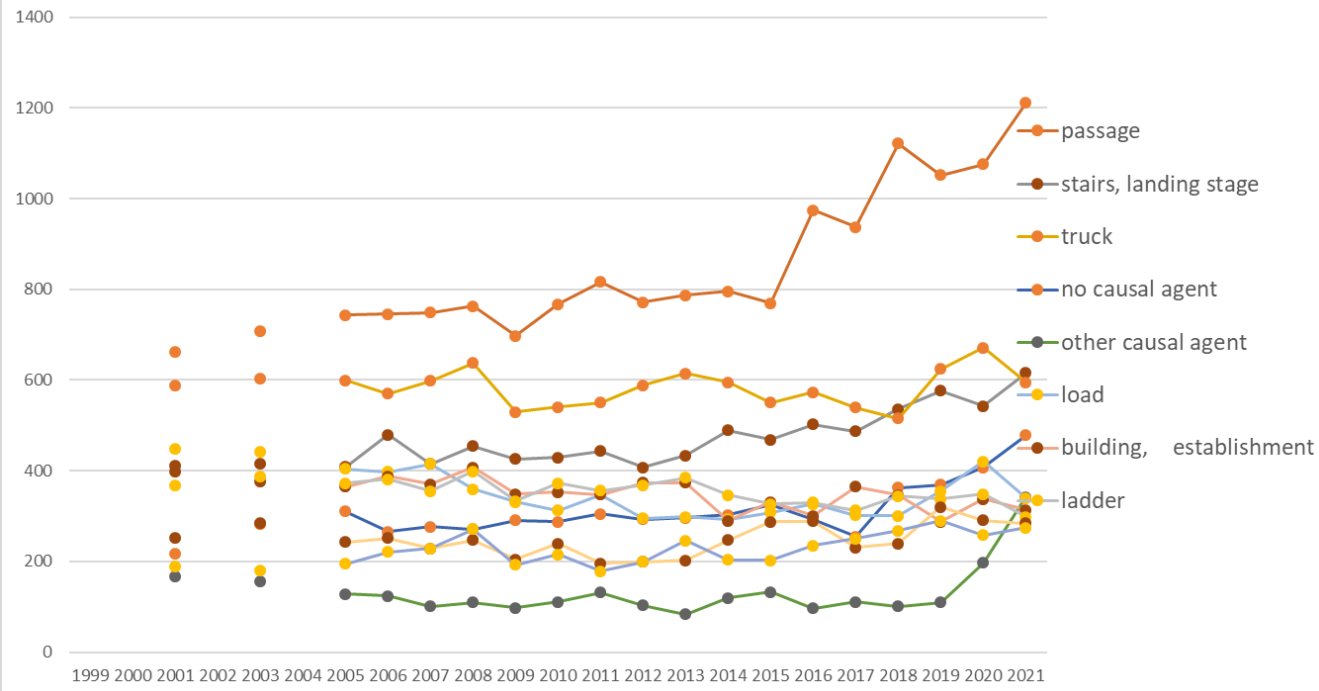


Transition of fatal and non-fatal accidents in large causal agents in code no. 1501 commercial cleaning and livestock process (1999-2021)



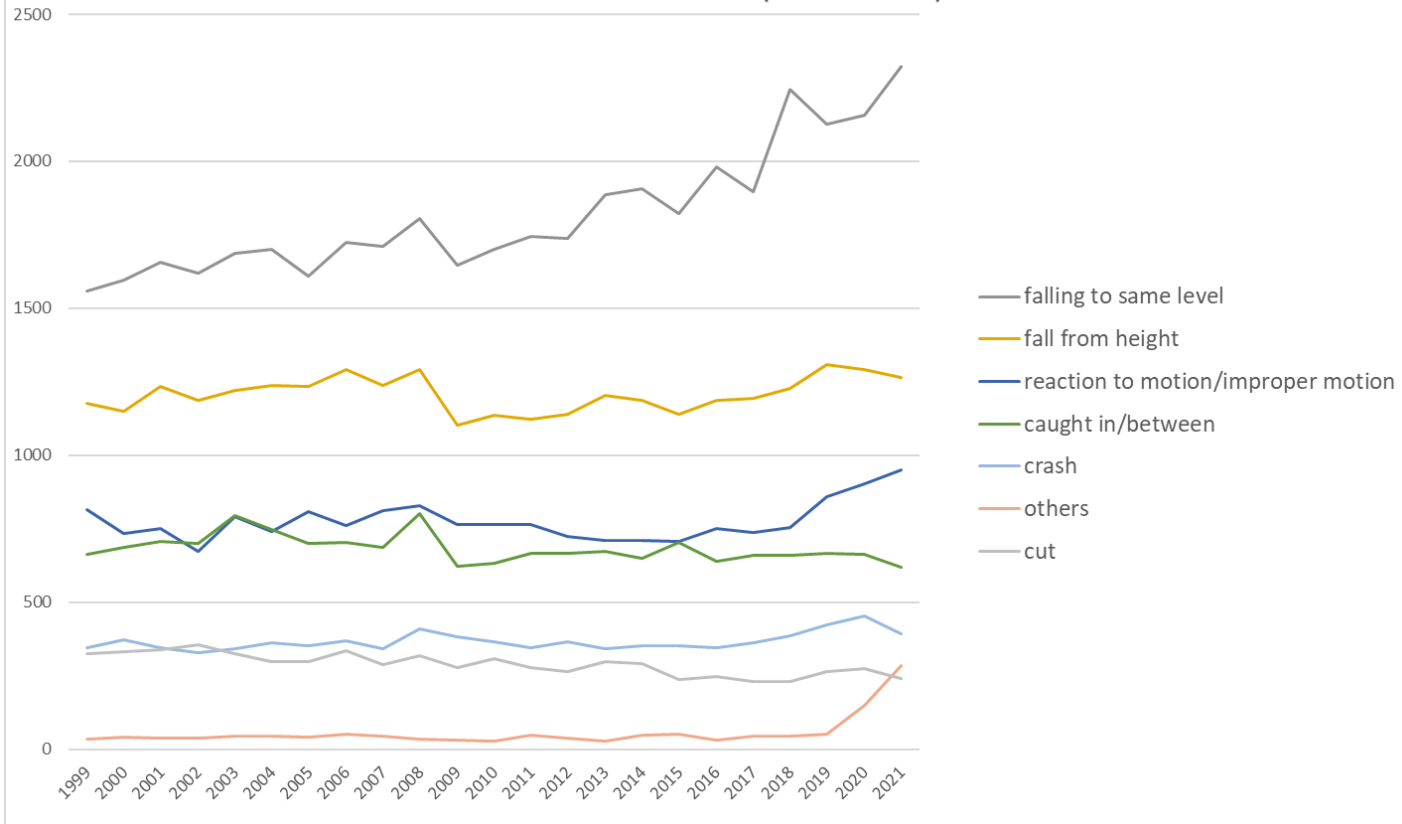
Transition of fatal and non-fatal accidents in middle causal agents in code no. 1501 commercial cleaning and livestock process (1999-2021)

### Transition of fatal and non-fatal accidents in top 10 small causal agents (1999-2021)



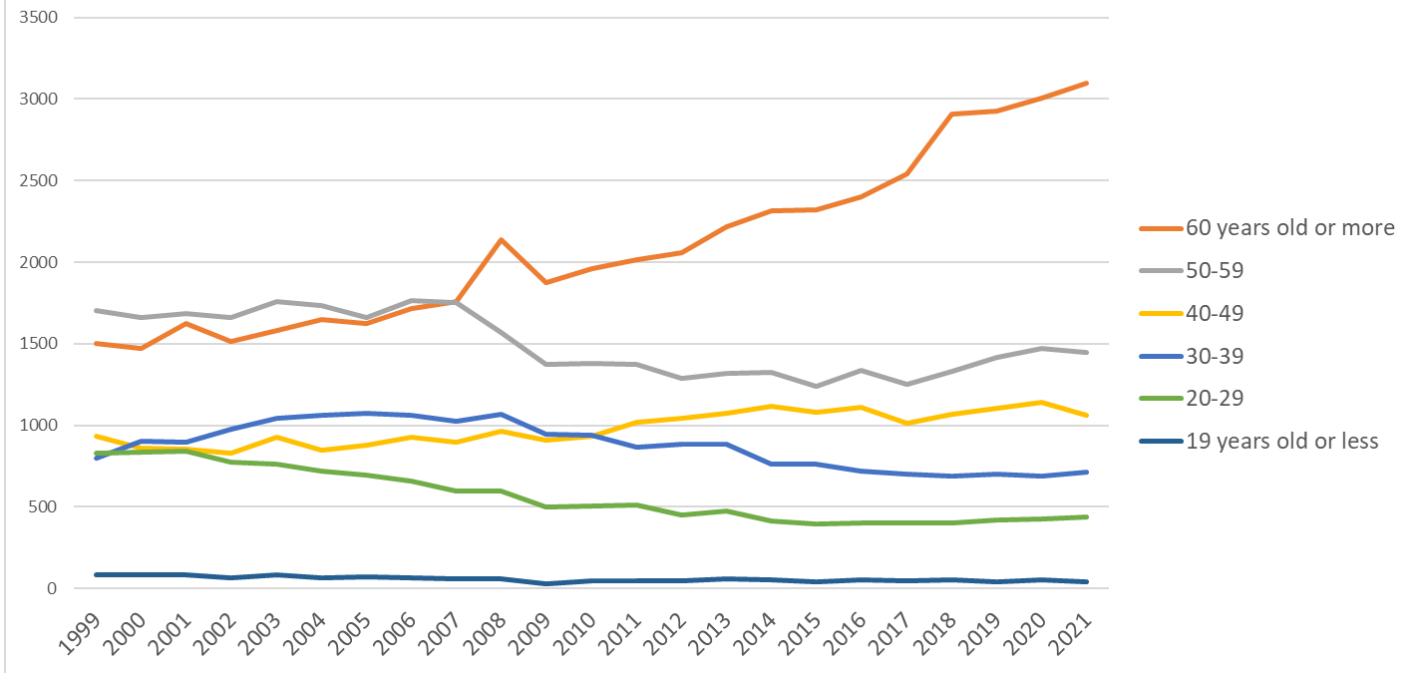
Transition of fatal and non-fatal accidents in small causal agents in code no. 1501 commercial cleaning and livestock process (1999-2021)

Transition of fatal and non-fatal accidents in top 7 type of accidents  
(1999-2021)



Transition of fatal and non-fatal accidents in type of accidents in code no. 1501 commercial cleaning and livestock process (1999-2021)

Transition of fatal and non-fatal accidents in workers ages (1999-2021)



Transition of fatal and non-fatal accidents in workers ages in code no. 1501 commercial cleaning and livestock process (1999-2021)





















139	machines			3		5		6	4	5	8	2	6	5	2	3	3	4	3	3	4	2	5	4	77	machines
219	other powered crane			4		1		6	3	4	1	8	2	2	3	2	2	6	8		8	5		3	68	other powered crane
352	electric power facilities			2		5		3	1	5	2	1	5	5	2	2	4	1	2	5	6	4	3	3	61	electric power facilities
349	other kiln, caldron					1			3	2	5				3		2	2		2		1	1	3	25	other kiln, caldron
363	human power machine			4		2					1	2	1	2		4	2	3	4	2		4	3	2	36	human power machine
163	roll machine (except printingroll machine)					3		3	1	1	2	1		3	3	1	1	3		1	4	3		2	32	roll machine (except printingroll machine)
511	explosive substance			2		2		3	2	1	1	1		1	1		1	1	2	1	2	1		2	24	explosive substance
332	arc welding equipment									1		1				2	1	1		1	2	1	1	2	13	arc welding equipment
132	band sawing machine												1	1	1	1								2	6	band sawing machine
156	shearing machine			3		2		3	3	3	2	1	4	3	6	2	4	5	4	5	2	4	2	1	59	shearing machine
714	abnormal environment			3					1		2		3	1	8	4	2	1	2	1	5	4	5	1	43	abnormal environment
146	vehicle for high lift work			1					1	1	1	3	1	2			2	3	1	2	3	1	1	1	24	vehicle for high lift work
321	chemical facilities			1				3	1	1	1	1	1	1	1		1	1		1		1	2	1	18	chemical facilities
164	injection molding machine										1	1	3	2		1				3	1	1	2	1	16	injection molding machine
339	other welding equipment			1					1	1		1		1								2	2	1	11	other welding equipment

342	industrial dryer			1		1		1	1	1								1		1	3		1	11	industrial dryer	
227	rough terrain hauler			1		1		1			1					1						2	1	8	rough terrain hauler	
319	other pressure vessels			7		1		2		3	4	3	1	5	2	5	1	1	1			1			37	other pressure vessels
311	boiler			4		2		1	2	1	2	3	2	1	3	4	2	1	1	2	1		1		33	boiler
111	engine			1		1		1	2	1	1	1	2	2	1	1	2	1	2	6		1	1		27	engine
312	pressure vessel					2		2	1	3		1	2	2	1	3		1	1			1	1		21	pressure vessel
161	centrifugal machine					2		1	1		3	1			1	1	1			1	1	1			14	centrifugal machine
152	drill press, milling machine					1		2			1			2	2							1	2		11	drill press, milling machine
133	wood planer machine			1				1	1		1	1	1								1		1		8	wood planer machine
143	foundation work machine								3	1	1					1	1								7	foundation work machine
166	printing machine			1						1		1		1				2							7	printing machine
144	hardening machine					1		2									2	1							6	hardening machine
223	railway equipment					2								1					1				1		5	railway equipment
412	timbering			2					2	1															5	timbering
167	industrial robot									1	1				1		1								4	industrial robot
151	lathe									1			1		1										3	lathe
155	forging pressure hammer								1									1					1		3	forging pressure hammer
171	felling machine																	1		1	1				3	felling machine
226	straddle carrier																	1					1		2	straddle carrier
134	hollow chisel mortiser, wood									1															1	hollow chisel mortiser, wood









6	more	637	623	672	630	622	626	615	606	625	692	644	697	638	676	742	788	640	692	778	942	847	855	864	16,151	more
	total	5,855	5,819	5,993	5,825	6,166	6,077	6,014	6,198	6,088	6,395	5,630	5,768	5,829	5,772	6,037	5,989	5,834	6,018	5,953	6,450	6,617	6,781	6,807	139,915	total

Transition of fatal and non-fatal accidents in months in code no. 1501 commercial cleaning and livestock process (1999-2021)

code	Month	1999	2000	2001	2002	2003	2004	2005	2006	2007	2008	2009	2010	2011	2012	2013	2014	2015	2016	2017	2018	2019	2020	2021	total	Month
8	August	549	524	554	515	522	540	549	563	564	524	515	548	537	567	548	465	480	549	531	537	604	611	663	12,559	August
1	January	500	438	522	458	516	506	429	561	475	556	499	442	491	472	590	536	517	601	524	665	556	535	648	12,037	January
3	March	488	473	504	482	565	517	494	551	507	533	507	484	533	493	486	447	494	482	515	515	505	504	590	11,669	March
10	October	514	473	494	526	499	511	493	531	483	509	459	441	422	493	491	511	510	489	536	564	582	580	584	11,695	October
7	July	527	547	552	567	588	530	540	539	569	535	493	562	503	510	553	534	550	524	510	649	652	639	561	12,734	July
12	December	395	465	489	458	482	511	541	452	487	498	463	449	498	458	471	510	427	451	502	481	502	612	553	11,155	December
9	September	471	530	486	468	505	482	539	500	526	540	461	469	461	409	467	490	480	490	438	511	554	634	546	11,457	September
4	April	510	456	475	489	510	511	468	453	516	521	453	474	469	461	502	475	477	471	476	527	497	511	546	11,248	April
2	February	445	474	481	444	445	492	488	513	455	579	451	487	480	514	498	611	467	464	464	520	564	549	536	11,421	February
11	November	426	441	452	456	464	486	431	501	452	502	414	440	457	437	480	483	476	475	491	475	514	514	529	10,796	November
5	May	452	480	512	464	527	470	515	528	536	539	421	467	463	450	443	465	452	520	480	488	496	480	526	11,174	May
6	June	578	518	472	498	543	521	527	506	518	559	494	505	515	508	508	462	504	502	486	518	591	612	525	11,970	June
	total	5,855	5,819	5,993	5,825	6,166	6,077	6,014	6,198	6,088	6,395	5,630	5,768	5,829	5,772	6,037	5,989	5,834	6,018	5,953	6,450	6,617	6,781	6,807	139,915	total

Transition of fatal and non-fatal accidents in prefectures in code no. 1501 commercial cleaning and livestock process (1999-2021)

code	Prefecture	1999	2000	2001	2002	2003	2004	2005	2006	2007	2008	2009	2010	2011	2012	2013	2014	2015	2016	2017	2018	2019	2020	2021	total	Prefecture
13	Tokyo	637	638	681		756		746	764	779	862	740	823	783	770	861	839	758	730	799	853	921	947	898	16,585	Tokyo
27	Osaka	750	725	689		691		644	597	548	569	569	526	538	470	467	499	416	487	429	489	463	430	520	11,516	Osaka
14	Kanagawa	444	469	464		424		445	478	440	464	394	417	383	352	416	457	416	411	388	456	461	473	468	9,120	Kanagawa
1	Hokkaido	304	298	332		328		340	306	346	342	294	319	347	308	374	359	390	352	329	366	423	457	400	7,314	Hokkaido

23	Aichi	308	357	320		326		319	308	346	391	347	345	341	333	312	311	317	336	341	384	347	383	372	7,144	Aichi
11	Saitama	212	222	279		234		240	243	257	292	274	232	236	248	301	286	266	297	270	298	340	372	363	5,762	Saitama
40	Fukuoka	295	275	304		314		290	343	323	292	282	274	289	285	295	273	289	302	327	328	332	339	353	6,404	Fukuoka
12	Chiba	239	270	235		285		218	269	248	308	255	282	247	238	256	259	239	237	233	304	326	293	323	5,564	Chiba
28	Hyogo	239	208	232		332		261	263	271	280	221	254	262	245	259	236	236	250	258	241	256	290	279	5,373	Hyogo
22	Shizuoka	155	154	155		174		159	190	200	216	142	164	159	164	168	172	177	185	156	186	194	202	181	3,653	Shizuoka
34	Hiroshima	147	158	154		128		157	157	155	135	119	117	130	141	126	128	125	147	132	135	148	148	162	2,949	Hiroshima
4	Miyagi	103	100	88		135		106	126	106	110	98	115	130	134	174	110	93	108	110	134	102	119	135	2,436	Miyagi
15	Niigata	107	82	101		106		100	118	85	116	97	107	111	117	132	116	103	125	120	133	114	107	127	2,324	Niigata
26	Kyoto	153	168	167		145		153	141	138	128	125	109	120	151	125	114	129	126	153	121	119	117	124	2,826	Kyoto
7	Fukushima	63	75	80		69		65	84	79	76	72	79	78	75	80	94	99	85	90	104	107	79	112	1,745	Fukushima
8	Ibaraki	83	72	90		65		84	91	86	89	82	78	92	73	81	88	96	96	93	108	120	115	108	1,890	Ibaraki
20	Nagano	70	70	100		79		73	79	88	84	78	67	80	87	95	79	83	80	85	103	94	88	100	1,762	Nagano
10	Gunma	85	86	105		96		86	93	90	83	74	103	91	111	92	96	110	100	95	98	91	99	96	1,980	Gunma
24	Mie	82	65	68		68		62	67	92	92	83	69	72	59	72	63	67	83	69	67	77	71	89	1,537	Mie
9	Tochigi	69	63	67		76		81	68	80	68	54	71	69	70	80	84	78	86	90	84	79	87	86	1,590	Tochigi
46	Kagoshima	41	47	47		72		67	65	57	63	62	49	49	46	40	52	72	67	70	74	78	76	83	1,277	Kagoshima
2	Aomori	64	65	56		63		60	38	54	53	43	56	54	55	57	60	57	49	53	53	61	62	82	1,195	Aomori
43	Kumamoto	89	80	77		70		69	93	73	93	80	73	85	74	74	87	73	105	96	92	102	117	80	1,782	Kumamoto
29	Nara	64	37	53		46		44	52	47	45	48	48	49	52	58	66	51	65	42	51	42	77	80	1,117	Nara
33	Okayama	52	46	52		72		64	77	47	70	51	68	65	68	63	64	73	78	77	76	73	84	76	1,396	Okayama
21	Gifu	63	58	59		57		58	63	74	65	64	49	56	62	51	46	52	49	67	58	67	60	75	1,253	Gifu
3	Iwate	48	54	50		59		55	57	52	59	45	44	63	58	55	66	64	51	57	58	66	75	75	1,211	Iwate
42	Nagasaki	64	46	60		68		84	71	81	68	55	52	51	59	68	58	72	61	63	68	59	84	71	1,363	Nagasaki
47	Okinawa	33	29	44		44		43	51	53	71	49	56	57	65	51	74	66	81	70	90	92	83	69	1,271	Okinawa

38	Ehime	46	73	54		52		58	51	50	42	47	50	34	55	47	45	51	54	47	55	70	54	67	1,102	Ehime
45	Miyazaki	58	64	55		64		62	56	43	56	58	49	57	52	38	44	44	39	50	50	71	62	63	1,135	Miyazaki
44	Oita	50	63	53		62		71	67	87	65	67	53	69	51	55	58	71	55	68	61	75	71	59	1,331	Oita
37	Kagawa	38	48	33		48		53	40	49	41	56	43	38	43	45	38	38	50	40	52	56	48	57	954	Kagawa
25	Shiga	46	50	56		40		42	63	53	57	57	48	37	67	46	56	57	51	53	59	60	50	55	1,103	Shiga
17	Ishikawa	54	47	47		37		47	55	48	46	49	53	45	53	54	52	47	61	52	69	62	48	55	1,081	Ishikawa
16	Toyama	59	52	43		55		56	51	44	58	45	35	52	54	50	64	46	51	48	50	52	52	50	1,067	Toyama
35	Yamaguchi	61	51	57		52		67	73	46	49	56	52	51	61	45	42	59	58	67	49	50	66	48	1,160	Yamaguchi
36	Tokushima	43	43	51		51		47	51	37	53	33	31	34	48	41	44	42	32	41	39	46	42	47	896	Tokushima
6	Yamagata	70	46	53		45		43	60	46	38	43	44	47	51	55	39	37	43	47	51	43	47	46	994	Yamagata
39	Kochi	58	45	47		38		34	35	49	37	35	41	44	34	29	46	32	26	35	45	33	46	45	834	Kochi
41	Saga	44	38	42		36		46	42	37	39	27	34	27	35	46	34	32	57	37	51	51	45	44	844	Saga
30	Wakayama	27	21	29		39		57	57	47	42	42	49	39	42	44	34	42	41	48	41	46	36	42	865	Wakayama
18	Fukui	37	38	34		29		31	30	31	43	28	29	37	37	31	45	39	26	33	38	32	49	42	739	Fukui
5	Akita	40	43	35		41		41	41	44	41	26	36	45	50	46	35	38	45	52	46	37	51	32	865	Akita
19	Yamanashi	21	26	32		39		24	23	28	45	21	33	30	29	24	31	36	48	29	33	31	28	31	642	Yamanashi
31	Tottori	20	20	32		19		29	24	32	26	16	15	27	20	19	23	30	28	24	20	25	27	19	495	Tottori
32	Shimane	20	34	31		37		33	27	22	33	27	27	29	20	39	23	26	24	20	29	23	25	18	567	Shimane
	total	5,855	5,819	5,993		6,166		6,014	6,198	6,088	6,395	5,630	5,768	5,829	5,772	6,037	5,989	5,834	6,018	5,953	6,450	6,617	6,781	6,807	128,013	total

Data source : <https://anzeninfo.mhlw.go.jp/user/anzen/tok/anst00.htm>

Return to [https://www.jisha.or.jp/english/statistics/202211\\_23.html](https://www.jisha.or.jp/english/statistics/202211_23.html)