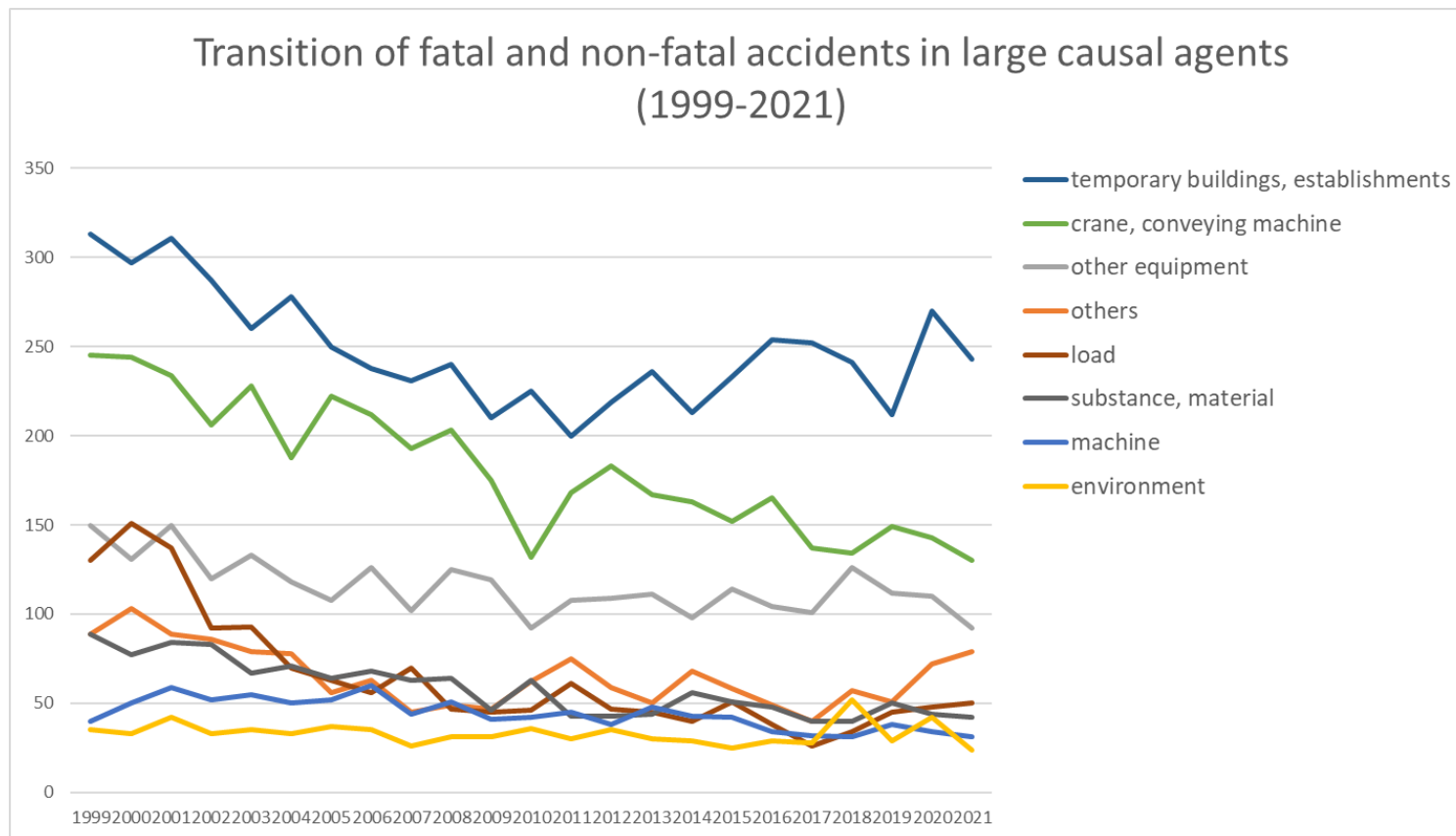
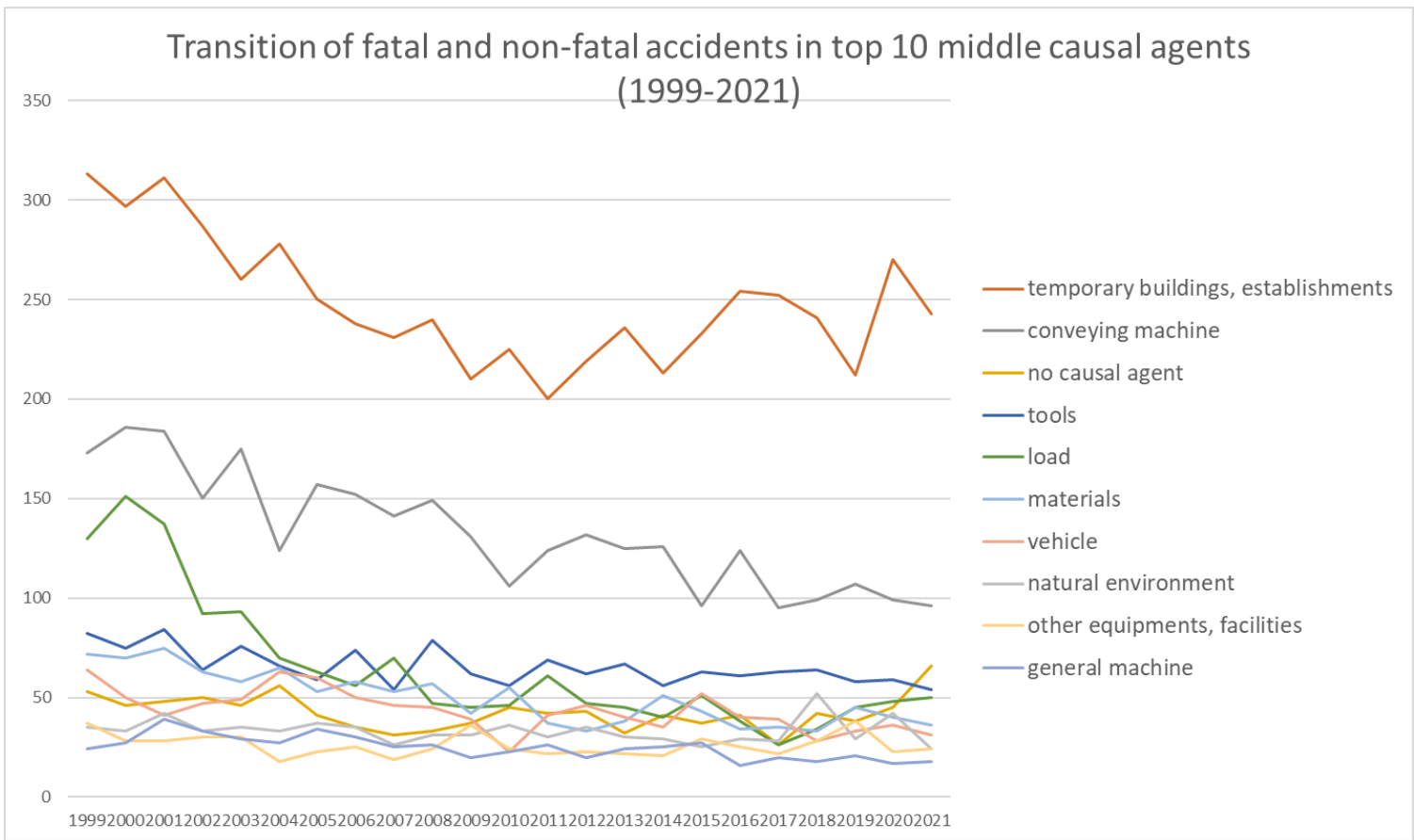


Transition of fatal and non-fatal accidents in each element like as causal agents, type of accidents, etc. in code no. 150109 other cleaning and livestock process service (1999-2021)

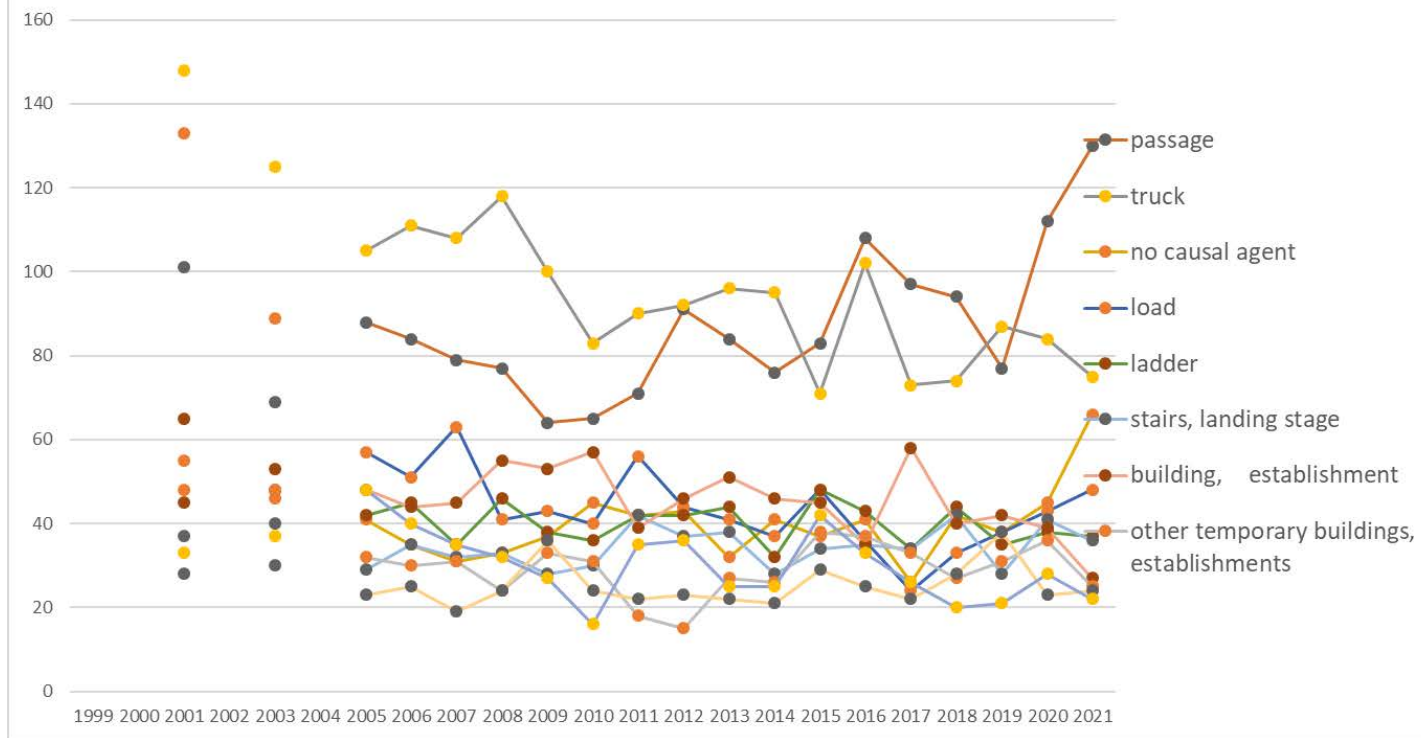


Transition of fatal and non-fatal accidents in large causal agents in code no. 150109 other cleaning and livestock process service (1999-2021)



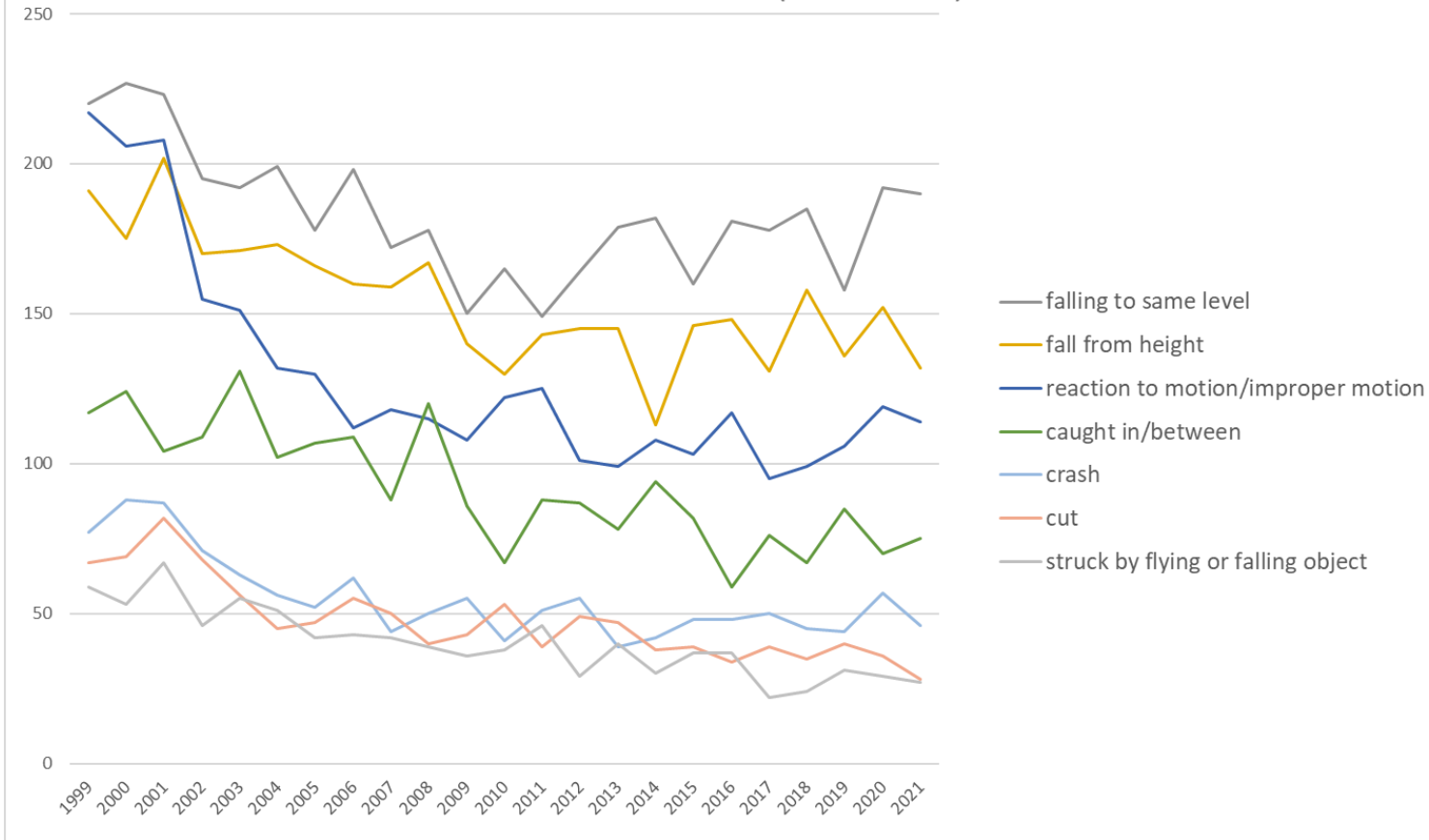
Transition of fatal and non-fatal accidents in middle causal agents in code no. 150109 other cleaning and livestock process service (1999-2021)

Transition of fatal and non-fatal accidents in top 10 small causal agents (1999-2021)



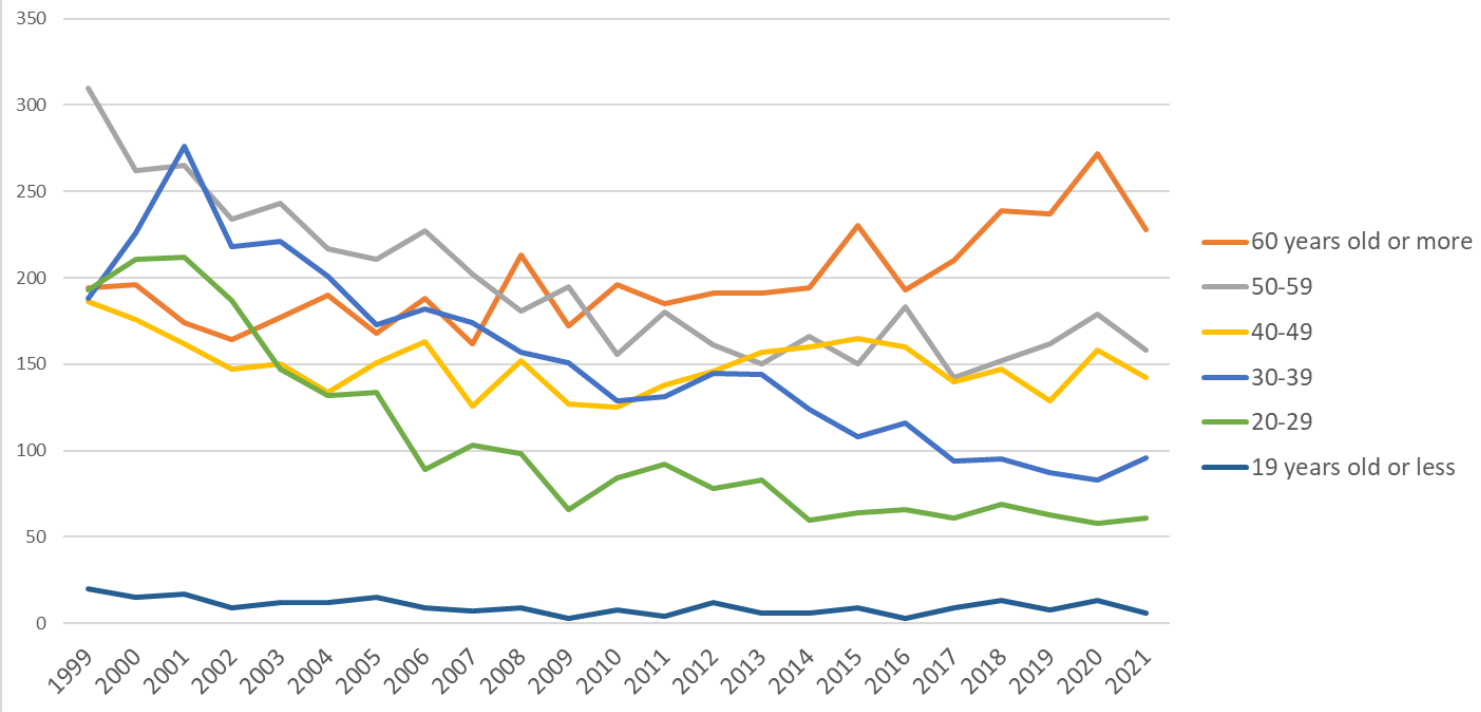
Transition of fatal and non-fatal accidents in small causal agents in code no. 150109 other cleaning and livestock process service (1999-2021)

Transition of fatal and non-fatal accidents in top 7 type of accidents
(1999-2021)



Transition of fatal and non-fatal accidents in type of accidents in code no. 150109 other cleaning and livestock process service (1999-2021)

Transition of fatal and non-fatal accidents in workers ages (1999-2021)



Transition of fatal and non-fatal accidents in workers ages in code no. 150109 other cleaning and livestock process service (1999-2021)

10	Gunma	18	20	16		22		20	11	12	22	16	20	13	16	16	21	23	20	16	17	15	16	18	368	Gunma
24	Mie	17	5	17		18		13	14	15	15	23	7	15	8	11	5	14	20	14	14	11	11	18	285	Mie
34	Hiroshima	27	37	28		20		30	30	19	27	19	11	13	24	21	22	18	18	11	12	18	20	16	441	Hiroshima
7	Fukushima	10	12	11		8		9	21	8	11	8	11	11	7	8	9	12	12	13	11	9	15	15	231	Fukushima
4	Miyagi	9	13	10		8		4	14	14	13	8	11	13	24	23	6	2	9	6	6	6	9	14	222	Miyagi
3	Iwate	4	1	10		12		8	4	12	7	7	8	10	8	8	3	7	5	8	7	7	9	13	158	Iwate
43	Kumamoto	12	15	12		21		10	19	9	17	18	15	15	11	14	14	8	22	16	24	12	20	12	316	Kumamoto
9	Tochigi	7	8	9		10		9	10	11	10	7	10	8	11	13	13	9	17	14	11	7	15	12	221	Tochigi
46	Kagoshima	11	6	9		9		17	14	9	2	11	7	10	9	8	6	9	7	8	9	7	9	12	189	Kagoshima
38	Ehime	5	10	12		11		6	4	7	7	10	8	3	7	8	9	8	7	7	11	14	5	12	171	Ehime
15	Niigata	18	7	20		24		25	19	15	16	12	12	8	14	21	16	12	16	17	21	17	15	11	336	Niigata
45	Miyazaki	15	10	24		15		18	11	4	10	15	6	7	6	4	6	9	5	4	7	12	3	11	202	Miyazaki
21	Gifu	20	12	6		16		8	11	6	10	3	9	9	7	9	3	9	7	6	8	7	15	11	192	Gifu
26	Kyoto	39	26	64		30		25	37	21	18	16	13	19	22	5	13	21	23	27	22	18	15	10	484	Kyoto
33	Okayama	16	5	10		12		13	19	6	15	5	20	15	17	5	9	11	16	7	9	8	15	10	243	Okayama
35	Yamaguchi	12	11	6		8		6	17	9	8	9	6	11	6	7	4	13	5	9	11	8	10	10	186	Yamaguchi
37	Kagawa	11	8	10		7		8	6	15	8	9	8	4	5	5	3	5	8	5	1	6	4	8	144	Kagawa
42	Nagasaki	10	9	8		7		12	12	15	7	9	9	6	16	9	7	6	10	6	4	8	12	7	189	Nagasaki
2	Aomori	6	6	2				9	8	4	10	2	7	5	4	5	5	10	6	9	8	1	4	6	117	Aomori
20	Nagano	7	9	7		7		3	4	7	8	7	9	8	6	7	13	12	8	12	12	10	4	5	165	Nagano
17	Ishikawa	6	1	1		3		4	8	4	2	1	5	2	1	3	1	4	3	2	5	6	2	5	69	Ishikawa
6	Yamagata	10	5	7		6		6	9	3	2	5	2	5	7	5	2	7	13	5	4		5	4	112	Yamagata
39	Kochi	22	14	10		7		4		1	3	2	2	5	5	4	4	2	3	7	2	5	4	4	110	Kochi
44	Oita	6	10	7		8		5	8	5		3	4	5	3	1	4	3	2	4	2	5	5	4	94	Oita

29	Nara	11	3	1		4		2	5	4	4	2	3	3	2	6	7	2	2	4	2	3	2	4	76	Nara
30	Wakayama	8	4	5		8		8	11	6	6	6	10	7	7	5	11	4	7	5	3	7	11	3	142	Wakayama
25	Shiga	8	6	7		5		5	15	3	6	9	4	4	2	10	3	11	2	1	3	2	2	3	111	Shiga
41	Saga	6	9	5		6		5	3	3	4	4	4	2	6	2	3	5	9	6	6	8	3	3	102	Saga
16	Toyama	8	8	2		8		10	4	3	2	3	1	3	1	6	2	2	3		5	5	5	3	84	Toyama
36	Tokushima	26	18	16		29		18	16	19	22	12	13	15	16	18	13	20	11	9		1	7	1	300	Tokushima
5	Akita	7	5	5		8		6	10	5	9	2	4	2	4	6	6	3	4	2	1	2	2	1	94	Akita
47	Okinawa	3	4	8					3	1	3	1	5	3	3	1	4	2	6	1	4	3	8	1	64	Okinawa
32	Shimane	4	2	4		7		1	3	3	2	1	4	6	5	2	1	4	4	2	1	4	2	1	63	Shimane
18	Fukui	9	6	2		5		7	4	6	3	3	2	5	3	4	5	3	6	1		2			76	Fukui
19	Yamanashi	2	2	4		2		2	3	5	2	2	2	8	6	2	1		4		1	2	7		57	Yamanashi
31	Tottori	6	6	5		3		4	3	2	2		2	1	1			3	2	2	3				45	Tottori
	total	1,091	1,086	1,106		950		852	858	774	810	714	698	730	733	731	710	726	721	656	715	686	763	691	16,801	total

Data source : <https://anzeninfo.mhlw.go.jp/user/anzen/tok/anst00.htm>

Return to https://www.jisha.or.jp/english/statistics/202211_23.html