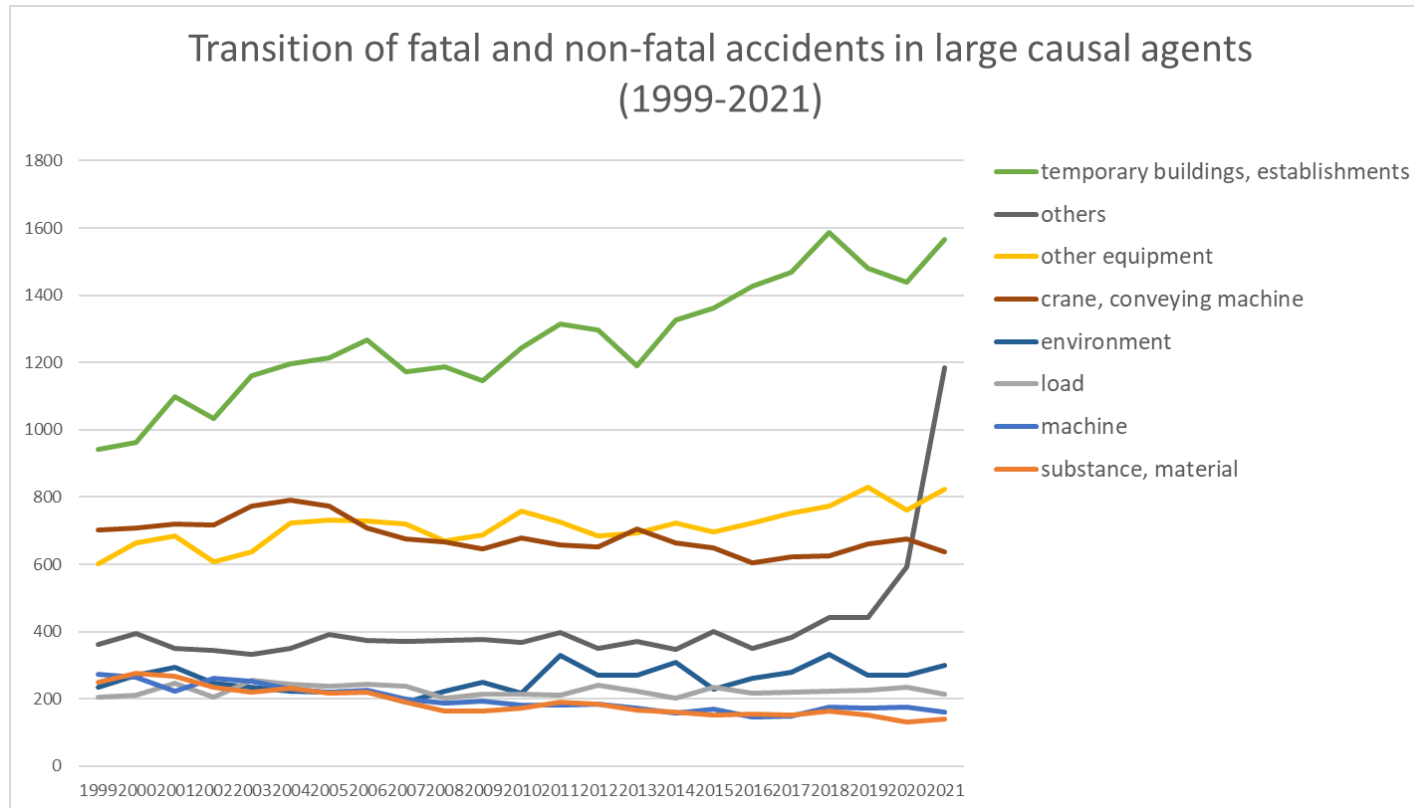
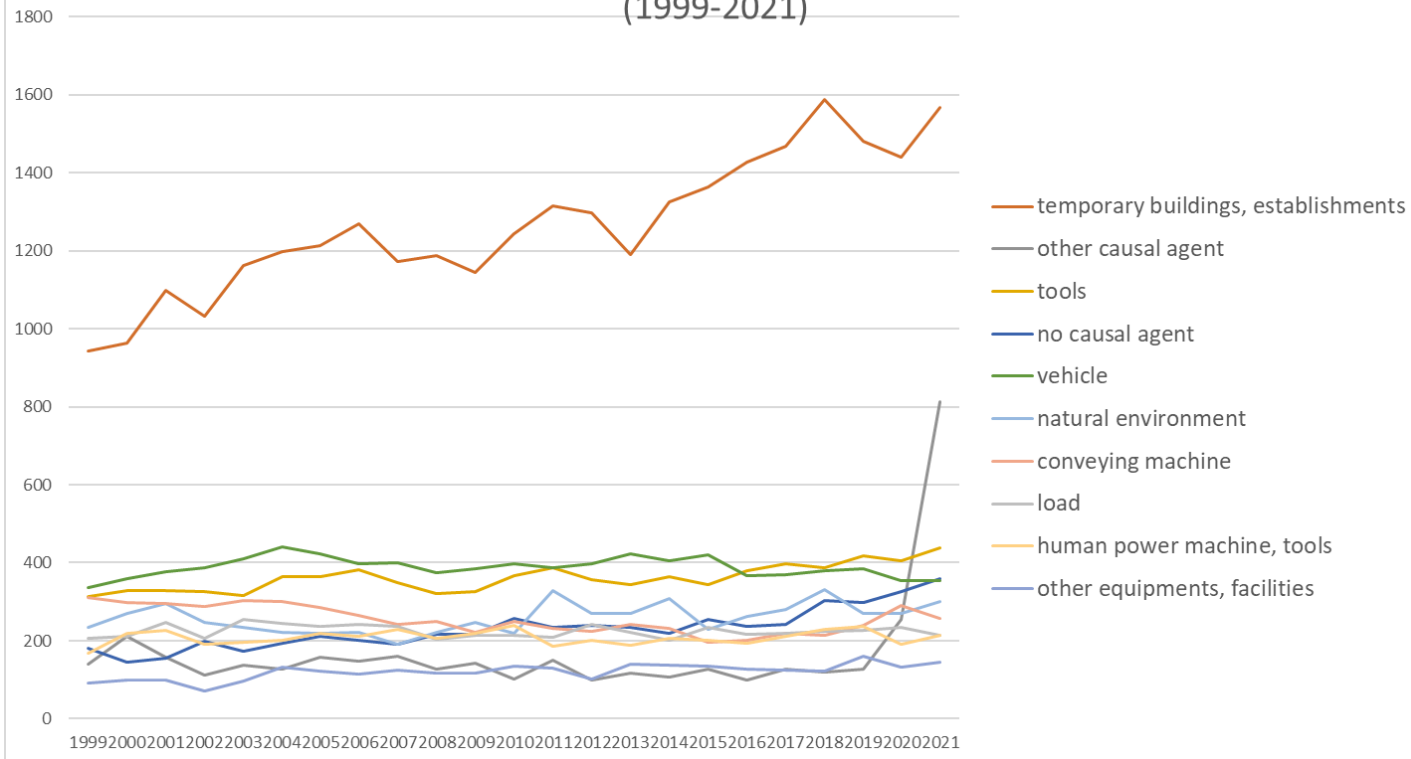


Transition of fatal and non-fatal accidents in each element like as causal agents, type of accidents, etc. in code no. 170209 others (1999-2021)



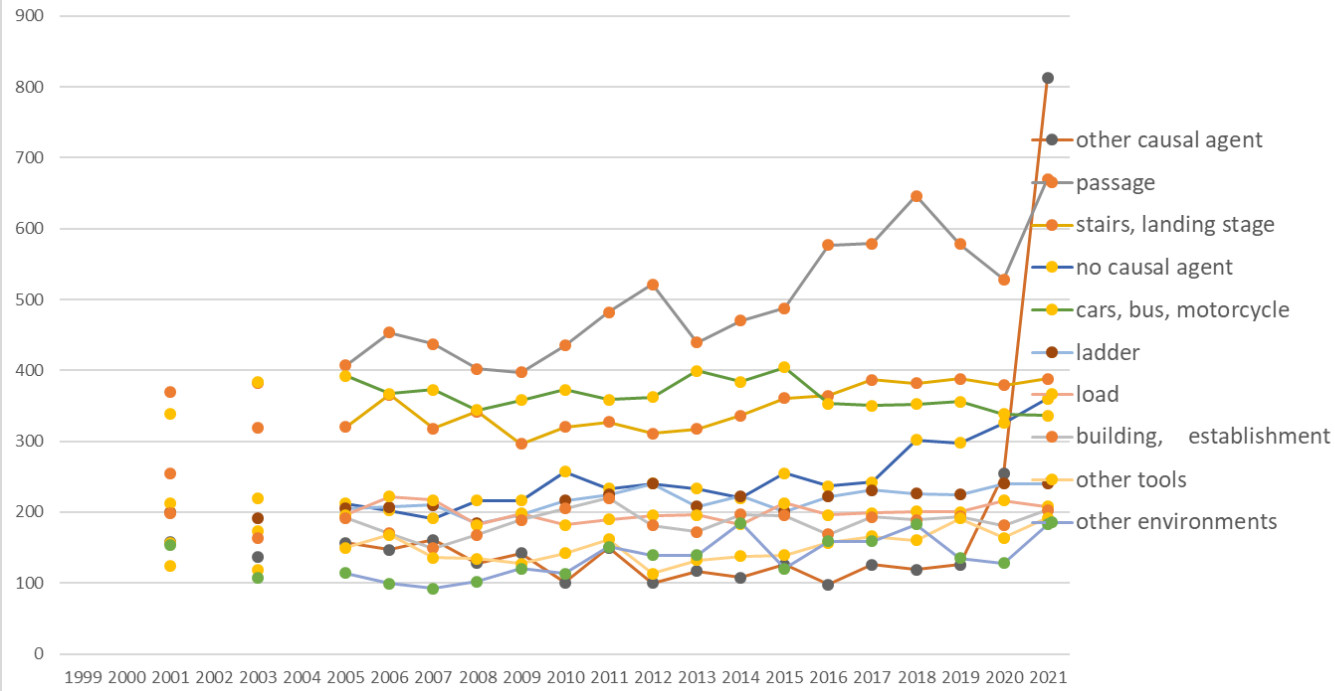
Transition of fatal and non-fatal accidents in large causal agents in code no. 170209 others (1999-2021)

Transition of fatal and non-fatal accidents in top 10 middle causal agents
(1999-2021)



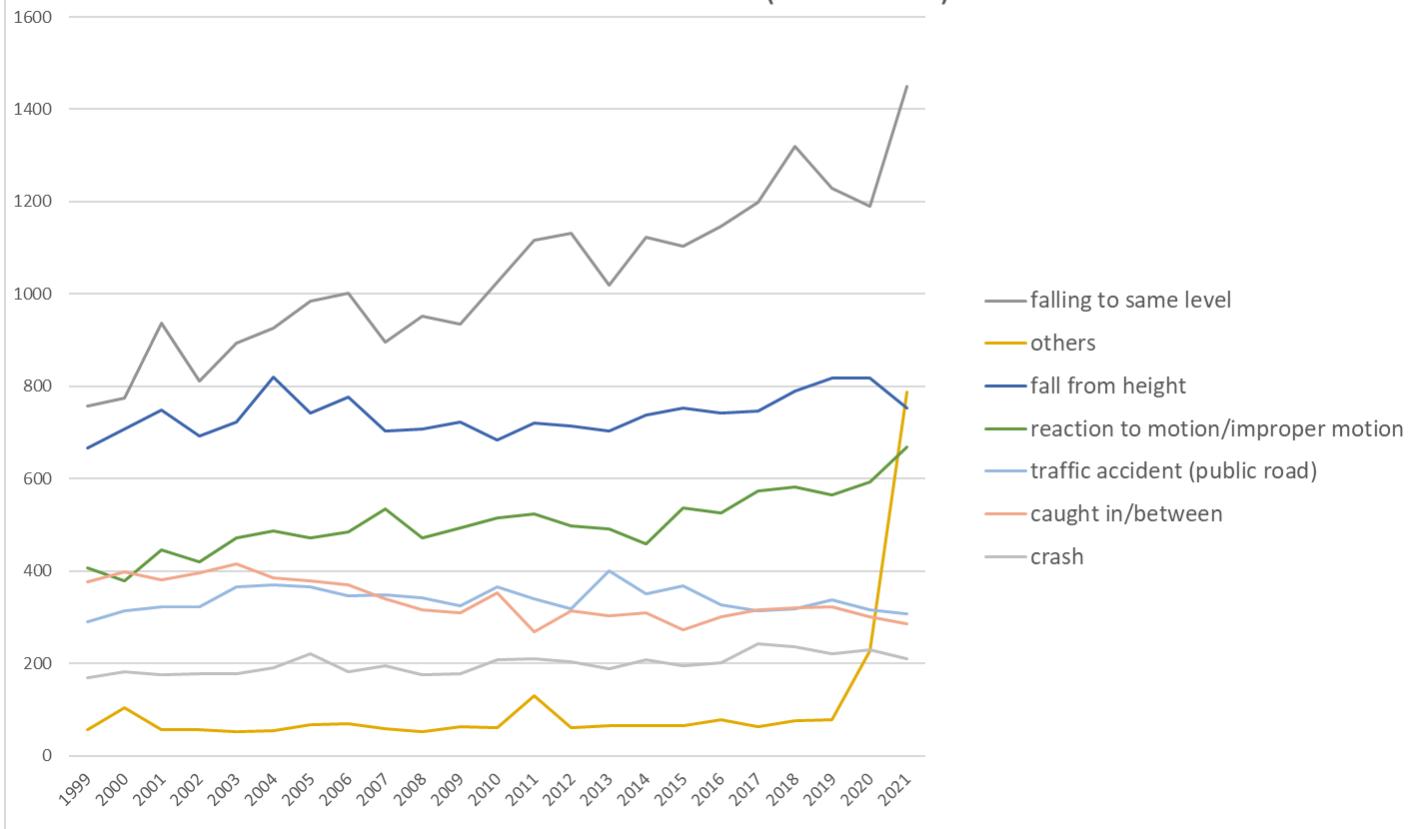
Transition of fatal and non-fatal accidents in middle causal agents in code no. 170209 others (1999-2021)

Transition of fatal and non-fatal accidents in top 10 small causal agents (1999-2021)



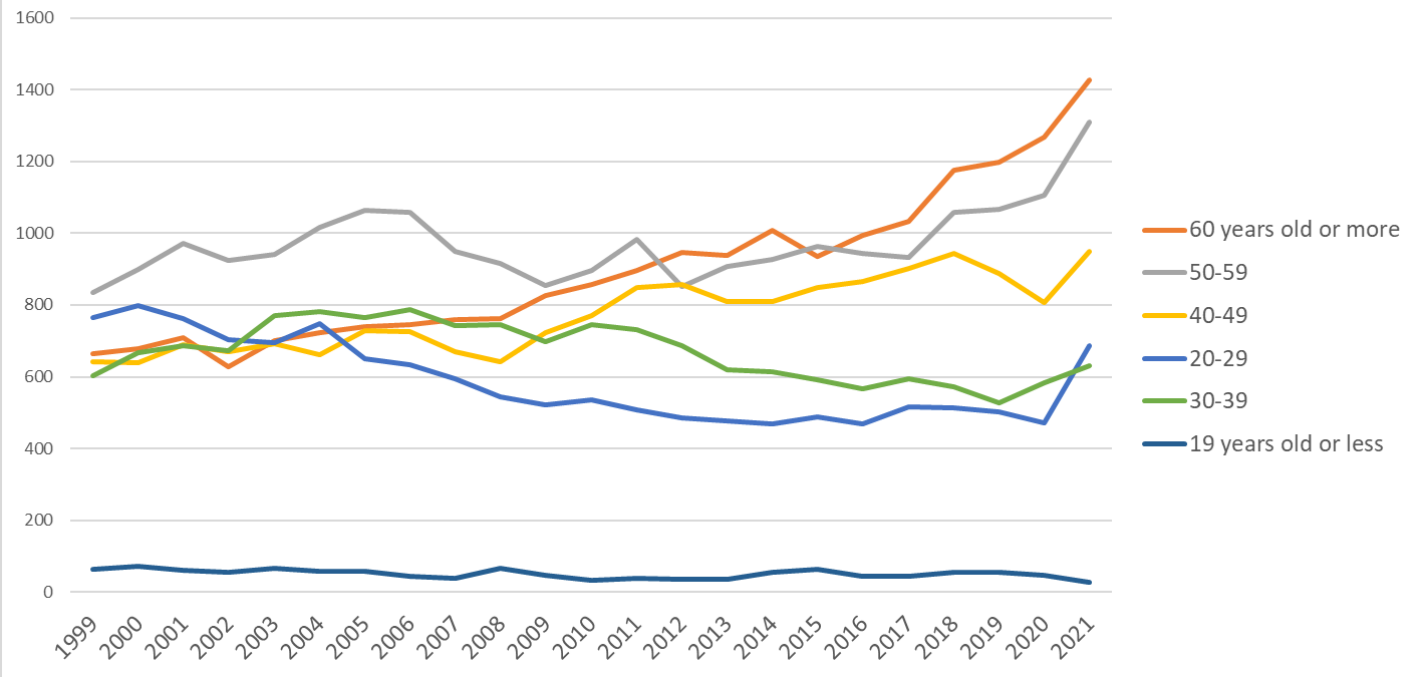
Transition of fatal and non-fatal accidents in small causal agents in code no. 170209 others (1999-2021)

Transition of fatal and non-fatal accidents in top 7 type of accidents
(1999-2021)



Transition of fatal and non-fatal accidents in type of accidents in code no. 170209 others (1999-2021)

Transition of fatal and non-fatal accidents in workers ages (1999-2021)



Transition of fatal and non-fatal accidents in workers ages in code no. 170209 others (1999-2021)

| | | | | | | | | | | | | | | | | | | | | | | | | | | |
|----|------------------------------------|-----|-----|-----|-----|-----|-----|-----|-----|-----|-----|-----|-----|-----|-----|-----|-----|-----|-----|-----|-----|-----|-----|-----|--------|------------------------------------|
| 90 | others | 57 | 104 | 56 | 56 | 52 | 55 | 68 | 70 | 59 | 52 | 63 | 61 | 130 | 62 | 66 | 65 | 65 | 79 | 64 | 77 | 79 | 228 | 787 | 2,455 | others |
| 01 | fall from height | 666 | 707 | 748 | 693 | 722 | 820 | 743 | 778 | 703 | 708 | 722 | 684 | 721 | 714 | 703 | 737 | 754 | 743 | 746 | 789 | 819 | 819 | 753 | 16,992 | fall from height |
| 19 | reaction to motion/improper motion | 406 | 378 | 446 | 420 | 471 | 488 | 473 | 484 | 534 | 472 | 494 | 515 | 524 | 497 | 492 | 458 | 537 | 525 | 574 | 582 | 566 | 594 | 668 | 11,598 | reaction to motion/improper motion |
| 17 | traffic accident (public road) | 290 | 315 | 322 | 322 | 367 | 371 | 365 | 346 | 349 | 342 | 324 | 365 | 339 | 319 | 400 | 351 | 368 | 327 | 315 | 318 | 337 | 316 | 308 | 7,776 | traffic accident (public road) |
| 07 | caught in/between | 377 | 398 | 382 | 397 | 416 | 385 | 378 | 371 | 339 | 317 | 310 | 353 | 268 | 313 | 304 | 309 | 273 | 300 | 316 | 321 | 322 | 302 | 286 | 7,737 | caught in/between |
| 03 | crash | 169 | 183 | 176 | 178 | 178 | 190 | 221 | 182 | 194 | 175 | 178 | 208 | 210 | 203 | 188 | 207 | 194 | 201 | 243 | 236 | 222 | 230 | 210 | 4,576 | crash |
| 08 | cut | 257 | 290 | 249 | 250 | 229 | 223 | 225 | 214 | 218 | 213 | 193 | 198 | 166 | 169 | 137 | 156 | 167 | 141 | 138 | 165 | 158 | 134 | 157 | 4,447 | cut |
| 06 | crashed by | 152 | 153 | 140 | 134 | 134 | 134 | 137 | 150 | 149 | 101 | 113 | 126 | 143 | 132 | 121 | 157 | 140 | 109 | 123 | 149 | 178 | 144 | 142 | 3,161 | crashed by |
| 04 | struck by flying or falling object | 245 | 246 | 206 | 212 | 214 | 195 | 223 | 191 | 156 | 170 | 158 | 175 | 186 | 163 | 175 | 158 | 136 | 158 | 149 | 148 | 155 | 152 | 129 | 4,100 | struck by flying or falling object |
| 05 | collapse | 50 | 64 | 66 | 54 | 66 | 68 | 52 | 68 | 57 | 64 | 65 | 37 | 60 | 66 | 61 | 68 | 48 | 60 | 53 | 67 | 50 | 48 | 51 | 1,343 | collapse |
| 11 | contact to high/low-temperature | 67 | 60 | 76 | 56 | 58 | 66 | 76 | 60 | 58 | 53 | 44 | 52 | 61 | 42 | 49 | 54 | 55 | 46 | 50 | 82 | 66 | 76 | 48 | 1,355 | contact to high/low-temperature |
| 12 | contact to harmful substance | 11 | 21 | 16 | 16 | 13 | 10 | 13 | 23 | 7 | 7 | 10 | 12 | 15 | 11 | 14 | 8 | 12 | 10 | 18 | 16 | 16 | 20 | 16 | 315 | contact to harmful substance |
| 09 | injury to the sole of the foot | 13 | 11 | 11 | 9 | 13 | 7 | 8 | 10 | 3 | 6 | 11 | 5 | 6 | 3 | 8 | 11 | 10 | 9 | 5 | 10 | 5 | 7 | 8 | 189 | injury to the sole of the foot |
| 99 | unclassifiable | 23 | 25 | 24 | 29 | 12 | 24 | 13 | 16 | 17 | 17 | 21 | 5 | 7 | 13 | 23 | 13 | 14 | 12 | 16 | 12 | 17 | 8 | 7 | 368 | unclassifiable |
| 13 | electric shock | 14 | 8 | 12 | 5 | 10 | 12 | 8 | 7 | 6 | 11 | 6 | 7 | 3 | 6 | 9 | 3 | 3 | 3 | 5 | 14 | 6 | 6 | 3 | 167 | electric shock |
| 18 | traffic accident | 10 | 2 | 3 | 2 | 7 | 4 | 9 | 6 | 6 | 4 | 5 | 1 | 6 | 7 | 4 | 2 | 4 | 4 | 1 | 2 | 5 | 5 | 3 | 102 | traffic accident |

| | (others) | | | | | | | | | | | | | | | | | | | | | | | | | | (others) |
|----|-----------|-------|-------|-------|-------|-------|-------|-------|-------|-------|-------|-------|-------|-------|-------|-------|-------|-------|-------|-------|-------|-------|-------|-------|--------|-----------|----------|
| 14 | explosion | | 1 | 5 | 2 | 3 | 4 | 3 | 3 | 2 | 1 | 2 | 1 | 4 | 6 | 7 | | 4 | 3 | 2 | 4 | 2 | | 2 | 61 | explosion | |
| 10 | drown | 2 | 10 | 2 | 3 | 2 | 4 | 2 | 5 | | 2 | 10 | 2 | 31 | 3 | 6 | 5 | 1 | 5 | 2 | 4 | 2 | 1 | 1 | 105 | drown | |
| 16 | fire | 4 | 1 | 3 | 1 | 1 | | 2 | 2 | | 1 | 3 | | 5 | 2 | | 1 | 2 | | | 1 | 1 | 1 | 1 | 32 | fire | |
| 15 | burst | 1 | | 1 | | 3 | 1 | 1 | 3 | 2 | 5 | 2 | 1 | 3 | | 3 | | 2 | 1 | 2 | 2 | | 3 | | 36 | burst | |
| | total | 3,572 | 3,752 | 3,881 | 3,651 | 3,864 | 3,988 | 4,005 | 3,991 | 3,755 | 3,674 | 3,669 | 3,834 | 4,004 | 3,863 | 3,790 | 3,886 | 3,892 | 3,882 | 4,021 | 4,318 | 4,235 | 4,283 | 5,029 | 90,839 | total | |

Transition of fatal and non-fatal accidents in workers ages in code no. 170209 others (1999-2021)

| code | Age | 1999 | 2000 | 2001 | 2002 | 2003 | 2004 | 2005 | 2006 | 2007 | 2008 | 2009 | 2010 | 2011 | 2012 | 2013 | 2014 | 2015 | 2016 | 2017 | 2018 | 2019 | 2020 | 2021 | total | Age |
|------|----------------------|-------|-------|-------|-------|-------|-------|-------|-------|-------|-------|-------|-------|-------|-------|-------|-------|-------|-------|-------|-------|-------|-------|-------|--------|----------------------|
| 6 | 60 years old or more | 663 | 677 | 709 | 627 | 701 | 722 | 741 | 745 | 759 | 761 | 826 | 856 | 895 | 947 | 938 | 1,009 | 936 | 993 | 1,032 | 1,175 | 1,198 | 1,267 | 1,428 | 20,605 | 60 years old or more |
| 5 | 50-59 | 835 | 898 | 973 | 923 | 940 | 1,017 | 1,064 | 1,059 | 949 | 917 | 855 | 895 | 984 | 851 | 908 | 927 | 964 | 945 | 932 | 1,059 | 1,066 | 1,105 | 1,309 | 22,375 | 50-59 |
| 4 | 40-49 | 642 | 638 | 689 | 670 | 691 | 661 | 728 | 725 | 671 | 642 | 723 | 770 | 850 | 856 | 810 | 809 | 848 | 865 | 902 | 943 | 887 | 808 | 950 | 17,778 | 40-49 |
| 2 | 20-29 | 765 | 798 | 761 | 704 | 696 | 748 | 649 | 633 | 594 | 545 | 522 | 535 | 507 | 486 | 477 | 470 | 489 | 468 | 517 | 514 | 502 | 472 | 686 | 13,538 | 20-29 |
| 3 | 30-39 | 604 | 668 | 687 | 672 | 770 | 783 | 766 | 786 | 743 | 744 | 697 | 744 | 730 | 687 | 620 | 615 | 591 | 566 | 594 | 572 | 526 | 584 | 630 | 15,379 | 30-39 |
| 1 | 19 years old or less | 63 | 73 | 62 | 55 | 66 | 57 | 57 | 43 | 39 | 65 | 46 | 34 | 38 | 36 | 37 | 56 | 64 | 45 | 44 | 55 | 56 | 47 | 26 | 1,164 | 19 years old or less |
| | total | 3,572 | 3,752 | 3,881 | 3,651 | 3,864 | 3,988 | 4,005 | 3,991 | 3,755 | 3,674 | 3,669 | 3,834 | 4,004 | 3,863 | 3,790 | 3,886 | 3,892 | 3,882 | 4,021 | 4,318 | 4,235 | 4,283 | 5,029 | 90,839 | total |

Transition of fatal and non-fatal accidents in workers scales in code no. 170209 others (1999-2021)

| code | Workers scale | 1999 | 2000 | 2001 | 2002 | 2003 | 2004 | 2005 | 2006 | 2007 | 2008 | 2009 | 2010 | 2011 | 2012 | 2013 | 2014 | 2015 | 2016 | 2017 | 2018 | 2019 | 2020 | 2021 | total | Workers scale |
|------|-------------------|-------|-------|-------|-------|-------|-------|-------|-------|------|------|------|-------|-------|------|------|-------|------|------|-------|-------|-------|-------|-------|--------|-------------------|
| 2 | 10-29 | 906 | 953 | 1,018 | 979 | 976 | 1,016 | 1,022 | 1,043 | 931 | 926 | 936 | 1,000 | 1,068 | 986 | 996 | 1,001 | 989 | 981 | 1,029 | 1,065 | 1,126 | 1,094 | 1,339 | 23,380 | 10-29 |
| 1 | 9 workers or less | 1,025 | 1,072 | 1,088 | 1,008 | 1,121 | 1,128 | 1,069 | 1,082 | 985 | 870 | 924 | 920 | 979 | 967 | 885 | 896 | 897 | 868 | 930 | 960 | 919 | 916 | 1,015 | 22,524 | 9 workers or less |
| 5 | 100-299 | 416 | 452 | 452 | 440 | 457 | 521 | 503 | 550 | 518 | 469 | 452 | 539 | 505 | 563 | 551 | 535 | 558 | 573 | 569 | 653 | 560 | 587 | 822 | 12,245 | 100-299 |
| 4 | 50-99 | 434 | 409 | 428 | 407 | 463 | 450 | 521 | 437 | 426 | 414 | 451 | 489 | 499 | 472 | 458 | 494 | 454 | 488 | 506 | 560 | 593 | 591 | 655 | 11,099 | 50-99 |
| 3 | 30-49 | 449 | 461 | 494 | 455 | 485 | 482 | 454 | 459 | 477 | 492 | 496 | 472 | 482 | 474 | 483 | 505 | 534 | 517 | 536 | 597 | 559 | 647 | 628 | 11,638 | 30-49 |

| | | | | | | | | | | | | | | | | | | | | | | | | | | |
|---|---------------------|-------|-------|-------|-------|-------|-------|-------|-------|-------|-------|-------|-------|-------|-------|-------|-------|-------|-------|-------|-------|-------|-------|-------|--------|---------------------|
| 6 | 300 workers or more | 342 | 405 | 401 | 362 | 362 | 391 | 436 | 420 | 418 | 503 | 410 | 414 | 471 | 401 | 417 | 455 | 460 | 455 | 451 | 483 | 478 | 448 | 570 | 9,953 | 300 workers or more |
| | total | 3,572 | 3,752 | 3,881 | 3,651 | 3,864 | 3,988 | 4,005 | 3,991 | 3,755 | 3,674 | 3,669 | 3,834 | 4,004 | 3,863 | 3,790 | 3,886 | 3,892 | 3,882 | 4,021 | 4,318 | 4,235 | 4,283 | 5,029 | 90,839 | total |

Transition of fatal and non-fatal accidents in months in code no. 170209 others (1999-2021)

| code | Month | 1999 | 2000 | 2001 | 2002 | 2003 | 2004 | 2005 | 2006 | 2007 | 2008 | 2009 | 2010 | 2011 | 2012 | 2013 | 2014 | 2015 | 2016 | 2017 | 2018 | 2019 | 2020 | 2021 | total | Month |
|------|-----------|-------|-------|-------|-------|-------|-------|-------|-------|-------|-------|-------|-------|-------|-------|-------|-------|-------|-------|-------|-------|-------|-------|-------|--------|-----------|
| 8 | August | 310 | 338 | 305 | 324 | 339 | 364 | 344 | 380 | 355 | 310 | 316 | 329 | 344 | 324 | 307 | 333 | 338 | 307 | 328 | 368 | 384 | 376 | 500 | 7,923 | August |
| 5 | May | 295 | 324 | 305 | 296 | 320 | 287 | 310 | 299 | 322 | 311 | 269 | 305 | 302 | 297 | 322 | 308 | 310 | 335 | 303 | 363 | 336 | 279 | 499 | 7,297 | May |
| 7 | July | 305 | 302 | 322 | 371 | 348 | 335 | 362 | 386 | 319 | 319 | 319 | 338 | 322 | 351 | 331 | 328 | 346 | 296 | 358 | 380 | 404 | 399 | 497 | 8,038 | July |
| 1 | January | 258 | 257 | 377 | 293 | 319 | 352 | 316 | 349 | 306 | 332 | 309 | 300 | 376 | 342 | 340 | 302 | 347 | 370 | 366 | 445 | 357 | 350 | 471 | 7,834 | January |
| 4 | April | 275 | 279 | 307 | 303 | 317 | 311 | 319 | 286 | 281 | 293 | 320 | 298 | 270 | 297 | 284 | 297 | 302 | 305 | 291 | 287 | 377 | 327 | 417 | 7,043 | April |
| 2 | February | 284 | 306 | 309 | 273 | 293 | 358 | 341 | 318 | 305 | 365 | 304 | 327 | 330 | 396 | 334 | 383 | 324 | 337 | 338 | 360 | 339 | 321 | 403 | 7,648 | February |
| 3 | March | 295 | 289 | 334 | 306 | 310 | 356 | 341 | 369 | 302 | 295 | 322 | 308 | 391 | 333 | 304 | 327 | 309 | 328 | 318 | 334 | 306 | 321 | 389 | 7,487 | March |
| 9 | September | 336 | 391 | 339 | 301 | 335 | 345 | 348 | 352 | 304 | 308 | 281 | 332 | 358 | 306 | 301 | 334 | 322 | 339 | 331 | 362 | 368 | 366 | 382 | 7,741 | September |
| 10 | October | 308 | 328 | 340 | 337 | 343 | 352 | 351 | 338 | 340 | 284 | 350 | 325 | 333 | 312 | 366 | 342 | 344 | 330 | 349 | 404 | 355 | 381 | 380 | 7,892 | October |
| 6 | June | 327 | 342 | 332 | 281 | 348 | 329 | 348 | 315 | 318 | 319 | 315 | 365 | 373 | 307 | 320 | 328 | 322 | 330 | 371 | 352 | 352 | 376 | 379 | 7,749 | June |
| 12 | December | 278 | 301 | 296 | 287 | 298 | 278 | 333 | 278 | 284 | 254 | 277 | 295 | 295 | 293 | 297 | 308 | 291 | 287 | 338 | 314 | 299 | 381 | 369 | 6,931 | December |
| 11 | November | 301 | 295 | 315 | 279 | 294 | 321 | 292 | 321 | 319 | 284 | 287 | 312 | 310 | 305 | 284 | 296 | 337 | 318 | 330 | 349 | 358 | 406 | 343 | 7,256 | November |
| | total | 3,572 | 3,752 | 3,881 | 3,651 | 3,864 | 3,988 | 4,005 | 3,991 | 3,755 | 3,674 | 3,669 | 3,834 | 4,004 | 3,863 | 3,790 | 3,886 | 3,892 | 3,882 | 4,021 | 4,318 | 4,235 | 4,283 | 5,029 | 90,839 | total |

Transition of fatal and non-fatal accidents in prefectures in code no. 170209 others (1999-2021)

| code | Prefecture | 1999 | 2000 | 2001 | 2002 | 2003 | 2004 | 2005 | 2006 | 2007 | 2008 | 2009 | 2010 | 2011 | 2012 | 2013 | 2014 | 2015 | 2016 | 2017 | 2018 | 2019 | 2020 | 2021 | total | Prefecture |
|------|------------|------|------|------|------|------|------|------|------|------|------|------|------|------|------|------|------|------|------|------|------|------|------|------|--------|------------|
| 13 | Tokyo | 411 | 462 | 494 | | 552 | | 603 | 613 | 607 | 542 | 577 | 623 | 678 | 674 | 629 | 655 | 677 | 681 | 746 | 793 | 709 | 656 | 748 | 13,130 | Tokyo |
| 27 | Osaka | 405 | 494 | 483 | | 539 | | 586 | 518 | 494 | 452 | 478 | 443 | 468 | 447 | 426 | 479 | 522 | 457 | 538 | 492 | 520 | 486 | 639 | 10,366 | Osaka |
| 14 | Kanagawa | 198 | 290 | 226 | | 230 | | 283 | 307 | 246 | 237 | 214 | 249 | 245 | 244 | 234 | 247 | 233 | 239 | 231 | 256 | 267 | 257 | 347 | 5,280 | Kanagawa |

| | | | | | | | | | | | | | | | | | | | | | | | | | | |
|----|-----------|-----|-----|-----|--|-----|--|-----|-----|-----|-----|-----|-----|-----|-----|-----|-----|-----|-----|-----|-----|-----|-----|-----|-------|-----------|
| 23 | Aichi | 182 | 211 | 220 | | 186 | | 218 | 211 | 183 | 224 | 223 | 202 | 188 | 189 | 234 | 229 | 232 | 248 | 220 | 261 | 285 | 248 | 300 | 4,694 | Aichi |
| 1 | Hokkaido | 240 | 249 | 243 | | 212 | | 187 | 188 | 186 | 149 | 172 | 194 | 194 | 175 | 206 | 187 | 178 | 186 | 193 | 205 | 196 | 214 | 258 | 4,212 | Hokkaido |
| 11 | Saitama | 113 | 101 | 108 | | 143 | | 145 | 167 | 157 | 160 | 145 | 163 | 151 | 182 | 153 | 129 | 137 | 136 | 154 | 154 | 162 | 202 | 213 | 3,175 | Saitama |
| 40 | Fukuoka | 99 | 117 | 140 | | 103 | | 122 | 139 | 111 | 90 | 92 | 140 | 145 | 150 | 148 | 142 | 136 | 147 | 154 | 192 | 195 | 182 | 205 | 2,949 | Fukuoka |
| 12 | Chiba | 99 | 130 | 121 | | 117 | | 157 | 129 | 163 | 190 | 124 | 134 | 126 | 120 | 111 | 132 | 150 | 151 | 130 | 185 | 158 | 152 | 200 | 2,979 | Chiba |
| 28 | Hyogo | 169 | 160 | 179 | | 131 | | 162 | 141 | 152 | 167 | 166 | 173 | 147 | 169 | 173 | 194 | 200 | 174 | 167 | 192 | 180 | 188 | 184 | 3,568 | Hyogo |
| 4 | Miyagi | 74 | 59 | 60 | | 62 | | 43 | 54 | 56 | 47 | 62 | 60 | 102 | 77 | 71 | 67 | 73 | 45 | 79 | 66 | 72 | 101 | 134 | 1,464 | Miyagi |
| 34 | Hiroshima | 99 | 111 | 138 | | 66 | | 96 | 88 | 67 | 80 | 73 | 78 | 92 | 73 | 74 | 96 | 75 | 84 | 84 | 73 | 74 | 102 | 104 | 1,827 | Hiroshima |
| 8 | Ibaraki | 53 | 42 | 69 | | 52 | | 45 | 59 | 67 | 65 | 52 | 83 | 68 | 60 | 60 | 76 | 74 | 70 | 70 | 88 | 76 | 84 | 96 | 1,409 | Ibaraki |
| 47 | Okinawa | 64 | 54 | 64 | | 72 | | 43 | 55 | 52 | 78 | 73 | 53 | 68 | 65 | 54 | 64 | 64 | 72 | 56 | 72 | 73 | 74 | 84 | 1,354 | Okinawa |
| 43 | Kumamoto | 56 | 42 | 46 | | 73 | | 36 | 56 | 65 | 37 | 52 | 47 | 62 | 58 | 72 | 61 | 54 | 80 | 65 | 59 | 71 | 87 | 84 | 1,263 | Kumamoto |
| 26 | Kyoto | 56 | 61 | 81 | | 78 | | 59 | 67 | 60 | 79 | 79 | 73 | 78 | 63 | 74 | 70 | 71 | 70 | 76 | 70 | 66 | 50 | 81 | 1,462 | Kyoto |
| 15 | Niigata | 34 | 60 | 60 | | 59 | | 58 | 32 | 59 | 45 | 54 | 56 | 66 | 54 | 52 | 50 | 46 | 66 | 39 | 50 | 49 | 52 | 74 | 1,115 | Niigata |
| 22 | Shizuoka | 84 | 62 | 90 | | 87 | | 88 | 62 | 74 | 64 | 51 | 65 | 69 | 60 | 64 | 59 | 65 | 62 | 73 | 99 | 78 | 87 | 72 | 1,515 | Shizuoka |
| 33 | Okayama | 39 | 42 | 33 | | 31 | | 60 | 51 | 33 | 46 | 44 | 43 | 50 | 45 | 45 | 31 | 47 | 37 | 44 | 36 | 50 | 48 | 71 | 926 | Okayama |
| 42 | Nagasaki | 32 | 33 | 41 | | 49 | | 33 | 43 | 46 | 48 | 60 | 43 | 42 | 56 | 47 | 36 | 40 | 44 | 41 | 40 | 37 | 56 | 61 | 928 | Nagasaki |
| 46 | Kagoshima | 47 | 60 | 60 | | 68 | | 50 | 61 | 62 | 58 | 51 | 55 | 43 | 38 | 31 | 20 | 40 | 33 | 35 | 39 | 37 | 62 | 60 | 1,010 | Kagoshima |
| 2 | Aomori | 60 | 51 | 52 | | 57 | | 53 | 47 | 44 | 49 | 43 | 44 | 52 | 48 | 45 | 54 | 32 | 36 | 40 | 44 | 38 | 50 | 59 | 998 | Aomori |
| 7 | Fukushima | 47 | 39 | 36 | | 49 | | 33 | 54 | 32 | 42 | 31 | 33 | 41 | 52 | 37 | 36 | 40 | 55 | 51 | 46 | 51 | 44 | 57 | 906 | Fukushima |
| 25 | Shiga | 21 | 21 | 19 | | 17 | | 30 | 36 | 39 | 30 | 31 | 38 | 37 | 35 | 28 | 22 | 40 | 22 | 35 | 24 | 37 | 35 | 56 | 653 | Shiga |
| 45 | Miyazaki | 61 | 64 | 47 | | 51 | | 52 | 56 | 54 | 51 | 51 | 61 | 67 | 52 | 48 | 61 | 48 | 43 | 31 | 32 | 43 | 45 | 55 | 1,073 | Miyazaki |
| 21 | Gifu | 41 | 30 | 35 | | 57 | | 38 | 41 | 39 | 35 | 24 | 34 | 35 | 30 | 28 | 49 | 42 | 41 | 46 | 49 | 51 | 48 | 55 | 848 | Gifu |
| 24 | Mie | 49 | 39 | 36 | | 67 | | 41 | 43 | 41 | 49 | 45 | 53 | 39 | 55 | 39 | 38 | 38 | 35 | 39 | 41 | 43 | 47 | 52 | 929 | Mie |
| 20 | Nagano | 55 | 66 | 68 | | 59 | | 66 | 61 | 53 | 47 | 61 | 55 | 59 | 62 | 54 | 74 | 64 | 61 | 52 | 71 | 76 | 40 | 46 | 1,250 | Nagano |
| 10 | Gunma | 91 | 75 | 56 | | 67 | | 47 | 56 | 45 | 41 | 33 | 20 | 32 | 34 | 50 | 41 | 34 | 40 | 43 | 40 | 35 | 33 | 46 | 959 | Gunma |

| | | | | | | | | | | | | | | | | | | | | | | | | | | |
|----|-----------|-------|-------|-------|--|-------|--|-------|-------|-------|-------|-------|-------|-------|-------|-------|-------|-------|-------|-------|-------|-------|-------|-------|--------|-----------|
| 3 | Iwate | 39 | 26 | 38 | | 25 | | 28 | 43 | 13 | 24 | 27 | 26 | 71 | 34 | 49 | 47 | 25 | 37 | 37 | 40 | 31 | 21 | 43 | 724 | Iwate |
| 6 | Yamagata | 41 | 26 | 19 | | 27 | | 31 | 27 | 23 | 26 | 28 | 28 | 33 | 30 | 28 | 32 | 25 | 26 | 28 | 23 | 20 | 32 | 43 | 596 | Yamagata |
| 9 | Tochigi | 45 | 29 | 42 | | 39 | | 55 | 42 | 32 | 31 | 37 | 34 | 39 | 32 | 48 | 33 | 32 | 27 | 33 | 46 | 41 | 53 | 42 | 812 | Tochigi |
| 17 | Ishikawa | 24 | 27 | 15 | | 30 | | 19 | 18 | 22 | 16 | 27 | 23 | 41 | 29 | 25 | 32 | 28 | 29 | 27 | 32 | 41 | 49 | 42 | 596 | Ishikawa |
| 5 | Akita | 40 | 29 | 40 | | 33 | | 24 | 33 | 32 | 22 | 19 | 32 | 22 | 30 | 22 | 18 | 16 | 18 | 22 | 30 | 34 | 34 | 41 | 591 | Akita |
| 29 | Nara | 20 | 25 | 32 | | 21 | | 38 | 35 | 28 | 31 | 46 | 31 | 27 | 38 | 30 | 28 | 41 | 53 | 49 | 68 | 42 | 47 | 39 | 769 | Nara |
| 37 | Kagawa | 33 | 18 | 29 | | 27 | | 27 | 43 | 41 | 27 | 32 | 32 | 32 | 32 | 30 | 43 | 47 | 38 | 38 | 33 | 39 | 69 | 36 | 746 | Kagawa |
| 35 | Yamaguchi | 26 | 26 | 34 | | 24 | | 29 | 37 | 34 | 19 | 25 | 45 | 31 | 35 | 28 | 33 | 25 | 18 | 22 | 35 | 29 | 27 | 33 | 615 | Yamaguchi |
| 38 | Ehime | 53 | 51 | 47 | | 54 | | 56 | 41 | 35 | 35 | 33 | 42 | 29 | 39 | 31 | 20 | 15 | 20 | 25 | 32 | 40 | 19 | 31 | 748 | Ehime |
| 39 | Kochi | 36 | 62 | 37 | | 38 | | 49 | 33 | 25 | 22 | 40 | 28 | 41 | 39 | 34 | 37 | 23 | 35 | 34 | 28 | 30 | 20 | 30 | 721 | Kochi |
| 32 | Shimane | 30 | 21 | 25 | | 26 | | 28 | 30 | 28 | 21 | 19 | 17 | 25 | 16 | 13 | 21 | 12 | 15 | 19 | 17 | 19 | 21 | 30 | 453 | Shimane |
| 19 | Yamanashi | 13 | 20 | 21 | | 21 | | 26 | 24 | 24 | 34 | 27 | 35 | 26 | 13 | 16 | 16 | 13 | 14 | 15 | 13 | 17 | 13 | 30 | 431 | Yamanashi |
| 16 | Toyama | 27 | 45 | 38 | | 29 | | 32 | 26 | 24 | 23 | 27 | 26 | 34 | 20 | 30 | 24 | 25 | 27 | 24 | 24 | 20 | 22 | 27 | 574 | Toyama |
| 18 | Fukui | 28 | 23 | 23 | | 17 | | 15 | 16 | 8 | 17 | 17 | 17 | 18 | 13 | 18 | 19 | 16 | 19 | 20 | 22 | 12 | 17 | 27 | 382 | Fukui |
| 36 | Tokushima | 28 | 26 | 38 | | 23 | | 20 | 24 | 16 | 22 | 17 | 17 | 8 | 27 | 25 | 23 | 17 | 16 | 18 | 18 | 22 | 17 | 26 | 448 | Tokushima |
| 41 | Saga | 30 | 19 | 24 | | 21 | | 27 | 30 | 21 | 37 | 33 | 33 | 32 | 27 | 25 | 17 | 20 | 32 | 24 | 20 | 16 | 33 | 24 | 545 | Saga |
| 30 | Wakayama | 34 | 15 | 25 | | 34 | | 35 | 27 | 33 | 37 | 23 | 20 | 30 | 23 | 30 | 17 | 25 | 25 | 31 | 41 | 25 | 34 | 20 | 584 | Wakayama |
| 44 | Oita | 35 | 31 | 37 | | 28 | | 26 | 19 | 23 | 20 | 24 | 26 | 16 | 17 | 13 | 21 | 29 | 11 | 16 | 21 | 21 | 17 | 12 | 463 | Oita |
| 31 | Tottori | 11 | 8 | 12 | | 13 | | 6 | 8 | 6 | 8 | 7 | 7 | 5 | 2 | 8 | 6 | 6 | 7 | 7 | 6 | 7 | 8 | 12 | 160 | Tottori |
| | total | 3,572 | 3,752 | 3,881 | | 3,864 | | 4,005 | 3,991 | 3,755 | 3,674 | 3,669 | 3,834 | 4,004 | 3,863 | 3,790 | 3,886 | 3,892 | 3,882 | 4,021 | 4,318 | 4,235 | 4,283 | 5,029 | 83,200 | total |

Data source : <https://anzeninfo.mhlw.go.jp/user/anzen/tok/anst00.htm>

Return to https://www.jisha.or.jp/english/statistics/202211_23.html