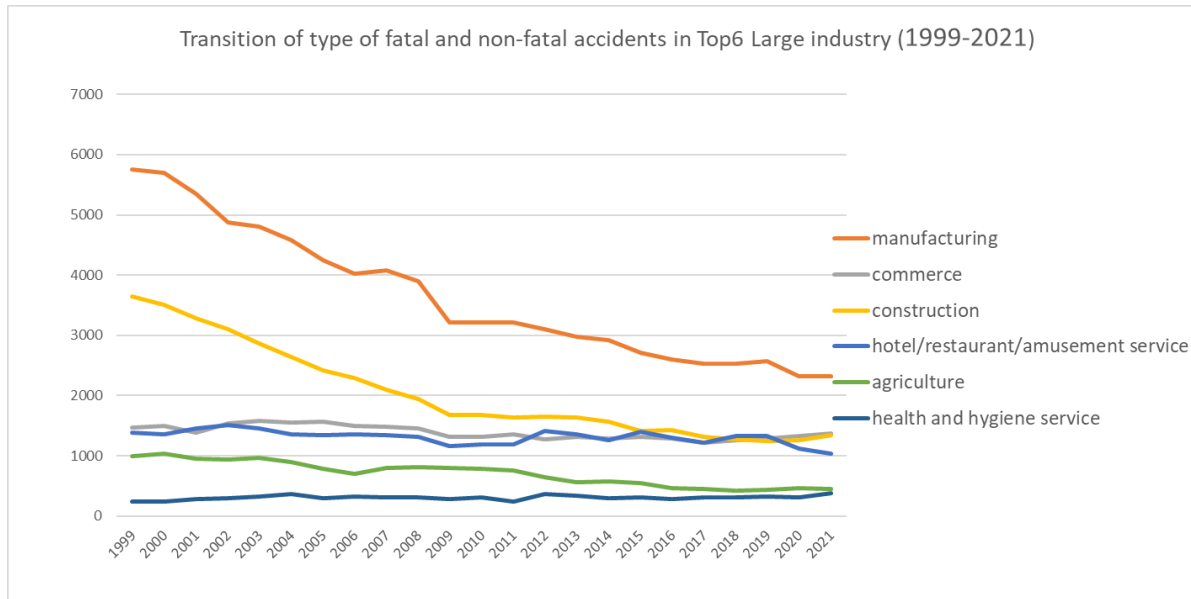
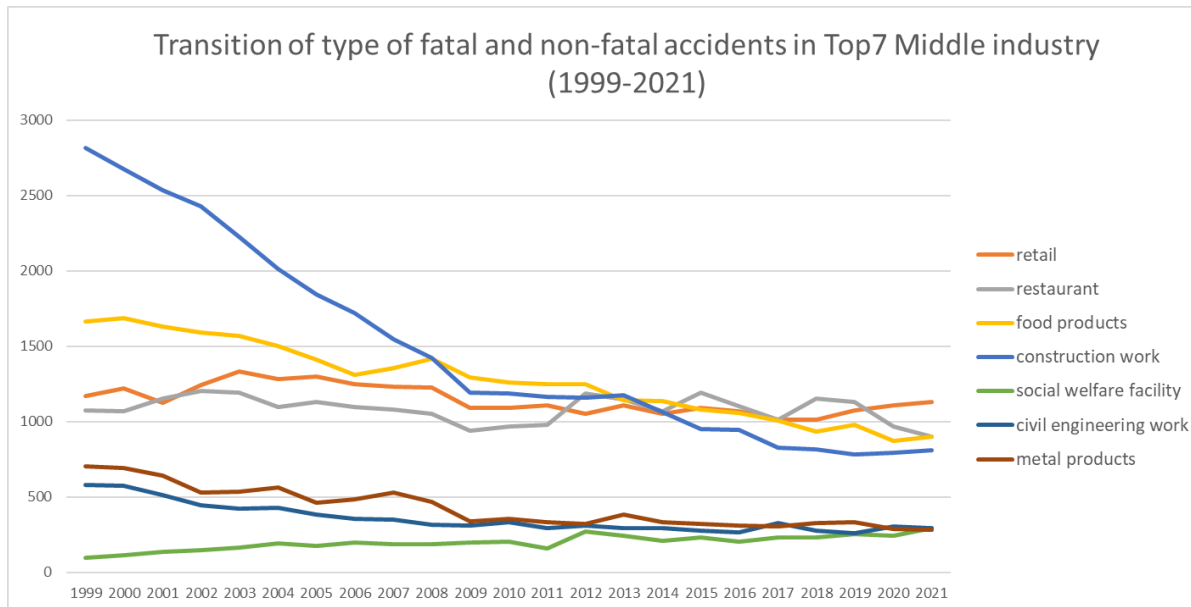


Transition of type of fatal and non-fatal accidents as code no. 8 cut (1999-2021)

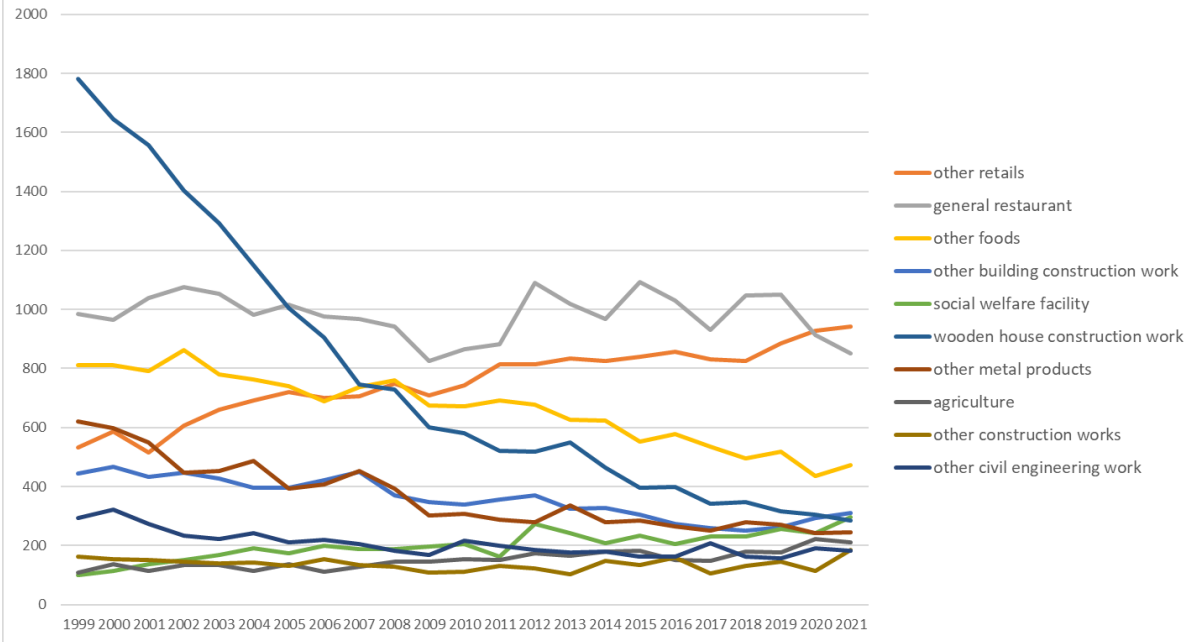


Transition of type of fatal and non-fatal accidents as code no. 8 cut in Large industry (1999-2021)



Transition of type of fatal and non-fatal accidents as code no. 8 cut in Middle Industry (1999-2021)

Transition of type of fatal and non-fatal accidents in Top10 Small industry (1999-2021)



Transition of type of fatal and non-fatal accidents as code no. 8 cut in Small Industry (1999-2021)

Transition of type of fatal and non-fatal accidents as code no. 8 cut in Large industry (1999-2021)

code	Large Industry	1999	2000	2001	2002	2003	2004	2005	2006	2007	2008	2009	2010	2011	2012	2013	2014	2015	2016	2017	2018	2019	2020	2021	total	Large Industry
01	manufacturing	5,759	5,705	5,356	4,869	4,808	4,575	4,247	4,016	4,073	3,891	3,217	3,213	3,209	3,098	2,972	2,920	2,716	2,601	2,523	2,534	2,571	2,320	2,319	83,512	manufacturing
08	commerce	1,471	1,493	1,388	1,536	1,579	1,557	1,570	1,501	1,487	1,454	1,318	1,314	1,357	1,277	1,320	1,284	1,311	1,286	1,221	1,260	1,282	1,324	1,374	31,964	commerce
03	construction	3,648	3,499	3,279	3,099	2,857	2,641	2,418	2,290	2,098	1,940	1,670	1,673	1,640	1,646	1,632	1,568	1,409	1,422	1,312	1,267	1,240	1,257	1,339	46,844	construction
14	hotel/restaurant/amusement service	1,387	1,359	1,458	1,503	1,454	1,357	1,335	1,352	1,345	1,308	1,162	1,181	1,187	1,406	1,355	1,251	1,392	1,295	1,217	1,321	1,333	1,112	1,031	30,101	hotel/restaurant/amusement service
06	agriculture	997	1,036	945	930	969	892	788	695	800	809	802	779	749	643	563	573	547	466	442	417	430	456	450	16,178	agriculture
13	health and hygiene service	235	245	279	299	317	364	300	318	308	304	287	314	242	359	333	290	315	278	314	303	327	313	373	7,017	health and hygiene service
15	commercial cleaning and livestock process	325	332	338	354	326	299	298	336	288	317	279	309	279	265	298	290	238	248	230	230	263	276	242	6,660	commercial cleaning and livestock process
17	others	274	318	267	282	259	260	241	236	246	236	208	213	187	188	156	175	185	158	157	181	179	148	171	4,925	others
04	transportation service	224	256	263	209	236	206	214	211	199	209	197	191	185	167	210	178	147	172	158	175	162	157	160	4,486	transportation service

07	livestock/fishery	72	76	116	87	99	80	88	74	83	86	61	71	68	66	77	56	59	58	57	69	52	76	59	1,690	livestock/fishery
12	education/research service	59	55	70	67	55	73	74	69	99	62	73	63	56	49	52	44	46	61	67	53	57	61	49	1,414	education/research service
05	cargo handling service	39	50	56	32	36	40	37	56	44	42	43	26	34	49	33	43	35	33	28	40	42	53	42	933	cargo handling service
09	financial business/advertisement	19	15	18	17	13	13	13	8	9	5	7	14	10	15	9	10	3	11	6	3	10	7	11	246	financial business/advertisement
16	public office	19	16	17	18	20	22	27	8	11	6	11	16	9	11	9	3	4	9	7	5	11	12	8	279	public office
11	telecommunication service		2	1	3	3	5	26	21	28	26	6	13	16	10	13	9	7	12	9	8	11	10	7	246	telecommunication service
10	movie/play service	5	5	7	2	5	7	3	2	7	7	6	2		4	2	5	6	4	4	6	2	4	2	97	movie/play service
02	mining	8	10	13	16	3	8	3	6	7	5	5	1	1	5	4	5	3	3	8	6	5	6	1	132	mining
	total	14,541	14,472	13,871	13,323	13,039	12,399	11,682	11,199	11,132	10,707	9,352	9,393	9,229	9,258	9,038	8,704	8,423	8,117	7,760	7,878	7,977	7,592	7,638	236,724	total

Transition of type of fatal and non-fatal accidents as code no. 8 cut in Middle industry (1999-2021)

code	Middle Industry	1999	2000	2001	2002	2003	2004	2005	2006	2007	2008	2009	2010	2011	2012	2013	2014	2015	2016	2017	2018	2019	2020	2021	total	Middle Industry
0802	retail	1,169	1,220	1,122	1,245	1,334	1,284	1,301	1,251	1,233	1,227	1,091	1,093	1,108	1,051	1,108	1,054	1,092	1,069	1,014	1,013	1,075	1,107	1,132	26,393	retail
1402	restaurant	1,075	1,066	1,154	1,203	1,194	1,094	1,132	1,094	1,080	1,050	938	969	976	1,188	1,149	1,070	1,190	1,105	1,015	1,154	1,131	970	901	24,898	restaurant
0101	food products	1,666	1,688	1,630	1,589	1,569	1,500	1,412	1,309	1,355	1,415	1,293	1,257	1,251	1,250	1,144	1,136	1,080	1,056	1,004	933	980	874	898	29,289	food products
0302	construction work	2,814	2,677	2,535	2,427	2,226	2,015	1,841	1,721	1,544	1,422	1,190	1,189	1,162	1,156	1,177	1,062	953	945	828	814	783	792	809	34,082	construction work
1302	social welfare facility	99	114	136	150	167	191	175	198	188	188	197	204	161	272	243	207	234	205	230	230	256	241	296	4,582	social welfare facility
0301	civil engineering work	578	575	513	446	424	430	384	356	352	318	310	334	296	308	296	294	275	266	326	278	260	305	294	8,218	civil engineering work
0112	metal products	706	695	640	529	534	563	463	482	529	466	339	354	334	322	386	333	319	310	302	325	330	285	284	9,830	metal products
0104	wood products	996	947	875	677	731	650	617	527	511	470	407	407	380	353	368	351	321	295	278	313	297	255	245	11,271	wood products
1501	commercial cleaning and livestock process	325	332	338	354	326	299	298	336	288	317	279	309	279	265	298	290	238	248	230	230	263	276	242	6,660	commercial cleaning and livestock process
0602	forestry	888	898	831	795	835	779	652	585	672	663	656	626	598	468	399	393	364	316	295	237	254	233	239	12,676	forestry
0303	other construction works	256	247	231	226	207	196	193	213	202	200	170	150	182	182	159	212	181	211	158	175	197	160	236	4,544	other construction works
0601	agriculture	109	138	114	135	134	113	136	110	128	146	146	153	151	175	164	180	183	150	147	180	176	223	211	3,502	agriculture
0801	wholesale	241	201	204	206	173	198	195	189	175	144	163	147	166	154	149	159	162	150	146	150	146	144	171	3,933	wholesale
1702	others	269	306	260	266	241	239	233	226	235	225	206	209	178	176	147	169	181	150	152	176	172	142	168	4,726	others
0105	furniture	641	654	564	570	529	490	412	399	359	348	284	313	303	247	228	265	209	203	175	185	170	161	163	7,872	furniture

0111	nonferrous metal making	43	44	42	42	34	36	44	38	25	25	24	20	28	28	23	27	24	25	22	20	16	19	17	666	making
1303	other health and hygiene service	12	10	8	16	12	22	17	16	18	16	20	13	10	13	18	14	14	13	10	13	12	7	11	315	other health and hygiene service
0402	road passenger transport service	16	18	15	9	17	16	20	14	12	22	13	14	16	15	14	16	11	12	7	8	10	7	10	312	road passenger transport service
1601	public office	19	16	17	18	20	22	27	8	11	6	11	16	9	11	9	3	4	9	7	5	11	12	8	279	public office
0902	advertisement and mediator	9	9	11	11	7	9	8	4	6	2	2	9	6	15	5	7	3	9	4	2	5	6	8	157	advertisement and mediator
1101	telecommunication service		2	1	3	3	5	26	21	28	26	6	13	16	10	13	9	7	12	9	8	11	10	7	246	telecommunication service
0502	harbor transportation service	10	12	19	10	14	9	8	14	10	12	11	6	4	6	6	3	5	5	5	4	12	9	7	201	harbor transportation service
0401	railroad/water transportation/airline service	9	8	8	4	12	14	10	7	9	11	10	7	5	7	10	11	9	3	11	9	7	7	7	195	railroad/water transportation/airline service
1701	dispatch service	5	12	7	16	18	21	8	10	11	11	2	4	9	12	9	6	4	8	5	5	7	6	3	199	dispatch service
0116	electric/gas/water service	5	4	4	6	2	6	4	5	4	3	6	2	6	8	4	5	3	1	1	4		3	3	89	electric/gas/water service
0901	financial business	10	6	7	6	6	4	5	4	3	3	5	5	4		4	3		2	2	1	5	1	3	89	financial business
1001	movie/play service	5	5	7	2	5	7	3	2	7	7	6	2		4	2	5	6	4	4	6	2	4	2	97	movie/play service
0404	other transportation service	3	2		3	2		2	6	2		2	1	5		1	3		1	3	1			2	39	other transportation service
0202	quarrying	6	9	13	16	2	7	3	5	7	5	4	1	1	4	2	5	3	3	8	5	5	6	1	121	quarrying
0203	other mining	1				1	1		1			1			1	2					1				9	other mining
0201	coal mining	1	1																						2	coal mining
	total	14,541	14,472	13,871	13,323	13,039	12,399	11,682	11,199	11,132	10,707	9,352	9,393	9,229	9,258	9,038	8,704	8,423	8,117	7,760	7,878	7,977	7,592	7,638	236,724	total

Transition of type of fatal and non-fatal accidents as code no. 8 cut in Small industry (1999-2021)

code	Small Industry	1999	2000	2001	2002	2003	2004	2005	2006	2007	2008	2009	2010	2011	2012	2013	2014	2015	2016	2017	2018	2019	2020	2021	total	Small Industry
080209	other retails	532	586	514	606	661	693	719	701	705	749	710	744	814	815	835	826	839	856	831	826	885	929	943	17,319	other retails
140201	general restaurant	986	966	1,038	1,075	1,053	981	1,017	975	968	941	826	866	882	1,089	1,019	968	1,092	1,031	930	1,048	1,049	914	851	22,565	general restaurant

010801	chemical products	9	15	10	12	20	19	18	10	8	12	12	6	11	12	6	9	5	10	9	6	8	6	6	239	chemical products
010709	other printing and bookbinding	7	5	11	7	8	10	3	12	8	10	5	6	7	5	6	5	6	4	4	8	5	5	6	153	other printing and bookbinding
130309	other health and hygiene service	5	5	4	9	10	13	9	6	7	9	6	8	7	6	6	5	3	6	1	5	3	3	6	142	other health and hygiene service
040202	bus service	4	10		3	8	7	8	7	8	10	7	8	3	6	10	9	4	5	2	3	8	4	6	140	bus service
011202	screw products	5	8	6	14	13	10	8	8	6	7	1	3	4	11	5	4	5	2	5	2	4	2	6	139	screw products
080204	fuel retail	21	17	19	11	16	14	13	18	8	10	7	4	10	7	4	7	6	12	6	2	12	8	5	237	fuel retail
011201	western tableware/cutting tool products	13	13	20	14	13	9	5	15	7	14	3	9	13	3	11	7	9	6	7	6	10	9	5	221	western tableware/cutting tool products
130301	bathroom	7	5	4	7	2	9	8	10	11	7	14	5	3	7	12	9	11	7	9	8	9	4	5	173	bathroom
010803	pharmaceuticals	5	12	4	8	6	6	7	6	8	4	5	5	5	11	5	3	8	2	5	7	6	4	5	137	pharmaceuticals
010802	chemical fiber	3	1	8	7	3	2	5	1	5	2	1	3		3	2		1	1	2	2	1		5	58	chemical fiber
010301	over/under wear	35	26	27	22	24	16	17	14	11	14	15	7	8	6	13	8	9	5	13	7	8	6	4	315	over/under wear
010105	alcoholic drinks	15	11	9	8	9	21	14	11	8	7	11	5	6	5	11	7	5	7	6	12	4	6	4	202	alcoholic drinks
011204	metal plating products	17	13	13	7	8	8	9	6	13	9	4	4	9	8	4	8		11	8	6	7	4	4	180	metal plating products
040201	taxi service	12	8	15	5	8	8	11	7	4	7	6	6	11	9	4	6	7	7	2	5	2	3	4	157	taxi service
010903	pottery products	11	9	10	9	8	11	4	8	7	3		5	4	5	5	4	4	3	4	2	4	5	4	129	pottery products
011303	optical instruments	2	6	3	13	8	7	11	10	8	7	5	3	7	7	4	1	2	6	4	2	5	1	4	126	optical instruments
040101	railroad service	5	4	6	1	7	8	6	4	5	8	9	7	4	5	9	6	6	1	6	6	5	2	4	124	railroad service
011503	railway vehicle products	7	5	4	1	2	2		4	4	3	4	1	3	1	4	2	4	5	3	2	4	2	4	71	railway vehicle products
170101	dispatch service	5	12	7	16	18	21	8	10	11	11	2	4	9	12	9	6	4	8	5	5	7	6	3	199	dispatch service
080205	newspaper retail	10	15	9	10	9	6	11	3	4	9	6	8	4	8	2	3	6	1	1	4	4	3	3	139	newspaper retail
080301	haircut	4	5	3	5	10	9	7	4	9	6	4	3	9	4	4	8	2	6	6	10	7	6	3	134	haircut
030105	bridge construction work	6	12	8	5	17	3	10	1	6	5	3	8	3	4	4	7	3	5	6	5	4	3	3	131	bridge construction work
010203	weaving	8	16	11	5	10	5	4	5	3		3	2	4	2	1	5	2	1	2	4	3	1	3	100	weaving
010204	dyeing	4	9	4	3	6	3	5	4	3	3	5	3	2		1	1	1	1	4		6	1	3	72	dyeing
010804	petroleum/coal products	9	4	4	3	2	5	4	4	2	5	1	2	3	2	2				1			2	3	58	petroleum/coal products
010202	cotton-spinning	18	9	6	13	4	2	7	6	7	4	1	3		4		2	1	1		4	2	1	2	97	cotton-spinning
080102	furniture/fittings wholesale	5	9	9	4	5	5	4	5	6	2	3	2	3	2	2	1	6	1	4	2	1	5	2	88	furniture/fittings wholesale

030111	port/seaside construction work	4	6	7	4	3	4	2		2	2	3		2	3	1	2	3	2	2	4	4	3	2	65	port/seaside construction work
040103	airline service	2	3	1	3	3	6	2	2	3	1			1			2	1	1	3	2	1	3	2	42	airline service
040409	other transportation service	3	2		3	2		2	6	2		2	1	5		1	3		1	3	1			2	39	other transportation service
090101	banking/trust business	5	1	4	1	3	2	3	1	1	2	2	3			2	1			1		1		2	35	banking/trust business
011603	city water service	1	1		2		3	1	3			3		4	4	1	1	1	1		3		2	2	33	city water service
011402	electrical appliance	17	14	16	17	17	14	11	18	12	12	8	9	12	6	6	10	6	3	7	7	5	7	1	235	electrical appliance
010807	leather products	16	13	9	15	12	13	8	10	2	5	6	5	2	5	6	4	7	2	3	3	7	4	1	158	leather products
030108	sand collapse prevention civil engineering work	12	10	10	3	17	8	6	4	5	5	7	4	4	3	4	7	2	3	4	4	4	5	1	132	sand collapse prevention civil engineering work
011302	measuring instruments	4	9	8	5	9	5	4	3	6	2	4	4	4	4	6	2	6		5	3	1		1	95	measuring instruments
010905	other ceramic products	5	6	4	4	4	7		1	7	7	2	3	2	4	2	5	4	4	1	1	2	3	1	79	other ceramic products
020201	quarrying	6	5	7	8	1	2	3	1	4	4	4	1	1	1	2	2	2	2	4	2	3	2	1	68	quarrying
010809	chemical fertilizer products	6	4	3	2	4	5	4	2	8	5	2		7		2	2	2	1	1	1	1	2	1	65	chemical fertilizer products
100109	other movie/play service	2	4	3	1	4	4	2	2	4	3	3			4	1	2	3	2	3	4	2	3	1	57	other movie/play service
040102	water transportation service	2	1	1		2		2	1	1	2	1			2	1	3	2	1	2	1	1	2	1	29	water transportation service
100101	movie production and delivery service	3	1	3	1	1	1	1		2	2	2	1			1	3	2	1	1	2			1	29	movie production and delivery service
090109	other financial business	3	1	1	2	2	2	2	1	1		1	2			1	2		1	1			1	1	25	other financial business
011601	electric utility service		1	2	1	1	2	2	1		2	1	1	1		2	2	2		1			1	1	24	electric utility service
030101	hydroelectric plant construction work	1		4	3			2	1	1	2	1	1				1	1	1				2	1	22	hydroelectric plant construction work
120101	auto mobile practical training	2		1	1	2		1	1	3		1				1	2	2	2				1	1	21	auto mobile practical training
010201	silk-reeling	1	4	3				1				1			1		1		2					1	15	silk-reeling
010702	bookbinding	10	11	11	7	14	7	6	13	14	10	8	4	5	5	3	2	6	4	5	5	1	6		157	bookbinding
011101	nonferrous metals/rolling products	7	7	8	10	2	1	6	8	6	1	1	3	10	5	6	2	3	4	3	3	6	2		104	nonferrous metals/rolling products
030104	railway construction work	9	4	1	7	1	4	5	4	4	8	1	4	1	1	2	6	2	5	3	2	3	5		82	railway construction work
010502	metal furniture	9	4	4	6	4	5	2	3	6	1		1	4	4	2	1	3	3		3		3		68	metal furniture
010808	painting products	2	1	8	3	4	3	3	6	3	1	2	2		2		1	1	2			2	2		48	painting products

020302	petroleum mining																									petroleum mining
	total	14,541	14,472	13,871	13,323	13,039	12,399	11,682	11,199	11,132	10,707	9,352	9,393	9,229	9,258	9,038	8,704	8,423	8,117	7,760	7,878	7,977	7,592	7,638	236,724	total

Data source : <https://anzeninfo.mhlw.go.jp/user/anzen/tok/anst00.htm>

Return to https://www.jisha.or.jp/english/statistics/202212_02.html