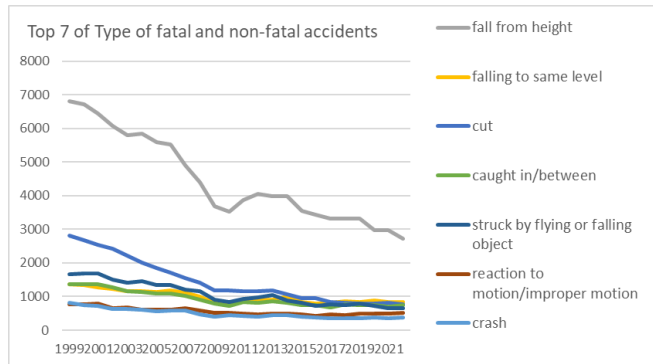
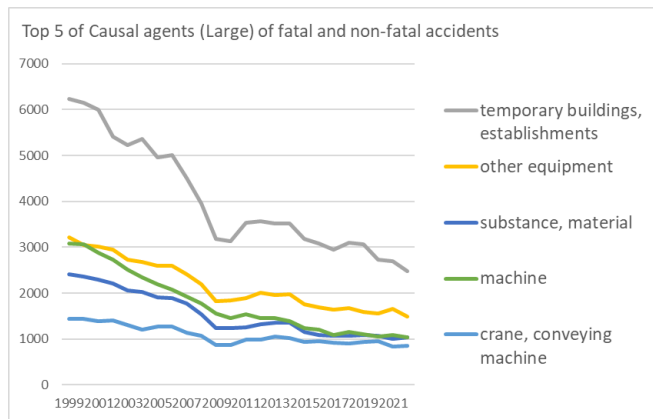


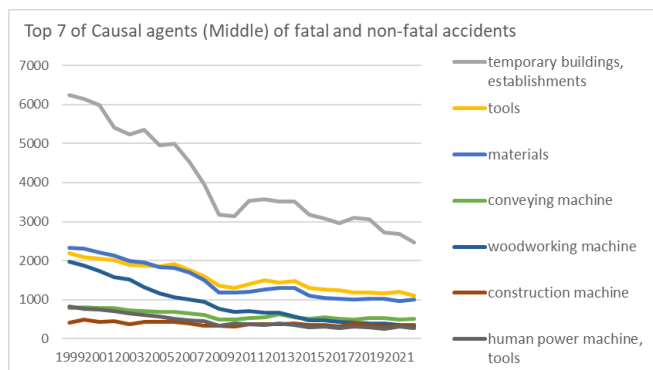
Transition of fatal and non-fatal accidents in 0302 construction work in Japan (1999-2022)



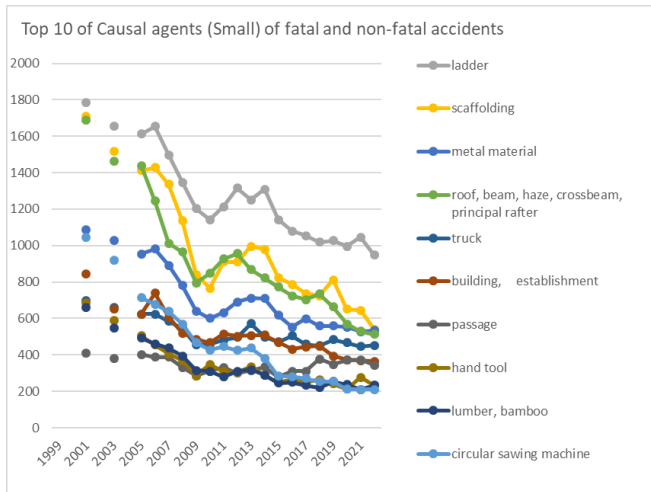
Transition of Top 7 of Type of fatal and non-fatal accidents in 0302 construction work in Japan (1999-2022)



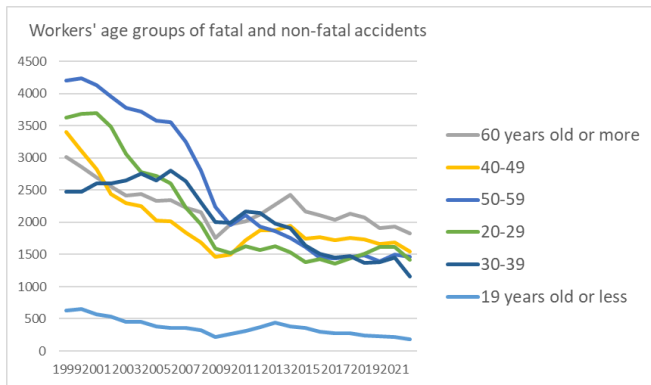
Transition of Top 5 of Causal agents (Large) of fatal and non-fatal accidents in 0302 construction work in Japan (1999-2022)



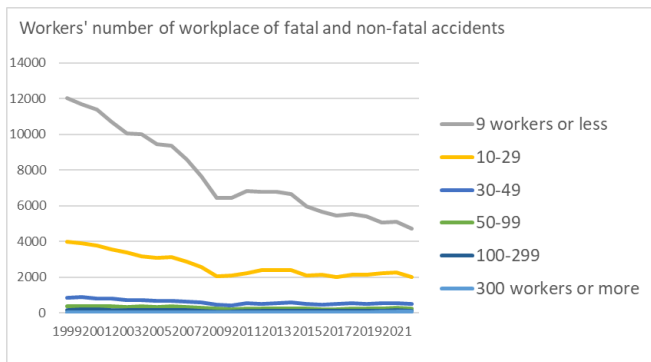
Transition of Top 7 of Causal agents (Middle) of fatal and non-fatal accidents in 0302 construction work in Japan (1999-2022)



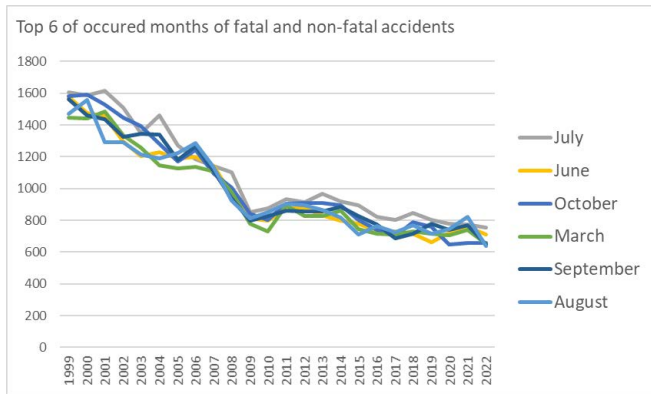
Transition of Top 10 of Causal agents (Small) of fatal and non-fatal accidents in 0302 construction work in Japan (1999-2022)



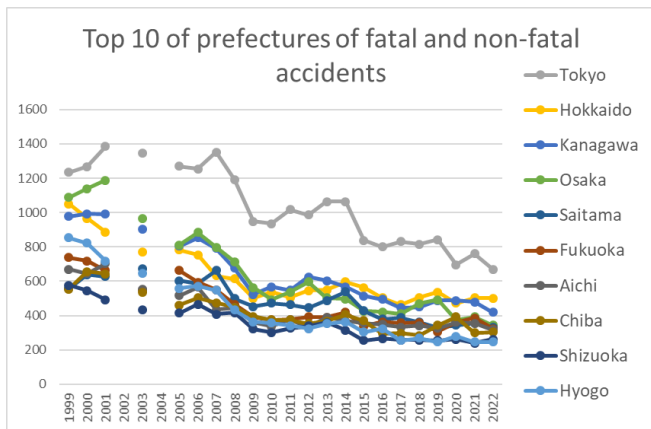
Transition of workers' age groups of fatal and non-fatal accidents in 0302 construction work in Japan (1999-2022)



Transition of workers' number of workplace of fatal and non-fatal accidents in 0302 construction work in Japan (1999-2022)



Transition of Top 6 of occurred months of fatal and non-fatal accidents in 0302 construction work in Japan (1999-2022)



Transition of Top 10 of prefectures of fatal and non-fatal accidents in 0302 construction work in Japan (1999-2022)

Transition of Type of fatal and non-fatal accidents in 0302 construction work in Japan (1999-2022)

Type of accidents	1999	2000	2001	2002	2003	2004	2005	2006	2007	2008	2009	2010	2011	2012	2013	2014	2015	2016	2017	2018	2019	2020	2021	2022	total	Type of accidents
fall from height	6,805	6,730	6,443	6,068	5,794	5,857	5,597	5,514	4,897	4,409	3,689	3,528	3,870	4,052	3,984	3,975	3,548	3,428	3,322	3,313	3,309	2,974	2,986	2,723	106,815	fall from height
falling to same level	1,357	1,342	1,265	1,223	1,162	1,166	1,143	1,185	1,118	992	813	821	889	915	904	1,010	831	791	819	865	830	889	842	838	24,010	falling to same level
cut	2,814	2,677	2,535	2,427	2,226	2,015	1,841	1,721	1,544	1,422	1,190	1,189	1,162	1,156	1,177	1,062	953	945	828	814	783	792	809	760	34,842	cut
caught in/between	1,365	1,373	1,370	1,264	1,161	1,127	1,089	1,095	1,033	907	791	725	831	806	860	811	748	746	678	771	736	740	700	755	22,482	caught in/between

struck by flying or falling object	1,668	1,688	1,686	1,511	1,409	1,459	1,353	1,353	1,202	1,159	916	847	935	975	1,037	884	819	733	769	756	789	717	665	658	25,988	struck by flying or falling object
reaction to motion/improper motion	777	759	790	664	674	609	597	615	657	585	515	515	505	468	485	486	467	433	478	459	491	503	500	519	13,551	reaction to motion/improper motion
crash	823	754	716	636	624	608	563	584	584	474	400	442	436	399	437	440	394	377	362	345	367	372	364	381	11,882	crash
crashed by	591	574	606	608	517	488	481	500	489	411	313	351	340	366	328	347	360	308	298	355	335	286	354	319	9,925	crashed by
collapse	414	426	401	454	390	342	361	384	395	313	245	248	294	274	300	285	229	265	246	237	262	230	209	198	7,402	collapse
traffic accident (public road)	335	344	282	341	299	296	300	325	242	275	192	227	284	263	260	322	264	276	244	259	240	266	200	190	6,526	traffic accident (public road)
contact to high/low-temperature	97	83	109	105	103	152	106	103	99	87	57	131	133	110	116	125	106	106	102	162	105	140	98	102	2,637	contact to high/low-temperature
injury to the sole of the foot	140	116	154	118	134	124	120	119	120	78	68	78	90	103	79	95	75	68	65	77	66	71	78	56	2,292	injury to the sole of the foot
others	62	65	60	42	71	63	50	52	56	51	33	37	65	50	47	37	40	21	34	34	30	157	539	49	1,745	others
contact to harmful substance	33	40	47	44	59	42	58	69	37	42	27	30	45	37	25	36	41	46	36	49	41	27	33	36	980	contact to harmful substance
electric shock	21	24	17	28	17	24	20	18	19	18	15	16	16	23	11	17	13	10	8	17	17	13	12	10	404	electric shock
unclassifiable	19	19	13	12	10	12	10	26	13	7	7	1	4	6	5	6	5	6	2	8	3	3	5	4	206	unclassifiable
fire	14	9	16	20	11	6	4	12	14	9	9	10	3	7	5	7	8	8	5	22	6	5	2	2	214	fire
explosion	12	5	21	6	4	5	4	8	11	2	5	9	1	5	4	4	6		3	3	2	4	4	2	130	explosion
burst	3	3	4	8	4	6	3	6	4	1	2	1	2	4	3	4	2	1	3	2	3	5	1	2	77	burst
traffic accident (others)	7	4	3	2	2	2	2	4	5	1	1	2	2	2	2	2		1	2	4	2		2	2	56	traffic accident (others)
drown	3	2			2	1	1	1		2	2		51						2	2					69	drown
total	17,360	17,037	16,538	15,581	14,673	14,404	13,703	13,694	12,539	11,245	9,290	9,208	9,958	10,021	10,069	9,955	8,909	8,569	8,306	8,554	8,417	8,194	8,403	7,606	272,233	total

Transition of Causal agents (Large) of fatal and non-fatal accidents in 0302 construction work in Japan (1999-2022)

Causal (L) agents	1999	2000	2001	2002	2003	2004	2005	2006	2007	2008	2009	2010	2011	2012	2013	2014	2015	2016	2017	2018	2019	2020	2021	2022	total	Causal (L) agents
temporary buildings, establishments	6,240	6,149	5,990	5,411	5,226	5,357	4,966	5,004	4,512	3,953	3,186	3,137	3,526	3,567	3,523	3,515	3,182	3,075	2,954	3,091	3,058	2,729	2,688	2,477	96,516	temporary buildings, establishments
other equipment	3,210	3,046	3,010	2,940	2,728	2,677	2,590	2,600	2,414	2,192	1,819	1,842	1,894	2,011	1,966	1,979	1,758	1,689	1,641	1,669	1,594	1,559	1,660	1,496	51,984	other equipment
substance, material	2,405	2,368	2,299	2,212	2,054	2,025	1,914	1,898	1,780	1,546	1,233	1,246	1,261	1,326	1,354	1,348	1,149	1,096	1,074	1,068	1,081	1,064	1,006	1,042	36,849	substance, material
machine	3,090	3,072	2,873	2,728	2,513	2,350	2,187	2,081	1,920	1,771	1,549	1,451	1,542	1,460	1,459	1,396	1,240	1,213	1,094	1,152	1,106	1,061	1,081	1,033	42,422	machine
crane, conveying machine	1,441	1,441	1,382	1,412	1,310	1,208	1,274	1,268	1,139	1,067	870	866	993	990	1,056	1,026	931	953	921	896	929	947	833	853	26,006	crane, conveying machine
environment	266	259	266	214	208	237	236	284	210	214	146	244	320	251	269	259	238	204	216	282	208	260	233	248	5,772	environment
others	361	357	322	317	299	252	243	268	252	229	241	205	208	201	190	208	213	169	229	221	210	353	724	242	6,514	others
load	347	345	396	347	335	298	293	291	312	273	246	217	214	215	252	224	198	170	177	175	231	221	178	215	6,170	load
total	17,360	17,037	16,538	15,581	14,673	14,404	13,703	13,694	12,539	11,245	9,290	9,208	9,958	10,021	10,069	9,955	8,909	8,569	8,306	8,554	8,417	8,194	8,403	7,606	272,233	total

Transition of Causal agents (Middle) of fatal and non-fatal accidents in 0302 construction work in Japan (1999-2022)

Causal (M) agents	1999	2000	2001	2002	2003	2004	2005	2006	2007	2008	2009	2010	2011	2012	2013	2014	2015	2016	2017	2018	2019	2020	2021	2022	total	Causal (M) agents
temporary buildings, establishments	6,240	6,149	5,990	5,411	5,226	5,357	4,966	5,004	4,512	3,953	3,186	3,137	3,526	3,567	3,523	3,515	3,182	3,075	2,954	3,091	3,058	2,729	2,688	2,477	96,516	temporary buildings, establishments
tools	2,200	2,095	2,061	2,022	1,893	1,868	1,854	1,924	1,766	1,592	1,371	1,304	1,395	1,499	1,437	1,488	1,310	1,255	1,251	1,193	1,186	1,156	1,207	1,103	37,430	tools
materials	2,336	2,303	2,215	2,138	1,986	1,963	1,839	1,807	1,704	1,496	1,189	1,193	1,205	1,272	1,312	1,294	1,098	1,048	1,025	1,012	1,034	1,022	967	1,002	35,460	materials
conveying machine	792	807	797	790	734	704	696	695	650	603	495	502	538	549	628	545	512	546	507	503	538	523	496	506	14,656	conveying machine

woodworking machine	1,965	1,872	1,737	1,586	1,512	1,323	1,168	1,074	1,001	938	768	686	701	666	676	578	480	469	426	416	403	388	352	355	21,540	woodworking machine
construction machine	416	492	429	452	379	426	438	441	400	342	329	321	384	372	370	404	360	354	320	394	349	323	345	327	9,167	construction machine
human power machine, tools	831	763	758	715	657	613	568	522	478	448	329	394	375	363	389	361	300	307	279	312	286	254	323	272	10,897	human power machine, tools
natural environment	266	259	266	214	208	237	236	284	210	214	146	244	320	251	269	259	238	204	216	282	208	260	233	248	5,772	natural environment
load	347	345	396	347	335	298	293	291	312	273	246	217	214	215	252	224	198	170	177	175	231	221	178	215	6,170	load
no causal agent	227	218	220	226	201	185	166	178	164	170	193	162	161	155	143	153	156	128	169	163	172	198	184	189	4,281	no causal agent
metal manufacturing machine	369	376	378	382	344	318	316	317	280	285	248	250	258	254	219	239	209	199	213	200	192	179	198	182	6,405	metal manufacturing machine
crane	331	341	335	346	320	249	307	300	271	252	202	167	210	207	222	188	190	189	185	183	184	186	165	179	5,709	crane
vehicle	318	293	250	276	256	255	271	273	218	212	173	197	245	234	206	293	229	218	229	210	207	238	172	168	5,641	vehicle
general machine	327	321	316	302	257	275	256	243	226	192	198	189	194	156	185	170	180	178	127	135	155	164	171	164	5,081	general machine
other equipments, facilities	104	121	111	108	106	118	98	102	100	98	76	87	76	98	88	84	99	78	67	97	79	103	92	95	2,285	other equipments, facilities
other causal agent	115	119	78	73	84	55	63	72	69	43	39	32	44	38	41	42	50	38	58	50	35	154	536	49	1,977	other causal agent
hazards, harmful substances	69	65	84	74	68	62	75	91	76	50	44	53	56	54	42	54	51	48	49	56	47	42	39	40	1,389	hazards, harmful substances
electric equipment	25	25	32	37	30	32	33	26	33	23	22	28	23	27	26	22	24	26	25	28	24	24	22	14	631	electric equipment
welding equipment	26	22	30	28	23	22	17	7	24	15	11	19	12	11	13	16	17	12	12	27	13	8	8	9	402	welding

																											equipment
unclassifiable	19	20	24	18	14	12	14	18	19	16	9	11	3	8	6	13	7	3	2	8	3	1	4	4	256	unclassifiable	
pressure vessel	14	15	12	11	13	14	12	8	4	12	6	6	9	10	9	3	3	11	4	7	3	6	6	3	201	pressure vessel	
power transmission mechanism	9	6	11	5	16	5	6	4	10	7	4	3	4	7	4	3	7	6	3	4	5	4	8	3	144	power transmission mechanism	
mobile silviculture machine																	2	2	2		1		1	2	10	mobile silviculture machine	
kiln, caldron	5	4	6	18	5	5	7	8	3	1	3	3	4	1	4	4	3		3	1	2	7	2		99	kiln, caldron	
engine	4	5	2	1	5	3	3	2	3	7	2	2	1	5	5	2	2	5	3	3	1	3	6		75	engine	
chemical facilities	5	1		1	1	5	1	3	6	3	1	1		2		1	2			4	1	1			39	chemical facilities	
total	17,360	17,037	16,538	15,581	14,673	14,404	13,703	13,694	12,539	11,245	9,290	9,208	9,958	10,021	10,069	9,955	8,909	8,569	8,306	8,554	8,417	8,194	8,403	7,606	272,233	total	

Transition of Causal agents (Small) of fatal and non-fatal accidents in 0302 construction work in Japan (1999-2022)

Causal (S) agents	1999	2000	2001	2002	2003	2004	2005	2006	2007	2008	2009	2010	2011	2012	2013	2014	2015	2016	2017	2018	2019	2020	2021	2022	total	Causal (S) agents
ladder			1,785		1,654		1,613	1,655	1,497	1,346	1,202	1,142	1,213	1,315	1,251	1,309	1,142	1,080	1,054	1,018	1,028	996	1,047	947	25,294	ladder
scaffolding			1,710		1,517		1,412	1,429	1,336	1,135	842	766	910	910	995	980	824	787	737	724	811	651	644	541	19,661	scaffolding
metal material			1,088		1,028		955	982	892	781	640	601	632	690	711	710	617	553	598	559	560	553	527	535	14,212	metal material
roof, beam, haze, crossbeam, principal rafter			1,690		1,461		1,438	1,244	1,012	964	795	848	926	956	869	822	773	725	703	734	664	569	529	514	18,236	roof, beam, haze, crossbeam, principal rafter
truck			697		660		623	624	584	547	455	459	481	497	572	498	472	504	458	451	484	468	447	452	10,433	truck
building, establishment			845		651		624	738	607	519	485	468	516	503	507	510	469	431	445	448	395	373	370	365	10,269	building, establishment
passage			410		380		402	387	387	331	285	310	332	299	315	333	277	311	310	378	348	371	374	344	6,884	passage
hand tool			684		588		505	454	406	368	286	349	309	305	336	287	250	265	249	264	241	213	278	234	6,871	hand tool
lumber, bamboo			662		547		492	460	437	395	315	310	280	311	319	290	246	249	234	220	254	237	211	233	6,702	lumber, bamboo









other electrical equipment			11		9		9	7	7	7	5	12	5	1	9	4	7	10	3	4	3	9	7	4	133	other electrical equipment
power press			6		6		8	7	3	4	5	3	5	4	4	3	4	8	11	13	4	10	4	4	116	power press
power transmission mechanism			11		16		6	4	10	7	4	3	4	7	4	3	7	6	3	4	5	4	8	3	119	power transmission mechanism
shearing machine			8		7		8	2	5	4	3	5	3	1	3	4	3	5	4	2	2	4	3	3	79	shearing machine
other vehicles			5		3		4	4	4	6	4	7	1	5	1	3	2	2	3	2	3	1	4	3	67	other vehicles
gondola			6		4		4	2	3	3	4	2	5	1	6	3		1	6	3	1		1	3	58	gondola
loader			1		4		3	1	3	1		2			3	1	1		1		2		1	3	27	loader
inflammable gas			12		8		7	6	6	6	8	14	11	8	7	6	8	3	5	3	5	2	1	2	128	inflammable gas
other pressure vessels			8		8		8	6	3	10	5	4	7	6	6	2	2	9	4	4	2	6	4	2	106	other pressure vessels
arc welding equipment			13		8		2	1	7	6	5	6	2	3	5	9	9	4	4	6	3	3	3	2	101	arc welding equipment
abnormal environment					7		2	1	1	3		6	10	5	1		6	3	3	1	1	1		2	53	abnormal environment
rough terrain hauler			8		2		3	4		4	2		4	2	2	4	1	1	3	2	2	4	2	2	52	rough terrain hauler
forging pressure hammer			1		1						1										2	2		2	9	forging pressure hammer
other mobile silviculture machine																								2	2	other mobile silviculture machine
inflammable substance			20		19		13	18	22	10	9	10	1	11	8	8	7	8	9	7	8	7	6	1	202	inflammable substance
chamfering machine, router, woodworking milling machine			17		8		15	12	8	6	10	5	5	2	2	2	2	1	1	7	2	1	4	1	111	chamfering machine, router, woodworking milling machine
electric power facilities			8		4		3	6	11	2	5	5	6	7	4	2	5	4	5	2	5	3	4	1	92	electric power facilities



derrick crane										1		1														2	derrick crane	
industrial dryer															1											1	2	industrial dryer
mobile logging machine																										1	1	mobile logging machine
simple skyline yarding equipment																										1	1	simple skyline yarding equipment
straddle carrier																										1	1	straddle carrier
radiation										1																	1	radiation
printing machine																												printing machine
skyline yarding machine																												skyline yarding machine
total	17,360	17,037	16,538	15,581	14,673	14,404	13,703	13,694	12,539	11,245	9,290	9,208	9,958	10,021	10,069	9,955	8,909	8,569	8,306	8,554	8,417	8,194	8,403	7,606	272,233	total		

Transition of workers' age groups of fatal and non-fatal accidents in 0302 construction work in Japan (1999-2022)

Age	1999	2000	2001	2002	2003	2004	2005	2006	2007	2008	2009	2010	2011	2012	2013	2014	2015	2016	2017	2018	2019	2020	2021	2022	total	Age
60 years old or more	3,013	2,862	2,704	2,559	2,419	2,439	2,336	2,350	2,229	2,161	1,760	1,975	2,020	2,120	2,277	2,428	2,166	2,108	2,045	2,138	2,081	1,910	1,930	1,825	53,855	60 years old or more
40-49	3,404	3,116	2,828	2,441	2,305	2,247	2,032	2,018	1,839	1,683	1,462	1,496	1,717	1,879	1,879	1,943	1,747	1,768	1,727	1,758	1,729	1,667	1,692	1,551	47,928	40-49
50-59	4,201	4,243	4,130	3,955	3,779	3,718	3,577	3,555	3,247	2,805	2,242	1,962	2,108	1,929	1,864	1,755	1,619	1,449	1,444	1,465	1,485	1,393	1,499	1,463	60,887	50-59
20-29	3,634	3,692	3,695	3,489	3,064	2,787	2,727	2,609	2,223	1,967	1,597	1,521	1,624	1,575	1,630	1,537	1,376	1,433	1,359	1,442	1,506	1,614	1,614	1,419	51,134	20-29
30-39	2,476	2,472	2,605	2,606	2,649	2,758	2,648	2,807	2,639	2,311	2,006	1,992	2,173	2,152	1,982	1,909	1,640	1,515	1,457	1,476	1,374	1,376	1,450	1,164	49,637	30-39
19 years old or less	632	652	576	531	457	455	383	355	362	318	223	262	316	366	437	383	361	296	274	275	242	234	218	184	8,792	19 years old or less
total	17,360	17,037	16,538	15,581	14,673	14,404	13,703	13,694	12,539	11,245	9,290	9,208	9,958	10,021	10,069	9,955	8,909	8,569	8,306	8,554	8,417	8,194	8,403	7,606	272,233	total

Transition of workers' number of workplace of fatal and non-fatal accidents in 0302 construction work in Japan (1999-2022)

Workers scale	1999	2000	2001	2002	2003	2004	2005	2006	2007	2008	2009	2010	2011	2012	2013	2014	2015	2016	2017	2018	2019	2020	2021	2022	total	Workers scale
9 workers or less	12,011	11,695	11,371	10,688	10,053	10,019	9,459	9,343	8,570	7,647	6,454	6,435	6,834	6,791	6,764	6,628	5,959	5,652	5,450	5,545	5,414	5,055	5,084	4,710	183,631	9 workers or less
10-29	3,961	3,894	3,785	3,550	3,377	3,146	3,071	3,117	2,869	2,566	2,058	2,074	2,233	2,388	2,396	2,373	2,095	2,123	2,006	2,124	2,121	2,202	2,274	1,993	63,796	10-29

30-49	834	873	795	780	706	705	663	683	626	602	445	421	537	487	524	573	482	473	505	532	515	539	539	499	14,338	30-49
50-99	354	368	372	367	344	352	335	380	303	274	221	173	237	233	250	249	244	206	210	225	231	239	286	249	6,702	50-99
100-299	168	173	175	164	159	154	146	141	134	127	84	80	97	94	105	101	103	92	115	102	97	112	149	110	2,982	100-299
300 workers or more	32	34	40	32	34	28	29	30	37	29	28	25	20	28	30	31	26	23	20	26	39	47	71	45	784	300 workers or more
total	17,360	17,037	16,538	15,581	14,673	14,404	13,703	13,694	12,539	11,245	9,290	9,208	9,958	10,021	10,069	9,955	8,909	8,569	8,306	8,554	8,417	8,194	8,403	7,606	272,233	total

Transition of occurred months of fatal and non-fatal accidents in 0302 construction work in Japan (1999-2022)

Month	1999	2000	2001	2002	2003	2004	2005	2006	2007	2008	2009	2010	2011	2012	2013	2014	2015	2016	2017	2018	2019	2020	2021	2022	total	Month
July	1,605	1,586	1,616	1,507	1,349	1,459	1,271	1,186	1,142	1,104	853	877	935	914	969	918	893	824	803	848	804	780	773	753	25,769	July
June	1,575	1,476	1,455	1,295	1,203	1,228	1,189	1,197	1,143	959	812	798	874	873	831	800	781	737	731	715	662	720	761	710	23,525	June
October	1,583	1,593	1,526	1,447	1,392	1,283	1,170	1,243	1,094	1,004	843	802	903	909	908	893	805	740	701	787	760	648	658	659	24,351	October
March	1,447	1,441	1,483	1,337	1,258	1,146	1,129	1,138	1,109	975	779	730	893	829	825	861	743	714	713	729	717	708	742	654	23,100	March
September	1,561	1,459	1,437	1,324	1,343	1,339	1,182	1,267	1,107	940	798	825	862	855	856	886	827	774	686	714	779	742	771	650	23,984	September
August	1,469	1,559	1,292	1,293	1,215	1,190	1,223	1,285	1,130	926	812	853	906	896	867	817	712	763	725	771	716	747	821	639	23,627	August
May	1,426	1,348	1,368	1,316	1,205	1,125	1,098	1,098	1,012	938	707	698	742	851	851	825	677	673	631	633	679	596	626	609	21,732	May
April	1,362	1,385	1,366	1,366	1,202	1,118	1,178	1,063	966	984	759	735	745	758	808	902	708	679	670	703	708	732	713	598	22,208	April
November	1,507	1,427	1,387	1,345	1,157	1,296	1,177	1,167	1,078	871	767	798	850	847	899	784	720	701	736	723	695	651	682	592	22,857	November
February	1,308	1,350	1,331	1,126	1,157	1,094	1,057	1,025	983	960	764	713	724	799	734	806	698	709	634	648	681	673	635	592	21,201	February
January	1,218	1,106	1,119	1,058	1,013	1,006	996	1,013	895	821	707	659	680	722	718	743	714	637	626	646	644	551	628	585	19,505	January
December	1,299	1,307	1,158	1,167	1,179	1,120	1,033	1,012	880	763	689	720	844	768	803	720	631	618	650	637	572	646	593	565	20,374	December
total	17,360	17,037	16,538	15,581	14,673	14,404	13,703	13,694	12,539	11,245	9,290	9,208	9,958	10,021	10,069	9,955	8,909	8,569	8,306	8,554	8,417	8,194	8,403	7,606	272,233	total

Transition of prefectures of fatal and non-fatal accidents in 0302 construction work in Japan (1999-2022)

Prefecture	1999	2000	2001	2002	2003	2004	2005	2006	2007	2008	2009	2010	2011	2012	2013	2014	2015	2016	2017	2018	2019	2020	2021	2022	total	Prefecture
Tokyo	1,234	1,267	1,384		1,345		1,269	1,253	1,352	1,191	948	935	1,016	985	1,063	1,063	838	799	832	816	842	695	760	669	22,556	Tokyo
Hokkaido	1,050	967	887		768		782	754	631	614	500	536	506	546	549	596	563	502	463	505	537	472	502	500	13,730	Hokkaido
Kanagawa	978	993	990		904		804	854	792	675	523	567	548	626	603	567	514	495	445	449	487	488	478	419	14,199	Kanagawa

Osaka	1,089	1,139	1,188		966		810	885	797	714	563	492	537	597	504	497	425	421	410	470	493	374	393	343	14,107	Osaka
Saitama	556	639	627		673		603	585	662	499	453	472	464	446	488	539	427	380	388	362	328	343	357	331	10,622	Saitama
Fukuoka	737	718	663		550		662	594	549	465	390	375	376	392	390	418	336	363	358	360	305	362	385	324	10,072	Fukuoka
Aichi	669	645	702		553		517	566	434	445	361	338	376	330	391	369	356	349	333	341	325	362	354	317	9,433	Aichi
Chiba	555	657	642		535		462	504	474	448	395	375	375	352	368	406	370	295	296	283	343	392	299	304	9,130	Chiba
Shizuoka	577	546	493		435		415	465	407	416	322	302	325	340	359	314	256	265	258	258	256	261	240	262	7,772	Shizuoka
Hyogo	854	823	717		644		559	571	548	432	363	356	341	323	353	363	303	324	255	269	247	280	246	247	9,418	Hyogo
Niigata	526	484	509		395		480	478	403	412	347	359	324	318	336	276	287	228	230	246	247	247	254	209	7,595	Niigata
Kyoto	409	436	388		378		317	317	294	252	184	218	227	225	239	233	204	170	187	202	160	169	169	163	5,541	Kyoto
Fukushima	291	263	276		275		234	231	187	194	179	146	226	254	235	262	187	181	164	145	154	187	194	157	4,622	Fukushima
Ibaraki	340	337	310		249		282	229	219	212	170	170	279	241	176	192	167	165	181	153	154	164	237	155	4,782	Ibaraki
Nagano	353	322	335		300		258	244	230	189	152	161	163	163	162	167	187	152	147	168	147	157	146	154	4,457	Nagano
Miyagi	268	288	242		280		237	214	222	196	174	167	334	340	280	239	216	239	179	156	191	156	172	153	4,943	Miyagi
Iwate	227	201	212		165		175	171	156	133	126	110	186	156	187	148	148	149	140	135	122	120	144	144	3,455	Iwate
Hiroshima	419	418	436		342		318	291	279	234	188	190	192	188	192	176	179	188	156	182	182	178	159	143	5,230	Hiroshima
Kagoshima	217	203	168		164		170	150	131	139	109	95	122	131	158	153	161	148	143	162	159	159	132	137	3,311	Kagoshima
Mie	383	369	362		308		259	297	253	220	193	200	215	169	186	174	158	164	165	181	155	126	157	131	4,825	Mie
Kumamoto	265	263	205		207		208	198	190	162	144	140	144	148	169	139	158	184	248	189	149	158	158	131	3,957	Kumamoto
Okinawa	77	107	79		82		108	100	94	108	112	87	102	108	109	143	124	112	158	150	164	139	143	126	2,532	Okinawa
Aomori	267	222	249		197		151	158	134	131	111	113	127	122	131	141	108	140	125	127	142	117	146	125	3,284	Aomori
Gunma	303	298	281		228		216	207	186	161	126	143	147	162	157	175	146	118	138	163	139	133	139	119	3,885	Gunma
Yamagata	261	256	233		180		210	192	138	140	96	134	122	167	161	139	117	111	100	156	107	102	159	111	3,392	Yamagata
Gifu	365	353	333		280		238	237	233	186	159	145	147	122	152	146	127	128	121	139	128	131	139	110	4,119	Gifu
Akita	256	216	213		211		171	222	161	147	131	128	150	145	123	154	115	116	115	131	115	101	123	109	3,353	Akita
Okayama	338	321	318		273		244	222	209	160	140	154	154	143	145	169	145	120	140	129	131	119	96	106	3,976	Okayama
Miyazaki	165	148	130		144		123	128	119	103	81	87	80	90	71	88	60	88	87	85	84	99	91	103	2,254	Miyazaki
Nagasaki	211	193	184		178		127	169	147	95	96	85	116	112	87	101	105	104	100	99	107	124	120	95	2,755	Nagasaki

Tochigi	209	214	172		177		164	160	154	165	140	136	168	162	156	110	127	137	111	113	92	109	122	90	3,188	Tochigi
Oita	258	243	193		219		181	191	150	126	105	92	124	92	105	117	101	107	70	91	96	108	94	85	2,948	Oita
Saga	133	124	127		108		127	110	101	95	83	65	85	92	103	94	95	89	72	86	80	94	63	85	2,111	Saga
Ehime	253	209	206		190		158	160	137	124	99	101	103	134	107	90	104	93	92	98	80	91	99	82	2,810	Ehime
Toyama	236	200	216		151		176	148	136	123	100	102	111	138	109	93	110	90	97	94	98	94	112	81	2,815	Toyama
Shiga	179	161	173		157		118	165	124	119	81	73	94	92	79	94	87	62	65	58	66	88	68	81	2,284	Shiga
Kochi	196	178	167		136		139	103	104	95	83	72	69	71	72	61	77	71	84	70	76	70	66	75	2,135	Kochi
Ishikawa	112	148	129		106		88	107	75	85	100	80	80	83	89	97	75	76	75	81	71	65	82	74	1,978	Ishikawa
Wakayama	223	197	201		163		150	153	129	110	90	101	86	113	97	88	82	85	78	84	82	73	90	73	2,548	Wakayama
Tokushima	174	171	157		154		121	99	109	109	82	89	87	91	93	77	79	75	75	60	81	64	56	71	2,174	Tokushima
Yamaguchi	242	236	194		186		167	166	119	124	96	101	124	91	108	95	109	127	87	95	96	83	101	66	2,813	Yamaguchi
Nara	234	224	220		190		172	140	127	145	117	101	92	96	113	101	87	77	80	81	81	78	78	66	2,700	Nara
Kagawa	188	164	179		140		159	143	124	97	93	94	75	83	93	81	74	90	72	96	81	48	76	66	2,316	Kagawa
Shimane	155	115	131		126		118	106	90	74	56	53	72	57	67	57	50	60	48	46	50	55	53	64	1,703	Shimane
Fukui	135	136	126		105		105	122	97	77	67	86	74	74	49	52	62	42	47	83	67	63	59	55	1,783	Fukui
Yamanashi	107	119	94		79		81	81	72	59	35	53	50	64	62	65	68	51	38	48	64	50	53	55	1,448	Yamanashi
Tottori	86	106	97		77		70	54	60	45	27	29	43	47	43	36	35	39	53	59	56	46	39	40	1,187	Tottori
total	17,360	17,037	16,538	15,581	14,673	14,404	13,703	13,694	12,539	11,245	9,290	9,208	9,958	10,021	10,069	9,955	8,909	8,569	8,306	8,554	8,417	8,194	8,403	7,606	272,233	total

Data Source : <https://anzeninfo.mhlw.go.jp/user/anzen/tok/anst00.html> MHLW, Jaan

Return to [https://www.jisha.or.jp/english/statistics/202312\\_05.html](https://www.jisha.or.jp/english/statistics/202312_05.html)