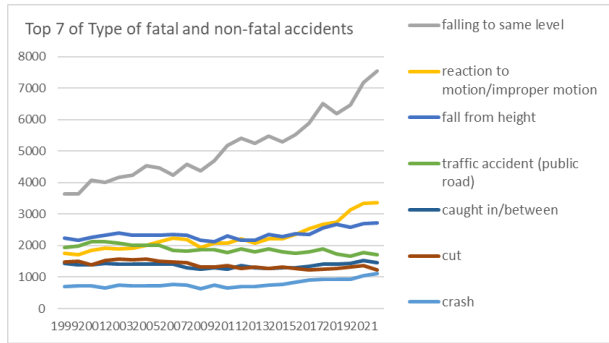
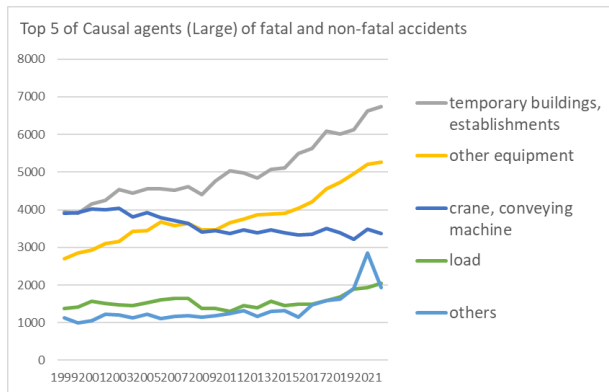


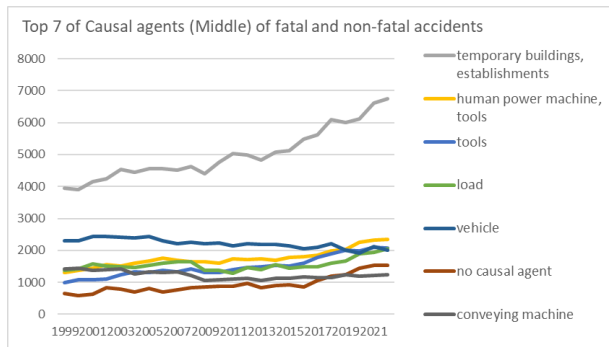
Transition of fatal and non-fatal accidents in 08 commerce in Japan (1999-2022)



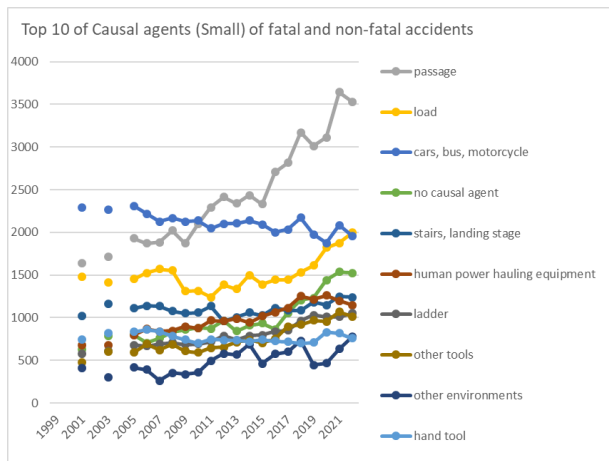
Transition of Top 7 of Type of fatal and non-fatal accidents in 08 commerce in Japan (1999-2022)



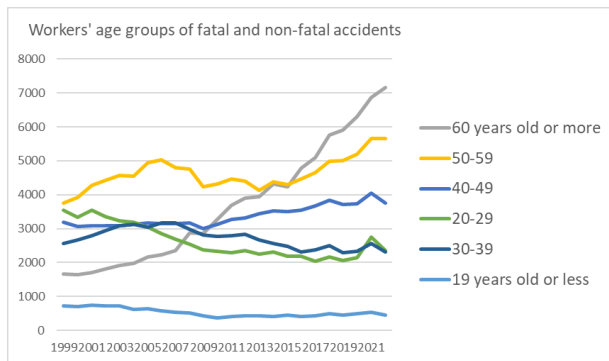
Transition of Top 5 of Causal agents (Large) of fatal and non-fatal accidents in 08 commerce in Japan (1999-2022)



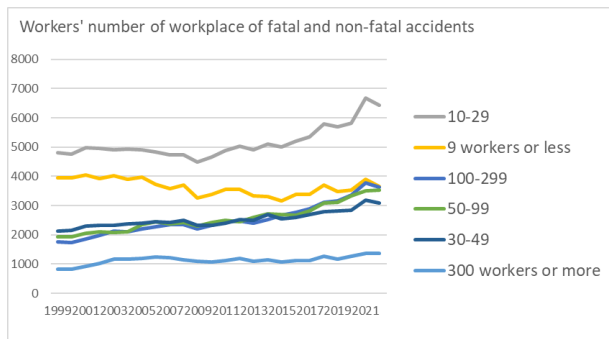
Transition of Top 7 of Causal agents (Middle) of fatal and non-fatal accidents in 08 commerce in Japan (1999-2022)



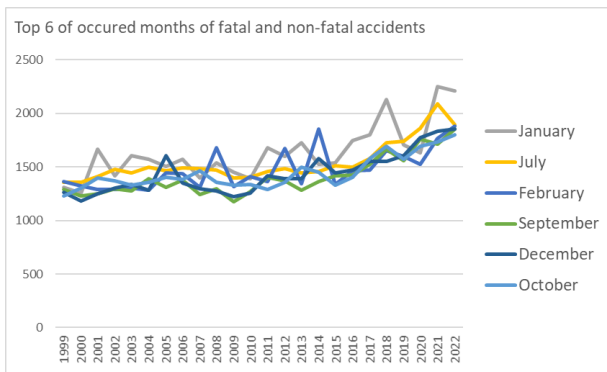
Transition of Top 10 of Causal agents (Small) of fatal and non-fatal accidents in 08 commerce in Japan (1999-2022)



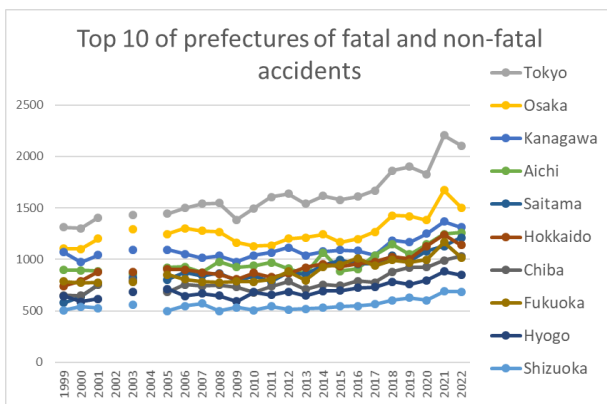
Transition of workers' age groups of fatal and non-fatal accidents in 08 commerce in Japan (1999-2022)



Transition of workers' number of workplace of fatal and non-fatal accidents in 08 commerce in Japan (1999-2022)



Transition of Top 6 of occurred months of fatal and non-fatal accidents in 08 commerce in Japan (1999-2022)



Transition of Top 10 of prefectures of fatal and non-fatal accidents in 08 commerce in Japan (1999-2022)

Transition of Type of fatal and non-fatal accidents in 08 commerce in Japan (1999-2022)

Type of accidents	1999	2000	2001	2002	2003	2004	2005	2006	2007	2008	2009	2010	2011	2012	2013	2014	2015	2016	2017	2018	2019	2020	2021	2022	total	Type of accidents
falling to same level	3,636	3,645	4,082	4,002	4,171	4,242	4,541	4,472	4,232	4,578	4,378	4,689	5,181	5,405	5,250	5,474	5,298	5,536	5,899	6,523	6,201	6,456	7,176	7,541	122,608	falling to same level
reaction to motion/improper motion	1,761	1,702	1,852	1,916	1,884	1,920	2,013	2,125	2,231	2,194	1,947	2,073	2,090	2,217	2,079	2,208	2,214	2,355	2,531	2,672	2,756	3,145	3,336	3,375	54,596	reaction to motion/improper motion
fall from height	2,232	2,182	2,264	2,331	2,396	2,338	2,325	2,334	2,344	2,342	2,182	2,127	2,299	2,172	2,166	2,348	2,287	2,377	2,354	2,569	2,672	2,578	2,703	2,717	56,639	fall from height
traffic accident (public road)	1,948	1,977	2,129	2,136	2,083	2,016	2,018	1,999	1,840	1,817	1,882	1,878	1,771	1,886	1,811	1,899	1,806	1,768	1,792	1,897	1,726	1,672	1,773	1,703	45,227	traffic accident (public road)
caught in/between	1,429	1,395	1,387	1,446	1,416	1,417	1,407	1,418	1,405	1,309	1,250	1,309	1,248	1,357	1,293	1,278	1,292	1,300	1,352	1,405	1,413	1,435	1,533	1,467	32,961	caught

																										environment
other equipments, facilities	318	339	333	338	324	430	425	470	481	461	450	511	465	512	562	588	534	572	508	588	579	632	697	712	11,829	other equipments, facilities
materials	829	771	763	756	719	797	722	712	687	633	540	550	539	597	547	580	535	574	551	559	513	532	567	552	15,125	materials
general machine	655	647	660	660	680	642	684	646	625	643	580	627	610	566	596	502	562	560	541	578	558	546	595	525	14,488	general machine
other causal agent	391	354	344	322	350	370	356	346	331	283	240	271	323	319	288	349	343	253	381	340	363	444	1,296	381	9,038	other causal agent
crane	183	196	206	166	211	158	156	163	165	164	148	134	112	126	124	150	119	109	114	153	136	121	137	136	3,587	crane
construction machine	92	75	83	79	79	74	74	65	70	81	69	60	73	58	74	70	85	76	57	62	72	73	83	88	1,772	construction machine
hazards, harmful substances	123	108	119	134	107	126	130	122	101	102	88	91	109	108	106	86	75	110	86	90	91	103	102	85	2,502	hazards, harmful substances
metal manufacturing machine	123	77	91	96	96	96	70	87	76	77	75	66	56	75	56	62	48	67	71	77	63	78	73	65	1,821	metal manufacturing machine
electric equipment	23	23	15	34	27	23	19	17	31	38	19	20	28	21	36	36	35	17	41	41	44	44	52	52	736	electric equipment
woodworking machine	89	98	70	81	76	81	86	74	65	68	62	52	65	68	55	57	57	46	46	59	44	58	69	43	1,569	woodworking machine
kiln, caldron	17	8	8	16	14	12	21	23	13	31	19	18	22	15	23	21	23	16	21	35	28	25	21	38	488	kiln, caldron
unclassifiable	89	56	74	78	66	69	67	62	68	60	53	45	47	33	37	39	39	23	36	38	27	22	24	20	1,172	unclassifiable
power transmission mechanism	38	30	26	26	36	24	23	20	22	27	19	16	27	23	32	20	19	27	20	20	15	16	18	16	560	power transmission mechanism
welding equipment	7	6	5	11	10	7	4	5	3	14	8	9	5	3	8	3	8	5	4	5	13	3	9	10	165	welding equipment
pressure vessel	26	24	31	20	25	9	14	16	21	16	17	11	13	18	13	15	10	15	13	8	11	7	22	7	382	pressure vessel
chemical facilities	1	1	1			3	5	1	1					1	1	2	1	1	2		1	1	2	3	28	chemical

human power cranes			13		8		16	14	9	6	3	5	7	6	2	8	6	2	7	15	86	162	281	433	1,089	human power cranes
other causal agent			344		350		356	346	331	283	240	271	323	319	288	349	343	253	381	340	363	444	1,296	381	7,601	other causal agent
forklift			358		369		366	363	385	360	293	274	308	284	276	282	278	333	321	299	354	315	343	354	6,515	forklift
food manufacturing machine			359		372		359	345	345	391	336	384	382	319	336	293	329	331	318	333	317	298	306	260	6,713	food manufacturing machine
other materials			257		277		251	257	284	246	248	221	231	238	218	242	216	219	196	210	193	201	225	228	4,658	other materials
other general power machines			262		269		276	258	242	220	222	211	201	212	225	189	199	212	188	205	209	215	252	227	4,494	other general power machines
metal material			323		288		301	300	273	251	189	222	196	240	216	243	203	228	240	245	215	217	239	224	4,853	metal material
high/cold temperature environment			112		41		38	58	51	63	43	72	86	87	96	79	70	73	71	168	142	114	108	137	1,709	high/cold temperature environment
lumber, bamboo			131		111		137	116	91	94	85	78	85	93	87	71	91	105	78	85	74	81	82	73	1,848	lumber, bamboo
conveyor			74		74		85	85	81	68	65	62	53	71	73	85	76	69	52	55	76	49	58	72	1,383	conveyor
opening			48		46		30	30	45	31	50	44	31	38	42	52	49	28	50	53	54	45	51	63	880	opening
machine/equipment as load			95		69		80	82	80	91	66	62	58	79	62	69	63	51	52	57	68	68	62	58	1,372	machine/equipment as load
other hazards, harmful substances			58		58		77	71	53	44	50	41	54	62	60	49	52	64	57	54	61	67	66	50	1,148	other hazards, harmful substances
other powered conveying machines			50		60		57	52	56	47	29	49	47	48	37	37	46	49	53	51	47	51	52	49	967	other powered conveying machines
excavating machine			36		39		28	32	28	35	34	20	29	30	31	33	43	32	26	32	44	36	48	44	680	excavating machine
mobile crane			75		71		56	49	57	61	62	57	32	35	42	50	52	48	29	33	37	48	45	42	981	mobile crane
crane			56		70		47	43	43	46	30	32	37	35	41	52	25	29	37	57	40	32	32	41	825	crane
other vehicles			146		152		119	92	94	87	77	89	89	112	81	49	47	45	53	30	30	34	37	39	1,502	other vehicles
elevator, lift			57		62		44	47	56	44	50	33	32	37	33	40	33	30	39	44	46	33	41	39	840	elevator, lift
roof, beam, haze, crossbeam, principal rafter			67		51		53	48	38	36	32	40	53	45	36	38	31	32	30	35	33	25	34	38	795	roof, beam, haze, crossbeam, principal rafter

transmission			7		5		8	7	16	17	12	12	14	11	18	15	20	12	28	23	24	20	28	38	335	transmission
other metal manufacturing machines			45		48		28	41	39	37	36	31	19	28	31	20	21	33	38	36	28	27	36	34	656	other metal manufacturing machines
kiln, caldron			5		13		19	17	11	26	16	17	15	12	18	11	13	12	17	33	25	22	17	30	349	kiln, caldron
natural ground, rock			50		29		49	32	27	28	20	22	23	25	22	23	26	26	26	23	32	28	12	28	551	natural ground, rock
stone, sand, substance			52		43		33	39	39	42	18	29	27	26	26	24	25	22	37	19	31	33	21	27	613	stone, sand, substance
leveling, transporting or loading machine			21		19		24	18	19	21	17	18	20	17	17	17	22	17	14	19	10	13	19	24	366	leveling, transporting or loading machine
circular sawing machine			36		47		48	39	33	44	38	29	35	44	23	28	28	28	29	32	24	33	41	21	680	circular sawing machine
grinding machine, buffing machine			22		22		19	19	17	21	18	21	19	19	9	23	14	15	15	17	16	24	19	21	370	grinding machine, buffing machine
unclassifiable			74		66		67	62	68	60	53	45	47	33	37	39	39	23	36	38	27	22	24	20	880	unclassifiable
scaffolding			23		32		29	28	26	20	21	10	17	17	19	13	15	16	23	25	22	10	13	17	396	scaffolding
power transmission mechanism			26		36		23	20	22	27	19	16	27	23	32	20	19	27	20	20	15	16	18	16	442	power transmission mechanism
slinging tool			24		26		26	29	19	24	17	22	23	18	28	7	21	27	23	23	16	14	19	16	422	slinging tool
roll machine (except printingroll machine)			16		14		19	15	15	15	11	19	9	17	15	12	14	8	23	19	14	12	16	16	299	roll machine (except printingroll machine)
standing tree			12		11		8	12	12	7	11	14	16	11	6	16	20	13	9	11	9	15	12	16	241	standing tree
water			24		22		25	24	28	23	21	26	215	24	28	30	15	23	18	31	30	28	26	15	676	water
inflammable substance			30		18		19	21	25	27	18	25	16	28	21	19	11	8	14	17	12	9	17	15	370	inflammable substance
mixer, grinder			10		10		14	19	13	12	8	9	14	13	19	7	14	4	9	14	12	15	11	15	242	mixer, grinder
human power machine			18		7		16	13	19	12	7	17	10	14	20	15	9	13	14	15	18	14	15	13	279	human power machine

30-39	2,563	2,670	2,792	2,937	3,086	3,121	3,052	3,164	3,163	2,983	2,804	2,775	2,795	2,832	2,660	2,552	2,485	2,315	2,382	2,500	2,281	2,322	2,552	2,314	65,100	30-39
19 years old or less	722	690	751	721	726	617	633	570	532	515	433	373	406	420	434	406	449	409	428	487	455	486	532	455	12,650	19 years old or less
total	15,432	15,301	16,164	16,310	16,621	16,574	17,022	16,987	16,656	16,823	15,688	16,211	16,907	17,218	16,836	17,505	17,150	17,693	18,270	19,744	19,434	20,169	22,408	21,702	420,825	total

Transition of workers' number of workplace of fatal and non-fatal accidents in 08 commerce in Japan (1999-2022)

Workers scale	1999	2000	2001	2002	2003	2004	2005	2006	2007	2008	2009	2010	2011	2012	2013	2014	2015	2016	2017	2018	2019	2020	2021	2022	total	Workers scale
10-29	4,818	4,756	4,969	4,966	4,914	4,931	4,904	4,828	4,724	4,746	4,500	4,664	4,875	5,026	4,907	5,114	5,006	5,194	5,355	5,799	5,697	5,811	6,687	6,435	123,626	10-29
9 workers or less	3,959	3,940	4,057	3,928	4,031	3,905	3,965	3,733	3,588	3,689	3,256	3,393	3,554	3,554	3,333	3,310	3,160	3,372	3,389	3,692	3,487	3,536	3,897	3,662	87,390	9 workers or less
100-299	1,766	1,723	1,859	1,983	2,116	2,093	2,196	2,283	2,347	2,342	2,212	2,317	2,454	2,470	2,401	2,519	2,670	2,764	2,882	3,109	3,150	3,366	3,779	3,636	60,437	100-299
50-99	1,940	1,921	2,049	2,099	2,089	2,103	2,348	2,441	2,364	2,416	2,290	2,425	2,507	2,457	2,603	2,724	2,700	2,666	2,827	3,084	3,118	3,338	3,495	3,522	61,526	50-99
30-49	2,128	2,144	2,300	2,320	2,314	2,368	2,404	2,449	2,420	2,487	2,332	2,335	2,397	2,515	2,501	2,698	2,539	2,583	2,690	2,789	2,809	2,852	3,181	3,087	60,642	30-49
300 workers or more	821	817	930	1,014	1,157	1,174	1,205	1,253	1,213	1,143	1,098	1,077	1,120	1,196	1,091	1,140	1,075	1,114	1,127	1,271	1,173	1,266	1,369	1,360	27,204	300 workers or more
total	15,432	15,301	16,164	16,310	16,621	16,574	17,022	16,987	16,656	16,823	15,688	16,211	16,907	17,218	16,836	17,505	17,150	17,693	18,270	19,744	19,434	20,169	22,408	21,702	420,825	total

Transition of occurred months of fatal and non-fatal accidents in 08 commerce in Japan (1999-2022)

Month	1999	2000	2001	2002	2003	2004	2005	2006	2007	2008	2009	2010	2011	2012	2013	2014	2015	2016	2017	2018	2019	2020	2021	2022	total	Month
January	1,312	1,259	1,668	1,416	1,607	1,569	1,502	1,575	1,395	1,537	1,454	1,388	1,680	1,596	1,723	1,523	1,538	1,749	1,800	2,127	1,708	1,630	2,250	2,209	39,215	January
July	1,359	1,354	1,409	1,478	1,441	1,500	1,462	1,491	1,484	1,471	1,396	1,401	1,460	1,486	1,445	1,458	1,510	1,501	1,581	1,726	1,743	1,859	2,087	1,893	36,995	July
February	1,366	1,326	1,290	1,293	1,301	1,284	1,445	1,435	1,309	1,681	1,317	1,413	1,363	1,673	1,343	1,857	1,340	1,464	1,470	1,653	1,597	1,526	1,767	1,879	35,392	February
September	1,293	1,232	1,249	1,295	1,278	1,390	1,312	1,375	1,245	1,297	1,178	1,268	1,405	1,373	1,286	1,362	1,419	1,422	1,527	1,666	1,555	1,758	1,711	1,852	33,748	September
December	1,262	1,181	1,252	1,301	1,336	1,286	1,603	1,347	1,294	1,276	1,225	1,257	1,420	1,390	1,391	1,576	1,441	1,469	1,552	1,551	1,608	1,774	1,835	1,851	34,478	December
October	1,229	1,302	1,398	1,372	1,332	1,358	1,403	1,387	1,461	1,355	1,329	1,340	1,291	1,355	1,499	1,453	1,330	1,406	1,580	1,695	1,574	1,695	1,736	1,800	34,680	October
March	1,281	1,438	1,356	1,382	1,438	1,430	1,494	1,433	1,468	1,455	1,385	1,458	1,617	1,455	1,353	1,487	1,575	1,503	1,526	1,643	1,677	1,596	1,811	1,749	36,010	March
August	1,204	1,188	1,345	1,380	1,404	1,343	1,328	1,424	1,492	1,353	1,340	1,426	1,452	1,373	1,387	1,425	1,440	1,466	1,495	1,577	1,715	1,716	2,216	1,716	35,205	August
June	1,368	1,250	1,365	1,325	1,385	1,411	1,416	1,407	1,460	1,390	1,312	1,443	1,408	1,424	1,341	1,389	1,450	1,451	1,471	1,574	1,640	1,879	1,848	1,716	35,123	June
May	1,328	1,273	1,361	1,432	1,378	1,372	1,373	1,416	1,436	1,409	1,258	1,299	1,337	1,410	1,345	1,348	1,383	1,478	1,438	1,523	1,587	1,577	1,787	1,701	34,249	May
April	1,314	1,261	1,271	1,352	1,388	1,392	1,386	1,343	1,326	1,359	1,315	1,339	1,236	1,374	1,347	1,322	1,394	1,403	1,462	1,494	1,496	1,550	1,713	1,696	33,533	April
November	1,116	1,237	1,200	1,284	1,333	1,239	1,298	1,354	1,286	1,240	1,179	1,179	1,238	1,309	1,376	1,305	1,330	1,381	1,368	1,515	1,534	1,609	1,647	1,640	32,197	November
total	15,432	15,301	16,164	16,310	16,621	16,574	17,022	16,987	16,656	16,823	15,688	16,211	16,907	17,218	16,836	17,505	17,150	17,693	18,270	19,744	19,434	20,169	22,408	21,702	420,825	total

Transition of prefectures of fatal and non-fatal accidents in 08 commerce in Japan (1999-2022)

Prefecture	1999	2000	2001	2002	2003	2004	2005	2006	2007	2008	2009	2010	2011	2012	2013	2014	2015	2016	2017	2018	2019	2020	2021	2022	total	Prefecture
Tokyo	1,313	1,303	1,404		1,431		1,443	1,499	1,540	1,546	1,385	1,497	1,607	1,637	1,542	1,617	1,578	1,611	1,668	1,863	1,902	1,828	2,204	2,104	35,522	Tokyo
Osaka	1,106	1,100	1,200		1,291		1,245	1,301	1,279	1,268	1,162	1,130	1,137	1,203	1,211	1,242	1,167	1,198	1,268	1,426	1,418	1,380	1,671	1,502	27,905	Osaka
Kanagawa	1,071	974	1,043		1,091		1,094	1,053	1,016	1,035	978	1,038	1,066	1,115	1,040	1,076	1,090	1,083	1,039	1,185	1,168	1,249	1,368	1,313	24,185	Kanagawa
Aichi	897	892	888		857		920	929	873	975	926	937	970	911	862	1,068	886	906	1,040	1,145	1,048	1,145	1,245	1,259	21,579	Aichi
Saitama	578	638	757		819		805	872	841	865	789	837	784	871	857	944	994	955	955	1,035	987	1,079	1,130	1,211	19,603	Saitama
Hokkaido	741	789	878		877		904	900	872	856	806	870	827	861	920	957	930	960	977	1,026	1,005	1,130	1,240	1,138	20,464	Hokkaido
Chiba	650	647	750		797		683	754	741	751	730	678	737	786	710	754	746	789	775	881	921	923	992	1,031	17,226	Chiba
Fukuoka	785	773	777		779		853	808	782	776	786	783	805	882	798	928	948	1,012	937	993	970	998	1,166	1,017	19,356	Fukuoka
Hyogo	643	590	618		687		715	645	670	647	592	681	655	684	649	694	696	724	732	781	758	798	884	848	15,391	Hyogo
Shizuoka	507	540	527		559		500	548	570	499	533	505	543	512	521	530	544	546	566	603	627	602	690	686	12,258	Shizuoka
Hiroshima	416	387	407		400		443	416	435	388	414	387	415	399	411	385	439	408	454	445	428	465	533	511	9,386	Hiroshima
Miyagi	322	299	323		395		416	453	392	442	333	363	529	451	416	438	378	438	376	467	436	413	504	497	9,081	Miyagi
Ibaraki	366	359	361		378		329	391	389	359	313	321	349	358	346	383	379	419	378	415	407	448	483	442	8,373	Ibaraki
Niigata	342	356	349		328		344	331	354	322	284	304	364	378	392	325	343	318	387	449	390	372	497	436	7,965	Niigata
Nagano	213	202	238		259		250	246	254	226	246	247	263	268	278	280	308	274	338	323	342	368	341	385	6,149	Nagano
Gifu	192	208	232		234		265	274	249	221	217	263	224	240	225	239	217	273	293	297	285	322	317	380	5,667	Gifu
Mie	270	255	276		259		269	289	267	280	250	284	284	310	269	273	265	273	323	309	302	357	318	378	6,360	Mie
Kyoto	279	409	328		375		395	350	369	351	326	335	375	363	361	345	339	336	331	363	358	369	397	371	7,825	Kyoto
Gunma	276	244	297		281		292	293	261	263	249	273	274	264	301	313	298	330	315	325	347	376	374	356	6,602	Gunma
Fukushima	274	230	232		248		274	259	257	266	233	233	221	262	272	271	250	253	268	286	276	299	346	341	5,851	Fukushima
Tochigi	257	245	248		239		260	218	231	287	232	242	237	247	234	264	246	262	283	287	309	325	308	311	5,772	Tochigi
Kumamoto	228	271	264		248		241	272	250	247	227	250	282	240	255	254	240	283	275	277	254	281	319	297	5,755	Kumamoto
Kagoshima	188	195	184		218		206	194	187	251	192	204	205	205	232	261	224	258	251	268	280	269	280	295	5,047	Kagoshima
Okayama	200	210	225		240		289	258	261	271	228	244	242	266	263	228	265	234	285	287	261	298	293	294	5,642	Okayama
Aomori	204	160	201		178		186	209	204	195	200	177	181	200	203	202	163	198	230	211	203	213	237	288	4,443	Aomori
Nagasaki	172	162	159		200		174	181	176	179	191	204	172	188	189	212	187	211	232	207	229	253	246	251	4,375	Nagasaki

Yamaguchi	224	200	206		217		252	236	199	223	211	227	223	228	192	181	196	195	228	234	209	240	273	233	4,827	Yamaguchi
Nara	155	138	136		180		213	172	182	231	234	225	213	195	211	197	203	215	213	235	208	228	260	232	4,476	Nara
Miyazaki	163	175	166		176		164	172	168	173	155	137	165	138	155	155	179	177	184	170	221	215	209	221	3,838	Miyazaki
Ehime	150	183	175		198		193	182	176	182	142	148	181	189	189	175	185	183	189	233	182	211	269	216	4,131	Ehime
Iwate	140	158	182		165		166	152	139	167	151	145	254	185	199	172	154	181	181	173	191	190	190	214	3,849	Iwate
Ishikawa	167	150	166		138		156	155	171	131	161	147	168	150	149	160	139	147	156	190	195	169	219	213	3,597	Ishikawa
Akita	146	174	142		122		153	151	163	157	139	167	176	186	160	156	149	175	146	199	194	196	192	207	3,650	Akita
Kagawa	170	188	175		169		188	174	163	160	164	190	151	202	161	151	167	155	187	169	195	191	212	203	3,885	Kagawa
Shiga	132	138	131		138		169	184	166	175	163	169	168	194	170	147	176	187	199	195	200	204	202	191	3,798	Shiga
Yamagata	156	171	168		132		163	152	144	159	150	141	151	156	186	168	156	167	184	210	178	184	232	190	3,698	Yamagata
Okinawa	99	105	139		117		121	141	133	142	127	126	155	167	158	135	146	190	166	182	207	200	246	190	3,392	Okinawa
Saga	153	115	101		118		117	126	130	126	116	121	107	124	124	150	156	141	133	215	161	180	195	183	3,092	Saga
Oita	173	125	148		155		178	142	173	162	148	159	136	140	171	173	190	181	168	162	199	187	200	182	3,652	Oita
Toyama	149	133	164		126		185	161	136	127	137	134	174	167	155	180	171	163	210	177	160	166	200	182	3,557	Toyama
Wakayama	124	129	140		147		168	145	142	156	136	123	135	114	117	139	108	109	110	151	169	143	179	166	3,050	Wakayama
Fukui	119	104	113		98		100	112	113	99	99	119	121	113	108	112	93	109	109	161	129	143	145	157	2,576	Fukui
Tokushima	109	83	124		93		120	92	93	95	82	84	80	94	88	91	83	87	112	96	102	131	125	129	2,193	Tokushima
Yamanashi	66	54	78		99		115	97	102	105	93	92	92	80	95	107	104	112	107	119	118	108	147	128	2,218	Yamanashi
Shimane	108	101	97		113		88	88	76	100	84	77	83	100	117	77	93	87	110	116	111	95	127	120	2,168	Shimane
Kochi	165	158	160		167		132	134	93	109	111	123	138	130	104	121	110	117	120	112	120	144	127	117	2,812	Kochi
Tottori	74	81	87		85		86	76	74	78	63	70	88	65	70	75	72	63	82	91	74	84	76	86	1,700	Tottori
total	15,432	15,301	16,164	16,310	16,621	16,574	17,022	16,987	16,656	16,823	15,688	16,211	16,907	17,218	16,836	17,505	17,150	17,693	18,270	19,744	19,434	20,169	22,408	21,702	420,825	total

Data Source : <https://anzeninfo.mhlw.go.jp/user/anzen/tok/anst00.html> MHLW, Jaan

Return to https://www.jisha.or.jp/english/statistics/202312_05.html