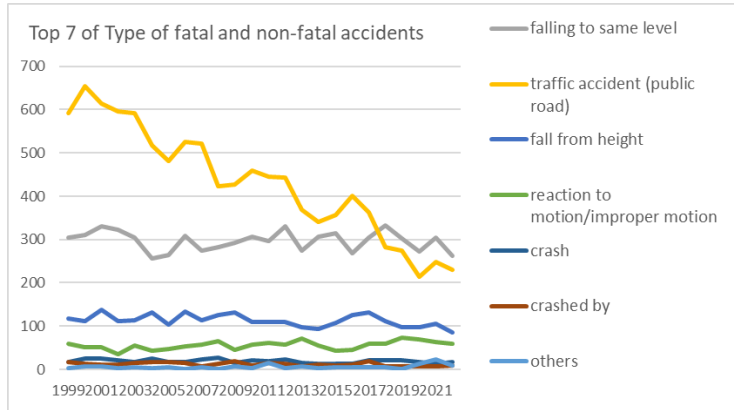
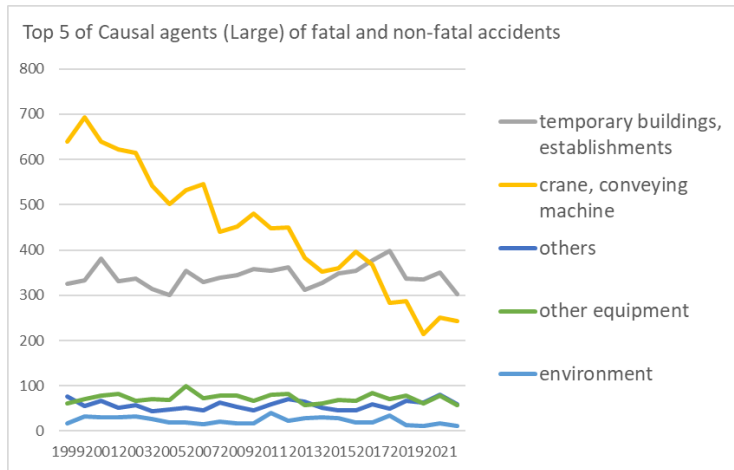


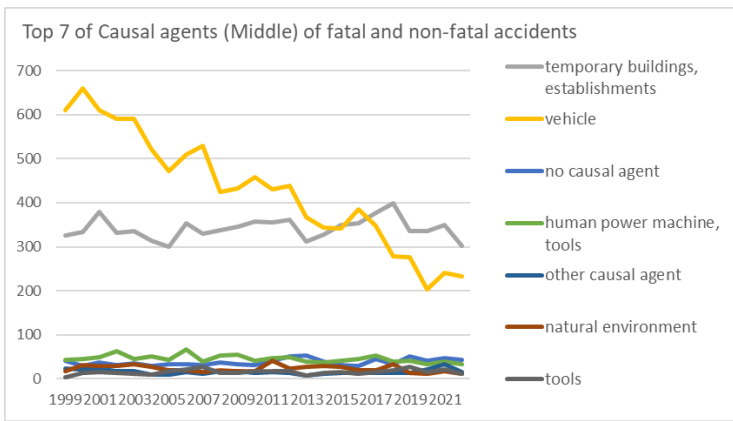
Transition of fatal and non-fatal accidents in 090103 insurance business in Japan (1999-2022)



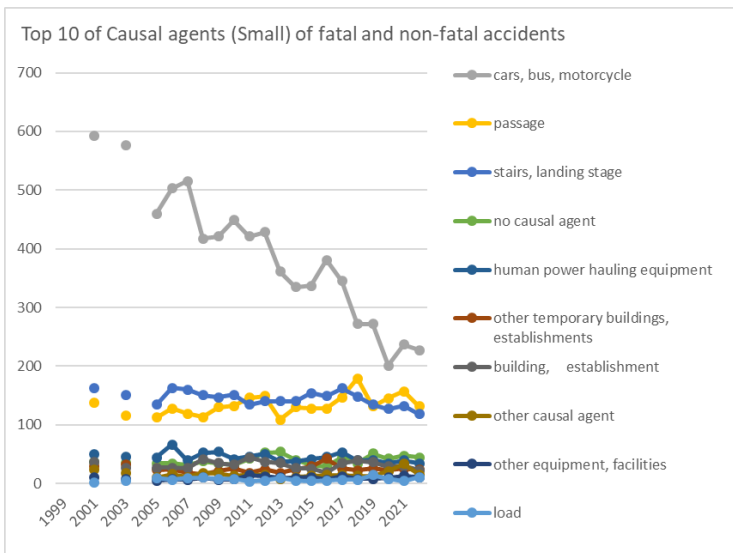
Transition of Top 7 of Type of fatal and non-fatal accidents in 090103 insurance business in Japan (1999-2022)



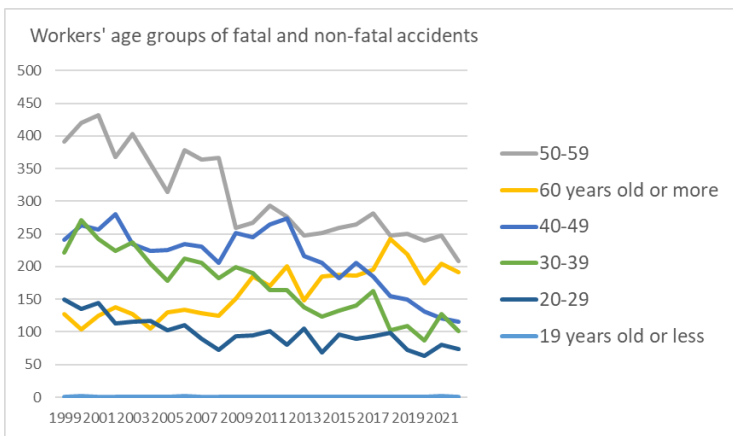
Transition of Top 5 of Causal agents (Large) of fatal and non-fatal accidents in 090103 insurance business in Japan (1999-2022)



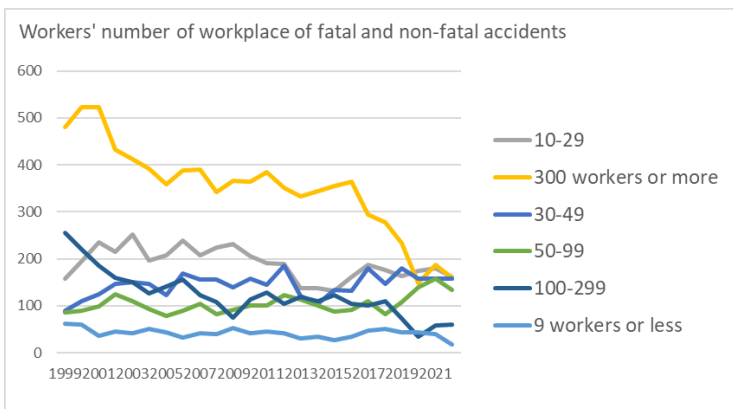
Transition of Top 7 of Causal agents (Middle) of fatal and non-fatal accidents in 090103 insurance business in Japan (1999-2022)



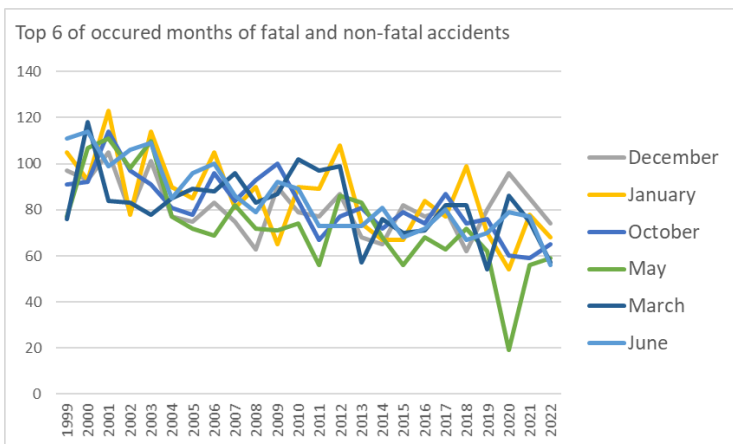
Transition of Top 10 of Causal agents (Small) of fatal and non-fatal accidents in 090103 insurance business in Japan (1999-2022)



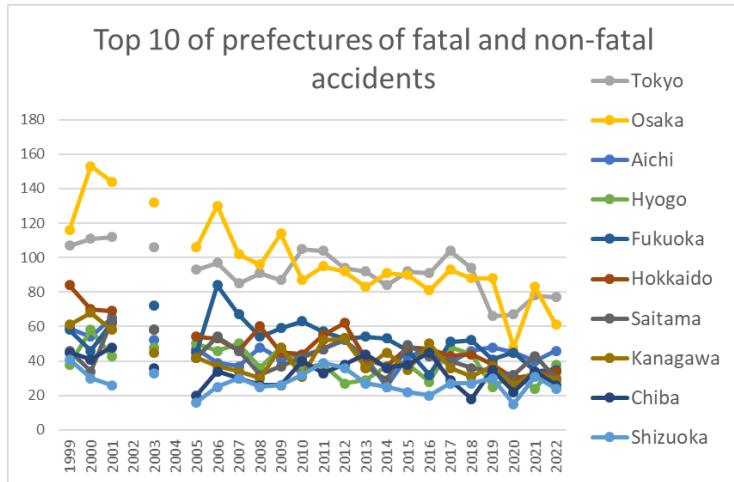
Transition of workers' age groups of fatal and non-fatal accidents in 090103 insurance business in Japan (1999-2022)



Transition of workers' number of workplace of fatal and non-fatal accidents in 090103 insurance business in Japan (1999-2022)



Transition of Top 6 of occurred months of fatal and non-fatal accidents in 090103 insurance business in Japan (1999-2022)



Transition of Top 10 of prefectures of fatal and non-fatal accidents in 090103 insurance business in Japan (1999-2022)

Transition of Type of fatal and non-fatal accidents in 090103 insurance business in Japan (1999-2022)

Type of accidents	1999	2000	2001	2002	2003	2004	2005	2006	2007	2008	2009	2010	2011	2012	2013	2014	2015	2016	2017	2018	2019	2020	2021	2022	total	Type of accidents
falling to same level	305	310	330	322	304	256	265	309	274	283	292	307	297	331	274	306	314	269	304	333	302	273	305	262	7,127	falling to same level
traffic accident (public road)	592	654	615	595	592	517	482	525	522	424	427	460	445	444	368	341	357	401	363	283	275	215	249	231	10,377	traffic accident (public road)
fall from height	117	111	138	112	113	131	104	134	113	125	131	110	109	109	97	94	108	125	131	112	98	97	106	85	2,710	fall from height
reaction to motion/improper motion	59	51	51	35	56	44	48	53	57	66	45	58	62	58	71	56	44	46	60	59	74	70	64	60	1,347	reaction to motion/improper motion
crash	17	26	26	22	18	26	17	17	24	27	16	21	19	24	15	14	14	14	21	22	22	17	14	17	470	crash
crashed by	18	13	12	12	16	17	18	15	8	14	20	9	15	14	6	12	10	11	19	7	8	6	8	9	297	crashed by
others	2	7	6	3	4	3	5	1	5	1	8	3	16	3	6	3	5	4	5	5	1	13	23	9	141	others

Causal (L) agents	1999	2000	2001	2002	2003	2004	2005	2006	2007	2008	2009	2010	2011	2012	2013	2014	2015	2016	2017	2018	2019	2020	2021	2022	total	agents
temporary buildings, establishments	326	333	380	332	336	314	300	354	329	338	345	357	355	361	312	327	349	354	377	398	336	335	350	302	8,200	temporary buildings, establishments
crane, conveying machine	639	693	640	623	615	541	502	532	546	441	451	481	448	449	382	353	360	396	368	283	287	215	250	244	10,739	crane, conveying machine
others	76	55	66	51	58	44	47	52	45	63	53	46	59	71	64	52	46	45	60	50	66	63	80	60	1,372	others
other equipment	61	71	79	82	67	71	69	100	72	79	79	67	80	82	57	62	69	66	85	71	78	61	78	58	1,744	other equipment
environment	18	32	30	30	33	27	19	19	16	20	17	18	41	23	28	30	28	19	19	34	14	12	17	12	556	environment
load	7	7	2	3	6	7	10	6	9	11	8	11	6	5	9	5	4	5	6	6	14	9	4	11	171	load
substance, material	2	2	4	2	2	2	3	7	2		1	2	4	4	2	4	1	1	3	3	2	1	3	4	61	substance, material
machine	2	2	1			1	2	1	2						1						3	1			16	machine
total	1,131	1,195	1,202	1,123	1,117	1,007	952	1,071	1,021	952	954	982	993	995	855	833	857	886	918	845	800	697	782	691	22,859	total

Transition of Causal agents (Middle) of fatal and non-fatal accidents in 090103 insurance business in Japan (1999-2022)

Causal (M) agents	1999	2000	2001	2002	2003	2004	2005	2006	2007	2008	2009	2010	2011	2012	2013	2014	2015	2016	2017	2018	2019	2020	2021	2022	total	Causal (M) agents
temporary buildings, establishments	326	333	380	332	336	314	300	354	329	338	345	357	355	361	312	327	349	354	377	398	336	335	350	302	8,200	temporary buildings, establishments
vehicle	610	660	611	590	590	522	472	510	529	424	433	458	430	438	367	344	341	385	348	278	276	203	240	232	10,291	vehicle
no causal agent	42	29	37	32	35	30	34	34	31	38	34	31	42	52	54	40	32	29	45	34	51	42	47	44	919	no causal

																											agent
human power machine, tools	44	46	50	64	46	51	44	67	39	53	55	41	47	50	39	37	41	45	53	39	41	34	39	34	1,099	human power machine, tools	
other causal agent	23	21	24	18	18	10	10	16	11	18	17	13	15	14	7	11	13	14	14	13	13	21	33	15	382	other causal agent	
natural environment	18	32	30	30	33	27	19	19	16	20	17	18	41	23	28	30	28	19	19	34	14	12	17	12	556	natural environment	
tools	4	13	15	13	11	9	18	21	27	14	14	18	17	17	7	14	15	12	16	20	27	15	22	12	371	tools	
other equipments, facilities	9	7	10	4	7	8	5	7	6	10	6	7	14	12	10	9	11	6	12	8	8	10	13	11	210	other equipments, facilities	
load	7	7	2	3	6	7	10	6	9	11	8	11	6	5	9	5	4	5	6	6	14	9	4	11	171	load	
conveying machine	28	33	25	33	24	19	27	22	16	16	17	19	16	11	14	9	19	9	19	5	11	11	9	10	422	conveying machine	
materials	2	2	2	2	2	2	3	5	2		1	2	4	4	2	2	1	1	3	3	2	1	2	4	54	materials	
crane	1		4		1		3		1	1	1	4	2		1			2	1			1	1	2	26	crane	
unclassifiable	11	5	5	1	5	4	3	2	3	7	2	2	2	5	3	1	1	2	1	3	2			1	71	unclassifiable	
electric equipment	4	5	4	1	3	3	2	5		2	3	1	2	3	1	2	2	3	4	4	2	1	4	1	62	electric equipment	
general machine	2	2	1			1	2	1	1						1						2	1			14	general machine	
hazards, harmful substances			2							2														1		7	hazards, harmful substances
construction machine																								1		1	construction machine

metal manufacturing machine									1															1	metal manufacturing machine	
pressure vessel										1														1	pressure vessel	
welding equipment																					1			1	welding equipment	
engine																									engine	
power transmission mechanism																									power transmission mechanism	
woodworking machine																									woodworking machine	
mobile silviculture machine																									mobile silviculture machine	
chemical facilities																									chemical facilities	
kiln, caldron																									kiln, caldron	
total	1,131	1,195	1,202	1,123	1,117	1,007	952	1,071	1,021	952	954	982	993	995	855	833	857	886	918	845	800	697	782	691	22,859	total

Transition of Causal agents (Small) of fatal and non-fatal accidents in 090103 insurance business in Japan (1999-2022)

Causal (S) agents	1999	2000	2001	2002	2003	2004	2005	2006	2007	2008	2009	2010	2011	2012	2013	2014	2015	2016	2017	2018	2019	2020	2021	2022	total	Causal (S) agents
cars, bus, motorcycle			593		576		460	503	515	417	421	449	421	428	361	335	337	381	345	272	272	201	237	227	7,751	cars, bus, motorcycle
passage			137		115		112	128	119	113	130	132	146	149	109	130	128	128	147	179	131	145	157	131	2,666	passage
stairs, landing stage			163		150		134	163	160	150	147	151	134	140	140	140	154	149	162	148	134	127	132	118	2,896	stairs, landing stage

no causal agent			37		35		34	34	31	38	34	31	42	52	54	40	32	29	45	34	51	42	47	44	786	no causal agent
human power hauling equipment			50		45		44	66	39	52	54	41	46	50	38	37	41	45	53	39	40	34	39	34	887	human power hauling equipment
other temporary buildings, establishments			30		32		23	24	19	16	21	26	18	24	18	24	29	42	25	22	25	22	25	23	488	other temporary buildings, establishments
building, establishment			36		27		27	27	26	41	35	32	44	37	35	26	25	19	35	39	36	29	30	22	628	building, establishment
other causal agent			24		18		10	16	11	18	17	13	15	14	7	11	13	14	14	13	13	21	33	15	310	other causal agent
other equipment, facilities			10		7		5	7	6	10	6	7	14	12	10	9	11	6	12	8	8	10	13	11	182	other equipment, facilities
load			2		5		9	6	9	10	8	8	3	5	9	5	4	5	6	6	14	8	4	11	137	load
other environments			24		28		16	15	12	15	10	17	16	23	24	27	20	19	16	28	10	12	14	9	355	other environments
truck			24		24		27	21	16	16	16	18	16	9	14	8	19	9	19	4	11	11	9	9	300	truck
other tools			9		9		11	18	20	11	9	15	9	11	5	10	8	7	11	11	17	9	14	9	223	other tools
working platform, boot board			14		10		3	11	5	17	12	16	10	11	8	7	13	15	7	10	9	11	6	7	202	working platform, boot board
other vehicles			18		14		10	7	13	6	11	9	8	9	4	8	4	4	3	4	3	2	3	5	145	other vehicles
ladder			6		2		7	3	7	3	5	3	7	6	2	4	7	5	5	9	10	6	8	3	108	ladder
high/cold temperature environment			4		1		1			1		1	3		2	1	1		2	5			1	2	25	high/cold temperature environment
other materials								2	1			1	1	2		1	1	1	1	2		1	1	2	17	other materials
unclassifiable			5		5		3	2	3	7	2	2	2	5	3	1	1	2	1	3	2			1	50	unclassifiable
transmission			3		2		2	3		2	2		2	3	1	2	2	3	3	4	2	1	4	1	42	transmission

equipment																										equipment	
other welding equipment																											other welding equipment
kiln, caldron																											kiln, caldron
industrial dryer																											industrial dryer
other kiln, caldron																											other kiln, caldron
timbering																											timbering
explosive substance																											explosive substance
inflammable gas																											inflammable gas
radiation																											radiation
total	1,131	1,195	1,202	1,123	1,117	1,007	952	1,071	1,021	952	954	982	993	995	855	833	857	886	918	845	800	697	782	691	22,859	total	

Transition of workers' age groups of fatal and non-fatal accidents in 090103 insurance business in Japan (1999-2022)

Age	1999	2000	2001	2002	2003	2004	2005	2006	2007	2008	2009	2010	2011	2012	2013	2014	2015	2016	2017	2018	2019	2020	2021	2022	total	Age
50-59	391	420	432	368	403	357	314	378	364	366	259	267	293	276	247	251	260	264	281	247	250	240	247	209	7,384	50-59
60 years old or more	127	104	125	138	127	105	130	134	129	125	151	185	171	200	148	185	187	186	195	242	219	175	205	191	3,884	60 years old or more
40-49	241	263	257	280	234	224	226	234	231	206	251	245	264	274	216	206	182	206	185	155	149	131	121	116	5,097	40-49
30-39	221	271	242	224	237	204	178	212	206	182	199	190	164	164	138	123	132	141	163	103	109	87	127	101	4,118	30-39
20-29	150	135	145	113	116	117	103	111	90	72	93	95	101	81	105	68	96	89	94	98	73	64	80	74	2,363	20-29
19 years old or less	1	2	1				1	2	1	1	1				1								2		13	19 years old or less
total	1,131	1,195	1,202	1,123	1,117	1,007	952	1,071	1,021	952	954	982	993	995	855	833	857	886	918	845	800	697	782	691	22,859	total

Transition of workers' number of workplace of fatal and non-fatal accidents in 090103 insurance business in Japan (1999-2022)

Workers scale	1999	2000	2001	2002	2003	2004	2005	2006	2007	2008	2009	2010	2011	2012	2013	2014	2015	2016	2017	2018	2019	2020	2021	2022	total	Workers scale
---------------	------	------	------	------	------	------	------	------	------	------	------	------	------	------	------	------	------	------	------	------	------	------	------	------	-------	---------------

10-29	158	194	235	215	252	196	207	238	207	224	231	206	190	189	138	138	132	161	188	177	163	174	179	162	4,554	10-29
300 workers or more	481	522	522	433	412	392	358	388	391	342	366	364	384	352	333	344	355	364	295	278	233	148	188	160	8,405	300 workers or more
30-49	90	109	125	146	150	147	123	168	155	156	139	158	145	185	121	105	134	131	179	147	179	157	158	157	3,464	30-49
50-99	86	89	99	124	110	94	79	89	104	83	92	100	100	123	114	101	88	91	109	82	108	140	158	134	2,497	50-99
100-299	255	221	185	159	151	127	142	155	123	107	74	113	129	105	119	110	122	104	100	110	73	34	59	60	2,937	100-299
9 workers or less	61	60	36	46	42	51	43	33	41	40	52	41	45	41	30	35	26	35	47	51	44	44	40	18	1,002	9 workers or less
total	1,131	1,195	1,202	1,123	1,117	1,007	952	1,071	1,021	952	954	982	993	995	855	833	857	886	918	845	800	697	782	691	22,859	total

Transition of occurred months of fatal and non-fatal accidents in 090103 insurance business in Japan (1999-2022)

Month	1999	2000	2001	2002	2003	2004	2005	2006	2007	2008	2009	2010	2011	2012	2013	2014	2015	2016	2017	2018	2019	2020	2021	2022	total	Month
December	97	93	105	79	101	77	75	83	75	63	90	79	77	87	68	65	82	77	80	62	80	96	85	74	1,950	December
January	105	93	123	78	114	90	85	105	81	90	65	90	89	108	74	67	67	84	77	99	70	54	78	68	2,054	January
October	91	92	114	97	91	81	78	96	84	93	100	84	67	77	81	72	79	74	87	74	76	60	59	65	1,972	October
May	77	107	111	98	110	77	72	69	82	72	71	74	56	86	83	68	56	68	63	72	62	19	56	59	1,768	May
March	76	118	84	83	78	85	89	88	96	83	87	102	97	99	57	76	70	71	82	82	54	86	75	57	1,975	March
June	111	114	99	106	109	85	96	100	86	79	92	89	73	73	73	81	68	72	80	67	70	79	77	56	2,035	June
April	85	96	104	97	94	82	78	97	76	92	82	95	86	75	72	70	69	70	77	52	64	26	64	56	1,859	April
August	103	86	85	89	66	82	68	76	73	55	69	58	81	61	59	59	66	72	72	64	62	37	52	56	1,651	August
July	93	106	84	113	93	85	77	100	82	90	83	101	102	95	72	58	67	82	56	59	82	67	63	55	1,965	July
November	93	93	101	104	90	74	79	81	111	76	70	64	88	85	69	62	75	88	80	64	48	56	66	51	1,868	November
September	106	97	103	90	89	97	64	80	86	62	74	69	84	62	81	64	76	65	83	62	65	66	53	51	1,829	September
February	94	100	89	89	82	92	91	96	89	97	71	77	93	87	66	91	82	63	81	88	67	51	54	43	1,933	February
total	1,131	1,195	1,202	1,123	1,117	1,007	952	1,071	1,021	952	954	982	993	995	855	833	857	886	918	845	800	697	782	691	22,859	total

Toyama	8	15	5		7		4	6	5	5	11	5	7	12	6	6	6	9	8	9	7	5	2	1	149	Toyama
Okinawa	2	2			5		3	7	4	6	5	3	5	12	7	9	4	1	9	8	1	3	9	1	106	Okinawa
total	1,131	1,195	1,202	1,123	1,117	1,007	952	1,071	1,021	952	954	982	993	995	855	833	857	886	918	845	800	697	782	691	22,859	total

Data Source : <https://anzeninfo.mhlw.go.jp/user/anzen/tok/anst00.html> MHLW, Jaan

Return to https://www.jisha.or.jp/english/statistics/202312_05.html