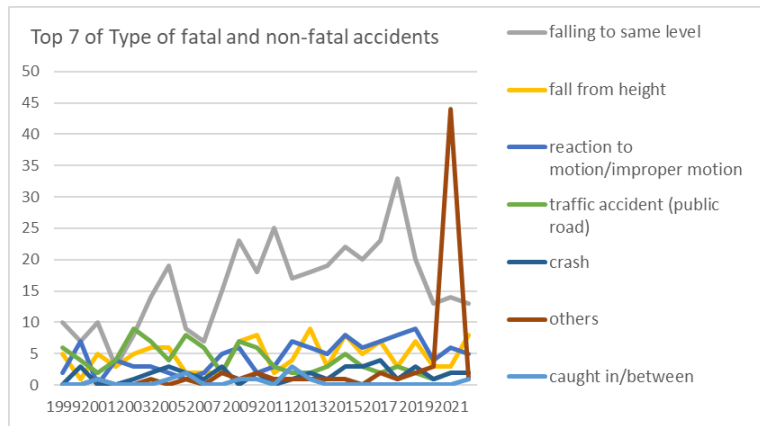
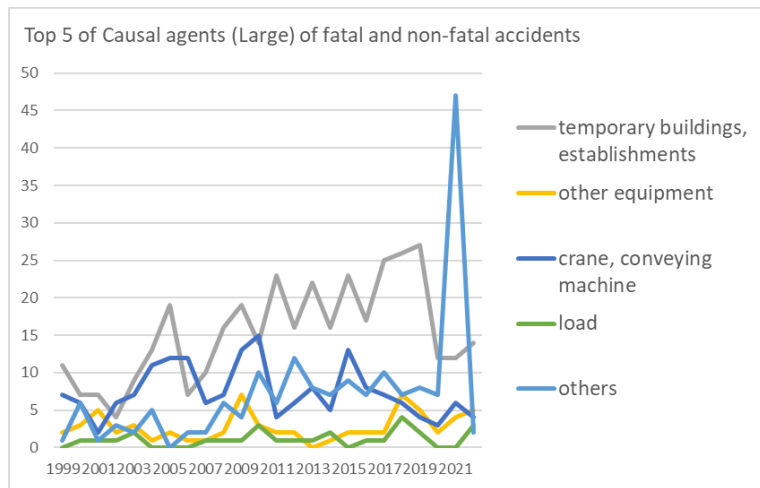


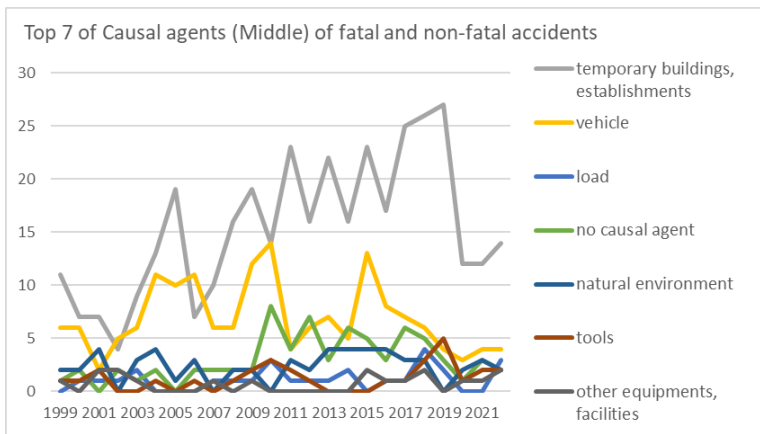
Transition of fatal and non-fatal accidents in 090201 traveling service in Japan (1999-2022)



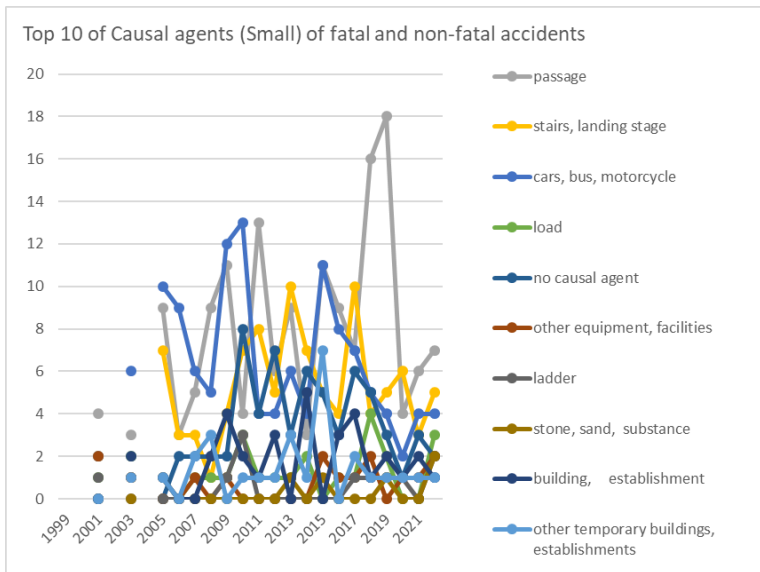
Transition of Top 7 of Type of fatal and non-fatal accidents in 090201 traveling service in Japan (1999-2022)



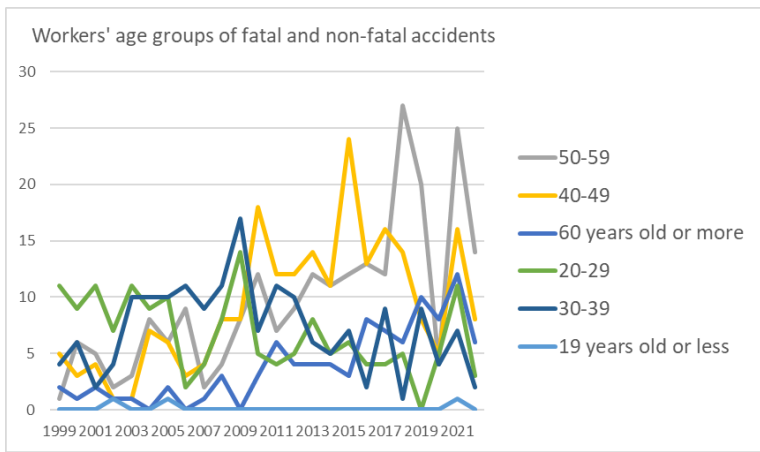
Transition of Top 5 of Causal agents (Large) of fatal and non-fatal accidents in 090201 traveling service in Japan (1999-2022)



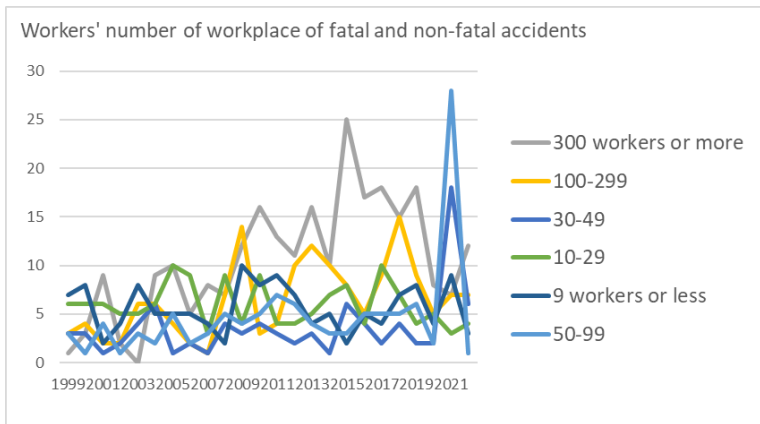
Transition of Top 7 of Causal agents (Middle) of fatal and non-fatal accidents in 090201 traveling service in Japan (1999-2022)



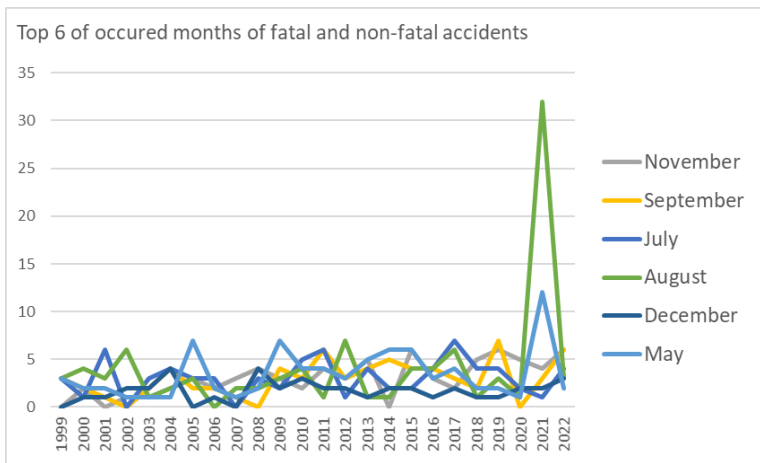
Transition of Top 10 of Causal agents (Small) of fatal and non-fatal accidents in 090201 traveling service in Japan (1999-2022)



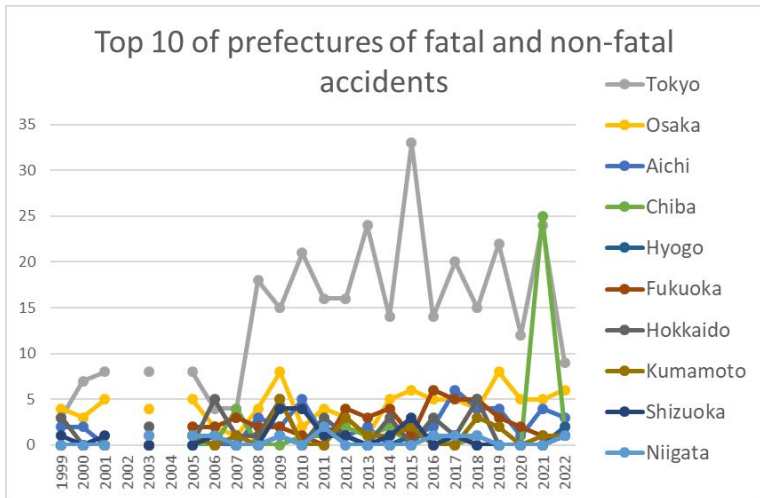
Transition of workers' age groups of fatal and non-fatal accidents in 090201 traveling service in Japan (1999-2022)



Transition of workers' number of workplace of fatal and non-fatal accidents in 090201 traveling service in Japan (1999-2022)



Transition of Top 6 of occurred months of fatal and non-fatal accidents in 090201 traveling service in Japan (1999-2022)



Transition of Top 10 of prefectures of fatal and non-fatal accidents in 090201 traveling service in Japan (1999-2022)

Transition of Type of fatal and non-fatal accidents in 090201 traveling service in Japan (1999-2022)

Type of accidents	1999	2000	2001	2002	2003	2004	2005	2006	2007	2008	2009	2010	2011	2012	2013	2014	2015	2016	2017	2018	2019	2020	2021	2022	total	Type of accidents
falling to same level	10	7	10	3	8	14	19	9	7	15	23	18	25	17	18	19	22	20	23	33	20	13	14	13	380	falling to same level
fall from height	5	1	5	3	5	6	6	2	2	2	7	8	2	4	9	3	8	5	7	3	7	3	3	8	114	fall from height

reaction to motion/improper motion	2	7		4	3	3	2	1	2	5	6	2	3	7	6	5	8	6	7	8	9	4	6	5	111	reaction to motion/improper motion
traffic accident (public road)	6	4	2	4	9	7	4	8	6	2	7	6	3	2	2	3	5	3	2	3	2	1	2	2	95	traffic accident (public road)
crash		3			1	2	3	2	1	3		2		1	2	1	3	3	4	1	3	1	2	2	40	crash
others			1			1		1		2	1	2	1	1	1	1	1		2	1	2	3	44	1	66	others
caught in/between			1				1	2			1	1		3	1									1	11	caught in/between
collapse										1			1						1					1	4	collapse
crashed by				2		1			2	3	1	3	1	1	2	1	3	2	1	1	2	1	1		28	crashed by
struck by flying or falling object		2	3									2	1			1			1	2					12	struck by flying or falling object
cut			1										2	1	1	1					1				7	cut
contact to high/low-temperature			1									1		1	1	1	1				1				7	contact to high/low-temperature
unclassifiable		1								1				2						1					5	unclassifiable
traffic accident (others)												1	1		1										3	traffic accident (others)
contact to harmful substance																	1	1							2	contact to harmful substance
injury to the sole of the foot																										injury to the sole of the foot

drown																											drown
electric shock																											electric shock
explosion																											explosion
burst																											burst
fire																											fire
total	23	25	24	16	26	34	35	25	20	34	47	45	40	40	44	36	52	40	48	53	47	26	72	33	885	total	

Transition of Causal agents (Large) of fatal and non-fatal accidents in 090201 traveling service in Japan (1999-2022)

Causal (L) agents	1999	2000	2001	2002	2003	2004	2005	2006	2007	2008	2009	2010	2011	2012	2013	2014	2015	2016	2017	2018	2019	2020	2021	2022	total	Causal (L) agents
temporary buildings, establishments	11	7	7	4	9	13	19	7	10	16	19	14	23	16	22	16	23	17	25	26	27	12	12	14	369	temporary buildings, establishments
other equipment	2	3	5	2	3	1	2	1	1	2	7	3	2	2		1	2	2	2	7	5	2	4	5	66	other equipment
crane, conveying machine	7	6	2	6	7	11	12	12	6	7	13	15	4	6	8	5	13	8	7	6	4	3	6	4	178	crane, conveying machine
load		1	1	1	2				1	1	1	3	1	1	1	2		1	1	4	2			3	27	load
others	1	6	1	3	2	5		2	2	6	4	10	6	12	8	7	9	7	10	7	8	7	47	2	172	others
environment	2	2	4		3	4	1	3		2	2		3	2	4	4	4	4	3	3		2	3	2	57	environment
substance, material			2				1				1		1	1	1	1	1				1			2	13	substance, material
machine			2																					1	3	machine
total	23	25	24	16	26	34	35	25	20	34	47	45	40	40	44	36	52	40	48	53	47	26	72	33	885	total

welding equipment																																															welding equipment							
kiln, caldron																																																						kiln, caldron
total	23	25	24	16	26	34	35	25	20	34	47	45	40	40	44	36	52	40	48	53	47	26	72	33	885	total																												

Transition of Causal agents (Small) of fatal and non-fatal accidents in 090201 traveling service in Japan (1999-2022)

Causal (S) agents	1999	2000	2001	2002	2003	2004	2005	2006	2007	2008	2009	2010	2011	2012	2013	2014	2015	2016	2017	2018	2019	2020	2021	2022	total	Causal (S) agents
passage			4		3		9	3	5	9	11	4	13	6	9	3	11	9	7	16	18	4	6	7	157	passage
stairs, landing stage			2		1		7	3	3	1	4	7	8	5	10	7	5	4	10	4	5	6	3	5	100	stairs, landing stage
cars, bus, motorcycle			2		6		10	9	6	5	12	13	4	4	6	4	11	8	7	5	4	2	4	4	126	cars, bus, motorcycle
load			1		2				1	1	1	3	1	1	1	2		1	1	4	2			3	25	load
no causal agent					1			2	2	2	2	8	4	7	3	6	5	3	6	5	3	1	3	2	65	no causal agent
other equipment, facilities			2		1				1		1						2	1	1	2		1	1	2	15	other equipment, facilities
ladder			1							1	3								1	1	1	1		2	11	ladder
stone, sand, substance							1								1		1							2	6	stone, sand, substance
building, establishment					2		1			2	4	2	1	3		5		3	4	1	2	1	2	1	34	building, establishment
other temporary buildings, establishments					1		1		2	3		1	1	1	3	1	7		2	1	1	1	1	1	28	other temporary buildings, establishments
other environments			1		1		1	1		2	1		2	1	2		2	3	2	3		1		1	24	other environments

as load																												as load
total	23	25	24	16	26	34	35	25	20	34	47	45	40	40	44	36	52	40	48	53	47	26	72	33	885	total		

Transition of workers' age groups of fatal and non-fatal accidents in 090201 traveling service in Japan (1999-2022)

Age	1999	2000	2001	2002	2003	2004	2005	2006	2007	2008	2009	2010	2011	2012	2013	2014	2015	2016	2017	2018	2019	2020	2021	2022	total	Age
50-59	1	6	5	2	3	8	6	9	2	4	8	12	7	9	12	11	12	13	12	27	20	4	25	14	232	50-59
40-49	5	3	4	1	1	7	6	3	4	8	8	18	12	12	14	11	24	13	16	14	8	5	16	8	221	40-49
60 years old or more	2	1	2	1	1		2		1	3		3	6	4	4	4	3	8	7	6	10	8	12	6	94	60 years old or more
20-29	11	9	11	7	11	9	10	2	4	8	14	5	4	5	8	5	6	4	4	5		5	11	3	161	20-29
30-39	4	6	2	4	10	10	10	11	9	11	17	7	11	10	6	5	7	2	9	1	9	4	7	2	174	30-39
19 years old or less				1			1																1		3	19 years old or less
total	23	25	24	16	26	34	35	25	20	34	47	45	40	40	44	36	52	40	48	53	47	26	72	33	885	total

Transition of workers' number of workplace of fatal and non-fatal accidents in 090201 traveling service in Japan (1999-2022)

Workers scale	1999	2000	2001	2002	2003	2004	2005	2006	2007	2008	2009	2010	2011	2012	2013	2014	2015	2016	2017	2018	2019	2020	2021	2022	total	Workers scale
300 workers or more	1	3	9	2		9	10	5	8	7	12	16	13	11	16	10	25	17	18	15	18	8	7	12	252	300 workers or more
100-299	3	4	2	2	6	6	4	2	1	7	14	3	4	10	12	10	8	5	9	15	9	5	7	7	155	100-299
30-49	3	3	1	2	4	6	1	2	1	4	3	4	3	2	3	1	6	4	2	4	2	2	18	6	87	30-49
10-29	6	6	6	5	5	6	10	9	3	9	4	9	4	4	5	7	8	4	10	7	4	5	3	4	143	10-29
9 workers or less	7	8	2	4	8	5	5	5	4	2	10	8	9	7	4	5	2	5	4	7	8	4	9	3	135	9 workers or less
50-99	3	1	4	1	3	2	5	2	3	5	4	5	7	6	4	3	3	5	5	5	6	2	28	1	113	50-99
total	23	25	24	16	26	34	35	25	20	34	47	45	40	40	44	36	52	40	48	53	47	26	72	33	885	total

Transition of occurred months of fatal and non-fatal accidents in 090201 traveling service in Japan (1999-2022)

Month	1999	2000	2001	2002	2003	2004	2005	2006	2007	2008	2009	2010	2011	2012	2013	2014	2015	2016	2017	2018	2019	2020	2021	2022	total	Month
November		2		1	1	2	3	2	3	4	3	2	4	3	5		6	3	2	5	6	5	4	6	72	November
September	3	2	1		2	4	2	2	1		4	3	6	3	4	5	4	4	3	2	7		3	6	71	September
July	3	1	6		3	4	3	3		3	2	5	6	1	4	2	2	4	7	4	4	2	1	4	74	July
August	3	4	3	6	1	2	3		2	2	3	4	1	7	1	1	4	4	6	1	3	1	32	3	97	August
December		1	1	2	2	4		1		4	2	3	2	2	1	2	2	1	2	1	1	2	2	3	41	December
May	3	2	2	1	1	1	7	2	1	2	7	4	4	3	5	6	6	3	4	2	2	1	12	2	83	May
February	3	1	2		2	5	1	4	2	4	4	2	7	4	6	4	6	4	2	3	3	4	1	2	76	February
October	2	4	1	2	1	2	3	2	3	2	5	2	1	6	4	2	5	3	6	4	3	4	3	2	72	October
April		1			1	5	1	2		2	6	7		1	4	3	2	1	2	7	5		3	2	55	April
January	2	2	2	1	5	3	2		3	6	4	3	4	3	3	4	7	4	5	10	5	3	2	1	84	January
March	2	2	3	3	4		6	2	3	4	3	3	3	3	6	2	6	4	4	6	7	2	1	1	80	March
June	2	3	3		3	2	4	5	2	1	4	7	2	4	1	5	2	5	5	8	1	2	8	1	80	June
total	23	25	24	16	26	34	35	25	20	34	47	45	40	40	44	36	52	40	48	53	47	26	72	33	885	total

Transition of prefectures of fatal and non-fatal accidents in 090201 traveling service in Japan (1999-2022)

Prefecture	1999	2000	2001	2002	2003	2004	2005	2006	2007	2008	2009	2010	2011	2012	2013	2014	2015	2016	2017	2018	2019	2020	2021	2022	total	Prefecture
Tokyo	3	7	8		8		8	4	4	18	15	21	16	16	24	14	33	14	20	15	22	12	24	9	315	Tokyo
Osaka	4	3	5		4		5	2	1	4	8	2	4	3	1	5	6	5	5	4	8	5	5	6	95	Osaka
Aichi	2	2					1			3	2	5	1	1	2		1	2	6	4	4	1	4	3	44	Aichi
Chiba					1				4			1	1	2	1	2		1		1			25	2	41	Chiba
Hyogo							1	1			1		2	1			1	1	1					2	11	Hyogo

Fukuoka						2	2	3	2	2	1		4	3	4	1	6	5	5	3	2	1	1	47	Fukuoka
Hokkaido	3			2			5	1	1	5		3	1		3		3	1	5				1	34	Hokkaido
Kumamoto						1		1		5			3	1	1	2			3	2		1	1	21	Kumamoto
Shizuoka	1		1				1			4	4	1	1		1	3		1					1	19	Shizuoka
Niigata				1		1	1			1		2					1	1	1				1	10	Niigata
Kagawa			1		1		2	1		1	1					1			1				1	10	Kagawa
Toyama	1							1			1				1		2			1			1	8	Toyama
Oita	1						1					3								1			1	7	Oita
Wakayama						1	1														1		1	4	Wakayama
Ishikawa						1		1															1	3	Ishikawa
Gifu										1													1	2	Gifu
Miyagi						1	1		1			1	1	2				1	1		1	3		13	Miyagi
Kanagawa	2	3						1					1		1		1		2	1	1			13	Kanagawa
Nagano	2	1				5				1	1	1												11	Nagano
Hiroshima		1		1		1	2				2			2					1			1		11	Hiroshima
Okinawa		1					1	1	2		2	1							1	2				11	Okinawa
Mie	1	2		2		1		1				1			1									9	Mie
Ibaraki						1	2				1	1	1					1	1					8	Ibaraki
Saitama													1					3	4					8	Saitama
Kyoto		1	1		2						1				1	1			1					8	Kyoto
Okayama			2			1					1		1		3									8	Okayama
Tokushima			2													1	1					3		7	Tokushima
Kagoshima				1								1		1						1	2			6	Kagoshima

Ehime		1	1				1		1					1										5	Ehime	
Nagasaki	1									1				1						1	1			5	Nagasaki	
Fukushima	1						1						1				1							4	Fukushima	
Yamagata		1	1																		1			3	Yamagata	
Tochigi									1		1										1			3	Tochigi	
Fukui													2	1										3	Fukui	
Yamanashi											1			1				1						3	Yamanashi	
Shiga			1															1	1					3	Shiga	
Tottori	1																1						1	3	Tottori	
Saga		1			1									1										3	Saga	
Miyazaki					1									1				1						3	Miyazaki	
Aomori																1						1		2	Aomori	
Iwate																			1				1	2	Iwate	
Gunma														1			1							2	Gunma	
Nara		1																					1	2	Nara	
Shimane			1																	1				2	Shimane	
Yamaguchi					1								1											2	Yamaguchi	
Kochi										1														1	Kochi	
Akita																									Akita	
total	23	25	24	16	26	34	35	25	20	34	47	45	40	40	44	36	52	40	48	53	47	26	72	33	885	total

Data Source : <https://anzeninfo.mhlw.go.jp/user/anzen/tok/anst00.html> MHLW, Jaan

Return to https://www.jisha.or.jp/english/statistics/202312_05.html