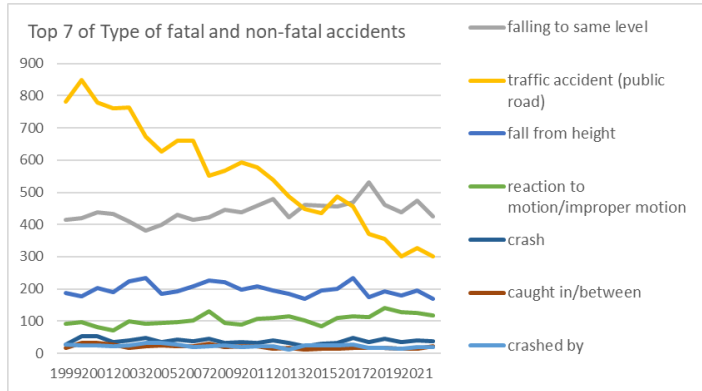
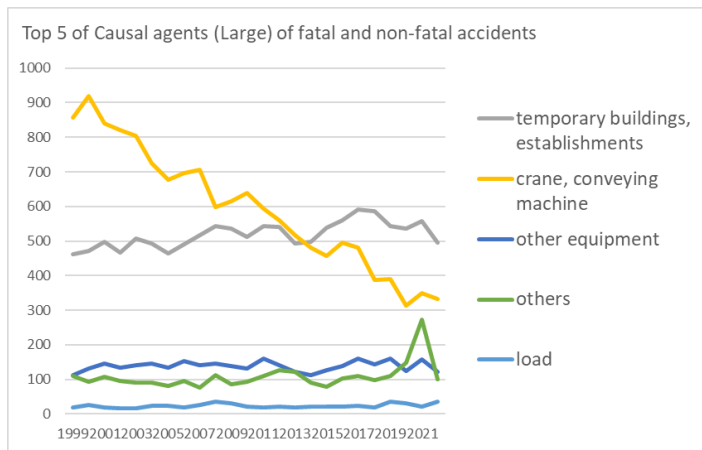


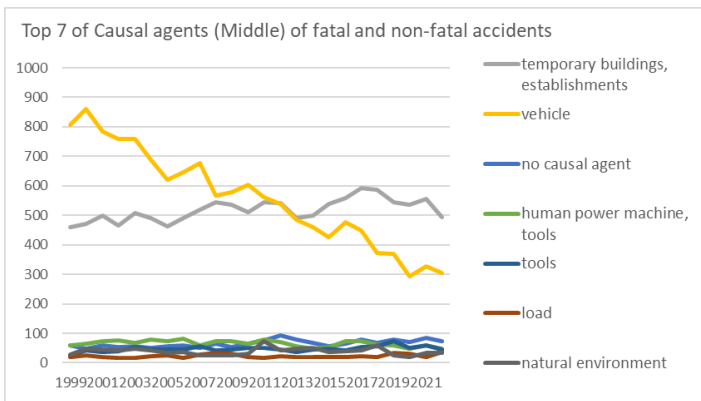
Transition of fatal and non-fatal accidents in 09 financial business/advertisement in Japan (1999-2022)



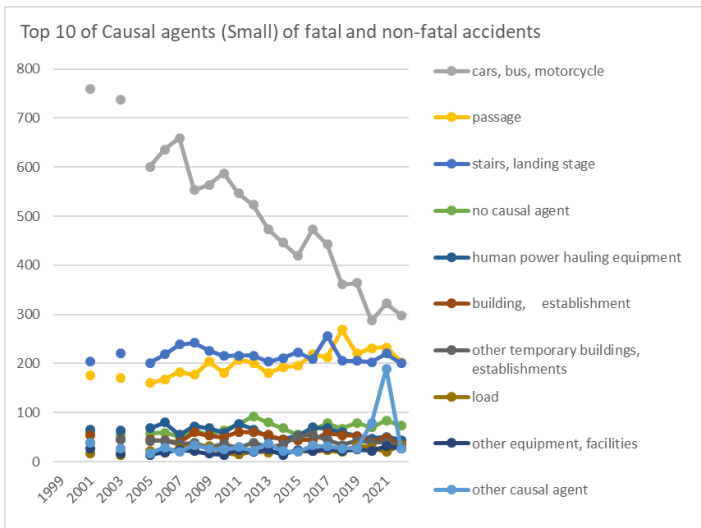
Transition of Top 7 of Type of fatal and non-fatal accidents in 09 financial business/advertisement in Japan (1999-2022)



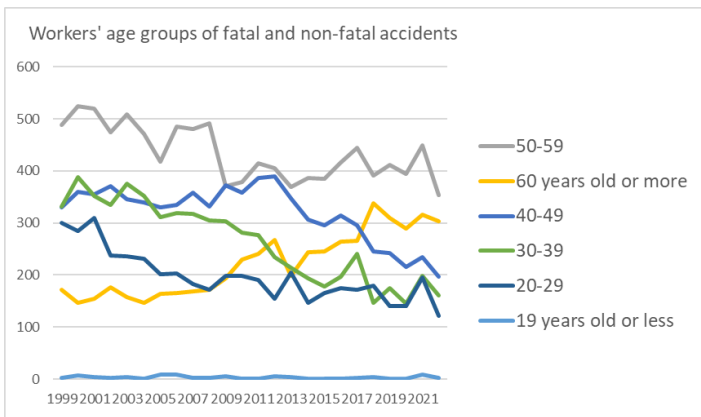
Transition of Top 5 of Causal agents (Large) of fatal and non-fatal accidents in 09 financial business/advertisement in Japan (1999-2022)



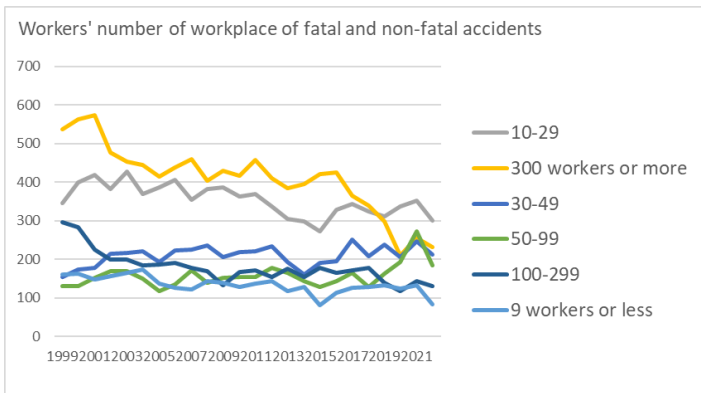
Transition of Top 7 of Causal agents (Middle) of fatal and non-fatal accidents in 09 financial business/advertisement in Japan (1999-2022)



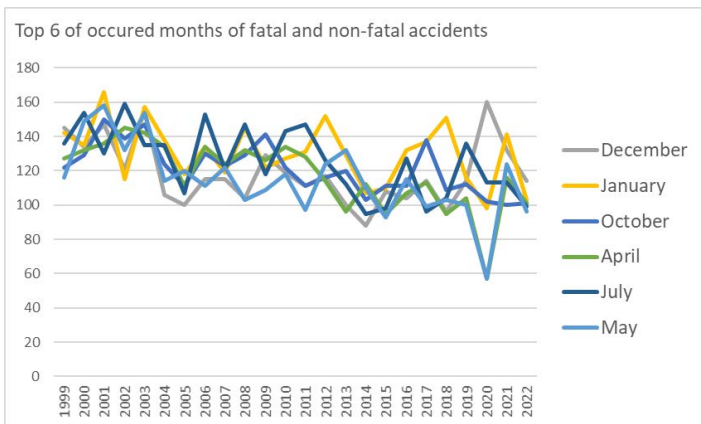
Transition of Top 10 of Causal agents (Small) of fatal and non-fatal accidents in 09 financial business/advertisement in Japan (1999-2022)



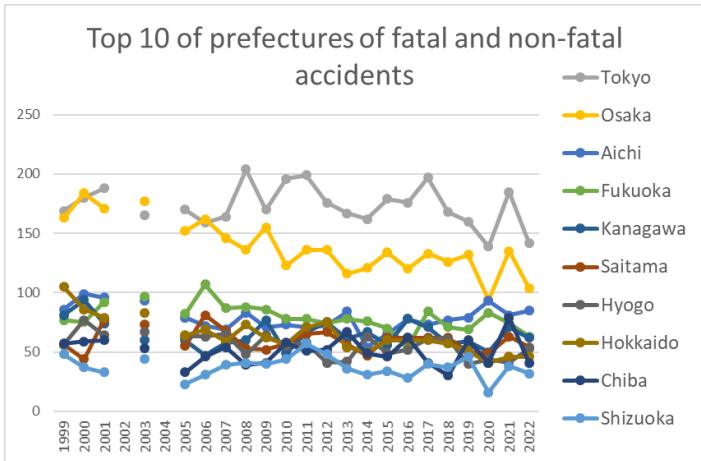
Transition of workers' age groups of fatal and non-fatal accidents in 09 financial business/advertisement in Japan (1999-2022)



Transition of workers' number of workplace of fatal and non-fatal accidents in 09 financial business/advertisement in Japan (1999-2022)



Transition of Top 6 of occurred months of fatal and non-fatal accidents in 09 financial business/advertisement in Japan (1999-2022)



Transition of Top 10 of prefectures of fatal and non-fatal accidents in 09 financial business/advertisement in Japan (1999-2022)

Transition of Type of fatal and non-fatal accidents in 09 financial business/advertisement in Japan (1999-2022)

Type of accidents	1999	2000	2001	2002	2003	2004	2005	2006	2007	2008	2009	2010	2011	2012	2013	2014	2015	2016	2017	2018	2019	2020	2021	2022	total	Type of accidents	
falling to same level	416	420	438	433	410	382	398	429	415	423	445	437	459	479	422	460	458	456	470	531	460	437	473	425	10,576	falling to same level	
traffic accident (public road)	783	849	778	761	763	674	626	661	661	552	566	593	577	538	488	449	435	488	456	370	355	300	327	302	13,352	traffic accident (public road)	
fall from height	188	178	204	191	223	235	185	193	207	227	222	198	209	196	184	168	196	200	233	175	192	180	196	170	4,750	fall from height	
reaction to motion/improper motion	92	97	82	72	99	91	94	97	101	130	94	90	108	111	114	101	83	109	115	112	141	127	125	117	2,502	reaction to motion/improper motion	
crash	28	54	54	34	39	47	34	43	38	46	32	36	33	40	33	23	30	33	49	36	46	34	40	38	920	crash	
caught in/between	17	31	32	27	17	21	25	21	21	29	19	23	21	14	17	12	14	13	17	17	18	14	13	21	474	caught in/between	
crashed by	27	24	25	21	25	31	32	26	19	23	24	19	22	22	11	24	24	24	28	16	17	13	20	20	537	crashed by	
others	5	11	11	6	7	11	8	8	8	8	15	9	23	12	31	12	10	7	12	8	4	60	174	13	473	others	
struck by flying or																											struck by flying

falling object	14	10	17	10	16	16	10	10	8	14	7	12	14	11	8	6	6	5	16	13	10	4	9	8	254	or falling object
collapse	1	6	6	7	6	6		5	10	5	2	3	4	4	4	2	2	4	6	4	7	3	3	7	107	collapse
contact to high/low-temperature	9	2	4	6	1	5	1	4	3	1	3	4	2	4	6	4	3	3	4	11	3	2	5	7	97	contact to high/low-temperature
cut	19	15	18	17	13	13	13	8	9	5	7	14	10	15	9	10	3	11	6	3	10	7	11	6	252	cut
traffic accident (others)	10	5	1	3	3	1	1	4	2	3	4	4	5	2	5	1	1	5	2	3	7		3	3	78	traffic accident (others)
contact to harmful substance	2		3	1			1	1		1				1	1	1	1	1		3	1	2	1	22	contact to harmful substance	
unclassifiable	10	5	12	5	5	8	3	4	5	4	4	3	1	5	4	1	3	5	2	2	5	1			97	unclassifiable
drown	1			1					1				22												25	drown
injury to the sole of the foot	1	1		2	1			3	1	1					1	1	1	2	1	1					17	injury to the sole of the foot
fire		1	9			1	3																		14	fire
explosion		1									2	1								2		2			8	explosion
electric shock			1												1			1		1					4	electric shock
burst															1	1									2	burst
total	1,623	1,710	1,695	1,597	1,628	1,542	1,434	1,517	1,509	1,472	1,446	1,446	1,510	1,454	1,339	1,277	1,270	1,366	1,419	1,304	1,279	1,185	1,401	1,138	34,561	total

Transition of Causal agents (Large) of fatal and non-fatal accidents in 09 financial business/advertisement in Japan (1999-2022)

Causal (L) agents	1999	2000	2001	2002	2003	2004	2005	2006	2007	2008	2009	2010	2011	2012	2013	2014	2015	2016	2017	2018	2019	2020	2021	2022	total	Causal (L) agents
temporary buildings, establishments	461	471	498	466	508	492	463	491	518	544	535	511	543	541	492	498	538	559	592	586	544	536	557	495	12,439	temporary buildings, establishments

																											establishments
crane, conveying machine	856	918	840	821	804	726	677	697	705	598	616	638	593	560	518	482	457	495	480	387	390	314	349	332	14,253	crane, conveying machine	
other equipment	112	131	145	134	141	145	134	154	142	145	139	132	159	141	123	113	127	138	159	143	159	124	157	123	3,320	other equipment	
others	111	93	108	96	91	91	81	95	76	112	85	93	109	127	122	91	78	102	110	97	110	148	273	100	2,599	others	
load	20	25	19	17	16	23	24	18	27	35	32	21	18	22	20	21	21	21	23	20	35	30	21	36	565	load	
environment	29	47	44	42	47	43	34	37	25	25	26	30	74	41	47	52	37	39	42	60	24	20	35	33	933	environment	
substance, material	16	15	24	10	9	9	13	18	10	8	8	11	10	11	9	11	8	5	9	8	10	5	7	13	257	substance, material	
machine	18	10	17	11	12	13	8	7	6	5	5	10	4	11	8	9	4	7	4	3	7	8	2	6	195	machine	
total	1,623	1,710	1,695	1,597	1,628	1,542	1,434	1,517	1,509	1,472	1,446	1,446	1,510	1,454	1,339	1,277	1,270	1,366	1,419	1,304	1,279	1,185	1,401	1,138	34,561	total	

Transition of Causal agents (Middle) of fatal and non-fatal accidents in 09 financial business/advertisement in Japan (1999-2022)

Causal (M) agents	1999	2000	2001	2002	2003	2004	2005	2006	2007	2008	2009	2010	2011	2012	2013	2014	2015	2016	2017	2018	2019	2020	2021	2022	total	Causal (M) agents
temporary buildings, establishments	461	471	498	466	508	492	463	491	518	544	535	511	543	541	492	498	538	559	592	586	544	536	557	495	12,439	temporary buildings, establishments
vehicle	806	860	785	759	760	687	621	647	677	566	579	603	562	538	486	460	427	478	448	372	369	293	327	306	13,416	vehicle
no causal agent	60	48	59	54	56	50	57	59	51	64	54	64	76	92	80	68	55	65	78	67	79	70	84	73	1,563	no causal agent
human power machine, tools	59	64	72	76	67	78	72	83	60	74	73	64	79	71	57	48	53	72	74	61	58	48	59	48	1,570	human power machine, tools
tools	25	43	37	40	54	45	44	46	57	43	44	52	52	46	38	46	48	42	53	55	74	50	60	46	1,140	tools
load	20	25	19	17	16	23	24	18	27	35	32	21	18	22	20	21	21	21	23	20	35	30	21	36	565	load

welding equipment	1	1																							2			4	equipment
engine	1			1				1																				3	engine
pressure vessel		1									1					1												3	pressure vessel
power transmission mechanism							1					1																2	power transmission mechanism
kiln, caldron			1									1																2	kiln, caldron
mobile silviculture machine																													mobile silviculture machine
chemical facilities																													chemical facilities
total	1,623	1,710	1,695	1,597	1,628	1,542	1,434	1,517	1,509	1,472	1,446	1,446	1,510	1,454	1,339	1,277	1,270	1,366	1,419	1,304	1,279	1,185	1,401	1,138	34,561			total	

Transition of Causal agents (Small) of fatal and non-fatal accidents in 09 financial business/advertisement in Japan (1999-2022)

Causal (S) agents	1999	2000	2001	2002	2003	2004	2005	2006	2007	2008	2009	2010	2011	2012	2013	2014	2015	2016	2017	2018	2019	2020	2021	2022	total	Causal (S) agents
cars, bus, motorcycle			759		738		601	636	659	553	564	587	546	523	474	446	419	473	443	361	364	287	322	298	10,053	cars, bus, motorcycle
passage			175		171		160	168	183	177	204	181	208	201	180	193	195	219	213	269	220	231	233	203	3,984	passage
stairs, landing stage			204		221		201	219	239	242	226	215	216	216	204	211	223	209	256	205	205	203	220	200	4,335	stairs, landing stage
no causal agent			59		56		57	59	51	64	54	64	76	92	80	68	55	65	78	67	79	70	84	73	1,351	no causal agent
human power hauling equipment			66		63		68	80	55	72	68	59	77	66	51	46	53	70	68	60	52	47	51	44	1,216	human power hauling equipment
building, establishment			54		46		45	43	40	60	53	49	61	60	55	45	44	44	58	54	52	41	49	35	988	building, establishment
other temporary																										other temporary

buildings, establishments			39		45		42	42	36	38	30	36	27	39	29	35	52	55	45	34	42	39	39	35	779	buildings, establishments	
load			17		14		21	18	27	33	31	17	15	21	19	19	21	21	23	20	33	29	20	34	453	load	
other equipment, facilities			26		16		14	19	24	21	16	14	24	20	25	14	24	21	26	22	25	22	31	27	431	other equipment, facilities	
other causal agent			38		27		17	29	20	34	26	25	30	22	37	21	20	33	31	27	27	78	189	26	757	other causal agent	
other environments			31		36		29	24	18	19	17	25	31	32	34	41	26	36	32	45	17	17	22	24	556	other environments	
other tools			16		26		19	31	36	26	20	25	22	21	14	24	23	26	28	27	36	28	34	23	505	other tools	
ladder			21		28		25	14	21	17	24	27	29	25	24	22	25	16	25	28	38	22	26	22	479	ladder	
truck			41		38		47	40	23	24	31	26	25	16	27	16	26	14	26	9	16	19	16	20	500	truck	
working platform, boot board			19		18		9	16	15	24	22	25	23	20	17	14	21	27	16	24	22	21	14	15	382	working platform, boot board	
other vehicles			25		22		17	10	17	12	14	15	14	14	10	11	8	5	4	7	4	4	5	8	226	other vehicles	
other materials			3		3		4	7	2	2		5	3	6	2	4	5	2	3	4	4	1	1	6	67	other materials	
high/cold temperature environment			5		2		2	1		1	1	2	4	3	7	3	2		3	9	1	1	5	6	58	high/cold temperature environment	
other general power machines			10		4		4	3	2	3	2	4	2	5	4	4	2		1	3	5	2	1	4	65	other general power machines	
hand tool			6		3		4	3	5	1	4	5	2	4	4	1		2	5	1	4	1	5	3	63	hand tool	
elevator, lift			3		1		5	1	2	3	2	3	4	2	1			1	1	1	1	1	2	1	3	37	elevator, lift
roof, beam, haze, crossbeam, principal rafter			4		1		1	2	2	1		1	4	1	3		4							3	27	roof, beam, haze, crossbeam, principal rafter	
transmission			8		2		3	4	1	7	2	1	4	4	3	3	2	3	4	5	2	2	7	2	69	transmission	
natural ground, rock			6		3		1	6	3		1	2	3	4	1	2	4	1	5	2	5	2	4	2	57	natural ground, rock	

stone, sand, substance			1		1		3	2	1		3		2	2	2	1	2			1	4	2	1	2	30	stone, sand, substance
scaffolding					4		2		2	1		1	3	3	3		2	1	2				1	2	27	scaffolding
opening			3		2		3	1	1	1		3	1	1	1		1		2		3	1	1	2	27	opening
machine/equipment as load			2		2		3			2	1	4	3	1	1	2					2	1	1	2	27	machine/equipment as load
lumber, bamboo			1		2			2	1	1	2	2		1				1			1		1	2	17	lumber, bamboo
other hazards, harmful substances			2					1		1	2	1			1	2			1	1			1	2	15	other hazards, harmful substances
unclassifiable			11		8		7	7	5	14	5	4	3	13	5	2	3	4	1	3	4			1	100	unclassifiable
metal material			6		3		6	4	4	4		2	5	1	3	3	1	2	4				2	1	51	metal material
forklift			2		1		1	5	2	3	1	2	2	4	1	3	1	1	4	3	3		4	1	44	forklift
standing tree					2		1	1			2		1	1		1	2	2	1	1	1			1	17	standing tree
crane					1		1					1					2	1	1					1	8	crane
chain saw			1										1	1				1			2		1	7	chain saw	
mobile crane			2		2									1		1								1	7	mobile crane
human power cranes					1					1										1		2	1	7	human power cranes	
vehicle for high lift work										1											1		1	3	vehicle for high lift work	
slinging tool							1					1											1	3	slinging tool	
water			1		3		1	5	3	5	5	1	33	1	4	4	2		1	2			4		75	water
railway vehicle			1				3	1	1	1	1	1	2	1	2	3			1	4	1	2			25	railway vehicle
circular sawing machine			3		2		1	1	1			3	1	2	1	3						1			22	circular sawing machine
conveyor			4					2		2		1							1	1					12	conveyor

other powered conveying machines			2				2	2		3					1							1		11	other powered conveying machines
inflammable substance			9					1	1															11	inflammable substance
other electrical equipment			1		1		1	2		2	1				1			1						10	other electrical equipment
food manufacturing machine					1		1	1	1	1			1	1			1	1						9	food manufacturing machine
abnormal environment			1		1							2		1	1	1			1					9	abnormal environment
harmful substance			2					1					1		1			1		1				8	harmful substance
other metal manufacturing machines			1				1		2	1						1							1	7	other metal manufacturing machines
human power machine										1			1	1	1			1		1				7	human power machine
other woodworking machines			1										1				2			1				6	other woodworking machines
inflammable gas										1					1				2		2			6	inflammable gas
printing machine			1		2						1					1								5	printing machine
excavating machine					1											1				1	1			4	excavating machine
grinding machine, buffing machine					2										1							1		4	grinding machine, buffing machine
other powered crane			1								1			2										4	other powered crane
other construction machines											1		1	1										3	other construction machines

50-59	488	524	520	475	509	471	418	486	481	491	371	378	414	405	370	386	385	416	444	391	411	394	449	353	10,430	50-59
60 years old or more	172	147	155	176	158	146	164	165	168	171	194	230	240	267	198	244	246	264	265	338	310	290	316	304	5,328	60 years old or more
40-49	330	360	355	371	346	340	330	335	359	331	373	358	387	389	348	306	295	315	296	246	242	216	234	196	7,658	40-49
30-39	331	388	352	334	375	352	311	319	317	305	303	281	277	234	214	193	178	196	240	146	175	145	199	161	6,326	30-39
20-29	300	284	309	238	236	232	202	203	182	171	199	198	191	154	205	147	165	175	172	179	140	140	195	122	4,739	20-29
19 years old or less	2	7	4	3	4	1	9	9	2	3	6	1	1	5	4	1	1		2	4	1		8	2	80	19 years old or less
total	1,623	1,710	1,695	1,597	1,628	1,542	1,434	1,517	1,509	1,472	1,446	1,446	1,510	1,454	1,339	1,277	1,270	1,366	1,419	1,304	1,279	1,185	1,401	1,138	34,561	total

Transition of workers' number of workplace of fatal and non-fatal accidents in 09 financial business/advertisement in Japan (1999-2022)

Workers scale	1999	2000	2001	2002	2003	2004	2005	2006	2007	2008	2009	2010	2011	2012	2013	2014	2015	2016	2017	2018	2019	2020	2021	2022	total	Workers scale
10-29	346	400	419	382	427	370	387	406	353	383	387	362	369	337	304	298	272	329	343	324	310	336	351	300	8,495	10-29
300 workers or more	536	562	574	477	453	444	414	437	460	403	430	416	458	409	384	394	421	424	364	338	297	210	255	231	9,791	300 workers or more
30-49	154	173	178	215	217	221	193	223	225	236	206	219	220	234	193	161	191	194	250	208	238	206	247	211	5,013	30-49
50-99	131	130	151	169	168	150	117	135	171	138	152	154	154	178	164	143	128	143	165	128	162	193	272	184	3,780	50-99
100-299	296	282	225	198	199	184	187	190	178	168	133	167	172	153	176	153	177	164	171	177	139	117	144	130	4,280	100-299
9 workers or less	160	163	148	156	164	173	136	126	122	144	138	128	137	143	118	128	81	112	126	129	133	123	132	82	3,202	9 workers or less
total	1,623	1,710	1,695	1,597	1,628	1,542	1,434	1,517	1,509	1,472	1,446	1,446	1,510	1,454	1,339	1,277	1,270	1,366	1,419	1,304	1,279	1,185	1,401	1,138	34,561	total

Transition of occurred months of fatal and non-fatal accidents in 09 financial business/advertisement in Japan (1999-2022)

Month	1999	2000	2001	2002	2003	2004	2005	2006	2007	2008	2009	2010	2011	2012	2013	2014	2015	2016	2017	2018	2019	2020	2021	2022	total	Month
December	145	134	147	121	155	106	100	115	115	104	129	119	111	117	100	88	108	104	114	96	114	160	132	114	2,848	December
January	142	135	166	115	157	138	118	134	119	145	122	127	131	152	129	107	110	132	137	151	116	98	141	103	3,125	January
October	122	129	150	139	147	124	111	130	123	129	141	122	111	116	120	103	111	111	138	109	112	102	100	101	2,901	October
April	127	132	136	145	142	134	111	134	124	132	126	134	128	114	96	112	95	107	113	95	104	57	116	101	2,815	April

Nagano	25	20	20		13		30	19	24	15	24	15	19	9	20	11	23	22	22	12	12	11	14	6	386	Nagano
Oita	20	16	27		13		14	11	9	10	16	10	7	8	10	13	8	13	18	19	20	6	5	6	279	Oita
Tokushima	19	9	21		4		6	6	14	5	7	11	13	10	10	6	6	7	6	6	4	4	17	6	197	Tokushima
Iwate	11	13	12		13		17	12	13	11	13	12	22	10	8	13	7	7	13	6	14	13	9	5	254	Iwate
Yamagata	9	14	13		19		9	13	9	16	15	16	13	13	8	10	17	15	11	11	12	11	4	4	262	Yamagata
Tottori	10	9	6		7		6	2	10	6	5	10	10	7	7	4		10	5	2	6	3	10	4	139	Tottori
Kochi	12	19	20		9		11	10	13	5	8	10	9	9	6	16	6	7	9	9	5	7	7	3	210	Kochi
Okinawa	9	4	2		9		7	10	11	10	12	11	10	17	8	12	7	5	14	16	5	4	13	3	199	Okinawa
Toyama	14	16	7		12		5	9	6	11	17	9	11	18	11	7	8	14	9	16	13	9	7	2	231	Toyama
total	1,623	1,710	1,695	1,597	1,628	1,542	1,434	1,517	1,509	1,472	1,446	1,446	1,510	1,454	1,339	1,277	1,270	1,366	1,419	1,304	1,279	1,185	1,401	1,138	34,561	total

Data Source : <https://anzeninfo.mhlw.go.jp/user/anzen/tok/anst00.html> MHLW, Jaan

Return to https://www.jisha.or.jp/english/statistics/202312_05.html