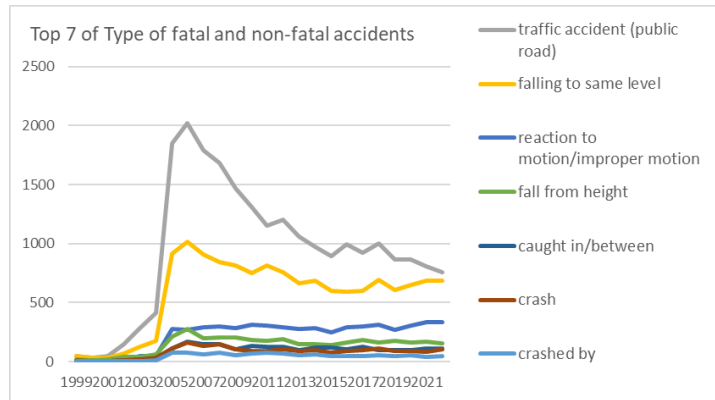
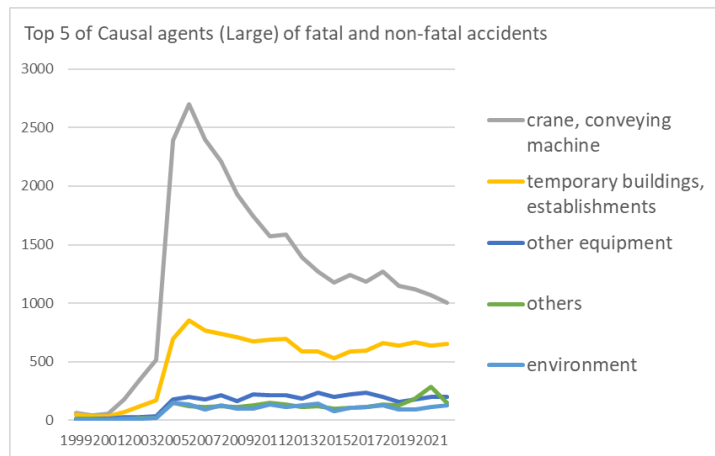


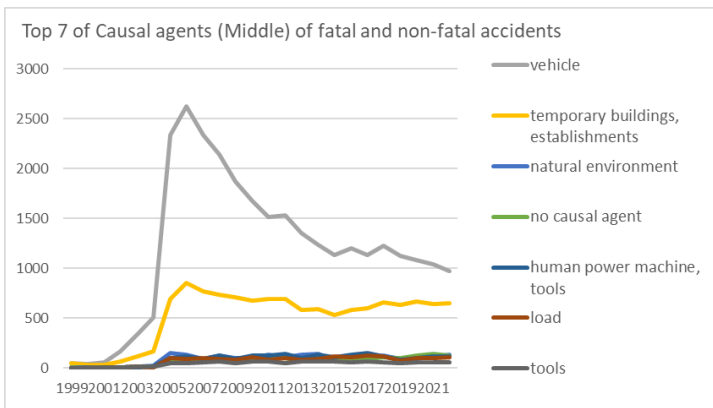
Transition of fatal and non-fatal accidents in 1101 telecommunication service in Japan (1999-2022)



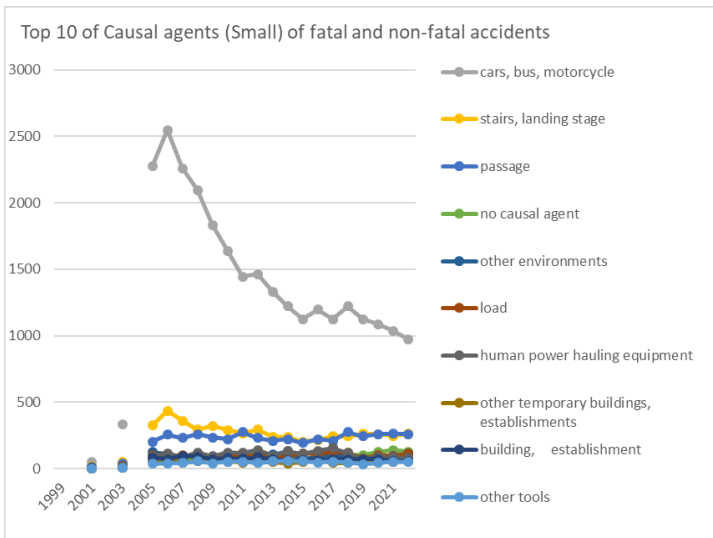
Transition of Top 7 of Type of fatal and non-fatal accidents in 1101 telecommunication service in Japan (1999-2022)



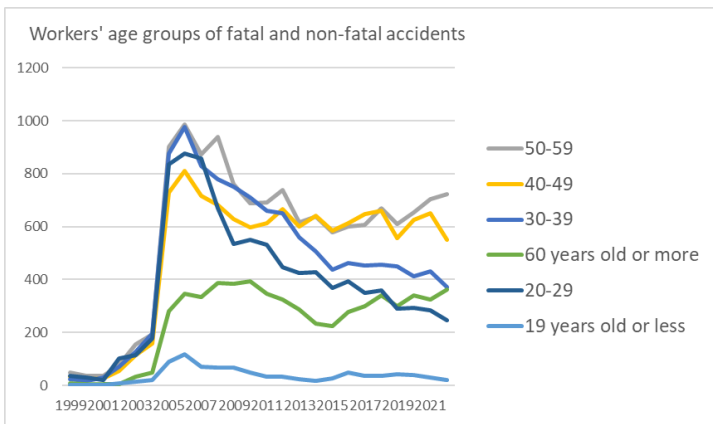
Transition of Top 5 of Causal agents (Large) of fatal and non-fatal accidents in 1101 telecommunication service in Japan (1999-2022)



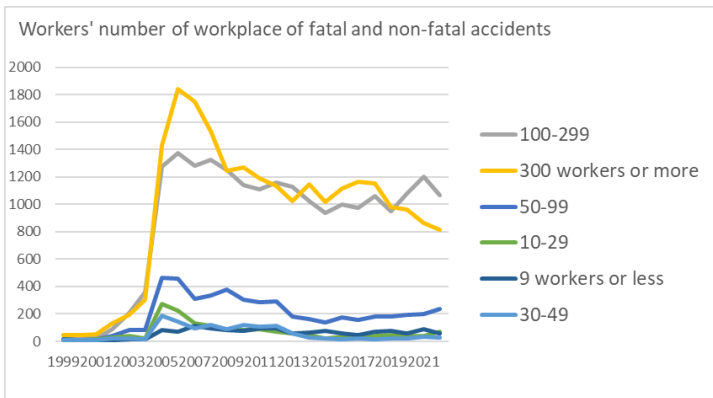
Transition of Top 7 of Causal agents (Middle) of fatal and non-fatal accidents in 1101 telecommunication service in Japan (1999-2022)



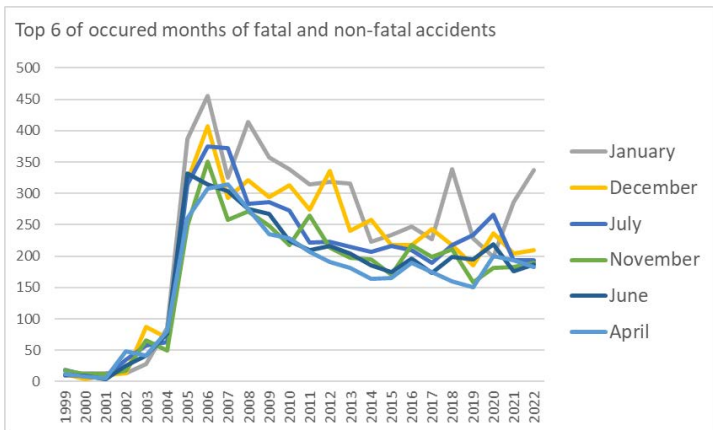
Transition of Top 10 of Causal agents (Small) of fatal and non-fatal accidents in 1101 telecommunication service in Japan (1999-2022)



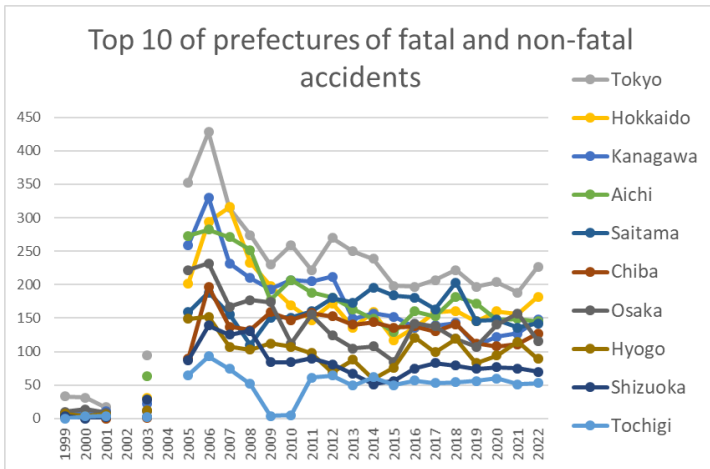
Transition of workers' age groups of fatal and non-fatal accidents in 1101 telecommunication service in Japan (1999-2022)



Transition of workers' number of workplace of fatal and non-fatal accidents in 1101 telecommunication service in Japan (1999-2022)



Transition of Top 6 of occurred months of fatal and non-fatal accidents in 1101 telecommunication service in Japan (1999-2022)



Transition of Top 10 of prefectures of fatal and non-fatal accidents in 1101 telecommunication service in Japan (1999-2022)

Transition of Type of fatal and non-fatal accidents in 1101 telecommunication service in Japan (1999-2022)

Type of accidents	1999	2000	2001	2002	2003	2004	2005	2006	2007	2008	2009	2010	2011	2012	2013	2014	2015	2016	2017	2018	2019	2020	2021	2022	total	Type of accidents
traffic accident (public road)	47	33	46	145	284	410	1,846	2,021	1,789	1,682	1,468	1,307	1,155	1,203	1,059	970	897	992	922	999	863	866	806	756	22,566	traffic accident (public road)
falling to same level	48	32	33	70	123	178	914	1,013	907	844	815	749	812	756	666	686	601	591	598	690	608	653	683	685	13,755	falling to same level
reaction to motion/improper motion	12	10	6	21	49	50	278	266	289	298	284	309	307	288	279	282	244	290	295	310	268	306	336	334	5,411	reaction to motion/improper motion
fall from height	19	13	18	37	40	58	215	275	198	201	201	184	173	187	146	150	139	159	186	163	178	164	166	153	3,423	fall from height
caught in/between	6	3	2	11	15	22	108	167	147	144	101	131	122	123	100	117	118	107	126	97	95	97	110	112	2,181	caught in/between
crash	8	7	3	14	20	30	112	158	135	148	102	93	92	101	92	99	74	91	97	108	90	91	81	102	1,948	crash
crashed by	2	4	5	5	6	8	73	73	60	73	56	70	72	69	51	64	49	47	44	54	50	55	41	43	1,074	crashed by
struck by flying or	3	3	1	4	3	8	27	30	31	33	27	37	32	43	25	36	29	39	38	22	16	15	19	25	546	struck by flying



machine	63	43	57	182	348	515	2,392	2,698	2,397	2,211	1,934	1,741	1,569	1,588	1,391	1,270	1,178	1,240	1,181	1,269	1,151	1,122	1,072	1,006	29,618	conveying machine
temporary buildings, establishments	47	32	35	70	119	172	697	854	769	736	709	675	690	693	588	590	533	587	599	662	637	665	639	653	12,451	temporary buildings, establishments
other equipment	12	11	11	26	31	38	181	197	180	217	167	222	214	216	188	235	204	222	236	203	154	181	197	201	3,744	other equipment
others	11	11	5	9	18	23	151	118	112	118	115	126	149	133	112	121	97	106	117	134	131	186	285	151	2,539	others
environment	9	6	4	12	14	22	153	137	92	126	99	98	137	113	132	143	80	108	113	130	90	94	116	132	2,160	environment
load	2	3	2	12	17	12	105	92	104	96	86	107	88	100	86	95	117	113	131	119	76	100	100	112	1,875	load
substance, material	4	6		4	2	5	23	16	16	11	7	13	21	9	13	11	7	14	10	3	10	9	12	17	243	substance, material
machine	2	2	3	2	5	5	9	5	11	9	8	4	8	8	3	4	4	6	6	3	3	5	4	2	121	machine
total	150	114	117	317	554	792	3,711	4,117	3,681	3,524	3,125	2,986	2,876	2,860	2,513	2,469	2,220	2,396	2,393	2,523	2,252	2,362	2,425	2,274	52,751	total

Transition of Causal agents (Middle) of fatal and non-fatal accidents in 1101 telecommunication service in Japan (1999-2022)

Causal (M) agents	1999	2000	2001	2002	2003	2004	2005	2006	2007	2008	2009	2010	2011	2012	2013	2014	2015	2016	2017	2018	2019	2020	2021	2022	total	Causal (M) agents
vehicle	51	40	55	171	339	505	2,336	2,624	2,336	2,142	1,867	1,677	1,518	1,532	1,355	1,238	1,132	1,201	1,135	1,226	1,126	1,087	1,043	976	28,712	vehicle
temporary buildings, establishments	47	32	35	70	119	172	697	854	769	736	709	675	690	693	588	590	533	587	599	662	637	665	639	653	12,451	temporary buildings, establishments
natural environment	9	6	4	12	14	22	153	137	92	126	99	98	137	113	132	143	80	108	113	130	90	94	116	132	2,160	natural environment
no causal agent	6	3	4	6	13	19	71	71	75	83	87	99	105	102	78	100	73	87	97	106	101	123	140	128	1,777	no causal agent
human power machine,																										human power

tools	2	3	6	12	12	18	100	120	95	128	95	125	124	141	100	134	113	133	156	122	85	99	115	117	2,155	machine, tools
load	2	3	2	12	17	12	105	92	104	96	86	107	88	100	86	95	117	113	131	119	76	100	100	112	1,875	load
tools	4	6	5	8	15	13	47	50	59	66	50	68	66	53	64	69	66	61	65	59	51	57	60	57	1,119	tools
conveying machine	11	1	2	10	8	10	51	65	56	61	65	58	48	48	33	31	42	36	43	38	22	34	27	26	826	conveying machine
other equipments, facilities	5	1		6	3	6	31	26	26	19	21	26	22	22	21	30	23	21	15	19	17	23	18	25	426	other equipments, facilities
other causal agent	2	6	1	1	3	3	72	41	30	29	25	23	41	29	30	16	22	18	17	23	28	62	142	21	685	other causal agent
materials	4	6		2	2	5	21	15	16	11	7	12	21	9	13	11	7	12	10	3	8	9	12	17	233	materials
crane	1	2		1	1		5	9	5	8	2	6	3	8	3	1	4	3	3	5	3	1	2	4	80	crane
unclassifiable	3	2		2	2	1	8	6	7	6	3	4	3	2	4	5	2	1	3	5	2	1	3	2	77	unclassifiable
electric equipment	1	1			1	1	3			4	1	3	1		3	2	2	7		3	1	2	4	2	42	electric equipment
general machine	1	1	1		2	3	6	4	7	6	7	4	4	7	1	1	4	4	4	3	2	3	2	1	78	general machine
woodworking machine				1	1				1															1	4	woodworking machine
construction machine	1	1	2	1	2	2	1	1		3			3	1	1	2			1			1	1		24	construction machine
hazards, harmful substances				2			2	1				1						2			2				10	hazards, harmful substances
power transmission mechanism							1		3									1	1		1	1			8	power transmission







natural ground, rock			1		1		13	9	6	12	7	5	6	6	5	4	3	4	5	5	4	7	1	2	106	natural ground, rock
unclassifiable					2		8	6	7	6	3	4	3	2	4	5	2	1	3	5	2	1	3	2	69	unclassifiable
opening					1		2	2	4	2	2	1		4	1	3	1	3	5	2	2	2	4	2	43	opening
other powered conveying machines					1		5	1	1	3	2	1	2	3	2	1	2	2	3	1	1	1	3	2	37	other powered conveying machines
roof, beam, haze, crossbeam, principal rafter			2		1		2	2		3	1	1	2	2		1	1	2		1		2	1	2	26	roof, beam, haze, crossbeam, principal rafter
other vehicles			3		8		63	75	78	45	34	38	73	70	24	18	8	6	12	4	3	1	5	1	569	other vehicles
conveyor							7	5	9	10	6	12	5	4	2	4	3	3	8	4	1	4	2	1	90	conveyor
water					1		6	7		1	4	6	35	1	3	2		2	5	4	1	2	1	1	82	water
other general power machines			1		2		4	4	7	6	6	3	4	6	1	1	4	4	4	3	2	3	2	1	68	other general power machines
hand tool			1		2		8	4	9	6	1	3	5		1	3	2	1	1	1	3	1		1	53	hand tool
other materials					1		3	5	5	1	2	2	3	4	3	4	3	2	2	1	2	5	3	1	52	other materials
standing tree							3	3		3		1	1	2	4		4	5	2	3	5	3	6	1	46	standing tree
forklift								1	2	2	1	4	3	3	2	2	3			1	2	2	1	1	30	forklift
transmission					1		2			3	1	2			3	1	2	6		2	1	1	3	1	29	transmission
scaffolding					2				2		1		2	1			1	1	1			1	2	1	15	scaffolding
electric power facilities							1			1														1	3	electric power facilities
other woodworking machines					1																			1	2	other woodworking machines
machine/equipment as load							4	2	3	2	1	3		1			1	1					3		21	machine/equipment as load

vehicle for high lift work			2		1			1		2			3	1		1									12	vehicle for high lift work
human power machine								2	1	1			2		1	1			1		2		1		12	human power machine
power transmission mechanism								1											1	1		1	1		8	power transmission mechanism
other electrical equipment												1	1			1			1		1	1		7	other electrical equipment	
engine								1				1		1					1				1	6	engine	
crane								2				1	1		1						1			6	crane	
railway vehicle			1					1		1										1			1	5	railway vehicle	
excavating machine								1		1													1	4	excavating machine	
derrick crane								1	1	1												1		4	derrick crane	
other powered crane												1		1									1	4	other powered crane	
other hazards, harmful substances								2	1													1		4	other hazards, harmful substances	
printing machine								1				1	1											3	printing machine	
mobile crane								1		1												1		3	mobile crane	
leveling, transporting or loading machine																							1	2	leveling, transporting or loading machine	
timbering										1												1		2	timbering	
explosive substance																						2		2	explosive substance	
harmful substance												1										1		2	harmful substance	
circular sawing																								1	circular sawing	







total	150	114	117	317	554	792	3,711	4,117	3,681	3,524	3,125	2,986	2,876	2,860	2,513	2,469	2,220	2,396	2,393	2,523	2,252	2,362	2,425	2,274	52,751	total
-------	-----	-----	-----	-----	-----	-----	-------	-------	-------	-------	-------	-------	-------	-------	-------	-------	-------	-------	-------	-------	-------	-------	-------	-------	--------	-------

Transition of workers' age groups of fatal and non-fatal accidents in 1101 telecommunication service in Japan (1999-2022)

Age	1999	2000	2001	2002	2003	2004	2005	2006	2007	2008	2009	2010	2011	2012	2013	2014	2015	2016	2017	2018	2019	2020	2021	2022	total	Age
50-59	49	35	36	77	155	192	901	987	872	939	759	688	691	740	617	638	578	602	606	670	609	654	705	723	13,523	50-59
40-49	34	25	27	54	113	159	728	812	716	683	628	596	612	665	599	642	585	613	648	661	558	625	651	551	11,985	40-49
30-39	23	18	29	72	126	196	877	977	828	780	751	709	661	651	560	508	436	462	453	456	450	412	430	372	11,237	30-39
60 years old or more	7	5	4	6	34	47	282	347	335	387	384	393	347	323	288	234	224	277	299	340	301	340	326	362	5,892	60 years old or more
20-29	35	30	19	101	113	178	835	875	859	668	536	550	532	447	426	429	370	395	351	359	291	293	284	247	9,223	20-29
19 years old or less	2	1	2	7	13	20	88	119	71	67	67	50	33	34	23	18	27	47	36	37	43	38	29	19	891	19 years old or less
total	150	114	117	317	554	792	3,711	4,117	3,681	3,524	3,125	2,986	2,876	2,860	2,513	2,469	2,220	2,396	2,393	2,523	2,252	2,362	2,425	2,274	52,751	total

Transition of workers' number of workplace of fatal and non-fatal accidents in 1101 telecommunication service in Japan (1999-2022)

Workers scale	1999	2000	2001	2002	2003	2004	2005	2006	2007	2008	2009	2010	2011	2012	2013	2014	2015	2016	2017	2018	2019	2020	2021	2022	total	Workers scale
100-299	46	29	24	88	203	357	1,277	1,375	1,279	1,326	1,252	1,142	1,110	1,161	1,129	1,021	937	996	977	1,062	948	1,080	1,203	1,067	21,089	100-299
300 workers or more	48	46	50	134	192	302	1,427	1,841	1,751	1,531	1,242	1,268	1,188	1,133	1,025	1,145	1,019	1,113	1,163	1,151	980	963	865	814	22,391	300 workers or more
50-99	18	12	16	42	80	85	463	461	308	337	376	304	288	291	184	163	141	178	158	183	184	196	197	234	4,899	50-99
10-29	17	11	13	25	43	21	274	225	131	112	84	80	87	68	59	49	24	36	24	40	47	40	42	71	1,623	10-29
9 workers or less	14	8	7	8	15	13	85	71	116	97	81	75	95	93	57	65	75	59	48	71	74	60	87	60	1,434	9 workers or less
30-49	7	8	7	20	21	14	185	144	96	121	90	117	108	114	59	26	24	14	23	16	19	23	31	28	1,315	30-49
total	150	114	117	317	554	792	3,711	4,117	3,681	3,524	3,125	2,986	2,876	2,860	2,513	2,469	2,220	2,396	2,393	2,523	2,252	2,362	2,425	2,274	52,751	total

Transition of occurred months of fatal and non-fatal accidents in 1101 telecommunication service in Japan (1999-2022)

Month	1999	2000	2001	2002	2003	2004	2005	2006	2007	2008	2009	2010	2011	2012	2013	2014	2015	2016	2017	2018	2019	2020	2021	2022	total	Month
-------	------	------	------	------	------	------	------	------	------	------	------	------	------	------	------	------	------	------	------	------	------	------	------	------	-------	-------

January	9	13	13	14	28	86	387	456	325	414	358	339	314	318	316	223	234	247	227	339	229	199	286	337	5,711	January
December	12	4	11	14	87	70	320	407	293	321	294	313	274	336	240	258	217	217	243	217	186	237	204	209	4,984	December
July	19	11	8	35	58	63	314	375	372	283	286	273	222	223	215	207	216	209	190	218	234	266	194	193	4,684	July
November	17	12	12	17	66	50	248	350	258	271	249	217	265	213	197	195	171	217	199	211	159	181	183	189	4,147	November
June	11	9	4	25	41	77	332	314	303	275	268	225	210	216	204	186	175	196	173	199	195	219	176	187	4,220	June
April	12	8	5	48	41	81	261	308	315	276	235	229	207	191	182	164	165	189	175	160	150	200	193	183	3,978	April
March	9	9	15	17	31	54	341	293	347	262	252	235	262	229	183	200	177	162	203	238	168	165	218	180	4,250	March
September	16	5	11	30	32	58	241	305	244	229	202	195	239	214	163	172	161	205	191	170	176	182	195	175	3,811	September
February	14	6	11	18	26	59	334	336	293	378	259	276	206	288	184	308	158	189	190	186	199	175	190	171	4,454	February
October	9	14	14	25	59	77	292	362	297	268	270	253	245	237	223	202	184	197	257	189	174	192	195	159	4,394	October
August	13	12	4	36	48	58	358	293	325	258	217	231	222	172	193	201	176	184	169	178	197	176	208	153	4,082	August
May	9	11	9	38	37	59	283	318	309	289	235	200	210	223	213	153	186	184	176	218	185	170	183	138	4,036	May
total	150	114	117	317	554	792	3,711	4,117	3,681	3,524	3,125	2,986	2,876	2,860	2,513	2,469	2,220	2,396	2,393	2,523	2,252	2,362	2,425	2,274	52,751	total

Transition of prefectures of fatal and non-fatal accidents in 1101 telecommunication service in Japan (1999-2022)

Prefecture	1999	2000	2001	2002	2003	2004	2005	2006	2007	2008	2009	2010	2011	2012	2013	2014	2015	2016	2017	2018	2019	2020	2021	2022	total	Prefecture
Tokyo	33	31	17		94		353	428	315	274	230	259	222	270	250	239	198	197	207	222	197	204	188	227	4,655	Tokyo
Hokkaido	5	2	3		31		202	294	316	233	198	169	147	172	136	159	117	136	159	161	145	160	156	182	3,283	Hokkaido
Kanagawa	7	7	11		22		259	330	232	210	193	207	205	212	149	157	152	136	139	143	109	122	127	148	3,277	Kanagawa
Aichi	7	1	5		63		273	282	271	252	177	207	188	181	163	149	129	160	153	182	172	147	149	145	3,456	Aichi
Saitama	3	3	2		2		159	188	156	110	151	151	160	180	173	196	184	181	163	203	146	148	136	142	2,937	Saitama
Chiba	2	1			1		90	197	137	132	159	147	158	153	140	144	136	138	130	141	112	108	111	127	2,464	Chiba
Osaka	10	14	9		11		222	232	167	177	174	112	155	124	105	108	85	142	138	119	107	140	157	116	2,624	Osaka
Hyogo	7	4	6		12		149	152	107	103	112	107	98	69	88	59	76	121	99	119	83	94	115	89	1,869	Hyogo
Shizuoka	4		2		29		87	139	125	131	84	84	90	81	67	51	56	75	83	79	74	77	75	70	1,563	Shizuoka





Yamanashi	2	1			1		37	35	31	33	22	35	33	17	24	23	16	15	18	16	16	21	17	21	434	Yamanashi
Yamagata	1	3	1		2		54	47	25	60	36	32	34	36	23	26	22	26	26	21	23	17	9	20	544	Yamagata
Akita		1	2		3		24	18	27	24	31	20	29	30	20	19	14	15	21	20	26	21	19	20	404	Akita
Miyazaki	6				3		47	27	35	31	18	18	14	6	11	19	10	14	6	16	11	9	25	19	345	Miyazaki
Kumamoto	3	3	2		6		33	44	58	52	46	39	32	25	26	17	15	23	18	16	20	20	22	16	536	Kumamoto
Tokushima	2	2	1		5		20	21	14	24	21	24	19	23	27	23	17	29	18	17	23	19	21	16	386	Tokushima
Shimane	2	1			9		7	30	30	38	35	36	27	19	17	18	19	18	16	20	20	11	20	15	408	Shimane
Kochi	1	1	3		3		19	17	23	16	18	12	21	23	18	18	16	20	19	13	21	19	11	14	326	Kochi
Wakayama					2		35	14	27	24	32	32	21	12	17	24	18	18	21	17	12	20	20	12	378	Wakayama
Fukui					1		27	9	17	19	13	17	22	17	13	17	16	13	22	21	18	19	17	12	310	Fukui
Saga	1	1			7		21	28	37	23	29	20	15	12	9	7	8	10	3	9	16	8	16	11	291	Saga
Kagawa		1	1		8		31	27	41	27	24	33	28	30	20	21	22	25	14	26	19	21	19	10	448	Kagawa
Tottori	2	2			1		27	13	15	20	14	11	12	13	12	7	7	12	3	11	11	17	9	10	229	Tottori
Oita	6	1	2		6		47	33	27	36	42	24	20	22	15	18	16	25	20	18	14	30	29	9	460	Oita
total	150	114	117	317	554	792	3,711	4,117	3,681	3,524	3,125	2,986	2,876	2,860	2,513	2,469	2,220	2,396	2,393	2,523	2,252	2,362	2,425	2,274	52,751	total

Data Source : <https://anzeninfo.mhlw.go.jp/user/anzen/tok/anst00.html> MHLW, Jaan

Return to [https://www.jisha.or.jp/english/statistics/202312\\_05.html](https://www.jisha.or.jp/english/statistics/202312_05.html)