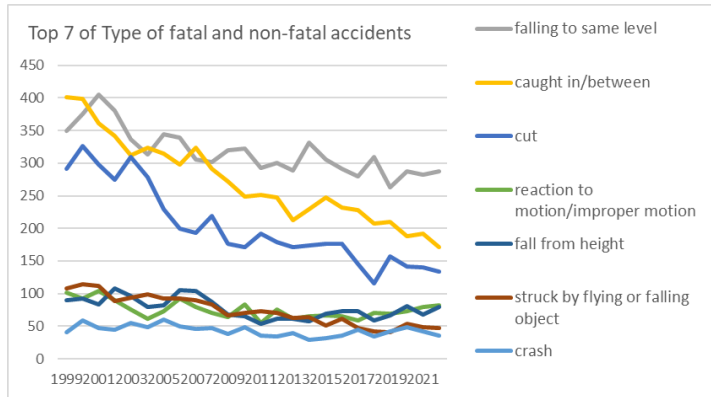
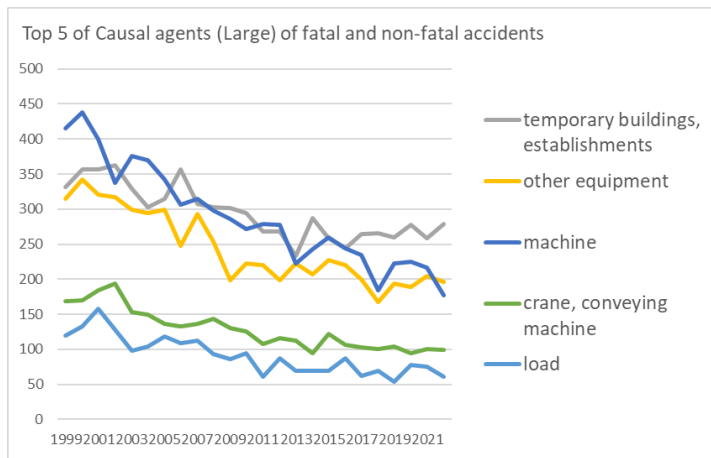


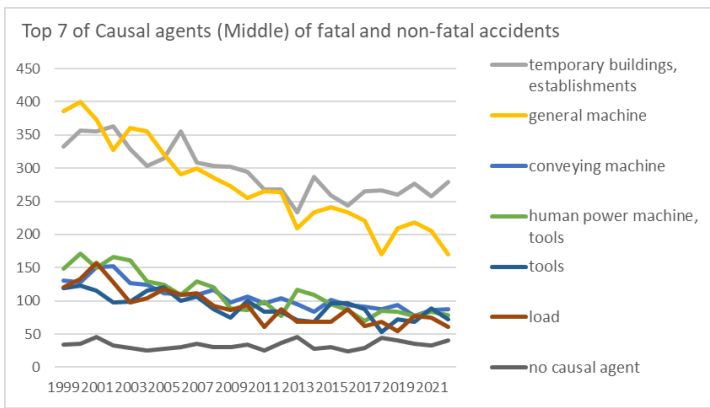
Transition of fatal and non-fatal accidents in 010102 fishery products in Japan (1999-2022)



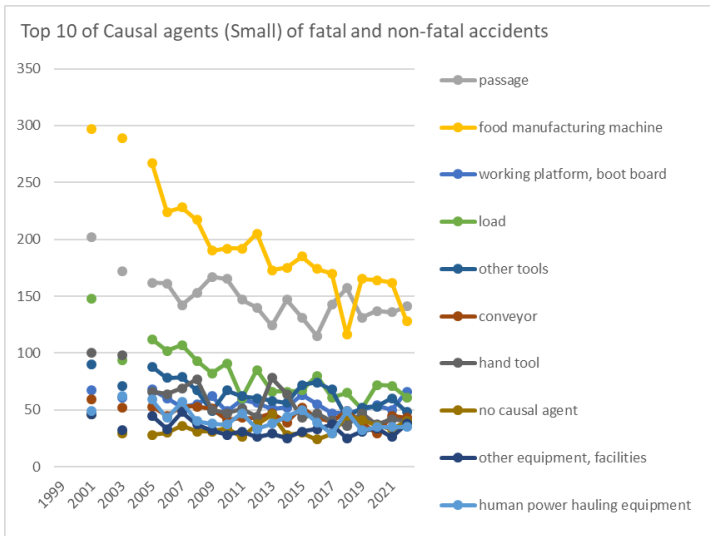
Transition of Top 7 of Type of fatal and non-fatal accidents in 010102 fishery products in Japan (1999-2022)



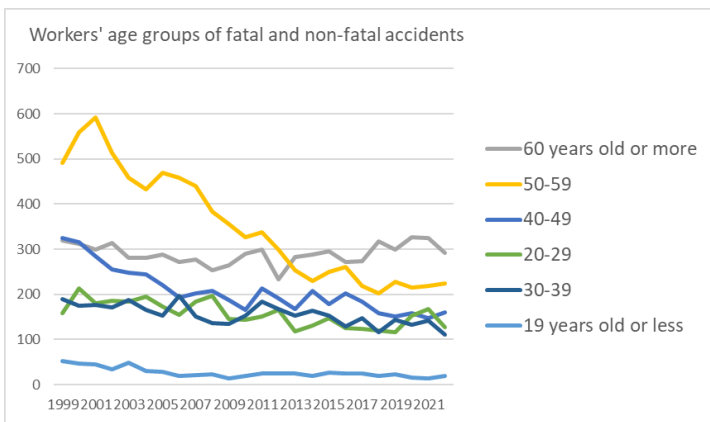
Transition of Top 5 of Causal agents (Large) of fatal and non-fatal accidents in 010102 fishery products in Japan (1999-2022)



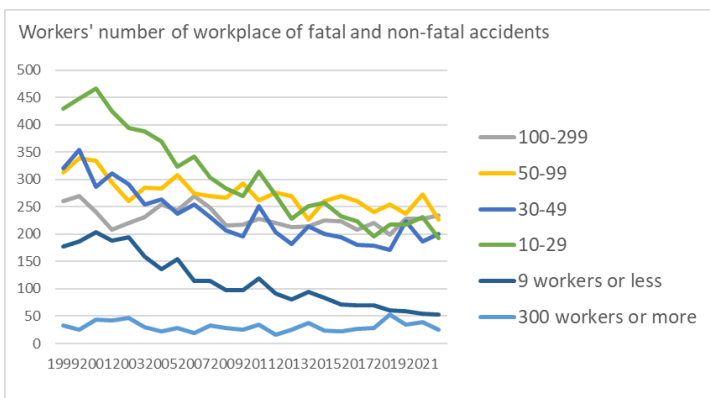
Transition of Top 7 of Causal agents (Middle) of fatal and non-fatal accidents in 010102 fishery products in Japan (1999-2022)



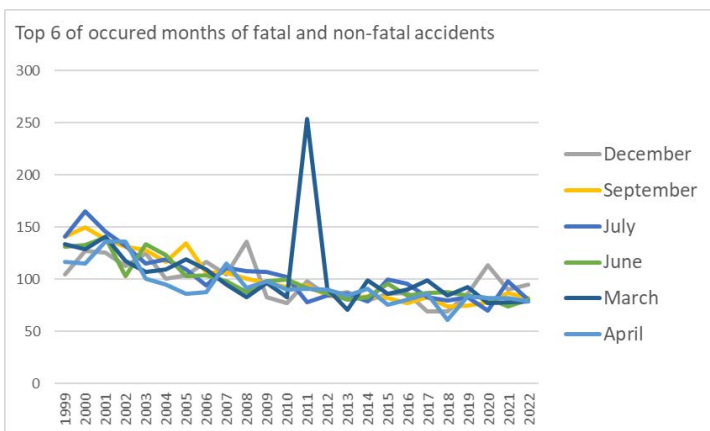
Transition of Top 10 of Causal agents (Small) of fatal and non-fatal accidents in 010102 fishery products in Japan (1999-2022)



Transition of workers' age groups of fatal and non-fatal accidents in 010102 fishery products in Japan (1999-2022)



Transition of workers' number of workplace of fatal and non-fatal accidents in 010102 fishery products in Japan (1999-2022)



Transition of Top 6 of occurred months of fatal and non-fatal accidents in 010102 fishery products in Japan (1999-2022)

establishments	332	357	356	363	329	303	315	356	308	303	302	294	268	268	233	287	259	244	265	266	260	277	258	279	7,082	buildings, establishments
other equipment	315	342	321	317	299	294	299	248	293	254	199	222	220	199	223	207	227	220	200	168	194	189	204	196	5,850	other equipment
machine	415	438	400	338	376	370	342	306	315	298	286	271	279	278	223	243	260	244	235	184	223	225	216	177	6,942	machine
crane, conveying machine	169	170	184	194	153	150	136	133	136	144	130	125	108	116	113	95	122	106	103	100	104	94	101	99	3,085	crane, conveying machine
load	120	133	158	128	98	104	118	109	112	93	86	94	61	87	69	69	69	87	62	69	54	78	75	61	2,194	load
others	71	66	74	63	53	43	52	53	55	43	42	43	45	46	65	55	45	42	44	62	51	64	109	52	1,338	others
substance, material	90	61	43	50	68	50	39	51	39	44	36	28	41	54	39	41	40	38	25	56	35	35	22	45	1,070	substance, material
environment	22	55	41	20	31	34	29	39	17	20	17	22	188	32	33	43	29	33	37	30	37	38	29	25	901	environment
total	1,534	1,622	1,577	1,473	1,407	1,348	1,330	1,295	1,275	1,199	1,098	1,099	1,210	1,080	998	1,040	1,051	1,014	971	935	958	1,000	1,014	934	28,462	total

Transition of Causal agents (Middle) of fatal and non-fatal accidents in 010102 fishery products in Japan (1999-2022)

Causal (M) agents	1999	2000	2001	2002	2003	2004	2005	2006	2007	2008	2009	2010	2011	2012	2013	2014	2015	2016	2017	2018	2019	2020	2021	2022	total	Causal (M) agents
temporary buildings, establishments	332	357	356	363	329	303	315	356	308	303	302	294	268	268	233	287	259	244	265	266	260	277	258	279	7,082	temporary buildings, establishments
general machine	386	400	373	327	360	355	321	291	299	286	273	255	265	264	210	234	241	233	221	170	210	218	205	170	6,567	general machine
conveying machine	131	128	151	152	127	125	112	111	109	117	98	107	96	104	95	84	101	94	91	87	94	77	86	87	2,564	conveying machine
human power machine, tools	149	171	150	166	161	130	125	109	129	120	89	86	99	77	117	109	95	86	70	85	84	77	84	79	2,647	human power machine, tools

tools	119	123	116	98	99	115	120	100	106	87	75	100	84	84	71	69	96	97	87	53	72	69	89	72	2,201	tools
load	120	133	158	128	98	104	118	109	112	93	86	94	61	87	69	69	69	87	62	69	54	78	75	61	2,194	load
no causal agent	34	35	46	33	29	25	28	30	36	31	31	34	26	37	46	28	30	24	29	45	41	36	33	40	807	no causal agent
other equipments, facilities	41	41	46	45	32	44	45	33	48	37	32	28	31	26	29	25	31	33	37	25	31	34	26	38	838	other equipments, facilities
materials	80	55	36	35	49	40	32	42	30	35	28	18	28	40	26	20	28	33	19	48	28	22	18	35	825	materials
natural environment	22	55	41	20	31	34	29	39	17	20	17	22	188	32	33	43	29	33	37	30	37	38	29	25	901	natural environment
other causal agent	32	28	22	28	22	16	21	22	17	10	8	9	18	7	18	25	14	15	13	9	9	28	75	10	476	other causal agent
vehicle	30	36	24	29	19	21	18	15	20	20	23	14	9	8	14	3	20	7	8	8	7	14	11	10	388	vehicle
hazards, harmful substances	10	6	7	15	19	10	7	9	9	9	8	10	13	14	13	21	12	5	6	8	7	13	4	10	245	hazards, harmful substances
kiln, caldron	1	3	3	4	4	3	7	2	4	4		3	2	8	4	3	3		5	4	5	4	4	7	87	kiln, caldron
power transmission mechanism	15	18	12	7	11	7	10	7	9	9	9	11	6	8	9	6	15	9	12	9	7	6	4	6	222	power transmission mechanism
crane	8	6	9	13	7	4	6	7	7	7	9	4	3	4	4	8	1	5	4	5	3	3	4	2	133	crane
unclassifiable	5	3	6	2	2	2	3	1	2	2	3		1	2	1	2	1	3	2	8	1		1	2	55	unclassifiable
woodworking machine	4	10	6	2	3	4	5	5	4	2	2	1	1	2	1	1	1		1		3	1	3	1	63	woodworking machine
metal manufacturing machine	10	10	6	2	1	4	6	3	2	1	1	3	7	4	3	2	2	1	1	5	2		4		80	metal manufacturing machine

hand tool			100		98		66	64	69	77	50	47	51	44	78	64	43	47	40	36	47	37	42	40	1,140	hand tool
no causal agent			46		29		28	30	36	31	31	34	26	37	46	28	30	24	29	45	41	36	33	40	680	no causal agent
other equipment, facilities			46		32		45	33	48	37	32	28	31	26	29	25	31	33	37	25	31	34	26	38	667	other equipment, facilities
human power hauling equipment			49		62		59	43	57	40	38	37	47	33	38	44	50	39	29	49	32	35	35	35	851	human power hauling equipment
stairs, landing stage			30		35		33	46	42	30	27	24	25	26	25	27	28	31	36	34	35	42	32	34	642	stairs, landing stage
other general power machines			66		63		44	58	57	57	64	53	65	44	27	49	50	51	39	45	37	47	36	33	985	other general power machines
other materials			24		23		18	27	18	28	17	14	17	27	19	10	22	24	16	37	23	14	11	25	414	other materials
ladder			25		27		32	22	27	20	25	32	22	24	13	12	24	22	17	10	20	15	27	24	440	ladder
building, establishment			31		29		28	62	46	34	26	38	17	24	25	34	22	22	25	18	17	27	17	22	564	building, establishment
forklift			59		53		39	42	33	43	36	49	40	38	24	26	26	33	37	30	38	33	26	20	725	forklift
other environments			28		22		23	25	14	14	10	13	15	28	26	33	23	26	28	17	22	24	16	20	427	other environments
truck			32		19		17	23	19	20	9	16	11	19	22	18	19	16	11	6	15	13	14	20	339	truck
other temporary buildings, establishments			18		27		18	23	20	23	18	13	18	15	5	23	12	17	13	8	26	15	16	13	341	other temporary buildings, establishments
other causal agent			22		22		21	22	17	10	8	9	18	7	18	25	14	15	13	9	9	28	75	10	372	other causal agent
cars, bus, motorcycle			24		14		17	10	17	18	16	12	7	6	12	2	16	6	7	7	6	13	9	8	227	cars, bus, motorcycle
metal material			6		17		9	9	7	5	7	3	8	10	5	5	4	7	2	11	3	4	3	8	133	metal material
other hazards, harmful substances			5		9		3	2	5	4	5	3	8	6	6	9	9	5	5	5	4	6	4	7	110	other hazards, harmful substances
power transmission			12		11		10	7	9	9	9	11	6	8	9	6	15	9	12	9	7	6	4	6	175	power transmission

mechanism																										mechanism
kiln, caldron			2		2		7	1	4	1		3	1	6	4	1	2		3	2	4	4	4	5	56	kiln, caldron
high/cold temperature environment			9		6		3	6	2	2	3	9	3	3	3	8	4	5	6	7	13	9	10	4	115	high/cold temperature environment
roll machine (except printingroll machine)			5		4		8	5	4	3	13	7	6	9	4	3	3	3	6	5	6	7	3	4	108	roll machine (except printingroll machine)
other powered conveying machines			1		3		3	1	4	1	2	1	2	4	2	1	4	2	2	2	1	2	1	4	43	other powered conveying machines
harmful substance			2		6		4	5	4	5	3	6	5	7	6	11	3		1	2	3	7		3	83	harmful substance
mixer, grinder			3		2		1	3	8	8	5	3	2	6	6	6	3	4	5	1	2		4	3	75	mixer, grinder
human power cranes																			1		4	4	7	3	19	human power cranes
other vehicles					5		1	5	3	2	7	2	2	2	2	1	4	1	1	1	1	1	2	2	45	other vehicles
unclassifiable			6		2		3	1	2	2	3		1	2	1	2	1	3	2	8	1		1	2	43	unclassifiable
opening			2		2		2	2	3	3	2	1		3	1	3	2	2		1		1	2	2	34	opening
other powered crane					3		2	1	1	1	1		1	2		2				1	2	1	2	2	22	other powered crane
industrial dryer			1		1			1		3			1	2		2	1		2	2				2	18	industrial dryer
water			2		2		3	3	1	2	3		168		3	1	2	2	3	3		5	3	1	207	water
lumber, bamboo			4		6		4	6	4	2	2	1	3	2	2	4	2	2	1		1	4	3	1	54	lumber, bamboo
roof, beam, haze, crossbeam, principal rafter			3		1		4		2	5		2	2	2	1	1	1	1	1	1		1	2	1	31	roof, beam, haze, crossbeam, principal rafter
human power			1		1			2	3	3	1	2	1		1	1	2				1	1		1	21	human power

machine																									machine	
band sawing machine			4		1		3	2	2	1				2	1				1		1	1		1	20	band sawing machine
stone, sand, substance			2		3		1		1		2		1		1				1		1	1		1	14	stone, sand, substance
printing machine			1							1	1							1	1				1	7	printing machine	
injection molding machine			1				1		1										2				1	6	injection molding machine	
machine/equipment as load			10		4		6	7	5		4	3	1	2	3	3	2	7	1	4	3	6	4		75	machine/equipment as load
elevator, lift			6		4		4	6	5	6	4	4	2	1	3	4	1	2	3	2		1	1		59	elevator, lift
grinding machine, buffing machine					1		1					2	4	3	1	1	1		1	4	2		4		25	grinding machine, buffing machine
other metal manufacturing machines			5				4	3	2	1	1	1	2	1	1	1	1								23	other metal manufacturing machines
scaffolding			3		2			2	1			2		2	1			1			1		3		18	scaffolding
circular sawing machine			1		1		2	3	2	1	1	1	1			1	1				1		1		17	circular sawing machine
transmission			2				2			2	1	1	2	1			1	1			2	2			17	transmission
crane			3								4			1	1	2		2			1	1			15	crane
pressure vessel			2		1		1	1		3	1	1	1	2			1		1						15	pressure vessel
slinging tool			1		1						1	1				1		1	2			1	2		11	slinging tool
natural ground, rock			1		1			3		1						1				3	1				11	natural ground, rock
engine			3		1				1		1	1					1	1			1				10	engine

total	1,534	1,622	1,577	1,473	1,407	1,348	1,330	1,295	1,275	1,199	1,098	1,099	1,210	1,080	998	1,040	1,051	1,014	971	935	958	1,000	1,014	934	28,462	total
-------	-------	-------	-------	-------	-------	-------	-------	-------	-------	-------	-------	-------	-------	-------	-----	-------	-------	-------	-----	-----	-----	-------	-------	-----	--------	-------

Transition of workers' age groups of fatal and non-fatal accidents in 010102 fishery products in Japan (1999-2022)

Age	1999	2000	2001	2002	2003	2004	2005	2006	2007	2008	2009	2010	2011	2012	2013	2014	2015	2016	2017	2018	2019	2020	2021	2022	total	Age
60 years old or more	319	312	300	314	281	280	289	272	278	254	264	290	299	234	282	289	295	271	273	318	299	326	325	291	6,955	60 years old or more
50-59	492	559	591	514	459	433	469	458	440	383	355	327	338	299	254	230	250	261	218	202	227	215	219	225	8,418	50-59
40-49	324	315	284	255	247	244	220	193	203	208	187	166	214	191	168	207	179	202	183	159	150	158	147	160	4,964	40-49
20-29	158	214	180	185	184	195	172	155	183	196	145	144	151	165	118	130	148	126	124	120	116	152	168	127	3,756	20-29
30-39	189	175	177	171	188	165	152	197	150	136	134	152	184	167	152	164	152	129	148	116	143	133	141	111	3,726	30-39
19 years old or less	52	47	45	34	48	31	28	20	21	22	13	20	24	24	24	20	27	25	25	20	23	16	14	20	643	19 years old or less
total	1,534	1,622	1,577	1,473	1,407	1,348	1,330	1,295	1,275	1,199	1,098	1,099	1,210	1,080	998	1,040	1,051	1,014	971	935	958	1,000	1,014	934	28,462	total

Transition of workers' number of workplace of fatal and non-fatal accidents in 010102 fishery products in Japan (1999-2022)

Workers scale	1999	2000	2001	2002	2003	2004	2005	2006	2007	2008	2009	2010	2011	2012	2013	2014	2015	2016	2017	2018	2019	2020	2021	2022	total	Workers scale
100-299	261	270	241	209	220	231	254	244	270	248	216	217	229	221	213	215	225	224	209	220	199	228	229	235	5,528	100-299
50-99	313	339	335	295	260	285	284	308	275	270	266	293	262	276	270	227	260	269	261	241	255	238	273	227	6,582	50-99
30-49	320	354	287	312	292	255	263	237	254	231	207	196	251	203	182	214	200	195	180	179	172	223	187	201	5,595	30-49
10-29	430	448	467	425	394	388	370	323	342	303	284	270	314	272	228	252	258	233	224	196	218	218	231	193	7,281	10-29
9 workers or less	177	186	203	189	194	159	136	155	115	114	97	98	119	92	80	94	84	71	70	70	61	59	55	53	2,731	9 workers or less
300 workers or more	33	25	44	43	47	30	23	28	19	33	28	25	35	16	25	38	24	22	27	29	53	34	39	25	745	300 workers or more
total	1,534	1,622	1,577	1,473	1,407	1,348	1,330	1,295	1,275	1,199	1,098	1,099	1,210	1,080	998	1,040	1,051	1,014	971	935	958	1,000	1,014	934	28,462	total

Transition of occurred months of fatal and non-fatal accidents in 010102 fishery products in Japan (1999-2022)

Month	1999	2000	2001	2002	2003	2004	2005	2006	2007	2008	2009	2010	2011	2012	2013	2014	2015	2016	2017	2018	2019	2020	2021	2022	total	Month
-------	------	------	------	------	------	------	------	------	------	------	------	------	------	------	------	------	------	------	------	------	------	------	------	------	-------	-------

December	105	127	126	113	125	101	104	117	105	136	83	77	98	85	88	80	86	87	69	69	86	114	90	95	2,366	December
September	141	150	139	131	128	117	135	106	106	101	97	93	94	85	82	84	82	77	83	74	75	78	87	82	2,427	September
July	141	165	146	132	115	119	110	94	111	108	107	102	78	85	86	79	100	96	83	80	83	70	98	81	2,469	July
June	131	133	140	103	134	123	103	104	98	88	98	100	92	87	81	83	96	85	87	88	85	82	74	81	2,376	June
March	134	129	141	118	107	110	119	110	95	83	97	83	254	91	71	99	86	90	99	85	93	77	78	79	2,528	March
April	117	115	136	136	101	95	86	88	115	92	98	90	91	90	85	91	76	81	86	61	84	82	82	79	2,257	April
November	119	142	133	131	130	118	110	120	116	105	85	95	104	84	99	80	91	75	81	78	63	89	93	78	2,419	November
May	141	128	120	98	116	124	104	115	103	111	83	91	66	86	76	94	82	88	73	78	69	73	101	77	2,297	May
January	107	114	118	121	91	107	105	108	79	74	85	92	77	98	77	77	88	77	75	92	78	84	81	75	2,180	January
October	140	162	140	149	124	140	129	124	138	122	95	97	99	95	100	98	101	86	82	79	85	97	85	70	2,637	October
February	126	133	118	105	106	86	114	101	97	94	75	89	58	99	58	98	69	90	79	73	74	65	49	69	2,125	February
August	132	124	120	136	130	108	111	108	112	85	95	90	99	95	95	77	94	82	74	78	83	89	96	68	2,381	August
total	1,534	1,622	1,577	1,473	1,407	1,348	1,330	1,295	1,275	1,199	1,098	1,099	1,210	1,080	998	1,040	1,051	1,014	971	935	958	1,000	1,014	934	28,462	total

Transition of prefectures of fatal and non-fatal accidents in 010102 fishery products in Japan (1999-2022)

Prefecture	1999	2000	2001	2002	2003	2004	2005	2006	2007	2008	2009	2010	2011	2012	2013	2014	2015	2016	2017	2018	2019	2020	2021	2022	total	Prefecture
Hokkaido	330	379	347		313		283	304	288	244	247	227	215	227	235	216	215	208	173	196	165	175	200	166	5,353	Hokkaido
Shizuoka	136	140	133		177		146	132	128	129	115	147	131	119	115	116	124	126	139	105	133	139	141	115	2,886	Shizuoka
Miyagi	144	147	144		109		105	100	102	130	76	95	173	77	66	75	64	86	69	67	78	72	86	65	2,130	Miyagi
Kagoshima	54	69	55		42		51	50	32	36	27	34	40	33	28	37	29	40	32	27	29	42	27	41	855	Kagoshima
Yamaguchi	59	57	57		55		44	46	44	27	36	25	26	37	25	28	33	28	29	21	27	39	22	38	803	Yamaguchi
Chiba	78	66	68		35		32	45	41	48	55	43	30	38	35	40	46	47	35	46	31	41	34	37	971	Chiba
Fukuoka	51	55	50		37		43	53	49	41	35	46	42	49	41	40	44	45	43	36	37	39	33	37	946	Fukuoka
Hiroshima	22	26	32		37		24	31	25	19	25	12	25	22	18	34	23	21	21	31	22	24	36	31	561	Hiroshima
Tottori	25	32	29		27		30	22	24	21	24	18	19	18	18	22	16	15	10	17	19	20	20	30	476	Tottori

Nagasaki	29	30	30		28		24	24	32	26	27	35	39	28	30	33	27	29	23	28	30	24	20	29	625	Nagasaki
Aichi	39	23	43		27		26	24	28	23	25	23	29	21	26	17	19	14	26	20	20	14	31	28	546	Aichi
Hyogo	35	58	47		45		38	35	27	40	30	35	21	22	26	27	23	33	21	20	26	32	24	24	689	Hyogo
Mie	53	50	42		50		34	17	39	31	26	26	30	18	24	14	26	21	25	23	22	16	13	24	624	Mie
Aomori	40	49	53		49		49	41	51	42	36	43	47	49	40	49	46	44	27	29	32	47	41	23	927	Aomori
Ibaraki	34	34	30		25		35	30	30	21	33	29	17	28	16	20	17	20	22	23	23	18	17	19	541	Ibaraki
Niigata	15	13	22		26		19	22	19	18	16	25	24	22	11	18	19	12	19	16	21	21	22	19	419	Niigata
Miyazaki	17	17	13		12		16	13	7	4	8	16	12	15	9	9	9	15	7	8	10	8	9	19	253	Miyazaki
Ehime	39	33	29		31		37	31	28	39	12	24	17	24	11	27	18	27	16	19	23	23	23	18	549	Ehime
Iwate	48	63	61		22		36	45	27	32	34	27	43	22	17	33	31	23	21	33	26	25	25	17	711	Iwate
Kanagawa	30	19	23		20		35	28	25	22	17	14	14	16	18	13	20	12	21	8	19	14	14	15	417	Kanagawa
Osaka	23	13	19		16		17	15	18	24	21	13	27	16	28	21	36	23	24	20	17	18	15	14	438	Osaka
Fukushima	27	24	24		26		26	24	18	21	20	14	30	12	11	12	23	10	16	9	14	13	10	13	397	Fukushima
Saga	12	20	19		11		22	9	21	19	15	9	16	15	25	18	12	12	30	18	23	19	14	13	372	Saga
Kumamoto	20	29	21		27		18	30	35	27	22	15	14	15	19	12	19	14	12	13	9	11	13	10	405	Kumamoto
Saitama	4	4	10		10		7	4	8	11	11	7	12	10	4	9	11	14	6	11	10	12	12	8	195	Saitama
Kochi	11	25	15		15		16	15	9	12	14	13	11	12	8	9	16	7	14	9	5	9	9	7	261	Kochi
Shimane	18	19	18		13		16	8	12	11	7	2	9	8	4	9	6	7	10	6	10	10	12	7	222	Shimane
Okayama	7	10	4		4		9	11	9	4	3	3	5	4	6	3	3	2	6	5	4	9	7	7	125	Okayama
Kagawa	16	20	13		11		22	14	7	8	10	13	9	9	10	11	8	4	5	5	5	5	10	6	221	Kagawa
Toyama	11	10	15		10		7	4	8	8	3	4	15	7	6	7	5	2	4	5	5	4	5	6	151	Toyama
Oita	23	14	15		21		5	8	13	7	7	13	7	8	10	9	14	6	13	10	3	7	2	5	220	Oita
Wakayama	14	13	14		16		11	11	13	11	6	10	9	9	3	9	4	5	7	4	9	6	4	5	193	Wakayama
Shiga	4	2	6		7		1		2	3	2	5	2	9	7	3	4	2	4	4	5	1	4	5	82	Shiga
Tokushima	4	9	9		4		6	10	13	7	6	3	5	4	7	4	6	5	4	7	4	5	9	4	135	Tokushima

Ishikawa	9	7	8		9		5	7	9	7	10	8	6	10	9	9	8	4	5	2	6	4	22	3	167	Ishikawa
Tokyo	24	11	14		9		11	4	9	8	11	5	9	4	6	3	4	3	2	2	11	8	4	3	165	Tokyo
Kyoto	5	6	11		4		7	6	4	3	6	5	4	9	6	4	5	6	6	1	5	5	3	3	114	Kyoto
Gifu	3	3	9		4		1	2	1	3	2	2	1	1	4	1	4	4	2	5	2	2	2	3	61	Gifu
Okinawa	4	2	1		4			2	2	1	1	4	3	9	3	2	2	5	4	2	3	4		3	61	Okinawa
Yamagata	1		5				1	3	1	1	1		2	2	3	4	4		1	1	5	3	2	3	43	Yamagata
Yamanashi	1	3	5		2			1					3	3						2	1	1	1	3	26	Yamanashi
Fukui	6	10	4		3		6	5	3	2	4	1	5	4	4	7	2	4	8	8	4	6	6	2	104	Fukui
Gunma	1	5	4		7		3	3	8	3	4	1	5	10	3	2	3	4	5	10	3	2	4	2	92	Gunma
Akita	2	1	3		1		1	2	1	4	2	1	3	2	1	1	1	2	2	1	1		2	2	36	Akita
Tochigi	3	2	1		2			1	4	1	2	1	3	2		1	1	1			1	1	3	1	31	Tochigi
Nagano	1		2		4		3	1	1		3	3	1	1	1	2	1	2	2	1		1		1	31	Nagano
Nara	2						2	2			1				1					1		1	1		11	Nara
total	1,534	1,622	1,577	1,473	1,407	1,348	1,330	1,295	1,275	1,199	1,098	1,099	1,210	1,080	998	1,040	1,051	1,014	971	935	958	1,000	1,014	934	28,462	total

Data Source : <https://anzeninfo.mhlw.go.jp/user/anzen/tok/anst00.html> MHLW, Jaan

Return to https://www.jisha.or.jp/english/statistics/202312_05.html