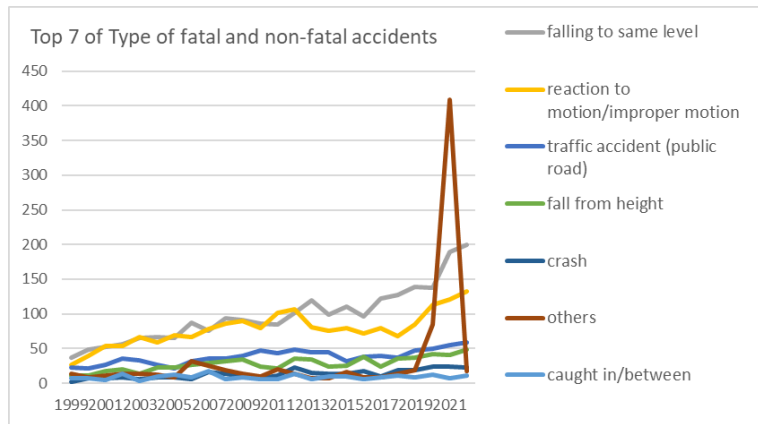
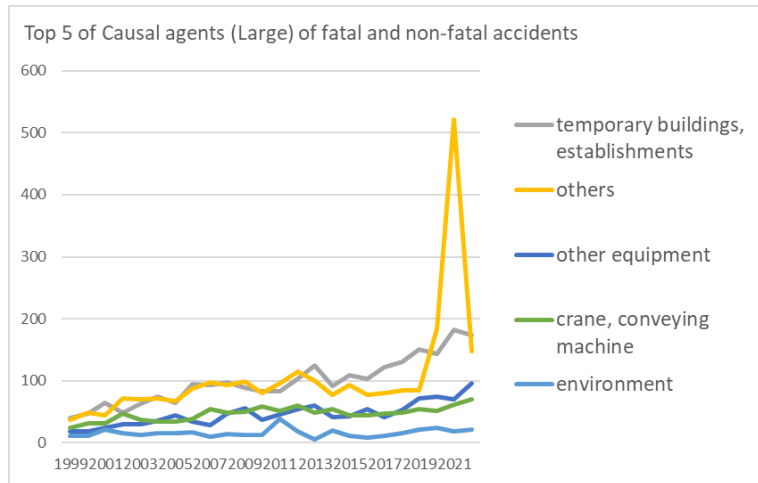


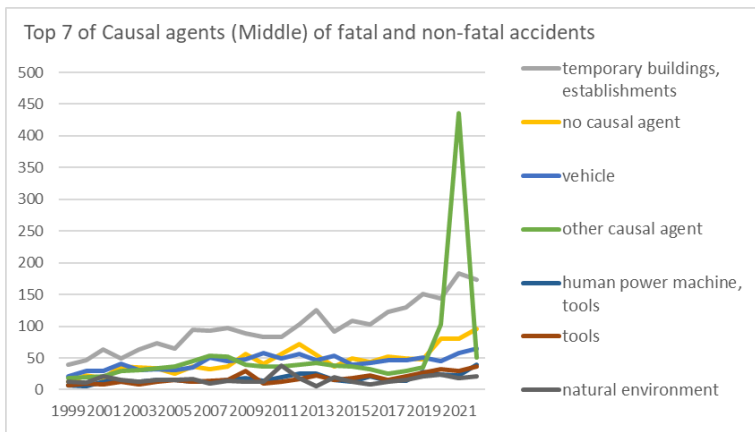
Transition of fatal and non-fatal accidents in 130109 other medical treatment service in Japan (1999-2022)



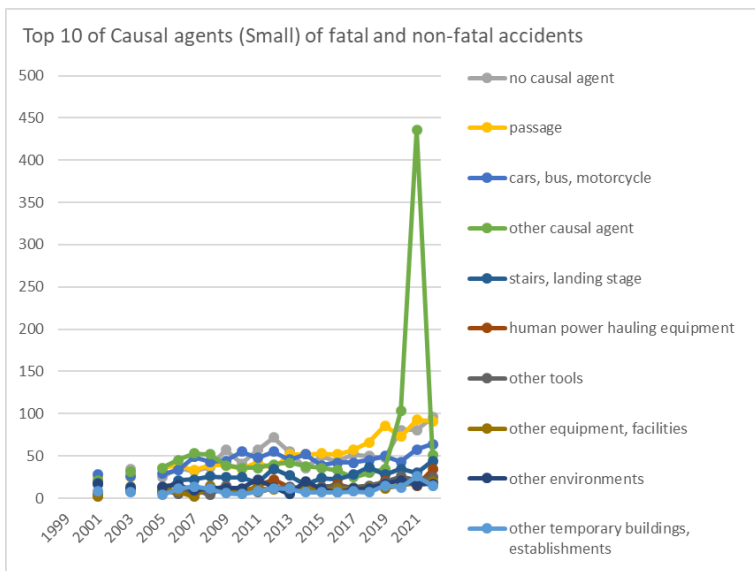
Transition of Top 7 of Type of fatal and non-fatal accidents in 130109 other medical treatment service in Japan (1999-2022)



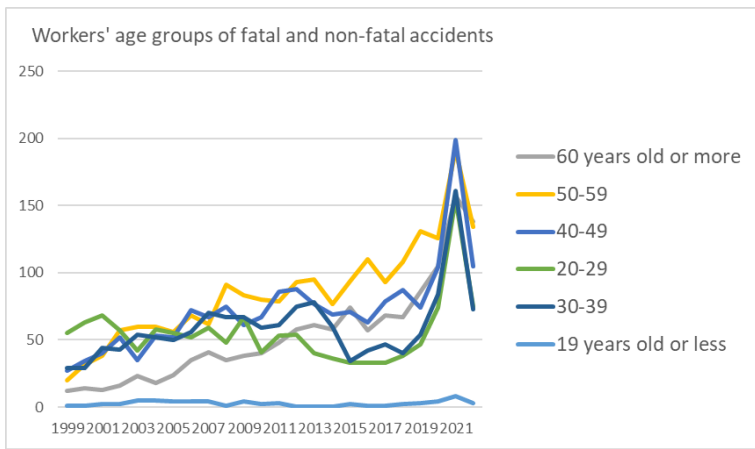
Transition of Top 5 of Causal agents (Large) of fatal and non-fatal accidents in 130109 other medical treatment service in Japan (1999-2022)



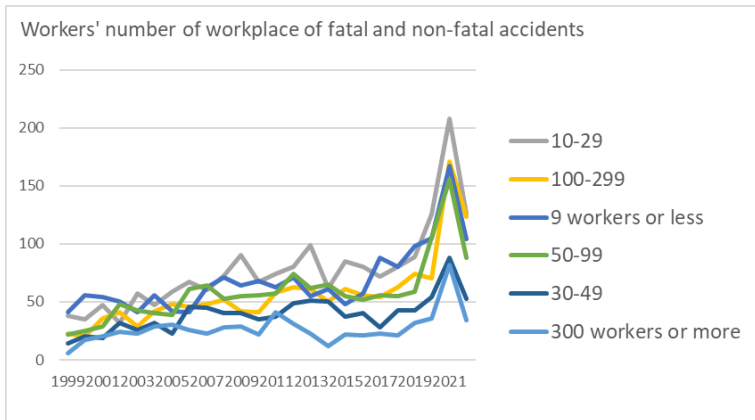
Transition of Top 7 of Causal agents (Middle) of fatal and non-fatal accidents in 130109 other medical treatment service in Japan (1999-2022)



Transition of Top 10 of Causal agents (Small) of fatal and non-fatal accidents in 130109 other medical treatment service in Japan (1999-2022)



Transition of workers' age groups of fatal and non-fatal accidents in 130109 other medical treatment service in Japan (1999-2022)



Transition of workers' number of workplace of fatal and non-fatal accidents in 130109 other medical treatment service in Japan (1999-2022)





the foot					1			1	1					3			2								8	of the foot
burst	1				1												1			1					4	burst
electric shock			1											1					1						3	electric shock
explosion		1													1										2	explosion
fire				1								1													2	fire
total	144	173	205	227	219	246	241	287	303	317	320	289	330	368	351	300	308	306	321	342	395	497	872	528	7,889	total

Transition of Causal agents (Large) of fatal and non-fatal accidents in 130109 other medical treatment service in Japan (1999-2022)

Causal (L) agents	1999	2000	2001	2002	2003	2004	2005	2006	2007	2008	2009	2010	2011	2012	2013	2014	2015	2016	2017	2018	2019	2020	2021	2022	total	Causal (L) agents
temporary buildings, establishments	40	47	64	49	63	74	65	95	93	97	89	83	83	103	125	92	109	103	122	130	151	144	183	173	2,377	temporary buildings, establishments
others	37	49	45	71	70	72	67	88	97	93	99	81	96	115	101	78	93	78	81	85	85	184	521	148	2,534	others
other equipment	18	18	25	30	30	36	44	34	28	47	56	37	46	54	60	42	43	54	42	53	72	74	70	96	1,109	other equipment
crane, conveying machine	25	31	32	47	37	35	34	39	55	48	50	59	51	60	48	55	44	45	47	48	54	51	62	70	1,127	crane, conveying machine
environment	12	11	21	16	13	16	16	17	10	14	13	13	38	18	6	20	12	8	12	15	21	24	18	21	385	environment
load	5	10	7	4	5	4	10	7	10	10	5	8	7	7	5	5	2	9	8	5	7	11	13	12	176	load
substance, material	2	6	8	5	1	6	4	4	8	3	3	5	7	6	6	7	3	8	6	4	4	1	3	6	116	substance, material
machine	5	1	3	5		3	1	3	2	5	5	3	2	5		1	2	1	3	2	1	8	2	2	65	machine

total	144	173	205	227	219	246	241	287	303	317	320	289	330	368	351	300	308	306	321	342	395	497	872	528	7,889	total
-------	-----	-----	-----	-----	-----	-----	-----	-----	-----	-----	-----	-----	-----	-----	-----	-----	-----	-----	-----	-----	-----	-----	-----	-----	-------	-------

Transition of Causal agents (Middle) of fatal and non-fatal accidents in 130109 other medical treatment service in Japan (1999-2022)

Causal (M) agents	1999	2000	2001	2002	2003	2004	2005	2006	2007	2008	2009	2010	2011	2012	2013	2014	2015	2016	2017	2018	2019	2020	2021	2022	total	Causal (M) agents
temporary buildings, establishments	40	47	64	49	63	74	65	95	93	97	89	83	83	103	125	92	109	103	122	130	151	144	183	173	2,377	temporary buildings, establishments
no causal agent	12	23	19	36	35	34	25	36	32	37	57	41	57	72	55	36	50	43	52	50	48	81	81	96	1,108	no causal agent
vehicle	21	29	30	41	31	33	31	35	51	45	48	58	50	56	46	53	40	42	46	46	51	45	58	65	1,051	vehicle
other causal agent	19	20	21	29	31	34	36	45	53	52	39	36	36	40	42	38	36	33	25	30	35	103	436	51	1,320	other causal agent
human power machine, tools	7	6	12	14	13	15	15	13	12	16	18	14	20	25	26	15	12	21	14	14	28	24	22	40	416	human power machine, tools
tools	7	10	8	13	8	13	15	12	14	16	29	10	12	17	22	15	19	22	16	21	27	33	29	36	424	tools
natural environment	12	11	21	16	13	16	16	17	10	14	13	13	38	18	6	20	12	8	12	15	21	24	18	21	385	natural environment
other equipments, facilities	4	2	2	3	8	8	12	8	2	15	8	10	12	10	11	12	11	11	11	13	12	15	18	20	238	other equipments, facilities
load	5	10	7	4	5	4	10	7	10	10	5	8	7	7	5	5	2	9	8	5	7	11	13	12	176	load
conveying machine	4	2	2	4	6	2	3	4	2	3	2	1	1	3	2	2	3	3	1	2	3	6	3	4	68	conveying machine
materials	2	4	3	3	1	6	3	4	8	2	1	4	5	5	4	3	3	3	3	3	1	1	1	3	76	materials

hazards, harmful substances		2	5	2			1			1	2	1	2	1	2	4		5	3	1	3		2	3	40	hazards, harmful substances	
unclassifiable	6	6	5	6	4	4	6	7	12	4	3	4	3	3	4	4	7	2	4	5	2		4	1	106	unclassifiable	
crane				2					2					1			1						1	1	8	crane	
metal manufacturing machine	1		1								1	1								1			1		1	7	metal manufacturing machine
engine																									1	1	engine
general machine	4	1	2	4		3	1	3	1	4	3	3	1	5		1	2	1	2		1	7	2		51	general machine	
electric equipment			1					1			1	1		1	1		1		1	4	2	1	1		16	electric equipment	
pressure vessel							2					2	1	1						1	3	1			11	pressure vessel	
woodworking machine				1					1		1														4	woodworking machine	
kiln, caldron			2		1								1												4	kiln, caldron	
construction machine													1												2	construction machine	
power transmission mechanism																										power transmission mechanism	
mobile silviculture machine																										mobile silviculture machine	





load			7		4		9	7	9	10	5	8	6	6	5	4	2	8	7	5	7	11	13	11	144	load	
ladder			5				4	7	3	12	14	3	5	5	8	5	5	8	3	6	7	7	8	11	126	ladder	
building, establishment			4		12		10	9	16	7	8	11	8	13	18	5	16	8	15	9	9	11	18	9	216	building, establishment	
hand tool			7		5		6	4	6	6	4	7	3	3	13	3	1	4	3	3	6	3	5	6	98	hand tool	
truck			2		6		3	4		3	2	1	1	2	2	2	3	3	1	1	3	5	2	4	50	truck	
high/cold temperature environment			2		1				1			1		1	1					1	1			3	12	high/cold temperature environment	
other materials					1		2	1	6	2	1	2	1	2	1	2	3	1	1	2	1	1		2	32	other materials	
inflammable gas															1		1							2	4	inflammable gas	
unclassifiable			5		4		6	7	12	4	3	4	3	3	4	4	7	2	4	5	2		4	1	84	unclassifiable	
other vehicles			2		5		2	2	2	2	4	3	2	1		1	1		4	1	1	2		1	36	other vehicles	
other hazards, harmful substances			1				1				2		1	1		2		3	2	1	2		1	1	18	other hazards, harmful substances	
machine/equipment as load					1		1		1				1	1		1		1	1					1	9	machine/equipment as load	
elevator, lift									1					1			1							1	1	5	elevator, lift
lumber, bamboo							1						1		1					1				1	5	lumber, bamboo	
standing tree							1							1			1					1		1	5	standing tree	
grinding machine, buffing machine											1													1	2	grinding machine, buffing machine	
engine																								1	1	engine	
water								1		2				15	2						1	2	2		25	water	

other general power machines			1					2	1		2	2		4			1	1	2		1	6	1		24	other general power machines
metal material			3					3				1	3	1	1	1		2	2				1		18	metal material
food manufacturing machine			1					1	1		3	1	1	1	1		1	1					1	1	14	food manufacturing machine
natural ground, rock			1		1			1				1	1	1				1	1	1	1		2		12	natural ground, rock
transmission								1				1				1			3	2	1				10	transmission
harmful substance			4							1		1	1		1	1					1				10	harmful substance
opening			2								1			1		1					2	1			8	opening
other pressure vessels								2					1	1	1						1	1			7	other pressure vessels
other electrical equipment			1										1						1	1			1		6	other electrical equipment
stone, sand, substance									2				1		2	1									6	stone, sand, substance
other powered conveying machines									1											1		1	1		4	other powered conveying machines
pressure vessel												1								1	2				4	pressure vessel
kiln, caldron			2		1								1												4	kiln, caldron
human power machine													3										1		4	human power machine
other metal manufacturing machines			1								1											1			3	other metal manufacturing machines









total	144	173	205	227	219	246	241	287	303	317	320	289	330	368	351	300	308	306	321	342	395	497	872	528	7,889	total
-------	-----	-----	-----	-----	-----	-----	-----	-----	-----	-----	-----	-----	-----	-----	-----	-----	-----	-----	-----	-----	-----	-----	-----	-----	-------	-------

Transition of workers' age groups of fatal and non-fatal accidents in 130109 other medical treatment service in Japan (1999-2022)

Age	1999	2000	2001	2002	2003	2004	2005	2006	2007	2008	2009	2010	2011	2012	2013	2014	2015	2016	2017	2018	2019	2020	2021	2022	total	Age
60 years old or more	12	14	13	16	23	18	24	35	41	35	38	40	48	58	61	58	74	57	68	67	86	105	157	138	1,286	60 years old or more
50-59	20	32	38	57	60	60	56	68	62	91	83	80	79	93	95	77	94	110	93	108	131	126	192	134	2,039	50-59
40-49	27	34	40	52	35	53	52	72	67	75	61	67	86	88	77	69	71	63	79	87	74	104	199	105	1,737	40-49
20-29	55	63	68	57	42	58	55	52	59	48	67	41	53	54	40	36	33	33	33	38	47	74	155	75	1,336	20-29
30-39	29	29	44	43	54	52	50	56	70	67	67	59	61	75	78	60	34	42	47	40	54	84	161	73	1,429	30-39
19 years old or less	1	1	2	2	5	5	4	4	4	1	4	2	3				2	1	1	2	3	4	8	3	62	19 years old or less
total	144	173	205	227	219	246	241	287	303	317	320	289	330	368	351	300	308	306	321	342	395	497	872	528	7,889	total

Transition of workers' number of workplace of fatal and non-fatal accidents in 130109 other medical treatment service in Japan (1999-2022)

Workers scale	1999	2000	2001	2002	2003	2004	2005	2006	2007	2008	2009	2010	2011	2012	2013	2014	2015	2016	2017	2018	2019	2020	2021	2022	total	Workers scale
10-29	38	35	47	32	57	47	59	67	60	73	90	67	74	80	99	62	85	80	72	80	89	126	208	126	1,853	10-29
100-299	23	20	36	41	29	42	48	46	48	52	42	41	58	63	61	50	61	56	54	63	74	70	171	123	1,372	100-299
9 workers or less	41	56	54	50	41	56	42	41	63	71	64	68	63	71	55	61	48	57	88	80	98	105	167	104	1,644	9 workers or less
50-99	22	25	29	48	43	40	39	61	64	53	55	56	57	74	62	65	55	52	56	55	59	106	156	88	1,420	50-99
30-49	14	20	19	32	26	32	23	46	45	40	40	35	37	49	51	50	37	40	28	43	43	54	88	53	945	30-49
300 workers or more	6	17	20	24	23	29	30	26	23	28	29	22	41	31	23	12	22	21	23	21	32	36	82	34	655	300 workers or more
total	144	173	205	227	219	246	241	287	303	317	320	289	330	368	351	300	308	306	321	342	395	497	872	528	7,889	total



Transition of occurred months of fatal and non-fatal accidents in 130109 other medical treatment service in Japan (1999-2022)

Month	1999	2000	2001	2002	2003	2004	2005	2006	2007	2008	2009	2010	2011	2012	2013	2014	2015	2016	2017	2018	2019	2020	2021	2022	total	Month
January	8	16	14	16	21	22	25	24	25	28	52	25	26	38	41	35	20	20	25	30	36	29	134	61	771	January
October	8	11	19	19	17	20	16	26	26	40	26	23	24	32	37	31	17	18	33	34	37	31	45	50	640	October
June	17	12	25	16	15	31	23	29	30	33	24	24	32	24	24	23	31	38	25	21	39	40	41	47	664	June
September	13	14	14	14	20	15	20	20	33	31	20	26	43	30	33	21	23	17	25	27	33	54	62	47	655	September
May	10	15	12	27	19	19	15	23	24	32	23	29	21	29	25	25	29	29	26	33	30	37	70	47	649	May
August	20	15	15	17	15	16	19	22	22	21	18	29	35	35	19	27	30	31	31	28	39	41	113	46	704	August
July	16	17	17	22	22	23	13	28	24	28	36	26	17	30	24	30	34	29	24	37	37	49	44	44	671	July
November	11	12	17	25	19	13	20	15	19	15	16	16	22	30	31	12	20	26	16	24	33	55	38	43	548	November
December	6	19	11	12	16	22	17	42	18	19	15	14	20	21	25	19	24	14	22	21	26	52	48	40	543	December
February	14	10	18	12	19	16	24	19	31	30	28	24	16	38	31	31	26	21	34	27	27	39	81	37	653	February
April	11	15	25	23	21	17	27	14	26	21	37	24	26	28	27	19	30	27	21	29	26	40	142	36	712	April
March	10	17	18	24	15	32	22	25	25	19	25	29	48	33	34	27	24	36	39	31	32	30	54	30	679	March
total	144	173	205	227	219	246	241	287	303	317	320	289	330	368	351	300	308	306	321	342	395	497	872	528	7,889	total

Transition of prefectures of fatal and non-fatal accidents in 130109 other medical treatment service in Japan (1999-2022)

Prefecture	1999	2000	2001	2002	2003	2004	2005	2006	2007	2008	2009	2010	2011	2012	2013	2014	2015	2016	2017	2018	2019	2020	2021	2022	total	Prefecture
Kanagawa	12	9	22		12		13	27	8	22	22	27	28	32	27	27	16	25	24	23	34	41	128	66	645	Kanagawa
Osaka	5	16	17		24		19	38	23	46	48	35	27	39	54	35	49	47	41	55	50	41	94	65	868	Osaka
Tokyo	10	10	16		18		21	24	34	28	21	25	23	28	32	26	26	24	30	21	35	49	71	48	620	Tokyo
Fukuoka	9	11	16		11		18	12	13	16	20	17	9	10	10	14	17	13	24	14	31	38	60	35	418	Fukuoka
Aichi	5	10	4		7		12	14	10	13	10	12	10	13	17	8	12	22	13	24	14	25	41	28	324	Aichi
Saitama	4	5	15		12		8	31	29	30	21	21	34	37	34	18	13	14	11	16	16	26	77	25	497	Saitama

Hyogo	5	3	3		8		16	9	11	8	4	14	11	16	15	19	15	18	18	6	14	38	78	21	350	Hyogo
Kagoshima	4	2	1		8		1	3	6	6	7	3	3	13	6	6	20	19	17	15	18	22	36	20	236	Kagoshima
Nara			2		2		2	5	3	4		1		3	4	5	9	6	4	1	16	8	9	18	102	Nara
Shizuoka	5	2	7		6		5	3	5	5	5	8	9	8	13	7	4	8	19	11	9	25	10	17	191	Shizuoka
Hokkaido	8	15	19		9		18	8	19	8	11	5	14	9	11	8	6	10	11	8	13	19	18	13	260	Hokkaido
Kyoto	5	6	8		10		11	6	10	14	11	6	12	8	9	3	1	2	1	8	8	11	18	11	179	Kyoto
Miyagi	5	6	7		6		4	8	7	7	10	22	30	11	5	5	3	8	3	11	6	17	18	10	209	Miyagi
Saga	7	3	1		2		3	7	6	2	1	3	6	5	2	2	5	1	1	5	5	10	9	9	95	Saga
Fukushima	4	2	2		4		1	2	3	5	2	2	7	7	3	4	3	2	4	6	9	5	3	9	89	Fukushima
Gifu		1	3		1			4	2	3	5	2	5	7	5	2	4	8	5	4	3	6	6	9	85	Gifu
Tochigi		3	2					1	5	2	7	2	2	2	5	2	4	2	1	3	5	7	9	8	72	Tochigi
Iwate		2	2		2		1	2	3	4	2	3	6		5	3		1		2	6	3	3	8	58	Iwate
Chiba	1	1	4		9		8	7	6	4	10	2	16	13	7	7	13	8	8	14	18	8	15	7	186	Chiba
Kumamoto	6	10	6		8		2	3	9	10	8	14		4	3	6	8	6	5	4	11	7	6	7	143	Kumamoto
Ibaraki	1	2			3		3	5	1	9	5	6	8	6	7	9	6	5	6	11	11	8	9	7	128	Ibaraki
Yamaguchi	4	5	3		2		3	6	3	4	6	3	1	5	6	8	9	2	7	4	4	6	9	7	107	Yamaguchi
Niigata	2	3	3		4		2	5	3	4	5	1	4	4	4	1	5	4	2	5	5	4	7	7	84	Niigata
Okinawa	2	2	4		3		7	7	9	6	5	2	7	9	11	9	6	3	3	3	5	4	10	6	123	Okinawa
Gunma	1	1	2		2		3	2	3	3	2	5	6	8	5	12	3	3	8	3	4	5	24	6	111	Gunma
Miyazaki	5	1	2		7		3	2	9	2	1	3	4	5	5	8	9		6	3	6	4	9	6	100	Miyazaki
Okayama	1	7	3		4		5	4	6	2	7	4	8	7		2	4	2	1	4	2	6	6	5	90	Okayama
Yamanashi	1	3	2		6		2	1	4	1	8	3	2	1	4	2	1	2		3	2	2	5	5	60	Yamanashi
Wakayama		1	1		4		2	3	4		1	1	3	3	3	2	1	3	2	3	1	3	3	5	49	Wakayama

Aomori	1	1	4				1	1	3	7		1		3		1			1		1		5	30	Aomori	
Hiroshima	8	7	5		4		8	5	9	16	11	6	11	9	8	3	3	5	11	8	8	3	8	4	160	Hiroshima
Oita		3	2		1		4	2	3	2	5	1	1	2	1	2	2			2	2	3	12	4	54	Oita
Toyama					2		2	1		1	2	2	1	2	3	5	3	5	1	3	1	2	5	4	45	Toyama
Akita	1	2	1				2	4	1		4	2	2	2		2	3	1	3	4		3	2	4	43	Akita
Shiga		4	3		3		3	3	4	5	4	1	3	2	3	1	3	4	3	3	3	7	6	3	71	Shiga
Ehime		1			1		2	1	5	1	1	3	1	1	4	2	2		4	1	4	9	6	3	52	Ehime
Ishikawa		2					2		1	2		2	2		2	1	1	2	3	3	1	3	2	3	32	Ishikawa
Tokushima		1			6		1		2	1	5	6	2	5	6	2	3	3	1	7	4	6	7	2	70	Tokushima
Nagasaki	9	2	1		5		2	3	2	5	1	1	2	1	1	1	2	3	4	3	1	1	8	2	60	Nagasaki
Yamagata	3				1		3	4	1		4	2		4	2	2	2	1	2	5		2	2	2	42	Yamagata
Kochi	2	1	3				2	1	2		1			1		4	2	2	1	1		1	1	2	27	Kochi
Mie	1	2			2		3		6	2	4	4	1	12	3	3	3		2	3	2	1	9	1	64	Mie
Fukui			1				5	6	3	3	1		3	4	1	3	1		1		2		6	1	41	Fukui
Nagano	2	2	5				6	5	1	1	10	3	2	5	3	2	5	5	4	4	2	1	2		70	Nagano
Shimane	2	1	2					2	4	3	1	2	2	2	1	1		3	5	4	3	3	2		43	Shimane
Kagawa	2	1	1						1		1	1			1	3	1	3	1			3	3		22	Kagawa
Tottori	1	1					2		1				2			2		1			1				11	Tottori
total	144	173	205	227	219	246	241	287	303	317	320	289	330	368	351	300	308	306	321	342	395	497	872	528	7,889	total

Data Source : <https://anzeninfo.mhlw.go.jp/user/anzen/tok/anst00.html> MHLW, Jaan

Return to [https://www.jisha.or.jp/english/statistics/202312\\_05.html](https://www.jisha.or.jp/english/statistics/202312_05.html)