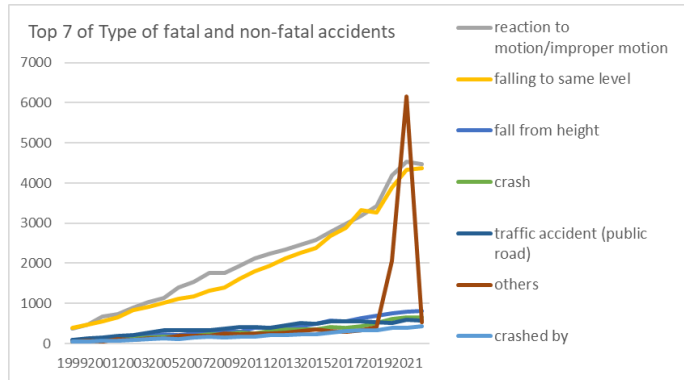
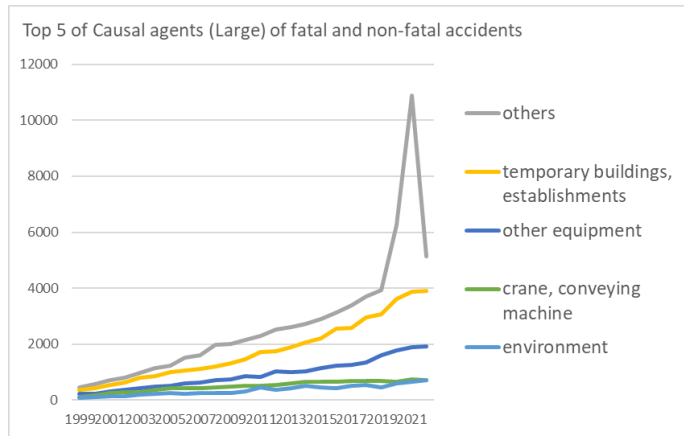


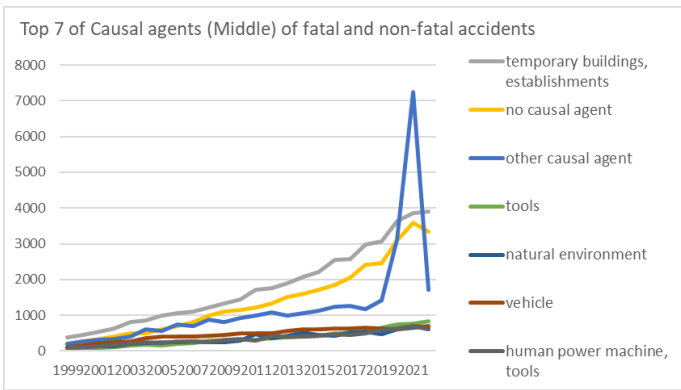
Transition of fatal and non-fatal accidents in 1302 social welfare facility in Japan (1999-2022)



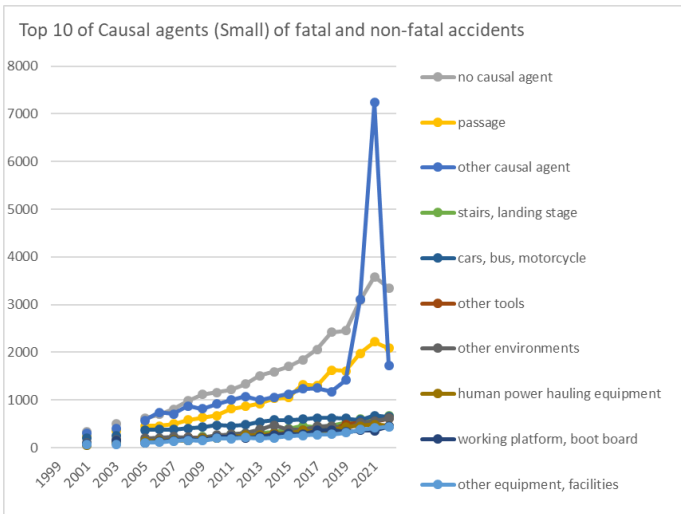
Transition of Top 7 of Type of fatal and non-fatal accidents in 1302 social welfare facility in Japan (1999-2022)



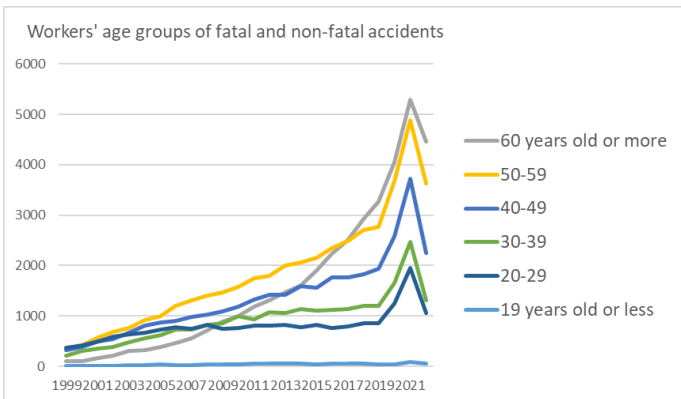
Transition of Top 5 of Causal agents (Large) of fatal and non-fatal accidents in 1302 social welfare facility in Japan (1999-2022)



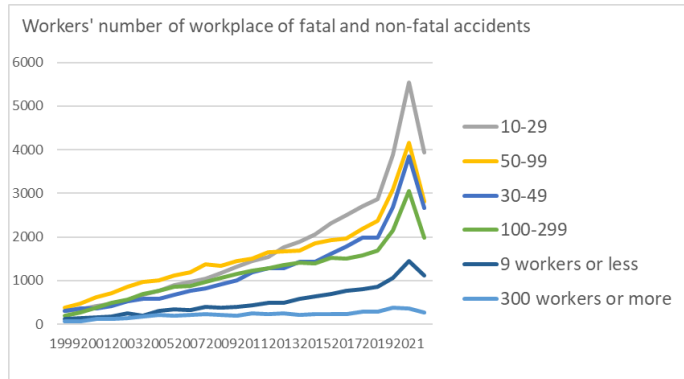
Transition of Top 7 of Causal agents (Middle) of fatal and non-fatal accidents in 1302 social welfare facility in Japan (1999-2022)



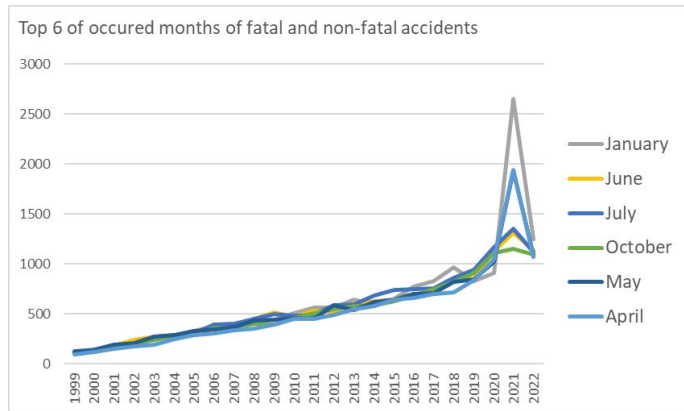
Transition of Top 10 of Causal agents (Small) of fatal and non-fatal accidents in 1302 social welfare facility in Japan (1999-2022)



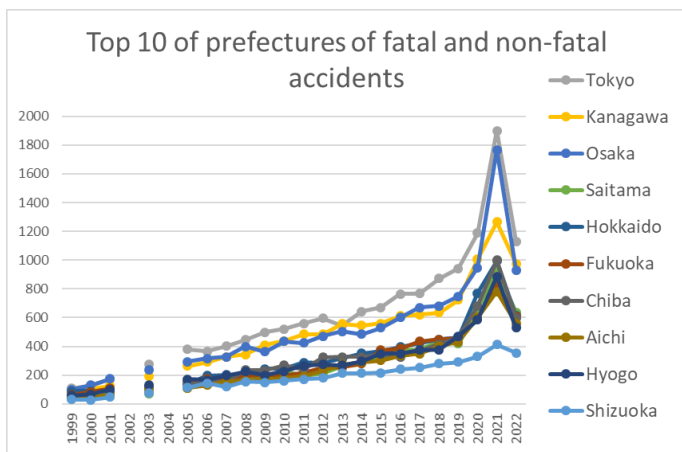
Transition of workers' age groups of fatal and non-fatal accidents in 1302 social welfare facility in Japan (1999-2022)



Transition of workers' number of workplace of fatal and non-fatal accidents in 1302 social welfare facility in Japan (1999-2022)



Transition of Top 6 of occurred months of fatal and non-fatal accidents in 1302 social welfare facility in Japan (1999-2022)



Transition of Top 10 of prefectures of fatal and non-fatal accidents in 1302 social welfare facility in Japan (1999-2022)

Transition of Type of fatal and non-fatal accidents in 1302 social welfare facility in Japan (1999-2022)

Type of accidents	1999	2000	2001	2002	2003	2004	2005	2006	2007	2008	2009	2010	2011	2012	2013	2014	2015	2016	2017	2018	2019	2020	2021	2022	total	Type of accidents
reaction to motion/improper motion	365	482	667	724	886	1,034	1,143	1,401	1,537	1,762	1,764	1,937	2,117	2,235	2,338	2,457	2,576	2,793	2,983	3,186	3,433	4,199	4,539	4,475	51,033	reaction to motion/improper motion
falling to same level	384	464	552	659	834	906	1,009	1,119	1,171	1,324	1,396	1,612	1,801	1,948	2,112	2,259	2,390	2,686	2,893	3,321	3,272	3,892	4,336	4,379	46,719	falling to same level
fall from height	89	98	125	153	186	192	226	220	247	255	332	283	384	392	391	433	491	565	555	625	692	755	802	814	9,305	fall from height
crash	59	69	88	124	137	148	178	163	195	235	234	266	260	318	355	360	356	408	386	438	520	612	657	654	7,220	crash
traffic accident (public road)	90	126	160	181	209	278	330	323	322	325	364	403	410	401	450	519	497	550	545	543	524	503	587	568	9,208	traffic accident (public road)
others	50	76	59	101	100	131	128	198	190	182	247	237	253	256	275	303	342	318	291	341	420	2,056	6,162	535	13,251	others
crashed by	51	44	74	79	100	111	122	119	150	169	152	179	162	213	212	240	233	272	310	337	341	388	398	435	4,891	crashed by
caught in/between	58	56	77	101	98	130	126	121	134	141	163	169	160	168	172	171	196	199	205	196	244	248	240	254	3,827	caught in/between
cut	99	114	136	150	167	191	175	198	188	188	197	204	161	272	243	207	234	205	230	230	256	241	296	225	4,807	cut
struck by flying or	30	35	47	42	49	45	58	61	56	80	75	82	80	79	83	84	93	82	99	106	114	111	143	161	1,895	struck by flying

power transmission mechanism		1				1	1	2			1					1		1	2	1	2	2				15	transmission mechanism
engine											1	2	1								1					5	engine
chemical facilities		1			1																					3	chemical facilities
mobile silviculture machine																											mobile silviculture machine
total	1,356	1,649	2,069	2,411	2,869	3,291	3,621	4,091	4,338	4,829	5,065	5,533	6,054	6,480	6,831	7,224	7,597	8,281	8,738	9,545	10,045	13,267	18,421	12,780	156,385	total	

Transition of Causal agents (Small) of fatal and non-fatal accidents in 1302 social welfare facility in Japan (1999-2022)

Causal (S) agents	1999	2000	2001	2002	2003	2004	2005	2006	2007	2008	2009	2010	2011	2012	2013	2014	2015	2016	2017	2018	2019	2020	2021	2022	total	Causal (S) agents
no causal agent			330		505		611	698	810	984	1,113	1,155	1,214	1,336	1,511	1,592	1,704	1,846	2,064	2,417	2,450	3,092	3,579	3,348	32,359	no causal agent
passage			240		351		460	454	501	578	630	676	813	862	922	1,030	1,053	1,326	1,304	1,624	1,613	1,981	2,218	2,086	20,722	passage
other causal agent			309		406		572	743	703	877	817	914	1,000	1,076	1,003	1,057	1,124	1,235	1,254	1,175	1,421	3,104	7,234	1,717	27,741	other causal agent
stairs, landing stage			80		117		158	179	189	179	228	196	278	309	316	326	399	458	432	458	522	599	618	665	6,706	stairs, landing stage
cars, bus, motorcycle			209		247		375	384	384	409	430	470	453	478	540	579	578	601	622	624	617	583	675	652	9,910	cars, bus, motorcycle
other tools			59		109		113	160	154	212	205	215	215	254	254	295	317	352	367	373	486	526	546	613	5,825	other tools
other environments			106		169		198	208	232	214	215	267	277	309	377	476	381	375	445	458	391	511	554	612	6,775	other environments
human power hauling equipment			55		109		140	145	161	148	195	209	226	260	263	289	297	365	320	357	438	453	492	459	5,381	human power hauling equipment
working platform, boot board			83		145		108	133	154	172	164	219	231	204	234	276	294	284	362	372	329	367	356	450	4,937	working platform, boot board
other equipment, facilities			74		66		101	114	135	158	149	195	190	211	194	204	244	258	274	281	315	378	414	437	4,392	other equipment, facilities
other temporary																										other temporary

buildings, establishments			64		85		118	124	114	121	129	124	169	167	187	204	208	247	226	212	308	350	314	346	3,817	buildings, establishments	
building, establishment			73		106		137	149	146	158	171	221	203	205	227	213	236	223	240	281	279	303	343	335	4,249	building, establishment	
ladder			35		53		52	53	68	82	83	103	105	114	124	120	120	139	153	159	173	220	217	229	2,402	ladder	
load			53		57		75	106	116	88	84	85	91	103	99	75	89	90	114	127	107	176	166	168	2,069	load	
hand tool			77		84		95	122	112	96	113	119	76	166	148	116	141	105	122	136	149	161	182	118	2,438	hand tool	
unclassifiable			63		49		59	83	98	106	81	82	86	107	111	86	69	62	72	98	60	51	61	72	1,556	unclassifiable	
other materials			11		16		32	33	45	21	30	35	32	46	43	37	37	38	39	33	36	43	39	52	698	other materials	
high/cold temperature environment			5		7		8	9	7	13	9	12	20	24	15	15	18	14	21	35	21	30	30	39	352	high/cold temperature environment	
other general power machines			19		18		20	19	21	24	11	29	20	31	25	24	19	17	29	26	28	25	41	35	481	other general power machines	
food manufacturing machine			19		18		25	23	22	23	28	30	30	25	41	16	35	39	35	32	25	35	32	32	565	food manufacturing machine	
natural ground, rock			11		14		20	13	14	13	9	8	18	13	15	14	27	20	21	18	26	28	31	31	364	natural ground, rock	
human power cranes					1			1		1							1	1	1		1	4	6	10	31	58	human power cranes
transmission			1		2			1	2	1	3	4	4	5	5	8	7	9	16	20	19	13	19	29	168	transmission	
truck			5		14		17	12	16	21	23	14	18	22	18	28	26	29	34	40	29	36	31	26	459	truck	
other vehicles			17		13		30	22	29	24	24	31	30	28	20	25	37	25	17	19	20	15	23	23	472	other vehicles	
metal material			9		13		5	8	10	12	15	8	7	12	8	11	11	13	15	16	18	13	17	19	240	metal material	
standing tree			3		6		6	7	8	6	8	8	8	7	11	7	11	10	14	12	14	21	17	16	200	standing tree	
lumber, bamboo			4		7		7	5	9	3	4	6	7	9	5	12	9	8	8	16	10	12	19	15	175	lumber, bamboo	
other hazards,			6		13		8	11	15	8	18	6	15	9	14	8	15	15	17	15	9	15	14	14	245	other hazards,	

conveying machines			5		3		6	9	4	5	3	4	3	6	10	3	3	6	6	2	7	8	4	2	99	conveying machines
other woodworking machines					2		2	1		1	2	1	3	3	3	2	3	2	2		3	4	4	2	40	other woodworking machines
printing machine					1		2														1		2	6	printing machine	
inflammable substance					1		1	2	1	3			1	2	2		1		1	3	2	1	2	1	24	inflammable substance
other powered crane					4		1	2		1			3	2		1	1	1	1	1	2		1	1	22	other powered crane
conveyor			2					1	1	1	2	1					1		2	1	3	1	2	1	19	conveyor
abnormal environment			1		1		1			1		3	1	1	3				1	1				1	15	abnormal environment
leveling, transporting or loading machine													1	1		1					2	1		1	9	leveling, transporting or loading machine
other pressure vessels								1	1	1						1	2				1			1	8	other pressure vessels
boiler								1			1				1									1	4	boiler
electric power facilities															1				1				1	1	4	electric power facilities
other welding equipment																								1	1	other welding equipment
chain saw			1		1			1	1	3	2	2		1	3			2	2	3	5	1	3		31	chain saw
inflammable gas			1		1		1	2	1	3	1	2	1		1	1	1		1	1	2				21	inflammable gas
wood planer machine			2							1	4	1			2	2		1	1		1	1			16	wood planer machine
industrial dryer							1	1	1			1		1	1			1	3		1	1	2		14	industrial dryer
power transmission							1	2				1					1	2	1	2	2			13	power transmission	

mechanism																									mechanism				
other metal manufacturing machines			1					1		1	2	1				1	1		1		2	1	1		13	other metal manufacturing machines			
other kiln, caldron					2			1					1			2	2	1	1					1	1	12	other kiln, caldron		
railway vehicle			1							1	1					2								3		10	railway vehicle		
other construction machines			1					1					2			1								1	1		8	other construction machines	
timbering					1			1						1	1										1		6	timbering	
engine											1	2	1												1		5	engine	
power press					1									1	1	1											5	power press	
pressure vessel			1		1																						4	pressure vessel	
slinging tool											1													1	1		4	slinging tool	
explosive substance																									1	2		4	explosive substance
band sawing machine								1																			3	band sawing machine	
excavating machine																1											3	excavating machine	
crane																										2	1	3	crane
demolition machine																										1		2	demolition machine
centrifugal machine								1																			2	centrifugal machine	
derrick crane											1	1															2	derrick crane	
chemical facilities					1																						2	chemical facilities	
hollow chisel mortiser, wood borer			1																								1	hollow chisel mortiser, wood borer	
chamfering machine, router,																											1	chamfering machine, router,	

woodworking milling machine																									woodworking milling machine				
vehicle for high lift work																				1					1	vehicle for high lift work			
forging pressure hammer																					1					1	forging pressure hammer		
shearing machine																										1	shearing machine		
injection molding machine																	1										1	injection molding machine	
mobile crane																										1	1	mobile crane	
railway equipment																											1	1	railway equipment
loader																											1	1	loader
gas welding equipment																											1	1	gas welding equipment
foundation work machine																													foundation work machine
hardening machine																													hardening machine
lathe																													lathe
drill press, milling machine																													drill press, milling machine
industrial robot																													industrial robot
felling machine																													felling machine
mobile logging machine																													mobile logging machine
skyline yarding machine																													skyline yarding machine
other mobile silviculture machine																													other mobile silviculture machine

cargo lifting appliance																										cargo lifting appliance	
gondola																											gondola
lumberyard equipment, logging cableway																											lumberyard equipment, logging cableway
simple skyline yarding equipment																											simple skyline yarding equipment
straddle carrier																											straddle carrier
rough terrain hauler																											rough terrain hauler
arc welding equipment																											arc welding equipment
radiation																											radiation
total	1,356	1,649	2,069	2,411	2,869	3,291	3,621	4,091	4,338	4,829	5,065	5,533	6,054	6,480	6,831	7,224	7,597	8,281	8,738	9,545	10,045	13,267	18,421	12,780	156,385	total	

Transition of workers' age groups of fatal and non-fatal accidents in 1302 social welfare facility in Japan (1999-2022)

Age	1999	2000	2001	2002	2003	2004	2005	2006	2007	2008	2009	2010	2011	2012	2013	2014	2015	2016	2017	2018	2019	2020	2021	2022	total	Age
60 years old or more	96	106	164	206	301	322	380	459	552	714	878	995	1,190	1,317	1,471	1,611	1,911	2,241	2,498	2,922	3,262	4,060	5,291	4,465	37,412	60 years old or more
50-59	345	421	569	675	768	923	996	1,192	1,304	1,407	1,472	1,571	1,744	1,801	1,999	2,062	2,161	2,348	2,486	2,702	2,765	3,682	4,888	3,631	43,912	50-59
40-49	326	388	490	545	659	805	867	908	984	1,023	1,088	1,181	1,332	1,419	1,420	1,584	1,562	1,762	1,770	1,829	1,929	2,575	3,728	2,252	32,426	40-49
30-39	216	300	348	386	482	550	617	734	725	822	848	990	939	1,074	1,066	1,137	1,100	1,120	1,137	1,193	1,203	1,661	2,471	1,317	22,436	30-39
20-29	365	420	488	585	641	667	722	772	742	828	743	754	801	810	825	780	819	759	798	849	850	1,243	1,955	1,054	19,270	20-29
19 years old or less	8	14	10	14	18	24	39	26	31	35	36	42	48	59	50	50	44	51	49	50	36	46	88	61	929	19 years old or less
total	1,356	1,649	2,069	2,411	2,869	3,291	3,621	4,091	4,338	4,829	5,065	5,533	6,054	6,480	6,831	7,224	7,597	8,281	8,738	9,545	10,045	13,267	18,421	12,780	156,385	total

Transition of workers' number of workplace of fatal and non-fatal accidents in 1302 social welfare facility in Japan (1999-2022)

Workers scale	1999	2000	2001	2002	2003	2004	2005	2006	2007	2008	2009	2010	2011	2012	2013	2014	2015	2016	2017	2018	2019	2020	2021	2022	total	Workers scale
10-29	302	346	423	477	538	674	757	903	967	1,039	1,166	1,318	1,439	1,543	1,764	1,889	2,064	2,313	2,500	2,700	2,874	3,888	5,539	3,936	41,359	10-29
50-99	379	466	626	717	853	967	1,002	1,117	1,198	1,369	1,329	1,449	1,500	1,654	1,677	1,696	1,849	1,924	1,969	2,184	2,367	3,098	4,157	2,815	38,362	50-99
30-49	302	357	359	424	532	579	586	679	768	823	914	1,014	1,195	1,275	1,291	1,425	1,434	1,609	1,779	1,978	1,977	2,686	3,854	2,662	30,502	30-49
100-299	197	273	378	488	571	689	765	861	869	974	1,057	1,153	1,226	1,288	1,355	1,410	1,384	1,515	1,498	1,585	1,690	2,155	3,059	1,985	28,425	100-299
9 workers or less	112	136	164	183	242	198	297	334	323	397	381	402	436	491	488	584	644	691	762	803	859	1,063	1,444	1,118	12,552	9 workers or less
300 workers or more	64	71	119	122	133	184	214	197	213	227	218	197	258	229	256	220	222	229	230	295	278	377	368	264	5,185	300 workers or more
total	1,356	1,649	2,069	2,411	2,869	3,291	3,621	4,091	4,338	4,829	5,065	5,533	6,054	6,480	6,831	7,224	7,597	8,281	8,738	9,545	10,045	13,267	18,421	12,780	156,385	total

Transition of occurred months of fatal and non-fatal accidents in 1302 social welfare facility in Japan (1999-2022)

Month	1999	2000	2001	2002	2003	2004	2005	2006	2007	2008	2009	2010	2011	2012	2013	2014	2015	2016	2017	2018	2019	2020	2021	2022	total	Month
January	122	122	159	206	246	277	329	378	342	424	441	504	566	563	648	597	652	774	832	967	830	907	2,650	1,246	14,782	January
June	127	132	182	242	274	294	319	344	373	455	515	472	531	521	608	626	646	701	720	832	856	1,127	1,313	1,145	13,355	June
July	125	149	190	202	276	293	303	394	400	453	503	487	493	585	598	682	741	750	758	859	946	1,167	1,355	1,124	13,833	July
October	114	135	191	203	244	284	292	360	359	406	397	456	511	548	581	586	630	688	753	821	912	1,109	1,151	1,093	12,824	October
May	117	135	197	211	274	294	332	349	367	435	446	456	452	588	543	621	647	702	709	825	844	1,021	1,935	1,091	13,591	May
April	100	123	153	178	195	250	293	303	341	353	397	448	448	493	549	580	641	657	701	718	836	1,047	1,944	1,071	12,819	April
March	109	142	147	179	204	252	296	314	343	340	389	464	595	507	570	549	595	639	690	744	788	953	1,398	1,065	12,272	March
August	118	159	191	211	259	299	314	356	416	406	447	477	543	606	604	605	641	750	734	829	929	1,166	1,799	1,028	13,887	August
September	116	136	202	210	230	289	272	343	373	413	416	425	503	546	538	581	627	661	684	810	805	1,131	1,220	1,006	12,537	September
November	111	144	149	195	210	255	331	303	305	329	393	439	455	476	489	562	600	658	697	758	783	1,137	1,022	1,002	11,803	November
February	104	127	139	174	195	238	285	344	360	463	377	492	499	587	554	662	604	694	759	743	803	839	1,606	964	12,612	February
December	93	145	169	200	262	266	255	303	359	352	344	413	458	460	549	573	573	607	701	639	713	1,663	1,028	945	12,070	December
total	1,356	1,649	2,069	2,411	2,869	3,291	3,621	4,091	4,338	4,829	5,065	5,533	6,054	6,480	6,831	7,224	7,597	8,281	8,738	9,545	10,045	13,267	18,421	12,780	156,385	total

Transition of prefectures of fatal and non-fatal accidents in 1302 social welfare facility in Japan (1999-2022)

Prefecture	1999	2000	2001	2002	2003	2004	2005	2006	2007	2008	2009	2010	2011	2012	2013	2014	2015	2016	2017	2018	2019	2020	2021	2022	total	Prefecture
Tokyo	108	129	172		275		381	365	401	447	498	521	560	595	546	644	670	764	766	872	941	1,187	1,900	1,131	13,873	Tokyo
Kanagawa	92	107	126		191		263	291	328	344	411	437	485	485	558	545	559	612	621	634	723	1,005	1,266	974	11,057	Kanagawa
Osaka	100	130	174		238		294	316	326	398	363	435	424	471	504	484	528	600	671	682	749	948	1,768	932	11,535	Osaka
Saitama	39	39	54		73		111	135	144	172	179	227	194	211	264	291	323	373	376	435	418	663	930	638	6,289	Saitama
Hokkaido	89	89	83		123		138	196	203	207	243	245	289	285	316	353	368	396	425	448	461	771	994	613	7,335	Hokkaido
Fukuoka	64	84	109		118		159	176	174	198	203	196	220	252	255	281	373	386	435	450	457	593	833	609	6,625	Fukuoka
Chiba	37	40	59		104		135	165	151	236	232	268	241	324	327	328	340	327	367	415	460	681	1,001	598	6,836	Chiba
Aichi	46	54	65		92		112	130	157	161	175	180	193	231	275	292	302	334	350	401	432	601	782	560	5,925	Aichi
Hyogo	59	67	100		131		172	166	196	224	199	226	267	275	270	297	349	349	375	377	470	585	886	529	6,569	Hyogo
Shizuoka	30	29	46		78		114	145	120	154	149	162	173	180	214	214	216	240	251	280	292	331	412	354	4,184	Shizuoka
Hiroshima	37	42	57		85		118	107	121	122	130	150	160	159	185	212	229	207	245	249	239	290	361	289	3,794	Hiroshima
Kyoto	54	59	87		96		147	151	138	140	170	143	180	195	238	179	225	216	211	214	232	317	414	272	4,078	Kyoto
Ibaraki	24	22	30		29		60	58	66	69	75	83	103	118	109	108	131	138	125	194	167	263	304	233	2,509	Ibaraki
Miyagi	13	28	45		67		91	102	112	109	100	112	216	113	167	168	158	170	171	203	208	232	359	232	3,176	Miyagi
Mie	32	36	36		52		51	59	84	82	103	95	100	119	99	121	127	133	155	146	174	210	251	224	2,489	Mie
Niigata	23	33	40		59		81	91	98	86	98	106	134	132	153	171	178	156	184	204	180	243	297	222	2,969	Niigata
Gunma	16	15	30		47		40	58	58	85	63	93	94	90	92	90	120	131	147	175	183	240	284	217	2,368	Gunma
Nagano	24	48	53		65		84	90	86	96	115	114	132	140	160	169	128	140	146	185	171	198	270	211	2,825	Nagano
Kumamoto	32	47	50		47		44	56	73	44	63	91	92	96	107	109	132	98	127	143	165	246	275	207	2,344	Kumamoto
Kagoshima	19	34	33		59		64	79	96	81	66	97	88	128	105	111	127	176	166	146	171	202	241	204	2,493	Kagoshima
Nagasaki	21	18	20		46		51	62	58	76	85	59	122	104	110	117	108	139	137	159	177	188	270	204	2,331	Nagasaki
Okayama	14	22	27		51		46	56	64	65	73	82	83	108	89	118	114	150	163	158	163	232	267	202	2,347	Okayama
Aomori	26	35	40		35		57	58	48	60	65	72	90	84	85	85	80	105	114	127	118	138	256	188	1,966	Aomori
Okinawa	5	8	19		23		30	35	38	47	44	62	57	56	80	75	81	100	119	123	115	200	278	178	1,773	Okinawa

Tochigi	7	23	21		38		30	57	47	63	64	63	49	65	59	75	90	110	92	106	121	150	221	169	1,720	Tochigi
Miyazaki	13	13	30		31		45	34	37	49	63	60	52	64	69	80	61	103	104	99	130	166	215	169	1,687	Miyazaki
Fukushima	14	21	31		35		35	44	56	63	61	82	77	79	87	120	105	112	107	135	117	153	216	167	1,917	Fukushima
Gifu	17	11	18		24		32	51	38	60	40	69	69	87	85	79	73	99	107	121	138	174	244	159	1,795	Gifu
Nara	22	16	17		34		43	44	59	60	61	65	77	81	76	84	80	100	89	115	133	154	242	153	1,805	Nara
Yamagata	22	20	22		32		44	50	76	58	65	62	72	92	77	98	92	98	103	128	104	128	169	149	1,761	Yamagata
Wakayama	11	24	27		30		52	44	58	70	73	94	86	95	80	85	95	81	114	113	110	123	176	145	1,786	Wakayama
Iwate	22	20	34		39		55	57	37	67	59	77	82	72	85	92	65	92	93	101	118	140	161	140	1,708	Iwate
Yamaguchi	20	22	21		45		39	39	45	51	51	33	61	76	76	51	81	102	92	95	112	106	150	139	1,507	Yamaguchi
Akita	11	25	21		30		31	33	33	44	59	69	80	68	76	82	75	87	86	91	103	109	154	135	1,502	Akita
Oita	21	19	30		31		31	47	46	45	28	51	53	65	67	77	78	82	96	92	106	114	183	135	1,497	Oita
Ehime	17	25	15		24		38	48	59	50	70	55	72	82	84	94	94	97	95	105	99	141	180	134	1,678	Ehime
Shiga	12	11	27		36		46	63	56	98	66	67	86	94	90	96	75	90	75	87	100	163	146	120	1,704	Shiga
Saga	10	20	15		20		30	24	27	33	49	51	34	49	75	72	69	69	94	96	85	104	177	115	1,318	Saga
Ishikawa	18	16	33		25		27	37	45	43	46	51	49	66	68	62	66	71	73	93	85	100	118	105	1,297	Ishikawa
Shimane	19	27	29		41		32	60	45	44	63	51	57	72	68	68	76	88	88	79	80	89	117	86	1,379	Shimane
Kochi	30	34	31		46		38	36	48	32	53	73	55	69	47	59	46	48	51	69	58	82	82	84	1,171	Kochi
Toyama	4	12	14		29		22	28	32	34	46	45	54	51	48	65	52	50	71	72	72	96	91	84	1,072	Toyama
Fukui	11	14	20		21		26	38	37	29	35	38	59	47	31	54	55	74	61	84	77	66	100	84	1,061	Fukui
Kagawa	22	22	18		26		30	35	42	41	36	32	40	45	63	50	65	60	54	67	71	98	135	80	1,132	Kagawa
Yamanashi	6	15	13		17		18	25	26	32	31	32	37	47	52	46	49	46	51	65	61	81	77	77	904	Yamanashi
Tokushima	12	19	17		16		21	27	23	32	29	42	27	35	35	36	52	47	52	64	63	91	87	75	902	Tokushima
Tottori	11	5	10		15		13	23	26	28	15	15	29	28	25	37	37	35	43	48	36	75	81	55	690	Tottori
total	1,356	1,649	2,069	2,411	2,869	3,291	3,621	4,091	4,338	4,829	5,065	5,533	6,054	6,480	6,831	7,224	7,597	8,281	8,738	9,545	10,045	13,267	18,421	12,780	156,385	total

Return to https://www.jisha.or.jp/english/statistics/202312_05.html