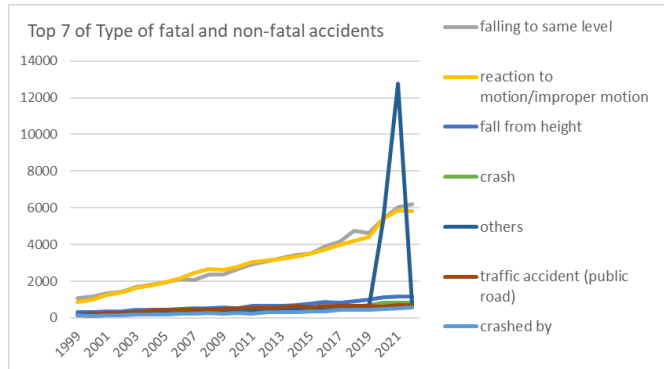
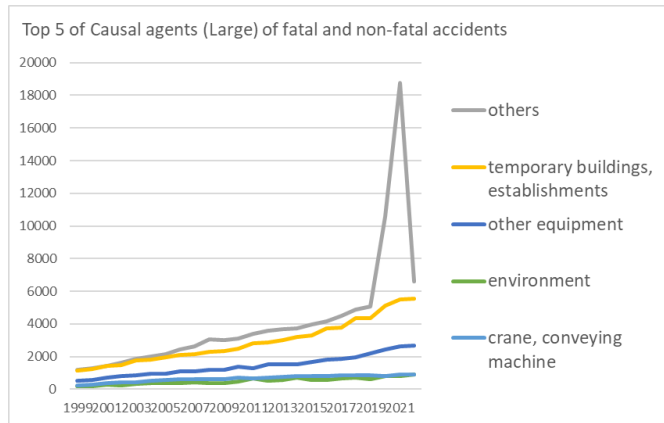


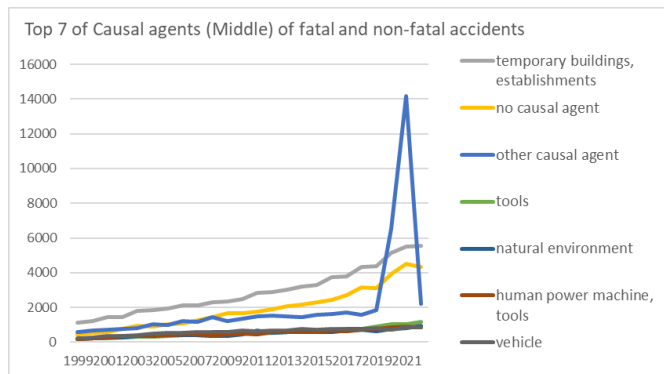
Transition of fatal and non-fatal accidents in 13 health and hygiene service in Japan (1999-2022)



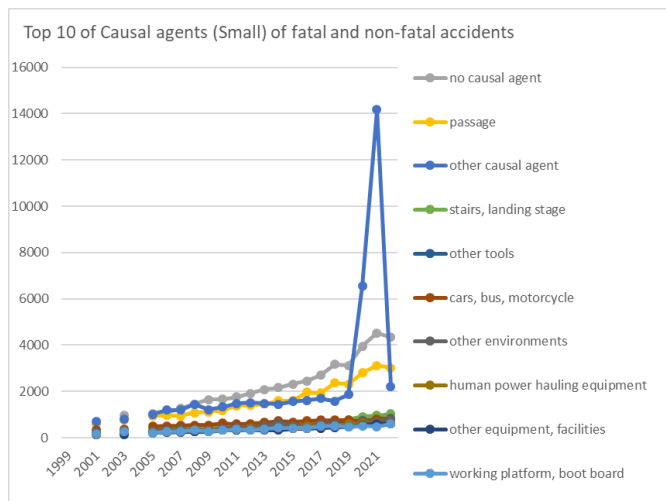
Transition of Top 7 of Type of fatal and non-fatal accidents in 13 health and hygiene service in Japan (1999-2022)



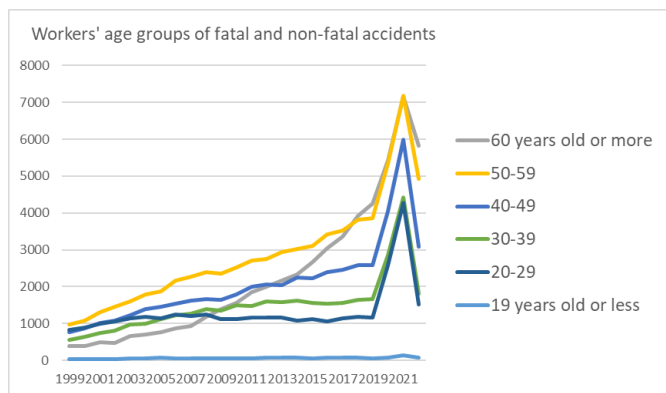
Transition of Top 5 of Causal agents (Large) of fatal and non-fatal accidents in 13 health and hygiene service in Japan (1999-2022)



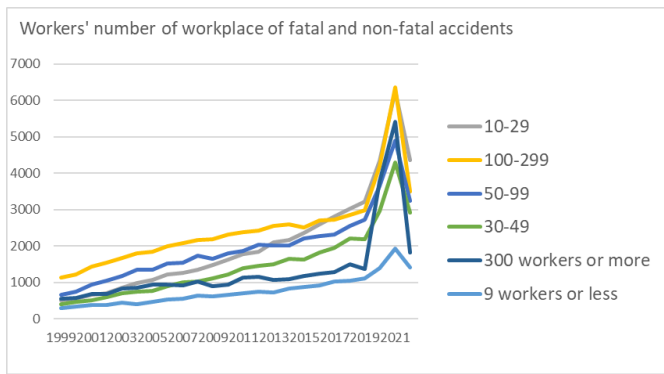
Transition of Top 7 of Causal agents (Middle) of fatal and non-fatal accidents in 13 health and hygiene service in Japan (1999-2022)



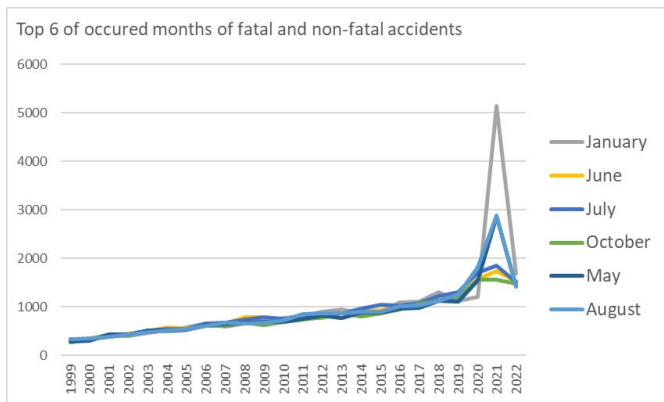
Transition of Top 10 of Causal agents (Small) of fatal and non-fatal accidents in 13 health and hygiene service in Japan (1999-2022)



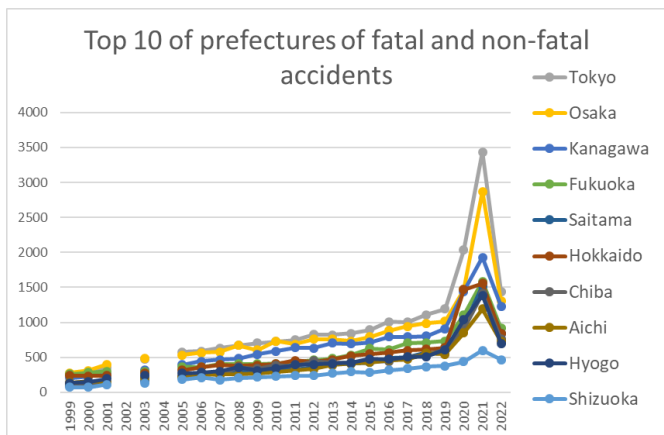
Transition of workers' age groups of fatal and non-fatal accidents in 13 health and hygiene service in Japan (1999-2022)



Transition of workers' number of workplace of fatal and non-fatal accidents in 13 health and hygiene service in Japan (1999-2022)



Transition of Top 6 of occurred months of fatal and non-fatal accidents in 13 health and hygiene service in Japan (1999-2022)



Transition of Top 10 of prefectures of fatal and non-fatal accidents in 13 health and hygiene service in Japan (1999-2022)

| | | | | | | | | | | | | | | | | | | | | | | | | | | |
|--------------------------------|-------|-------|-------|-------|-------|-------|-------|-------|-------|-------|-------|-------|-------|-------|-------|--------|--------|--------|--------|--------|--------|--------|--------|--------|---------|--------------------------------|
| injury to the sole of the foot | 3 | 4 | 5 | 1 | 2 | 8 | 6 | 6 | 3 | 4 | 6 | 5 | 2 | 7 | 11 | 1 | 5 | 8 | 6 | 4 | 2 | 9 | 7 | 8 | 123 | injury to the sole of the foot |
| fire | | | | 7 | 3 | 1 | 2 | | 3 | 3 | 4 | 3 | 2 | 1 | 3 | 1 | 1 | 2 | | | 1 | 1 | | 6 | 44 | fire |
| electric shock | 2 | 3 | 1 | 2 | 1 | 1 | 4 | 2 | 4 | 4 | 4 | | | 1 | 5 | 2 | 2 | 2 | 1 | 3 | | 1 | 2 | 2 | 49 | electric shock |
| drown | 3 | | | | 1 | 1 | 3 | 1 | | 1 | | | 126 | | | | 5 | 2 | 1 | 2 | 1 | 2 | 1 | 1 | 151 | drown |
| explosion | | 2 | 1 | 1 | 3 | 1 | 4 | 8 | 6 | 1 | 1 | 1 | | 1 | 2 | 2 | | | 1 | 1 | 1 | 2 | 5 | | 44 | explosion |
| burst | 1 | | 1 | | 1 | 2 | 1 | | 2 | 2 | | | 1 | | 1 | | 2 | 1 | | 1 | 2 | 2 | | | 20 | burst |
| total | 3,531 | 3,897 | 4,585 | 4,911 | 5,628 | 6,111 | 6,404 | 7,061 | 7,342 | 7,930 | 7,921 | 8,531 | 9,231 | 9,635 | 9,964 | 10,342 | 10,708 | 11,513 | 12,106 | 13,208 | 13,559 | 20,286 | 29,153 | 17,237 | 240,794 | total |

Transition of Causal agents (Large) of fatal and non-fatal accidents in 13 health and hygiene service in Japan (1999-2022)

| Causal (L) agents | 1999 | 2000 | 2001 | 2002 | 2003 | 2004 | 2005 | 2006 | 2007 | 2008 | 2009 | 2010 | 2011 | 2012 | 2013 | 2014 | 2015 | 2016 | 2017 | 2018 | 2019 | 2020 | 2021 | 2022 | total | Causal (L) agents |
|-------------------------------------|-------|-------|-------|-------|-------|-------|-------|-------|-------|-------|-------|-------|-------|-------|-------|--------|--------|--------|--------|--------|--------|--------|--------|--------|---------|-------------------------------------|
| others | 1,172 | 1,298 | 1,445 | 1,621 | 1,871 | 2,024 | 2,157 | 2,446 | 2,624 | 3,064 | 2,990 | 3,123 | 3,382 | 3,583 | 3,702 | 3,741 | 3,968 | 4,161 | 4,492 | 4,878 | 5,057 | 10,571 | 18,782 | 6,619 | 98,771 | others |
| temporary buildings, establishments | 1,124 | 1,232 | 1,428 | 1,463 | 1,787 | 1,831 | 1,959 | 2,110 | 2,129 | 2,281 | 2,337 | 2,489 | 2,828 | 2,888 | 3,034 | 3,196 | 3,313 | 3,754 | 3,786 | 4,334 | 4,375 | 5,123 | 5,487 | 5,564 | 69,852 | temporary buildings, establishments |
| other equipment | 546 | 581 | 695 | 803 | 843 | 949 | 955 | 1,084 | 1,097 | 1,204 | 1,216 | 1,380 | 1,297 | 1,520 | 1,512 | 1,522 | 1,681 | 1,802 | 1,866 | 1,973 | 2,218 | 2,460 | 2,623 | 2,691 | 34,518 | other equipment |
| environment | 199 | 205 | 288 | 252 | 345 | 369 | 383 | 388 | 417 | 375 | 360 | 459 | 669 | 521 | 572 | 718 | 594 | 587 | 674 | 723 | 614 | 787 | 822 | 927 | 12,248 | environment |
| crane, conveying machine | 234 | 280 | 385 | 424 | 437 | 539 | 586 | 599 | 613 | 628 | 638 | 708 | 683 | 711 | 745 | 816 | 788 | 816 | 854 | 849 | 859 | 816 | 904 | 896 | 15,808 | crane, conveying machine |
| load | 84 | 98 | 140 | 124 | 132 | 136 | 146 | 183 | 211 | 161 | 161 | 153 | 167 | 165 | 152 | 138 | 144 | 168 | 185 | 211 | 191 | 274 | 269 | 269 | 4,062 | load |
| substance, material | 78 | 97 | 96 | 114 | 112 | 137 | 114 | 134 | 154 | 107 | 119 | 105 | 111 | 131 | 132 | 115 | 117 | 118 | 135 | 142 | 125 | 141 | 139 | 157 | 2,930 | substance, material |
| machine | 94 | 106 | 108 | 110 | 101 | 126 | 104 | 117 | 97 | 110 | 100 | 114 | 94 | 116 | 115 | 96 | 103 | 107 | 114 | 98 | 120 | 114 | 127 | 114 | 2,605 | machine |
| total | 3,531 | 3,897 | 4,585 | 4,911 | 5,628 | 6,111 | 6,404 | 7,061 | 7,342 | 7,930 | 7,921 | 8,531 | 9,231 | 9,635 | 9,964 | 10,342 | 10,708 | 11,513 | 12,106 | 13,208 | 13,559 | 20,286 | 29,153 | 17,237 | 240,794 | total |

| | | | | | | | | | | | | | | | | | | | | | | | | | | |
|------------------------------|-------|-------|-------|-------|-------|-------|-------|-------|-------|-------|-------|-------|-------|-------|-------|--------|--------|--------|--------|--------|--------|--------|--------|--------|---------|------------------------------|
| hazards, harmful substances | 29 | 30 | 32 | 32 | 34 | 38 | 27 | 43 | 33 | 40 | 40 | 25 | 31 | 29 | 37 | 27 | 32 | 32 | 39 | 36 | 27 | 28 | 29 | 30 | 780 | harmful substances |
| crane | 8 | 4 | 9 | 15 | 8 | 17 | 9 | 14 | 12 | 14 | 16 | 9 | 17 | 11 | 12 | 10 | 15 | 9 | 13 | 10 | 14 | 16 | 14 | 10 | 286 | crane |
| woodworking machine | 13 | 13 | 9 | 10 | 13 | 15 | 15 | 13 | 9 | 13 | 14 | 12 | 12 | 12 | 17 | 10 | 13 | 12 | 9 | 12 | 24 | 10 | 23 | 7 | 310 | woodworking machine |
| pressure vessel | 2 | 6 | 3 | 3 | 4 | 3 | 5 | 4 | 4 | 5 | 6 | 3 | 4 | 7 | 3 | 7 | 6 | 6 | 3 | 2 | 5 | 4 | 2 | 6 | 103 | pressure vessel |
| metal manufacturing machine | 6 | 4 | 4 | 2 | 3 | 5 | 2 | 1 | 2 | 5 | 6 | 1 | 1 | 2 | 1 | 2 | 3 | 4 | 4 | 1 | 4 | 3 | 3 | 6 | 75 | metal manufacturing machine |
| kiln, caldron | 4 | 3 | 8 | 11 | 7 | 3 | 4 | 11 | 6 | 5 | 6 | 13 | 8 | 12 | 7 | 12 | 7 | 3 | 10 | 9 | 12 | 4 | 9 | 5 | 179 | kiln, caldron |
| construction machine | | 2 | 5 | 2 | | 1 | 2 | 11 | 2 | | | | 8 | 2 | 3 | 3 | | 2 | 1 | 4 | 3 | 2 | 1 | 1 | 55 | construction machine |
| engine | | | | | 1 | 1 | | | | | | 2 | 2 | 1 | | | | | | | 1 | 1 | | 1 | 10 | engine |
| welding equipment | | | | | | | | | | | | | | | | | | 1 | | | 1 | | | 1 | 3 | welding equipment |
| power transmission mechanism | | 4 | | 2 | 1 | 1 | 1 | 3 | | 1 | 1 | 1 | 1 | | | 1 | 3 | 1 | 2 | 1 | 2 | 3 | | | 29 | power transmission mechanism |
| chemical facilities | | 1 | | 1 | 1 | | | | | | | | 1 | | | | | | | | | | | | 4 | chemical facilities |
| mobile silviculture machine | | | | | | | | | | | | | | | | | | | | | | 1 | | | 1 | mobile silviculture machine |
| total | 3,531 | 3,897 | 4,585 | 4,911 | 5,628 | 6,111 | 6,404 | 7,061 | 7,342 | 7,930 | 7,921 | 8,531 | 9,231 | 9,635 | 9,964 | 10,342 | 10,708 | 11,513 | 12,106 | 13,208 | 13,559 | 20,286 | 29,153 | 17,237 | 240,794 | total |

Transition of Causal agents (Small) of fatal and non-fatal accidents in 13 health and hygiene service in Japan (1999-2022)

| Causal (S) agents | 1999 | 2000 | 2001 | 2002 | 2003 | 2004 | 2005 | 2006 | 2007 | 2008 | 2009 | 2010 | 2011 | 2012 | 2013 | 2014 | 2015 | 2016 | 2017 | 2018 | 2019 | 2020 | 2021 | 2022 | total | Causal (S) agents |
|-------------------|------|------|------|------|------|------|-------|-------|-------|-------|-------|-------|-------|-------|-------|-------|-------|-------|-------|-------|-------|-------|-------|-------|--------|-------------------|
| no causal agent | | | 600 | | 954 | | 1,034 | 1,100 | 1,265 | 1,446 | 1,653 | 1,663 | 1,768 | 1,911 | 2,076 | 2,163 | 2,311 | 2,456 | 2,696 | 3,170 | 3,125 | 3,948 | 4,530 | 4,331 | 44,200 | no causal agent |

| | | | | | | | | | | | | | | | | | | | | | | | | | | |
|---|--|--|----|--|----|--|----|----|----|----|----|----|-----|----|----|----|----|----|----|----|----|----|----|----|-----|---|
| transmission | | | 2 | | 3 | | 1 | 4 | 7 | 6 | 10 | 9 | 8 | 13 | 7 | 10 | 17 | 20 | 28 | 36 | 37 | 26 | 33 | 50 | 327 | transmission |
| other general power machines | | | 43 | | 36 | | 36 | 38 | 38 | 37 | 27 | 45 | 28 | 43 | 33 | 40 | 29 | 29 | 39 | 33 | 43 | 42 | 50 | 47 | 756 | other general power machines |
| food manufacturing machine | | | 45 | | 44 | | 41 | 48 | 43 | 49 | 51 | 45 | 40 | 51 | 56 | 39 | 51 | 56 | 52 | 42 | 34 | 48 | 43 | 44 | 922 | food manufacturing machine |
| natural ground, rock | | | 17 | | 20 | | 26 | 18 | 24 | 16 | 12 | 11 | 21 | 18 | 19 | 22 | 31 | 27 | 25 | 24 | 30 | 29 | 36 | 34 | 460 | natural ground, rock |
| truck | | | 9 | | 28 | | 23 | 20 | 22 | 29 | 29 | 21 | 21 | 31 | 24 | 34 | 33 | 39 | 41 | 42 | 36 | 42 | 36 | 32 | 592 | truck |
| other vehicles | | | 25 | | 23 | | 36 | 29 | 35 | 31 | 31 | 39 | 44 | 36 | 25 | 33 | 44 | 27 | 24 | 22 | 22 | 24 | 26 | 30 | 606 | other vehicles |
| metal material | | | 16 | | 20 | | 14 | 21 | 22 | 19 | 21 | 14 | 18 | 17 | 14 | 15 | 17 | 23 | 24 | 22 | 26 | 22 | 25 | 24 | 394 | metal material |
| other hazards, harmful substances | | | 13 | | 25 | | 17 | 21 | 19 | 23 | 27 | 12 | 24 | 15 | 23 | 16 | 23 | 22 | 28 | 23 | 16 | 20 | 17 | 20 | 404 | other hazards, harmful substances |
| standing tree | | | 4 | | 9 | | 10 | 9 | 9 | 6 | 13 | 10 | 10 | 12 | 13 | 10 | 13 | 13 | 16 | 12 | 17 | 22 | 20 | 20 | 248 | standing tree |
| opening | | | 7 | | 7 | | 8 | 8 | 6 | 5 | 9 | 9 | 11 | 7 | 8 | 10 | 12 | 13 | 7 | 12 | 16 | 21 | 18 | 18 | 212 | opening |
| lumber, bamboo | | | 7 | | 12 | | 11 | 7 | 11 | 4 | 6 | 7 | 13 | 11 | 10 | 15 | 10 | 11 | 11 | 19 | 14 | 14 | 21 | 16 | 230 | lumber, bamboo |
| machine/equipment as load | | | 11 | | 10 | | 6 | 7 | 17 | 11 | 11 | 13 | 13 | 8 | 9 | 8 | 9 | 11 | 5 | 8 | 15 | 9 | 11 | 16 | 208 | machine/equipment as load |
| water | | | 12 | | 12 | | 20 | 8 | 11 | 15 | 12 | 11 | 187 | 16 | 12 | 14 | 16 | 19 | 17 | 27 | 19 | 29 | 19 | 13 | 489 | water |
| stone, sand, substance | | | 8 | | 7 | | 8 | 2 | 9 | 7 | 6 | 6 | 3 | 9 | 10 | 6 | 6 | 3 | 11 | 14 | 7 | 13 | 14 | 13 | 162 | stone, sand, substance |
| roof, beam, haze, crossbeam, principal rafter | | | 3 | | 10 | | 9 | 6 | 7 | 4 | 8 | 10 | 8 | 12 | 8 | 11 | 9 | 9 | 11 | 13 | 5 | 8 | 6 | 11 | 168 | roof, beam, haze, crossbeam, principal rafter |
| other electrical equipment | | | 5 | | 3 | | 6 | 7 | 3 | 2 | 4 | 3 | 5 | 4 | 6 | 2 | 5 | 12 | 12 | 12 | 11 | 14 | 17 | 10 | 143 | other electrical equipment |
| elevator, lift | | | 8 | | 4 | | 7 | 12 | 11 | 11 | 14 | 9 | 13 | 9 | 12 | 9 | 14 | 7 | 12 | 9 | 12 | 13 | 11 | 9 | 206 | elevator, lift |
| harmful substance | | | 17 | | 6 | | 7 | 16 | 5 | 8 | 10 | 9 | 4 | 8 | 6 | 7 | 7 | 6 | 9 | 9 | 8 | 1 | 6 | 7 | 156 | harmful substance |
| scaffolding | | | 1 | | 2 | | 3 | 2 | 6 | 1 | 2 | 4 | 2 | 6 | 2 | 4 | 7 | 6 | 4 | 6 | 3 | 3 | 5 | 7 | 76 | scaffolding |

| | | | | | | | | | | | | | | | | | | | | | | | | | |
|--|--|--|---|----|--|----|----|---|---|---|----|---|---|----|---|---|----|----|---|----|----|----|---|-----|--|
| other powered conveying machines | | | 8 | 7 | | 11 | 13 | 8 | 8 | 7 | 10 | 5 | 9 | 12 | 3 | 5 | 10 | 10 | 6 | 10 | 14 | 7 | 6 | 169 | other powered conveying machines |
| human power machine | | | 5 | 1 | | 1 | 5 | 4 | 4 | 2 | 4 | 6 | 1 | 3 | 1 | 1 | 2 | 3 | 2 | 1 | 3 | 7 | 6 | 62 | human power machine |
| grinding machine, buffing machine | | | | 2 | | 2 | | 2 | 1 | 1 | | | 1 | | | 1 | 4 | 2 | 1 | | 1 | 2 | 6 | 26 | grinding machine, buffing machine |
| circular sawing machine | | | 4 | 10 | | 11 | 8 | 4 | 4 | 9 | 9 | 7 | 6 | 9 | 7 | 8 | 4 | 5 | 5 | 13 | 5 | 15 | 4 | 147 | circular sawing machine |
| kiln, caldron | | | 5 | 5 | | 3 | 8 | 4 | 5 | 4 | 11 | 6 | 9 | 4 | 9 | 4 | 1 | 6 | 8 | 10 | 2 | 6 | 4 | 114 | kiln, caldron |
| other pressure vessels | | | 1 | 2 | | 4 | 2 | 2 | 3 | 5 | 2 | 3 | 5 | 1 | 3 | 5 | 3 | 3 | | 3 | 3 | 2 | 4 | 56 | other pressure vessels |
| forklift | | | 1 | 1 | | 2 | | | 1 | | | 2 | 2 | 1 | 3 | 2 | 2 | 2 | 4 | 3 | 3 | 3 | 4 | 36 | forklift |
| mixer, grinder | | | 1 | 2 | | 3 | 2 | 2 | 3 | 1 | 5 | 2 | 4 | 2 | 1 | 2 | 1 | 4 | 3 | 7 | 3 | 6 | 3 | 57 | mixer, grinder |
| conveyor | | | 3 | 1 | | 5 | 3 | 4 | 1 | 3 | 2 | 1 | 3 | 2 | 2 | 2 | | 3 | 2 | 5 | 1 | 2 | 3 | 48 | conveyor |
| roll machine (except printingroll machine) | | | 1 | | | 1 | 1 | 1 | 2 | | 3 | | | 2 | | 1 | 2 | 2 | 1 | 2 | | 1 | 3 | 23 | roll machine (except printingroll machine) |
| other woodworking machines | | | | 2 | | 2 | 2 | | 2 | 2 | 1 | 3 | 3 | 3 | 2 | 3 | 3 | 2 | 1 | 3 | 4 | 4 | 2 | 44 | other woodworking machines |
| inflammable gas | | | 2 | 2 | | 2 | 4 | 7 | 4 | 1 | 2 | 1 | | 2 | 2 | 1 | 2 | | 1 | 1 | 4 | | 2 | 40 | inflammable gas |
| boiler | | | | 1 | | | 1 | 1 | | 1 | | | 1 | 1 | 1 | | 1 | | 1 | | 1 | | 2 | 12 | boiler |
| printing machine | | | | 1 | | 2 | | | | | | | | | | | | | | | 1 | | 2 | 6 | printing machine |
| chain saw | | | 1 | 1 | | 1 | 2 | 4 | 3 | 2 | 2 | 2 | 1 | 3 | | 1 | 3 | 2 | 5 | 5 | 1 | 3 | 1 | 43 | chain saw |
| inflammable substance | | | | 1 | | 1 | 2 | 2 | 3 | 1 | 2 | 1 | 3 | 2 | 1 | 1 | 1 | 2 | 3 | 2 | 1 | 6 | 1 | 36 | inflammable substance |
| abnormal environment | | | 4 | 3 | | 2 | | | 2 | | 4 | 2 | 3 | 3 | | | | 2 | 8 | | 2 | | 1 | 36 | abnormal environment |
| other powered | | | | 4 | | 1 | 2 | 1 | 2 | 1 | | 3 | 2 | | 1 | 1 | 2 | 1 | 1 | 2 | 1 | 1 | 1 | 27 | other powered |

| | | | | | | | | | | | | | | | | | | | | | | | | | | |
|---|--|--|---|--|---|--|---|----|---|---|---|---|---|---|---|---|---|---|---|---|---|---|---|-------|---|--|
| crane | | | | | | | | | | | | | | | | | | | | | | | | crane | | |
| other kiln, caldron | | | 2 | | 2 | | | 2 | 1 | | 1 | 1 | 1 | 1 | 2 | 3 | 2 | 1 | 1 | 1 | 1 | 1 | 1 | 1 | 25 | other kiln, caldron |
| leveling, transporting or loading machine | | | 1 | | | | | 11 | 1 | | | | | | 1 | | 1 | 1 | 2 | 1 | | | 1 | 22 | leveling, transporting or loading machine | |
| engine | | | | | 1 | | | | | | | 2 | 2 | 1 | | | | | | | 1 | 1 | | 1 | 9 | engine |
| electric power facilities | | | | | | | | | | | | | | | 1 | | | | | | | | 1 | 1 | 5 | electric power facilities |
| other welding equipment | | | | | | | | | | | | | | | | | | | | | | | 1 | 1 | 1 | other welding equipment |
| other metal manufacturing machines | | | 4 | | | | | 1 | | 3 | 5 | 1 | 1 | 1 | | | 1 | 1 | | | | 2 | 2 | 1 | 24 | other metal manufacturing machines |
| power transmission mechanism | | | | | 1 | | 1 | 3 | | 1 | 1 | 1 | 1 | | | 1 | 3 | 1 | 2 | 1 | 2 | 3 | | | 22 | power transmission mechanism |
| pressure vessel | | | 2 | | 1 | | 1 | 1 | 1 | 2 | | 1 | 1 | 1 | 1 | 3 | 1 | 2 | | 1 | 2 | | | | 21 | pressure vessel |
| industrial dryer | | | 1 | | | | 1 | 1 | 1 | | 1 | 1 | 1 | 2 | 1 | | 1 | 1 | 3 | | 1 | 1 | 2 | | 19 | industrial dryer |
| wood planer machine | | | 3 | | | | | 1 | 1 | 4 | 1 | | | 2 | 2 | | 1 | 1 | | | 1 | 1 | | | 18 | wood planer machine |
| other construction machines | | | 3 | | | | 1 | | | | | | | 5 | 1 | 1 | | | 1 | | | 1 | 1 | 1 | 15 | other construction machines |
| railway vehicle | | | 1 | | | | | 1 | | 1 | | 2 | | 1 | | 2 | | | | | | | 4 | | 12 | railway vehicle |
| timbering | | | | | 2 | | 1 | 1 | | | | | 1 | 1 | | | 2 | | | | | 1 | 2 | | 11 | timbering |
| explosive substance | | | | | | | | | | 1 | | | 1 | 2 | 4 | | | 1 | | | | | 2 | | 11 | explosive substance |
| excavating machine | | | | | | | 1 | | 1 | | | | 1 | | 1 | 1 | | | | 1 | 1 | | | | 7 | excavating machine |
| slinging tool | | | | | | | | | | 1 | | | | 2 | | | | | | | 1 | 1 | 1 | | 6 | slinging tool |
| band sawing machine | | | | | | | 1 | | | | | | | | | 1 | | | | | 2 | | 1 | | 5 | band sawing machine |

| | | | | | | | | | | | | | | | | | | | | | | | | | | |
|----------------------|-------|-------|-------|-------|-------|-------|-------|-------|-------|-------|-------|-------|-------|-------|-------|--------|--------|--------|--------|--------|--------|--------|--------|--------|---------|----------------------|
| 60 years old or more | 384 | 384 | 487 | 475 | 656 | 705 | 754 | 869 | 935 | 1,179 | 1,391 | 1,561 | 1,854 | 1,987 | 2,171 | 2,325 | 2,666 | 3,041 | 3,360 | 3,930 | 4,256 | 5,418 | 7,167 | 5,823 | 53,778 | 60 years old or more |
| 50-59 | 964 | 1,082 | 1,303 | 1,451 | 1,590 | 1,795 | 1,870 | 2,155 | 2,267 | 2,401 | 2,361 | 2,509 | 2,697 | 2,745 | 2,940 | 3,015 | 3,105 | 3,421 | 3,519 | 3,816 | 3,849 | 5,332 | 7,176 | 4,930 | 68,293 | 50-59 |
| 40-49 | 767 | 858 | 1,007 | 1,081 | 1,222 | 1,387 | 1,457 | 1,530 | 1,611 | 1,671 | 1,648 | 1,789 | 1,989 | 2,060 | 2,046 | 2,239 | 2,222 | 2,393 | 2,464 | 2,592 | 2,576 | 4,043 | 5,986 | 3,083 | 49,721 | 40-49 |
| 30-39 | 561 | 642 | 751 | 814 | 977 | 984 | 1,114 | 1,228 | 1,272 | 1,388 | 1,347 | 1,504 | 1,477 | 1,594 | 1,584 | 1,622 | 1,548 | 1,541 | 1,565 | 1,636 | 1,665 | 2,849 | 4,418 | 1,815 | 35,896 | 30-39 |
| 20-29 | 824 | 891 | 1,000 | 1,052 | 1,141 | 1,182 | 1,144 | 1,235 | 1,202 | 1,241 | 1,127 | 1,110 | 1,152 | 1,170 | 1,155 | 1,072 | 1,108 | 1,053 | 1,134 | 1,171 | 1,159 | 2,580 | 4,279 | 1,508 | 31,690 | 20-29 |
| 19 years old or less | 31 | 40 | 37 | 38 | 42 | 58 | 65 | 44 | 55 | 50 | 47 | 58 | 62 | 79 | 68 | 69 | 59 | 64 | 64 | 63 | 54 | 64 | 127 | 78 | 1,416 | 19 years old or less |
| total | 3,531 | 3,897 | 4,585 | 4,911 | 5,628 | 6,111 | 6,404 | 7,061 | 7,342 | 7,930 | 7,921 | 8,531 | 9,231 | 9,635 | 9,964 | 10,342 | 10,708 | 11,513 | 12,106 | 13,208 | 13,559 | 20,286 | 29,153 | 17,237 | 240,794 | total |

Transition of workers' number of workplace of fatal and non-fatal accidents in 13 health and hygiene service in Japan (1999-2022)

| | | | | | | | | | | | | | | | | | | | | | | | | | | |
|---------------------|-------|-------|-------|-------|-------|-------|-------|-------|-------|-------|-------|-------|-------|-------|-------|--------|--------|--------|--------|--------|--------|--------|--------|--------|---------|---------------------|
| Workers scale | 1999 | 2000 | 2001 | 2002 | 2003 | 2004 | 2005 | 2006 | 2007 | 2008 | 2009 | 2010 | 2011 | 2012 | 2013 | 2014 | 2015 | 2016 | 2017 | 2018 | 2019 | 2020 | 2021 | 2022 | total | Workers scale |
| 10-29 | 504 | 558 | 660 | 694 | 853 | 976 | 1,064 | 1,211 | 1,259 | 1,353 | 1,476 | 1,621 | 1,768 | 1,847 | 2,096 | 2,156 | 2,356 | 2,595 | 2,807 | 3,028 | 3,216 | 4,340 | 6,254 | 4,360 | 49,052 | 10-29 |
| 100-299 | 1,126 | 1,215 | 1,426 | 1,541 | 1,659 | 1,795 | 1,836 | 1,980 | 2,087 | 2,159 | 2,190 | 2,304 | 2,377 | 2,416 | 2,560 | 2,593 | 2,507 | 2,690 | 2,725 | 2,856 | 2,973 | 4,176 | 6,354 | 3,496 | 59,041 | 100-299 |
| 50-99 | 662 | 744 | 936 | 1,043 | 1,165 | 1,336 | 1,345 | 1,508 | 1,548 | 1,740 | 1,646 | 1,803 | 1,859 | 2,039 | 2,019 | 2,016 | 2,200 | 2,273 | 2,320 | 2,551 | 2,717 | 3,644 | 4,900 | 3,229 | 47,243 | 50-99 |
| 30-49 | 406 | 473 | 508 | 585 | 697 | 749 | 761 | 892 | 990 | 1,025 | 1,102 | 1,211 | 1,396 | 1,446 | 1,503 | 1,655 | 1,616 | 1,819 | 1,957 | 2,216 | 2,178 | 2,958 | 4,298 | 2,912 | 35,353 | 30-49 |
| 300 workers or more | 544 | 575 | 680 | 675 | 820 | 853 | 930 | 943 | 913 | 1,019 | 897 | 939 | 1,131 | 1,151 | 1,069 | 1,096 | 1,164 | 1,229 | 1,272 | 1,506 | 1,360 | 3,787 | 5,421 | 1,825 | 31,799 | 300 workers or more |
| 9 workers or less | 289 | 332 | 375 | 373 | 434 | 402 | 468 | 527 | 545 | 634 | 610 | 653 | 700 | 736 | 717 | 826 | 865 | 907 | 1,025 | 1,051 | 1,115 | 1,381 | 1,926 | 1,415 | 18,306 | 9 workers or less |
| total | 3,531 | 3,897 | 4,585 | 4,911 | 5,628 | 6,111 | 6,404 | 7,061 | 7,342 | 7,930 | 7,921 | 8,531 | 9,231 | 9,635 | 9,964 | 10,342 | 10,708 | 11,513 | 12,106 | 13,208 | 13,559 | 20,286 | 29,153 | 17,237 | 240,794 | total |

Transition of occurred months of fatal and non-fatal accidents in 13 health and hygiene service in Japan (1999-2022)

| | | | | | | | | | | | | | | | | | | | | | | | | | | |
|---------|------|------|------|------|------|------|------|------|------|------|------|------|------|------|------|------|-------|-------|-------|-------|-------|-------|-------|-------|--------|---------|
| Month | 1999 | 2000 | 2001 | 2002 | 2003 | 2004 | 2005 | 2006 | 2007 | 2008 | 2009 | 2010 | 2011 | 2012 | 2013 | 2014 | 2015 | 2016 | 2017 | 2018 | 2019 | 2020 | 2021 | 2022 | total | Month |
| January | 285 | 331 | 426 | 407 | 472 | 529 | 577 | 654 | 589 | 660 | 707 | 768 | 824 | 896 | 947 | 877 | 905 | 1,094 | 1,110 | 1,309 | 1,134 | 1,203 | 5,148 | 1,686 | 23,538 | January |
| June | 320 | 353 | 425 | 445 | 501 | 577 | 558 | 616 | 666 | 790 | 784 | 745 | 801 | 776 | 880 | 918 | 928 | 1,016 | 1,013 | 1,140 | 1,205 | 1,577 | 1,738 | 1,535 | 20,307 | June |
| July | 338 | 338 | 393 | 442 | 515 | 552 | 555 | 661 | 682 | 735 | 782 | 760 | 752 | 871 | 877 | 970 | 1,047 | 1,034 | 1,078 | 1,223 | 1,304 | 1,711 | 1,848 | 1,512 | 20,980 | July |
| October | 280 | 334 | 431 | 418 | 515 | 504 | 538 | 618 | 616 | 680 | 622 | 690 | 737 | 795 | 868 | 811 | 877 | 943 | 1,060 | 1,135 | 1,197 | 1,566 | 1,566 | 1,476 | 19,277 | October |
| May | 295 | 301 | 428 | 439 | 511 | 511 | 535 | 633 | 652 | 678 | 696 | 694 | 750 | 819 | 778 | 880 | 890 | 963 | 980 | 1,133 | 1,119 | 1,547 | 2,870 | 1,434 | 20,536 | May |
| August | 336 | 347 | 392 | 432 | 490 | 509 | 545 | 605 | 683 | 659 | 683 | 733 | 853 | 877 | 875 | 896 | 904 | 1,014 | 1,032 | 1,136 | 1,257 | 1,824 | 2,891 | 1,418 | 21,391 | August |

| | | | | | | | | | | | | | | | | | | | | | | | | | | |
|-----------|-------|-------|-------|-------|-------|-------|-------|-------|-------|-------|-------|-------|-------|-------|-------|--------|--------|--------|--------|--------|--------|--------|--------|--------|---------|-----------|
| March | 285 | 336 | 321 | 402 | 458 | 529 | 512 | 568 | 598 | 596 | 626 | 725 | 884 | 788 | 803 | 818 | 843 | 893 | 998 | 1,003 | 1,058 | 1,345 | 2,245 | 1,418 | 19,052 | March |
| April | 290 | 293 | 346 | 376 | 424 | 482 | 517 | 503 | 583 | 581 | 631 | 699 | 692 | 762 | 843 | 825 | 908 | 913 | 949 | 1,041 | 1,097 | 1,883 | 3,111 | 1,409 | 20,158 | April |
| September | 290 | 319 | 406 | 414 | 454 | 520 | 497 | 572 | 619 | 683 | 650 | 664 | 787 | 792 | 782 | 833 | 886 | 908 | 961 | 1,116 | 1,098 | 1,624 | 1,868 | 1,388 | 19,131 | September |
| November | 261 | 294 | 319 | 408 | 417 | 442 | 567 | 509 | 532 | 558 | 589 | 661 | 713 | 703 | 702 | 787 | 849 | 923 | 933 | 1,007 | 1,061 | 1,938 | 1,369 | 1,373 | 17,915 | November |
| February | 304 | 330 | 338 | 363 | 428 | 486 | 510 | 580 | 600 | 753 | 624 | 767 | 762 | 881 | 816 | 957 | 868 | 971 | 1,065 | 1,084 | 1,076 | 1,135 | 3,102 | 1,325 | 20,125 | February |
| December | 247 | 321 | 360 | 365 | 443 | 470 | 493 | 542 | 522 | 557 | 527 | 625 | 676 | 675 | 793 | 770 | 803 | 841 | 927 | 881 | 953 | 2,933 | 1,397 | 1,263 | 18,384 | December |
| total | 3,531 | 3,897 | 4,585 | 4,911 | 5,628 | 6,111 | 6,404 | 7,061 | 7,342 | 7,930 | 7,921 | 8,531 | 9,231 | 9,635 | 9,964 | 10,342 | 10,708 | 11,513 | 12,106 | 13,208 | 13,559 | 20,286 | 29,153 | 17,237 | 240,794 | total |

Transition of prefectures of fatal and non-fatal accidents in 13 health and hygiene service in Japan (1999-2022)

| Prefecture | 1999 | 2000 | 2001 | 2002 | 2003 | 2004 | 2005 | 2006 | 2007 | 2008 | 2009 | 2010 | 2011 | 2012 | 2013 | 2014 | 2015 | 2016 | 2017 | 2018 | 2019 | 2020 | 2021 | 2022 | total | Prefecture |
|------------|------|------|------|------|------|------|------|------|------|------|------|------|------|------|------|------|------|-------|-------|-------|-------|-------|-------|-------|--------|------------|
| Tokyo | 256 | 283 | 353 | | 479 | | 579 | 585 | 632 | 673 | 706 | 726 | 747 | 826 | 820 | 842 | 894 | 1,007 | 1,001 | 1,110 | 1,194 | 2,032 | 3,436 | 1,442 | 20,623 | Tokyo |
| Osaka | 277 | 313 | 400 | | 483 | | 530 | 566 | 574 | 671 | 604 | 732 | 689 | 761 | 762 | 731 | 791 | 880 | 944 | 986 | 1,016 | 1,470 | 2,870 | 1,301 | 18,351 | Osaka |
| Kanagawa | 207 | 220 | 277 | | 321 | | 395 | 446 | 464 | 481 | 545 | 589 | 636 | 633 | 702 | 691 | 713 | 791 | 792 | 801 | 909 | 1,441 | 1,929 | 1,230 | 15,213 | Kanagawa |
| Fukuoka | 262 | 284 | 301 | | 297 | | 364 | 358 | 400 | 404 | 404 | 409 | 436 | 461 | 484 | 532 | 624 | 609 | 706 | 709 | 731 | 1,102 | 1,583 | 917 | 12,377 | Fukuoka |
| Saitama | 100 | 114 | 134 | | 165 | | 223 | 261 | 277 | 304 | 304 | 351 | 328 | 362 | 397 | 412 | 426 | 488 | 500 | 567 | 561 | 944 | 1,520 | 841 | 9,579 | Saitama |
| Hokkaido | 240 | 232 | 238 | | 277 | | 319 | 361 | 392 | 376 | 389 | 403 | 457 | 438 | 467 | 520 | 548 | 566 | 597 | 616 | 640 | 1,470 | 1,558 | 836 | 11,940 | Hokkaido |
| Chiba | 92 | 100 | 141 | | 211 | | 230 | 281 | 242 | 358 | 341 | 389 | 365 | 447 | 427 | 427 | 438 | 441 | 507 | 535 | 608 | 905 | 1,411 | 762 | 9,658 | Chiba |
| Aichi | 139 | 153 | 147 | | 203 | | 222 | 252 | 255 | 254 | 272 | 286 | 311 | 335 | 387 | 413 | 425 | 463 | 472 | 561 | 542 | 847 | 1,190 | 727 | 8,856 | Aichi |
| Hyogo | 131 | 149 | 192 | | 240 | | 273 | 281 | 298 | 353 | 313 | 346 | 394 | 402 | 412 | 423 | 475 | 471 | 502 | 510 | 608 | 1,036 | 1,385 | 697 | 9,891 | Hyogo |
| Shizuoka | 75 | 74 | 112 | | 134 | | 184 | 212 | 180 | 204 | 219 | 229 | 236 | 239 | 270 | 294 | 283 | 316 | 337 | 367 | 376 | 436 | 600 | 467 | 5,844 | Shizuoka |
| Hiroshima | 101 | 109 | 130 | | 145 | | 187 | 185 | 208 | 222 | 201 | 242 | 262 | 250 | 274 | 293 | 322 | 302 | 343 | 354 | 349 | 462 | 558 | 401 | 5,900 | Hiroshima |
| Kyoto | 122 | 123 | 158 | | 180 | | 227 | 252 | 211 | 219 | 258 | 219 | 251 | 277 | 320 | 243 | 294 | 276 | 272 | 288 | 317 | 459 | 650 | 389 | 6,005 | Kyoto |
| Kagoshima | 89 | 80 | 92 | | 129 | | 122 | 140 | 166 | 160 | 131 | 171 | 159 | 199 | 172 | 200 | 218 | 290 | 281 | 282 | 288 | 368 | 490 | 348 | 4,575 | Kagoshima |
| Kumamoto | 96 | 119 | 128 | | 126 | | 109 | 136 | 161 | 132 | 142 | 196 | 180 | 169 | 178 | 190 | 203 | 180 | 212 | 252 | 282 | 372 | 440 | 311 | 4,314 | Kumamoto |
| Nagasaki | 74 | 53 | 52 | | 101 | | 126 | 135 | 117 | 189 | 146 | 119 | 159 | 168 | 173 | 173 | 179 | 218 | 213 | 241 | 259 | 296 | 438 | 306 | 3,935 | Nagasaki |
| Miyagi | 49 | 55 | 83 | | 107 | | 122 | 151 | 159 | 155 | 135 | 177 | 322 | 186 | 214 | 223 | 189 | 213 | 229 | 261 | 242 | 306 | 470 | 300 | 4,348 | Miyagi |
| Ibaraki | 59 | 51 | 57 | | 75 | | 98 | 110 | 104 | 127 | 115 | 119 | 154 | 163 | 163 | 169 | 185 | 197 | 185 | 254 | 232 | 361 | 491 | 298 | 3,767 | Ibaraki |

| | | | | | | | | | | | | | | | | | | | | | | | | | | |
|-----------|-------|-------|-------|-------|-------|-------|-------|-------|-------|-------|-------|-------|-------|-------|-------|--------|--------|--------|--------|--------|--------|--------|--------|--------|---------|-----------|
| Yamanashi | 19 | 31 | 26 | | 44 | | 41 | 46 | 52 | 56 | 56 | 50 | 64 | 65 | 73 | 68 | 78 | 72 | 75 | 87 | 93 | 119 | 113 | 110 | 1,438 | Yamanashi |
| Kagawa | 39 | 44 | 43 | | 57 | | 51 | 64 | 61 | 65 | 54 | 59 | 62 | 62 | 80 | 80 | 95 | 80 | 85 | 99 | 104 | 176 | 184 | 108 | 1,752 | Kagawa |
| Shimane | 41 | 47 | 52 | | 60 | | 47 | 75 | 68 | 62 | 76 | 71 | 81 | 89 | 85 | 91 | 89 | 113 | 111 | 105 | 94 | 114 | 143 | 104 | 1,818 | Shimane |
| Tottori | 19 | 15 | 15 | | 20 | | 27 | 36 | 39 | 40 | 25 | 30 | 45 | 43 | 30 | 46 | 46 | 45 | 58 | 59 | 47 | 88 | 87 | 71 | 931 | Tottori |
| total | 3,531 | 3,897 | 4,585 | 4,911 | 5,628 | 6,111 | 6,404 | 7,061 | 7,342 | 7,930 | 7,921 | 8,531 | 9,231 | 9,635 | 9,964 | 10,342 | 10,708 | 11,513 | 12,106 | 13,208 | 13,559 | 20,286 | 29,153 | 17,237 | 240,794 | total |

Data Source : <https://anzeninfo.mhlw.go.jp/user/anzen/tok/anst00.html> MHLW, Jaan

Return to https://www.jisha.or.jp/english/statistics/202312_05.html