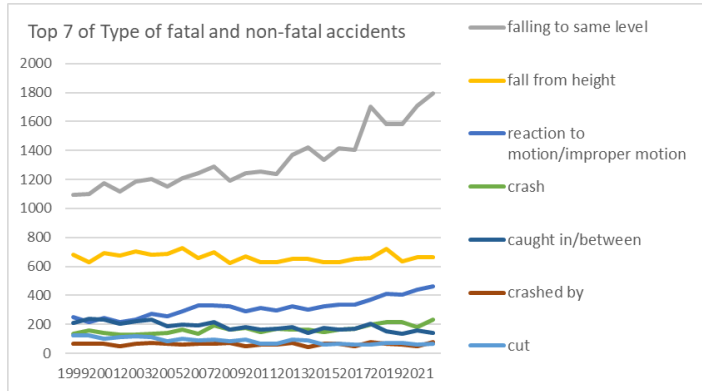
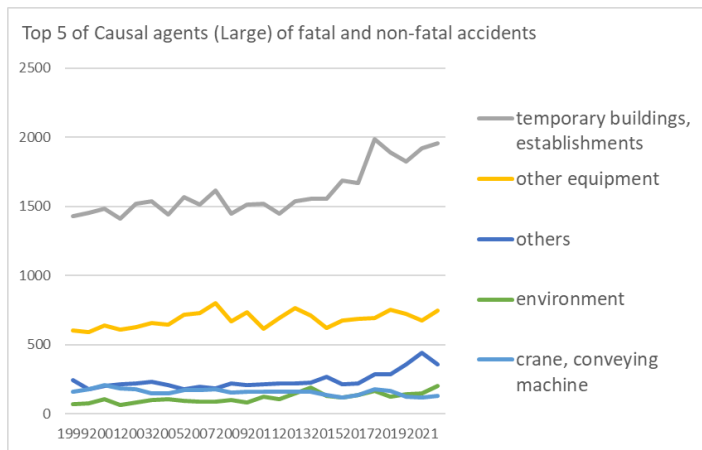


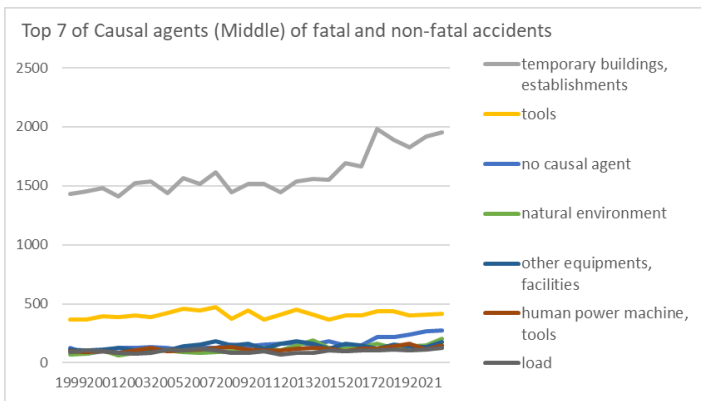
Transition of fatal and non-fatal accidents in 150101 building maintenance service in Japan (1999-2022)



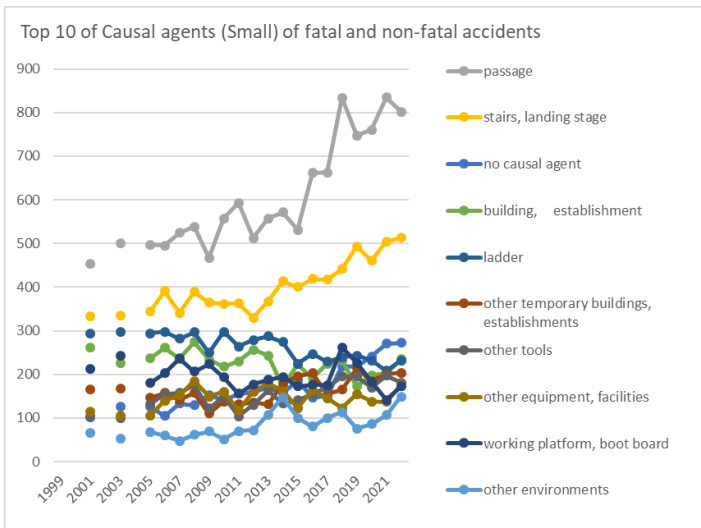
Transition of Top 7 of Type of fatal and non-fatal accidents in 150101 building maintenance service in Japan (1999-2022)



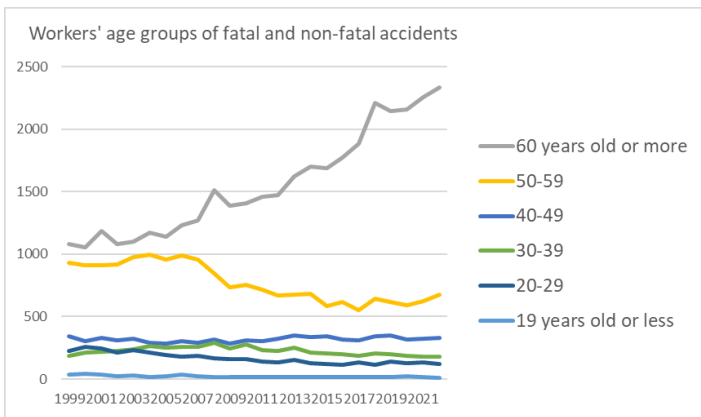
Transition of Top 5 of Causal agents (Large) of fatal and non-fatal accidents in 150101 building maintenance service in Japan (1999-2022)



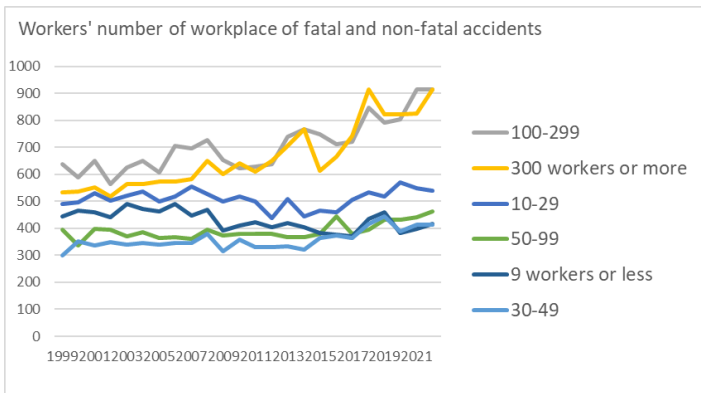
Transition of Top 7 of Causal agents (Middle) of fatal and non-fatal accidents in 150101 building maintenance service in Japan (1999-2022)



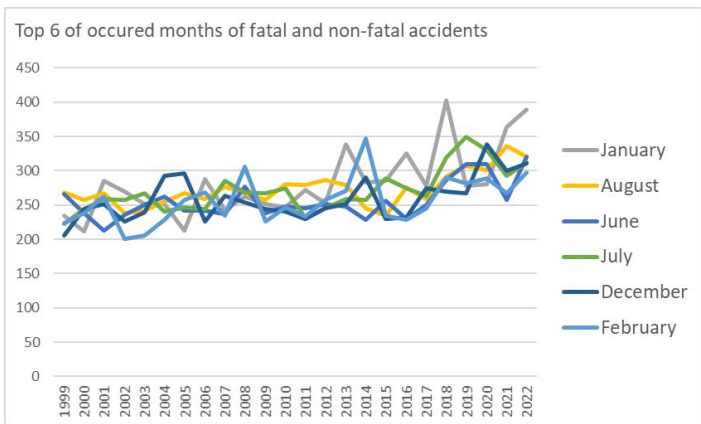
Transition of Top 10 of Causal agents (Small) of fatal and non-fatal accidents in 150101 building maintenance service in Japan (1999-2022)



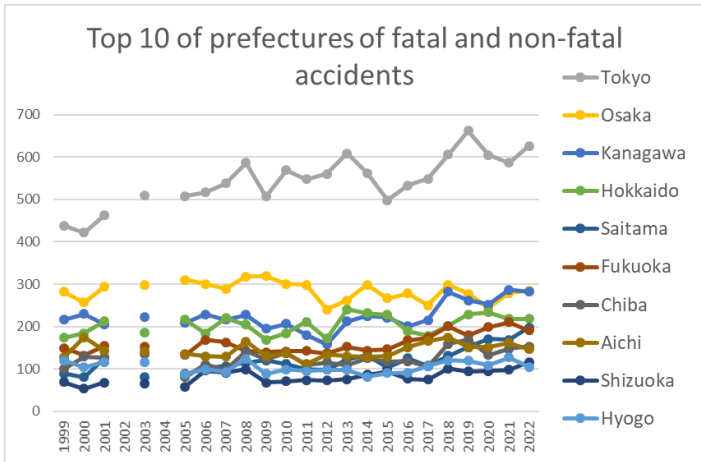
Transition of workers' age groups of fatal and non-fatal accidents in 150101 building maintenance service in Japan (1999-2022)



Transition of workers' number of workplace of fatal and non-fatal accidents in 150101 building maintenance service in Japan (1999-2022)



Transition of Top 6 of occurred months of fatal and non-fatal accidents in 150101 building maintenance service in Japan (1999-2022)



Transition of Top 10 of prefectures of fatal and non-fatal accidents in 150101 building maintenance service in Japan (1999-2022)

Transition of Type of fatal and non-fatal accidents in 150101 building maintenance service in Japan (1999-2022)

Type of accidents	1999	2000	2001	2002	2003	2004	2005	2006	2007	2008	2009	2010	2011	2012	2013	2014	2015	2016	2017	2018	2019	2020	2021	2022	total	Type of accidents	
falling to same level	1,092	1,101	1,173	1,117	1,186	1,202	1,149	1,206	1,241	1,292	1,192	1,242	1,255	1,240	1,371	1,422	1,334	1,414	1,405	1,705	1,585	1,585	1,709	1,795	32,013	falling to same level	
fall from height	679	628	694	676	704	680	688	728	655	699	621	668	629	631	649	653	629	630	652	656	720	632	663	662	15,926	fall from height	
reaction to motion/improper motion	250	218	242	217	231	273	256	288	330	332	324	288	311	293	323	304	323	335	334	370	413	403	437	465	7,560	reaction to motion/improper motion	
crash	135	158	142	131	130	135	143	162	137	194	165	173	147	167	165	163	146	161	170	200	217	214	183	231	3,969	crash	
caught in/between	208	239	233	206	220	235	187	197	195	213	161	179	163	168	181	143	177	166	169	203	151	133	156	138	4,421	caught in/between	
crashed by	68	66	65	49	65	70	64	62	66	66	70	48	58	59	69	44	64	68	51	78	64	58	48	76	1,496	crashed by	
cut	126	123	101	110	119	112	84	100	87	96	82	96	66	68	95	88	62	68	61	58	71	74	59	66	2,072	cut	
struck by flying or falling object	71	80	75	74	82	75	82	76	65	68	64	64	73	51	56	66	79	55	56	54	58	63	50	58	1,595	struck by flying or falling object	
traffic accident (public																											traffic accident

road)	59	65	76	70	67	48	64	77	72	73	53	69	58	73	75	85	51	41	66	84	64	53	40	48	1,531	(public road)
contact to high/low-temperature	34	24	39	29	19	27	29	30	36	27	26	36	26	17	31	29	18	32	35	43	44	44	26	42	743	contact to high/low-temperature
contact to harmful substance	17	20	17	25	22	22	30	10	25	31	21	14	21	20	18	19	22	17	21	24	25	24	16	27	508	contact to harmful substance
others	13	12	14	13	14	25	18	20	28	14	9	11	23	20	12	19	24	16	29	18	23	82	125	20	602	others
collapse	32	21	34	32	26	37	34	26	23	29	27	27	13	24	20	27	15	18	21	25	23	20	10	17	581	collapse
unclassifiable	4	3	6	17	11	2	10	7	12	5	4	2	3	2	4	5	5	5	5	6	2	2	6	6	134	unclassifiable
injury to the sole of the foot	7	4	3	3	8	4	3	4	2	4	6	3	6	3		1	1	3	5	5	1	3	3	4	86	injury to the sole of the foot
traffic accident (others)	3	1	2		1		1	2	5	2			1	2	2	1	1	1	1	1	2	6		2	37	traffic accident (others)
electric shock	3	9	6	4	5	1	5	5	3	3	3	6	8	2	2	4	3	2	3	5	4	2	4	1	93	electric shock
drown					1				1		2	1	8				1	2	1	2	1	1	2	1	24	drown
explosion		3	1	1							1		2			1									9	explosion
burst	1			1		2							1					1			1				7	burst
fire			2		1	1			1									1					1		7	fire
total	2,802	2,775	2,925	2,775	2,912	2,951	2,847	3,000	2,984	3,148	2,831	2,927	2,872	2,840	3,073	3,074	2,955	3,036	3,085	3,537	3,469	3,399	3,538	3,659	73,414	total

Transition of Causal agents (Large) of fatal and non-fatal accidents in 150101 building maintenance service in Japan (1999-2022)

Causal (L) agents	1999	2000	2001	2002	2003	2004	2005	2006	2007	2008	2009	2010	2011	2012	2013	2014	2015	2016	2017	2018	2019	2020	2021	2022	total	Causal (L) agents
temporary buildings, establishments	1,432	1,453	1,481	1,411	1,520	1,540	1,440	1,566	1,516	1,618	1,446	1,514	1,517	1,449	1,535	1,555	1,553	1,689	1,667	1,984	1,888	1,824	1,921	1,956	38,475	temporary buildings, establishments





metal manufacturing machine	6	5	4	5	4	4	4	3	2	2	5	1	5	1	6	2	2	5		2	3	1	3	3	78	metal manufacturing machine
kiln, caldron	2	3		3	1	2	2	2	2	1	1	1	3	1		1	1		1	1	4			1	33	kiln, caldron
pressure vessel	4	2	8	3	3	3	3	2	4		5	4	2	1	8	2			1		1	1			57	pressure vessel
engine	3	1		1							1							1				1			8	engine
welding equipment									1		2												1		4	welding equipment
chemical facilities				1																					1	chemical facilities
mobile silviculture machine																										mobile silviculture machine
total	2,802	2,775	2,925	2,775	2,912	2,951	2,847	3,000	2,984	3,148	2,831	2,927	2,872	2,840	3,073	3,074	2,955	3,036	3,085	3,537	3,469	3,399	3,538	3,659	73,414	total

Transition of Causal agents (Small) of fatal and non-fatal accidents in 150101 building maintenance service in Japan (1999-2022)

Causal (S) agents	1999	2000	2001	2002	2003	2004	2005	2006	2007	2008	2009	2010	2011	2012	2013	2014	2015	2016	2017	2018	2019	2020	2021	2022	total	Causal (S) agents
passage			453		500		497	495	524	538	467	557	593	512	557	571	531	662	663	834	747	760	835	802	12,098	passage
stairs, landing stage			333		334		344	391	341	389	364	362	363	330	367	413	400	419	417	442	493	460	505	513	7,980	stairs, landing stage
no causal agent			101		126		127	105	133	129	153	140	156	159	170	157	186	147	149	219	217	241	270	272	3,357	no causal agent
building, establishment			262		225		237	261	236	274	234	218	230	256	243	172	223	191	224	232	173	198	202	235	4,526	building, establishment
ladder			293		298		294	298	282	297	250	298	264	279	287	274	224	247	229	239	243	232	208	232	5,268	ladder
other temporary buildings, establishments			165		167		146	158	142	158	111	138	131	136	131	179	196	203	155	165	214	185	201	204	3,285	other temporary buildings, establishments
other tools			103		100		131	155	158	176	122	149	104	130	163	133	141	155	170	195	195	170	197	181	3,028	other tools







scaffolding			18		20		12	14	12	16	17	14	13	13	11	5	10	11	6	13	10	6	9	2	232	scaffolding
other electrical equipment			10		5		6	9	8	3	4	2	9	3	1	3	2	5	5	5	3	11	6	2	102	other electrical equipment
gondola			3		3		6	5	3	7	3	4	3	2	2		1	2	3	3	2	1	4	2	59	gondola
grinding machine, buffing machine			2		2		3	2		1	4	1	3		4	2	2	3		1	1	1	2	2	36	grinding machine, buffing machine
human power machine			2		1						2	1			3		2	2	1		4	2		2	22	human power machine
leveling, transporting or loading machine					1		1			2			1		1				1		1	1	2		11	leveling, transporting or loading machine
stone, sand, substance			7		3		2	5	7	4	3	2	5	7	6	2	3	1	4	5	4	8	4	1	83	stone, sand, substance
electric power facilities			1		4		3		3	2	1	4	4	1	2	2	1	2	5	4	2	2	3	1	47	electric power facilities
other powered crane							2	2	1	1	6		2	2	1	1	3	1		2	4		1	1	30	other powered crane
crane			3		1		3	1	1	1	1	3				1				2		1	2	1	21	crane
other metal manufacturing machines			2		1		1		1	1	1		2	1	2			2		1	1		1	1	18	other metal manufacturing machines
other woodworking machines			2		1			1	2	1		1		2		1		1	1			1	1	1	17	other woodworking machines
excavating machine			1				3		1	1	1		1	1			1		1	1		2	1	1	16	excavating machine
kiln, caldron							1	2		1	1	1	3	1			1		1		2			1	15	kiln, caldron
slinging tool					2			2	1				1		2	1				1	1		1	1	13	slinging tool
mixer, grinder			2		1				1		1	1	1	1	1	2	1		4		1	1	1		19	mixer, grinder







60 years old or more	1,082	1,052	1,188	1,082	1,104	1,171	1,139	1,234	1,272	1,515	1,388	1,405	1,460	1,476	1,625	1,705	1,687	1,775	1,884	2,212	2,147	2,157	2,260	2,334	37,354	60 years old or more
50-59	929	911	914	917	980	997	956	992	959	844	732	757	716	670	677	680	585	615	555	643	616	594	627	679	18,545	50-59
40-49	346	301	328	310	325	292	285	304	290	315	287	307	304	325	351	334	345	315	308	342	351	317	323	331	7,636	40-49
30-39	189	214	217	228	240	262	251	260	255	290	247	278	233	223	251	212	205	202	186	208	196	183	181	181	5,392	30-39
20-29	223	257	245	213	233	211	194	177	183	165	163	161	143	132	151	126	120	114	133	114	143	128	132	122	3,983	20-29
19 years old or less	33	40	33	25	30	18	22	33	25	19	14	19	16	14	18	17	13	15	19	18	16	20	15	12	504	19 years old or less
total	2,802	2,775	2,925	2,775	2,912	2,951	2,847	3,000	2,984	3,148	2,831	2,927	2,872	2,840	3,073	3,074	2,955	3,036	3,085	3,537	3,469	3,399	3,538	3,659	73,414	total

Transition of workers' number of workplace of fatal and non-fatal accidents in 150101 building maintenance service in Japan (1999-2022)

Workers scale	1999	2000	2001	2002	2003	2004	2005	2006	2007	2008	2009	2010	2011	2012	2013	2014	2015	2016	2017	2018	2019	2020	2021	2022	total	Workers scale
100-299	638	589	649	565	625	650	607	705	695	727	654	623	630	638	740	768	749	713	721	847	792	803	914	915	16,957	100-299
300 workers or more	533	536	551	519	563	563	572	572	582	650	602	640	609	650	704	767	613	666	743	914	822	822	825	913	15,931	300 workers or more
10-29	490	497	529	504	522	537	500	519	555	526	498	518	500	438	510	444	466	460	507	532	519	570	548	541	12,230	10-29
50-99	396	336	398	395	371	385	365	366	360	395	372	379	381	379	367	368	379	444	381	394	433	433	442	462	9,381	50-99
9 workers or less	444	465	461	442	491	471	464	491	446	469	391	409	422	405	420	405	384	378	369	435	459	382	397	416	10,316	9 workers or less
30-49	301	352	337	350	340	345	339	347	346	381	314	358	330	330	332	322	364	375	364	415	444	389	412	412	8,599	30-49
total	2,802	2,775	2,925	2,775	2,912	2,951	2,847	3,000	2,984	3,148	2,831	2,927	2,872	2,840	3,073	3,074	2,955	3,036	3,085	3,537	3,469	3,399	3,538	3,659	73,414	total

Transition of occurred months of fatal and non-fatal accidents in 150101 building maintenance service in Japan (1999-2022)

Month	1999	2000	2001	2002	2003	2004	2005	2006	2007	2008	2009	2010	2011	2012	2013	2014	2015	2016	2017	2018	2019	2020	2021	2022	total	Month
January	234	211	285	270	252	252	213	288	243	262	252	247	272	253	339	283	285	325	278	403	278	280	364	389	6,758	January
August	268	257	267	238	242	255	267	259	277	267	258	281	279	287	279	245	234	276	259	291	307	301	336	321	6,551	August
June	266	238	213	236	250	262	242	242	237	277	238	248	246	251	248	229	256	230	250	287	310	310	257	320	6,143	June
July	223	244	259	257	267	240	247	244	285	269	267	274	231	246	259	257	289	274	263	319	349	330	293	312	6,498	July

December	205	244	252	226	239	293	296	226	264	254	244	241	230	245	251	290	230	232	274	270	267	338	300	311	6,222	December
February	224	238	262	201	205	229	257	269	235	306	226	247	233	258	271	347	235	228	246	290	282	289	267	298	6,143	February
October	232	224	245	234	236	250	208	266	225	238	225	214	211	228	249	268	259	256	296	318	324	301	298	293	6,098	October
September	235	257	243	215	236	232	241	237	273	237	225	223	221	197	218	239	254	248	216	273	286	310	300	291	5,907	September
May	208	211	211	200	254	239	217	251	240	262	208	249	232	201	233	208	227	250	257	256	251	218	266	291	5,640	May
March	240	230	257	228	256	249	240	262	257	270	270	230	252	230	241	225	232	237	259	288	283	236	315	290	6,077	March
November	213	214	225	222	247	220	198	240	221	278	212	226	235	219	247	255	232	246	253	257	287	255	279	286	5,767	November
April	254	207	206	248	228	230	221	216	227	228	206	247	230	225	238	228	222	234	234	285	245	231	263	257	5,610	April
total	2,802	2,775	2,925	2,775	2,912	2,951	2,847	3,000	2,984	3,148	2,831	2,927	2,872	2,840	3,073	3,074	2,955	3,036	3,085	3,537	3,469	3,399	3,538	3,659	73,414	total

Transition of prefectures of fatal and non-fatal accidents in 150101 building maintenance service in Japan (1999-2022)

Prefecture	1999	2000	2001	2002	2003	2004	2005	2006	2007	2008	2009	2010	2011	2012	2013	2014	2015	2016	2017	2018	2019	2020	2021	2022	total	Prefecture
Tokyo	438	422	462		509		508	517	538	586	507	569	548	560	609	562	498	533	549	606	662	605	586	626	12,000	Tokyo
Osaka	282	257	294		299		310	301	289	318	319	301	299	240	262	299	267	278	250	299	277	244	279	285	6,249	Osaka
Kanagawa	216	230	206		222		208	229	216	228	195	207	180	158	212	225	221	201	215	282	262	252	287	282	4,934	Kanagawa
Hokkaido	174	184	212		185		216	184	220	205	169	184	211	172	240	232	228	189	178	202	229	234	218	218	4,484	Hokkaido
Saitama	89	81	125		82		88	101	107	114	120	112	99	98	123	132	103	125	108	131	151	171	169	198	2,627	Saitama
Fukuoka	149	132	154		153		133	169	163	143	140	142	143	137	152	144	146	168	174	201	179	199	210	191	3,522	Fukuoka
Chiba	100	129	127		135		81	111	98	142	123	138	110	115	109	125	117	118	106	159	169	133	147	153	2,745	Chiba
Aichi	127	175	144		142		136	130	129	165	131	137	112	134	130	128	130	151	166	175	151	151	162	146	3,152	Aichi
Shizuoka	69	53	68		66		58	96	91	99	68	71	74	73	76	86	94	77	75	101	94	95	98	116	1,798	Shizuoka
Hyogo	120	104	116		115		87	99	93	124	88	99	95	98	98	82	90	91	107	120	119	109	127	105	2,286	Hyogo
Kyoto	63	57	57		65		68	53	68	73	74	66	71	82	78	57	71	53	72	55	53	70	75	82	1,463	Kyoto
Miyagi	50	50	47		70		59	73	53	54	65	53	58	57	57	49	46	48	63	75	41	68	69	81	1,286	Miyagi
Okinawa	20	20	28		42		37	40	45	55	42	43	43	45	41	58	52	61	49	76	72	60	55	72	1,056	Okinawa





Yamaguchi	29	24	35		20		28	28	22	26	22	30	21	32	24	21	34	34	35	24	25	34	22	23	593	Yamaguchi
Akita	18	24	16		16		20	17	28	13	16	15	26	26	20	11	23	25	28	26	16	29	18	18	449	Akita
Saga	18	11	20		14		18	22	19	16	14	16	11	11	17	20	16	24	18	20	19	17	22	18	381	Saga
Wakayama	13	12	11		10		11	17	17	16	15	22	18	13	22	17	23	24	27	19	18	12	23	17	377	Wakayama
Fukui	13	14	14		11		16	15	9	19	10	10	13	12	8	21	12	7	12	19	15	30	21	16	317	Fukui
Tokushima	8	12	12		11		9	19	6	8	11	6	13	22	12	11	9	10	22	9	18	11	17	16	272	Tokushima
Tottori	12	9	13		7		12	10	12	8	9	4	10	8	8	10	9	10	13	7	14	14	11	14	224	Tottori
Kochi	18	17	18		13		10	10	27	20	16	22	12	11	8	16	17	11	12	20	15	21	22	9	345	Kochi
Shimane	7	12	9		8		17	10	7	15	8	9	9	5	17	11	13	8	7	21	7	14	7	8	229	Shimane
total	2,802	2,775	2,925	2,775	2,912	2,951	2,847	3,000	2,984	3,148	2,831	2,927	2,872	2,840	3,073	3,074	2,955	3,036	3,085	3,537	3,469	3,399	3,538	3,659	73,414	total

Data Source : <https://anzeninfo.mhlw.go.jp/user/anzen/tok/anst00.html> MHLW, Jaan

Return to [https://www.jisha.or.jp/english/statistics/202312\\_05.html](https://www.jisha.or.jp/english/statistics/202312_05.html)