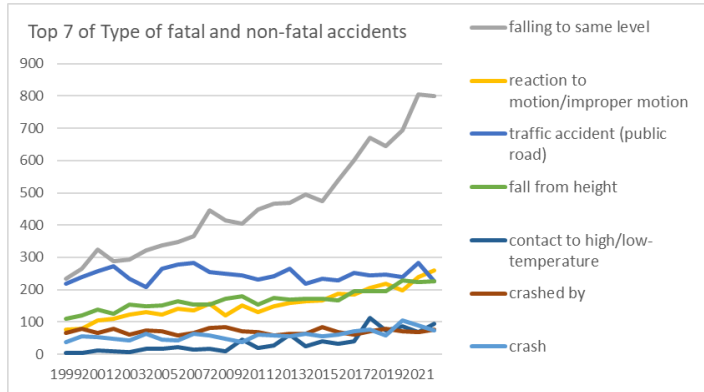
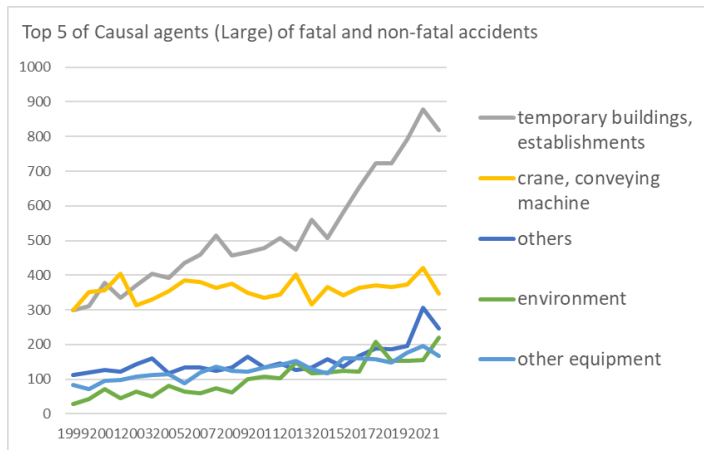


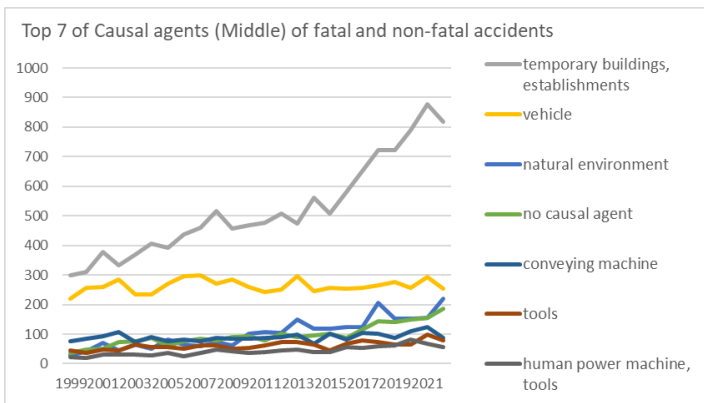
Transition of fatal and non-fatal accidents in 170201 security service in Japan (1999-2022)



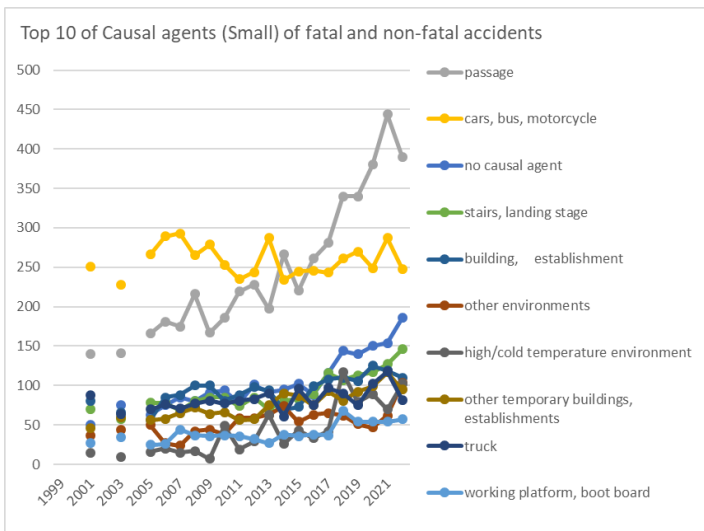
Transition of Top 7 of Type of fatal and non-fatal accidents in 170201 security service in Japan (1999-2022)



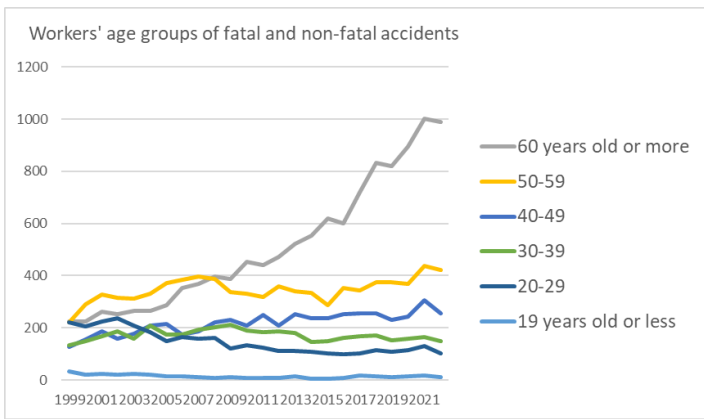
Transition of Top 5 of Causal agents (Large) of fatal and non-fatal accidents in 170201 security service in Japan (1999-2022)



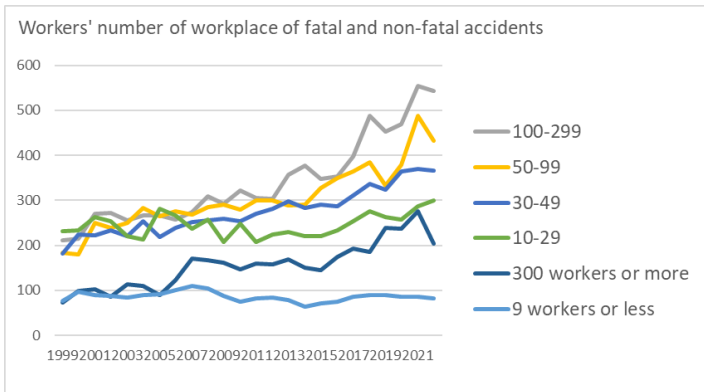
Transition of Top 7 of Causal agents (Middle) of fatal and non-fatal accidents in 170201 security service in Japan (1999-2022)



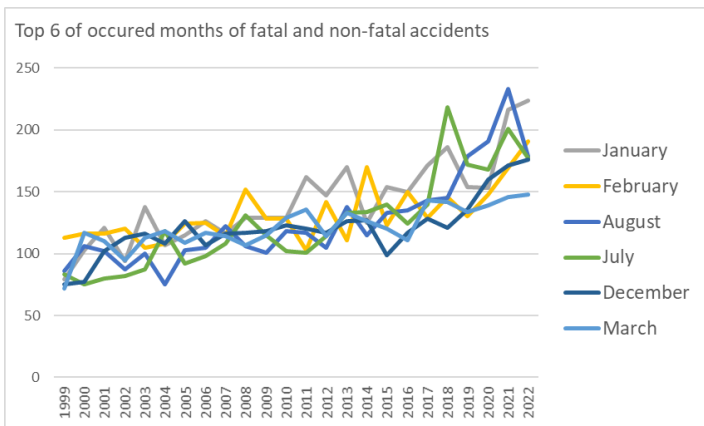
Transition of Top 10 of Causal agents (Small) of fatal and non-fatal accidents in 170201 security service in Japan (1999-2022)



Transition of workers' age groups of fatal and non-fatal accidents in 170201 security service in Japan (1999-2022)



Transition of workers' number of workplace of fatal and non-fatal accidents in 170201 security service in Japan (1999-2022)



Transition of Top 6 of occurred months of fatal and non-fatal accidents in 170201 security service in Japan (1999-2022)

caught in/between	96	98	108	110	100	125	107	106	92	100	98	95	107	83	94	86	78	88	76	65	84	79	78	71	2,224	in/between	
others	25	35	34	27	43	32	36	25	37	30	29	29	31	34	19	28	25	25	34	41	28	36	137	48	868	others	
struck by flying or falling object	35	28	42	45	38	32	30	29	43	33	28	30	35	28	34	30	32	34	40	32	24	24	29	27	782	struck by flying or falling object	
cut	12	14	10	16	12	15	7	12	15	12	13	9	11	6	10	12	14	9	14	10	12	7	11	12	275	cut	
collapse	5	8	12	10	9	20	11	14	14	13	13	8	8	7	12	13	9	13	15	11	15	5	14	9	268	collapse	
unclassifiable	27	14	24	25	27	22	10	13	16	11	11	12	6	12	8	10	8	8	9	8	9	6	7	8	311	unclassifiable	
traffic accident (others)	4	4	5	1		3	2	2	5	2	2	4	2	3	1	2	5	5	5	2		9	3	2	73	traffic accident (others)	
injury to the sole of the foot	1	1	2	1		3	1	3	2	5	3	2	1		2	1			1	4	2	2	2	1	40	injury to the sole of the foot	
contact to harmful substance		1	3	1	2	1	1	3	3	2	2	2		1			2	2	1	1	5	4	2	1	40	contact to harmful substance	
drown	2					1		3	2				8			1	2	2	2	11	3	2	1		40	drown	
fire	1						1	2		2		1						1							8	fire	
electric shock						1							1			1		1	1	1		1			7	electric shock	
explosion																1	1									2	explosion
burst			1										1													2	burst
total	956	1,047	1,196	1,171	1,144	1,215	1,213	1,264	1,310	1,378	1,297	1,324	1,324	1,349	1,420	1,386	1,401	1,472	1,603	1,760	1,698	1,792	2,059	1,930	33,709	total	

Transition of Causal agents (Large) of fatal and non-fatal accidents in 170201 security service in Japan (1999-2022)

Causal (L) agents	1999	2000	2001	2002	2003	2004	2005	2006	2007	2008	2009	2010	2011	2012	2013	2014	2015	2016	2017	2018	2019	2020	2021	2022	total	Causal (L) agents
temporary buildings, establishments	299	311	377	334	370	405	392	436	459	515	458	467	478	508	473	560	507	581	653	723	723	791	878	818	12,516	temporary buildings, establishments

tools	44	38	47	44	65	57	55	51	63	61	51	54	63	74	72	64	46	69	80	72	65	64	100	79	1,478	tools
human power machine, tools	22	20	30	31	32	29	36	25	36	49	41	36	39	45	47	40	40	55	53	59	61	83	67	56	1,032	human power machine, tools
other causal agent	45	58	55	28	41	42	45	44	36	35	34	52	46	31	32	28	49	42	46	36	38	41	150	53	1,107	other causal agent
construction machine	73	89	84	86	70	81	79	77	63	74	75	68	76	52	57	55	59	50	51	38	40	48	36	48	1,529	construction machine
load	31	21	31	41	33	33	29	27	44	40	27	15	21	20	25	37	32	40	35	35	37	21	32	40	747	load
materials	25	32	44	34	31	37	36	40	45	40	30	28	34	29	29	34	32	31	42	33	36	25	28	39	814	materials
other equipments, facilities	17	12	16	16	11	21	21	12	17	22	26	30	25	21	30	23	27	28	24	22	19	27	27	31	525	other equipments, facilities
unclassifiable	30	14	21	22	27	30	9	14	12	10	9	19	10	14	4	10	6	6	6	9	8	4	3	7	304	unclassifiable
crane	2	10	4	11	6	6	6	7	4	6	5	5	6	4	9	4	9	7	3	5	2	6	4	4	135	crane
general machine	1	1	3	3	7	4	6	4	3	4	6	3	1	3	3	1	8	3	4	6	4	2	3	3	86	general machine
woodworking machine	2	3	2	2		1	1	2		2	2	1				2	2	2	1	1	1	2	1	2	32	woodworking machine
electric equipment	1	1	1	5		5	2	1	2	4	5	2	7	1	4	2	4	8	2	4	3	3	2	1	70	electric equipment
welding equipment											1													1	2	welding equipment
hazards, harmful substances	1	3	4	2	2	2	1	6	3	4	2	2		1		1	1	2	3	1	2	3	1		47	hazards, harmful substances
metal manufacturing					1	1	1		1	1		2		1	1							1			10	metal manufacturing

environment																										environment
other temporary buildings, establishments			46		60		56	58	65	72	64	66	56	57	75	90	87	75	93	81	92	99	117	95	1,504	other temporary buildings, establishments
truck			88		64		70	76	71	77	81	77	81	83	90	61	96	75	97	90	75	102	118	82	1,654	truck
working platform, boot board			27		34		25	26	44	37	36	37	36	32	27	38	36	38	37	68	54	54	54	57	797	working platform, boot board
other tools			22		28		21	17	26	32	21	16	25	33	34	34	28	42	53	43	41	41	68	55	680	other tools
other causal agent			55		41		45	44	36	35	34	52	46	31	32	28	49	42	46	36	38	41	150	53	934	other causal agent
human power hauling equipment			28		29		33	22	32	46	38	32	38	43	43	38	37	50	47	57	58	76	61	46	854	human power hauling equipment
load			26		30		27	25	40	37	22	14	20	18	22	33	30	35	28	33	36	18	29	36	559	load
other equipment, facilities			16		11		21	12	17	22	26	30	25	21	30	23	27	28	24	22	19	27	27	31	459	other equipment, facilities
excavating machine			60		49		47	49	46	45	52	46	42	36	38	34	36	27	27	29	28	33	24	30	778	excavating machine
ladder			25		35		33	34	37	28	29	37	36	39	38	30	18	27	26	29	24	23	32	24	604	ladder
opening			8		8		9	4	13	9	2	8	4	8	7	12	6	16	14	14	18	12	15	16	203	opening
metal material			23		19		16	20	20	20	15	14	19	14	17	14	19	18	30	20	19	12	11	15	355	metal material
other materials			9		3		7	8	11	13	10	6	8	8	5	10	2	9	3	7	8	2	10	11	150	other materials
natural ground, rock			16		10		12	13	13	12	8	8	12	11	15	9	15	18	10	10	16	7	14	9	238	natural ground, rock
stone, sand, substance			7		3		8	6	9	4	2	2	4	1	5	4	7	3	6	2	4	7	5	8	97	stone, sand, substance
unclassifiable			21		27		9	14	12	10	9	19	10	14	4	10	6	6	6	9	8	4	3	7	208	unclassifiable
other vehicles			7		5		5	6	7	6	7	5	6	7	8	8	10	7	12	2	4	7	5	7	131	other vehicles
hardening machine			5		6		7	8	3	6	5	7	7	3	6	5	4	7	7	1	4	2	4	7	104	hardening machine

conveyor			1		1		1	3		1			2			1	2	1	1					1	15	conveyor
abnormal environment							2				1	1	2						1	2	1	3	1	14	abnormal environment	
crane								1	1		1		2	1	2	2		1					1	13	crane	
chain saw			1						1								1	1	1		1		1	1	9	chain saw
other woodworking machines								2			1													1	6	other woodworking machines
other welding equipment																								1	1	other welding equipment
other electrical equipment			1						2	2	4	1	2		2			5	2	1	2	2	2		28	other electrical equipment
harmful substance			2		2		1	1	3	1	2	1		1			1		1	1	2	1		20	harmful substance	
railway vehicle			2					1			1	1	1	1	2	1		3	1	3	1			18	railway vehicle	
slinging tool					2		1			1	1	1	2	2				1						11	slinging tool	
other hazards, harmful substances			1					2		2		1					1	1			1	1		10	other hazards, harmful substances	
circular sawing machine			1				1			1	1	1				1	1				1	1		9	circular sawing machine	
foundation work machine			1							1	1	1	1		1	1								7	foundation work machine	
electric power facilities								1						1			1		2	1				7	electric power facilities	
human power machine											2					1	1	1			1			7	human power machine	
other metal manufacturing					1				1	1		2												6	other metal manufacturing	

Age	1999	2000	2001	2002	2003	2004	2005	2006	2007	2008	2009	2010	2011	2012	2013	2014	2015	2016	2017	2018	2019	2020	2021	2022	total	Age
60 years old or more	225	225	263	253	264	265	288	352	367	397	388	452	442	473	523	555	619	602	719	832	821	895	1,003	988	12,211	60 years old or more
50-59	220	291	329	316	311	331	372	385	396	388	336	331	318	360	340	334	288	353	343	375	376	370	437	421	8,321	50-59
40-49	126	156	187	159	178	208	214	175	185	222	230	209	250	209	252	236	237	251	256	256	229	243	306	257	5,231	40-49
30-39	132	148	169	185	158	208	175	173	193	201	212	191	184	188	181	147	150	160	168	170	152	157	166	150	4,118	30-39
20-29	221	206	223	237	210	183	149	165	158	161	120	133	123	112	110	108	102	98	101	113	109	114	131	103	3,490	20-29
19 years old or less	32	21	25	21	23	20	15	14	11	9	11	8	7	7	14	6	5	8	16	14	11	13	16	11	338	19 years old or less
total	956	1,047	1,196	1,171	1,144	1,215	1,213	1,264	1,310	1,378	1,297	1,324	1,324	1,349	1,420	1,386	1,401	1,472	1,603	1,760	1,698	1,792	2,059	1,930	33,709	total

Transition of workers' number of workplace of fatal and non-fatal accidents in 170201 security service in Japan (1999-2022)

Workers scale	1999	2000	2001	2002	2003	2004	2005	2006	2007	2008	2009	2010	2011	2012	2013	2014	2015	2016	2017	2018	2019	2020	2021	2022	total	Workers scale
100-299	211	214	270	272	256	267	267	258	274	309	292	322	305	304	357	377	347	353	398	488	452	469	554	544	8,160	100-299
50-99	184	179	249	238	249	283	265	276	269	285	290	280	299	299	289	291	327	350	364	385	332	379	488	433	7,283	50-99
30-49	181	224	223	233	220	253	218	239	251	255	259	253	270	281	297	284	290	286	310	337	323	364	370	367	6,588	30-49
10-29	232	234	262	254	221	213	282	267	237	257	208	248	208	224	229	220	221	233	253	275	263	258	286	300	5,885	10-29
300 workers or more	72	99	102	86	114	110	89	123	170	167	161	147	160	157	169	150	145	175	192	186	238	237	276	204	3,729	300 workers or more
9 workers or less	76	97	90	88	84	89	92	101	109	105	87	74	82	84	79	64	71	75	86	89	90	85	85	82	2,064	9 workers or less
total	956	1,047	1,196	1,171	1,144	1,215	1,213	1,264	1,310	1,378	1,297	1,324	1,324	1,349	1,420	1,386	1,401	1,472	1,603	1,760	1,698	1,792	2,059	1,930	33,709	total

Transition of occurred months of fatal and non-fatal accidents in 170201 security service in Japan (1999-2022)

Month	1999	2000	2001	2002	2003	2004	2005	2006	2007	2008	2009	2010	2011	2012	2013	2014	2015	2016	2017	2018	2019	2020	2021	2022	total	Month
January	79	103	121	94	138	107	115	126	116	129	129	129	162	147	170	125	154	150	171	186	154	153	216	224	3,398	January
February	113	116	116	120	105	108	124	125	114	152	128	128	103	142	111	170	123	150	129	146	130	148	169	191	3,161	February
August	86	106	102	87	100	75	103	105	122	106	101	118	117	105	138	115	133	135	143	145	179	191	233	179	3,024	August

July	83	75	80	82	87	118	92	98	108	131	115	102	101	114	133	134	140	124	140	218	172	168	201	177	2,993	July
December	75	77	102	113	116	108	126	107	116	117	118	123	120	117	126	127	99	117	128	121	136	160	171	176	2,896	December
March	72	117	110	95	113	118	109	117	114	107	115	129	136	114	133	126	120	111	143	142	134	139	146	148	2,908	March
June	66	67	83	81	76	90	91	101	95	97	95	92	89	105	96	80	96	113	112	143	133	157	154	144	2,456	June
October	90	76	109	116	102	109	88	112	102	117	120	123	99	109	109	103	122	118	163	135	124	153	172	143	2,814	October
April	66	70	70	84	78	78	80	88	90	101	80	91	73	105	101	81	111	119	102	135	129	118	137	143	2,330	April
September	78	76	99	107	85	109	100	96	107	91	97	98	120	100	97	98	96	115	139	137	148	164	160	141	2,658	September
May	61	75	76	83	56	88	82	85	104	114	88	90	83	90	93	101	99	99	105	125	112	116	157	136	2,318	May
November	87	89	128	109	88	107	103	104	122	116	111	101	121	101	113	126	108	121	128	127	147	125	143	128	2,753	November
total	956	1,047	1,196	1,171	1,144	1,215	1,213	1,264	1,310	1,378	1,297	1,324	1,324	1,349	1,420	1,386	1,401	1,472	1,603	1,760	1,698	1,792	2,059	1,930	33,709	total

Transition of prefectures of fatal and non-fatal accidents in 170201 security service in Japan (1999-2022)

Prefecture	1999	2000	2001	2002	2003	2004	2005	2006	2007	2008	2009	2010	2011	2012	2013	2014	2015	2016	2017	2018	2019	2020	2021	2022	total	Prefecture
Tokyo	98	121	146		138		153	180	192	215	202	185	203	203	222	222	225	262	278	297	327	322	348	354	4,893	Tokyo
Kanagawa	48	61	67		74		66	70	89	68	73	86	93	77	94	88	92	92	120	116	117	126	138	129	1,984	Kanagawa
Osaka	114	138	144		120		153	131	132	171	133	141	110	119	118	112	149	121	119	131	146	155	158	122	2,937	Osaka
Aichi	42	68	55		62		60	64	76	76	66	85	71	87	85	71	84	63	100	82	76	82	97	104	1,656	Aichi
Chiba	55	47	58		41		41	55	51	57	54	46	54	66	72	66	55	64	72	109	108	74	90	104	1,439	Chiba
Saitama	30	40	30		44		49	37	54	53	50	54	59	55	65	57	52	64	75	80	80	89	118	92	1,327	Saitama
Hyogo	74	48	51		76		73	70	57	63	46	49	48	49	45	55	59	66	67	69	68	63	75	79	1,350	Hyogo
Fukuoka	44	36	71		69		70	70	53	54	59	59	58	71	64	59	64	54	64	81	68	60	78	74	1,380	Fukuoka
Hokkaido	35	35	73		45		47	46	75	63	54	60	52	60	62	58	68	78	61	59	60	92	85	73	1,341	Hokkaido
Shizuoka	12	17	32		29		31	36	34	32	31	35	34	35	36	34	45	38	45	55	53	60	67	61	852	Shizuoka
Hiroshima	43	37	40		26		37	25	32	49	34	34	30	38	33	35	29	38	38	40	34	40	40	42	794	Hiroshima
Miyagi	12	18	22		18		24	25	27	25	25	22	44	33	37	33	29	43	23	48	23	34	45	40	650	Miyagi

Yamanashi	4	2	8		7		10	12	11	7	7	6	3	5	7	6	6	5	8	13	11	11	9	13	171	Yamanashi
Saga	9	5	8		8		10	8	12	16	7	6	5	14	8	16	10	12	13	12	15	12	15	12	233	Saga
Kagawa	10	11	7		9		11	10	5	9	19	6	4	9	10	11	13	9	15	23	14	12	8	11	236	Kagawa
Akita	8	6	6		10		3	6	9	6	5	11	7	9	6	11	5	5	5	6	5	5	13	10	157	Akita
Aomori	11	10	10		16		3	12	4	4	11	9	10	9	8	5	10	14	8	11	12	10	12	9	208	Aomori
Yamagata	4	10	2		5		12	8	10	7	14	7	12	10	18	6	14	4	12	12	14	21	16	8	226	Yamagata
Toyama	11	5	10		3			12	8	5	7	5	12	14	8	9	7	6	14	14	5	14	16	8	193	Toyama
Tottori	6	7	2		5		2	6	7	7	4	4	7	5	10	5	2	3	7	3	8	8	5	8	121	Tottori
Kochi	14	13	12		14		17	5	7	11	6	9	14	10	9	12	13	10	15	11	10	6	18	5	241	Kochi
Shimane	6	5	6		12		8	8	3	2	9	8	7	10	6	6	4	8	5	10	8	8	8	4	151	Shimane
total	956	1,047	1,196	1,171	1,144	1,215	1,213	1,264	1,310	1,378	1,297	1,324	1,324	1,349	1,420	1,386	1,401	1,472	1,603	1,760	1,698	1,792	2,059	1,930	33,709	total

Data Source : <https://anzeninfo.mhlw.go.jp/user/anzen/tok/anst00.html> MHLW, Jaan

Return to https://www.jisha.or.jp/english/statistics/202312_05.html