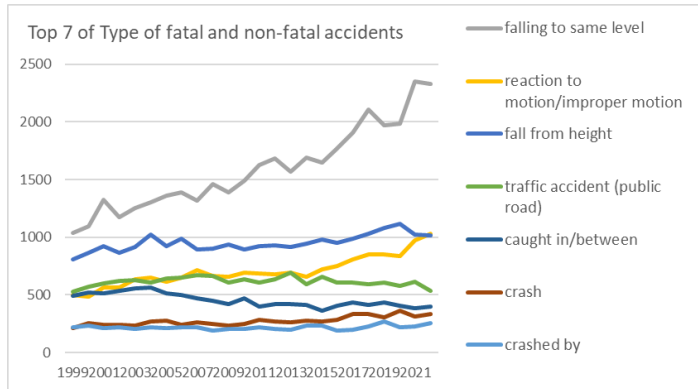
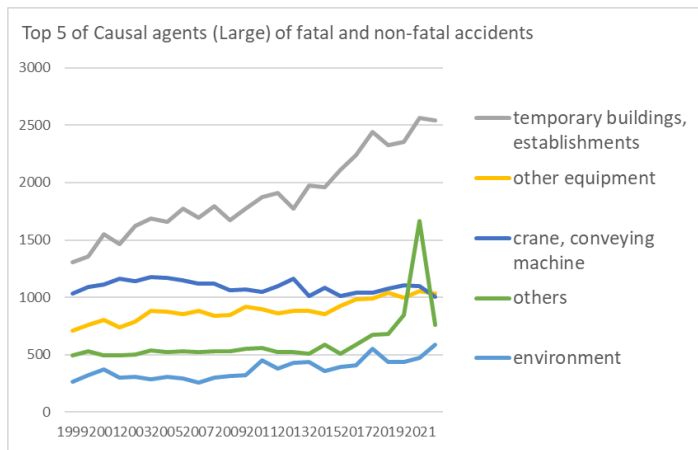


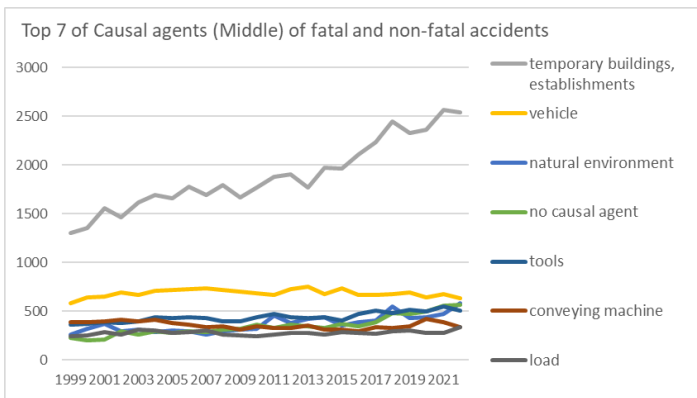
Transition of fatal and non-fatal accidents in 17 others in Japan (1999-2022)



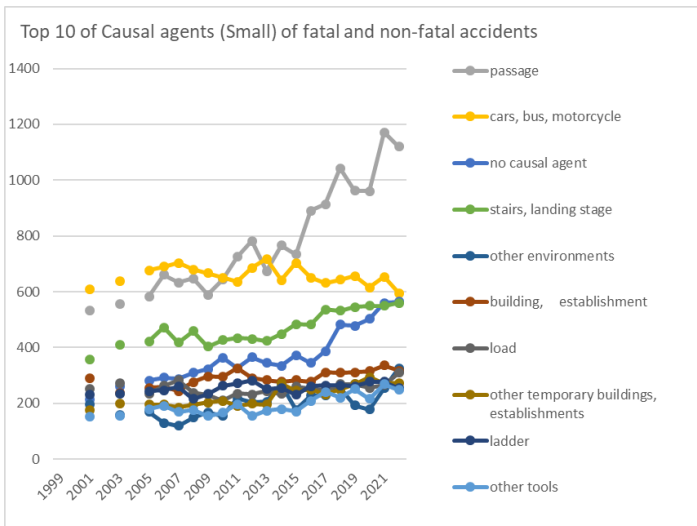
Transition of Top 7 of Type of fatal and non-fatal accidents in 17 others in Japan (1999-2022)



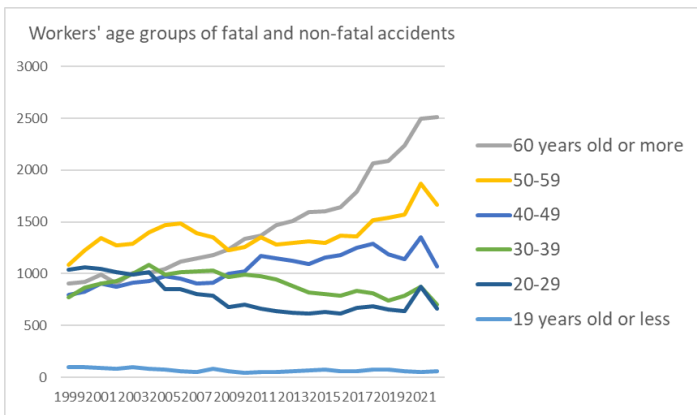
Transition of Top 5 of Causal agents (Large) of fatal and non-fatal accidents in 17 others in Japan (1999-2022)



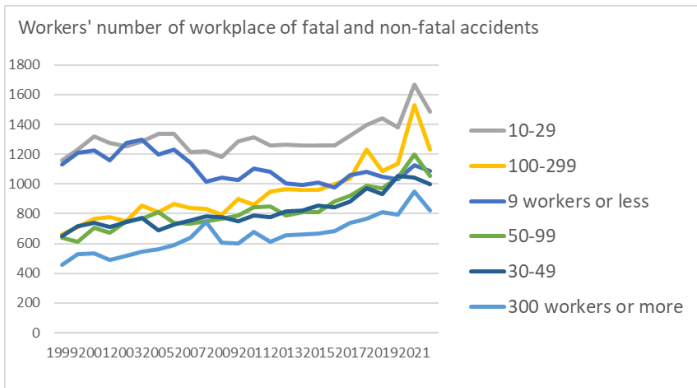
Transition of Top 7 of Causal agents (Middle) of fatal and non-fatal accidents in 17 others in Japan (1999-2022)



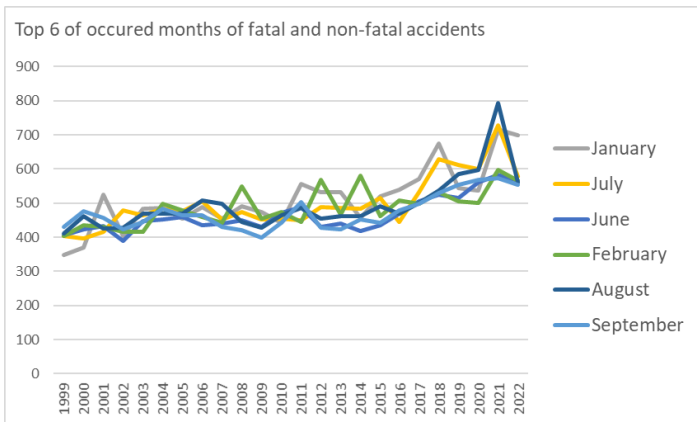
Transition of Top 10 of Causal agents (Small) of fatal and non-fatal accidents in 17 others in Japan (1999-2022)



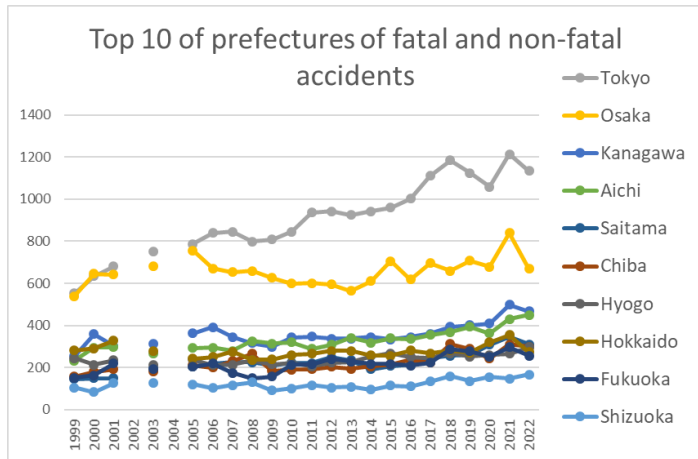
Transition of workers' age groups of fatal and non-fatal accidents in 17 others in Japan (1999-2022)



Transition of workers' number of workplace of fatal and non-fatal accidents in 17 others in Japan (1999-2022)



Transition of Top 6 of occurred months of fatal and non-fatal accidents in 17 others in Japan (1999-2022)



Transition of Top 10 of prefectures of fatal and non-fatal accidents in 17 others in Japan (1999-2022)

Transition of Type of fatal and non-fatal accidents in 17 others in Japan (1999-2022)

Type of accidents	1999	2000	2001	2002	2003	2004	2005	2006	2007	2008	2009	2010	2011	2012	2013	2014	2015	2016	2017	2018	2019	2020	2021	2022	total	Type of accidents
falling to same level	1,034	1,092	1,327	1,171	1,252	1,306	1,363	1,391	1,314	1,460	1,391	1,491	1,626	1,683	1,572	1,689	1,647	1,771	1,903	2,109	1,971	1,988	2,350	2,326	38,227	falling to same level
reaction to motion/improper motion	502	482	566	565	635	651	615	651	711	667	655	691	687	680	692	660	723	753	811	848	850	838	974	1,031	16,938	reaction to motion/improper motion
fall from height	807	864	923	863	916	1,022	920	987	895	900	936	895	919	931	915	946	982	949	987	1,030	1,078	1,114	1,020	1,017	22,816	fall from height
traffic accident (public road)	531	571	597	618	628	603	645	652	670	661	603	633	610	633	693	593	657	606	607	593	608	580	616	538	14,746	traffic accident (public road)
caught in/between	490	517	510	533	553	564	516	501	471	450	422	471	395	419	422	413	364	407	434	416	434	409	382	396	10,889	caught in/between
crash	214	253	239	243	235	270	278	242	264	251	234	248	283	272	261	278	267	282	332	333	302	365	313	332	6,591	crash
crashed by	220	236	212	217	205	219	214	216	221	190	205	204	219	207	194	231	232	187	195	228	272	221	227	252	5,224	crashed by
struck by flying or falling object	287	282	258	269	269	255	260	234	211	212	191	210	224	199	217	197	178	201	196	197	194	186	168	184	5,279	struck by flying or falling object

contact to high/low-temperature	77	69	94	68	71	93	93	83	74	75	59	99	88	72	113	79	98	82	93	199	141	169	120	173	2,382	contact to high/low-temperature
cut	274	318	267	282	259	260	241	236	246	236	208	213	187	188	156	175	185	158	157	181	179	148	171	159	5,084	cut
others	84	143	98	87	101	91	108	100	97	83	97	93	173	99	91	97	97	108	105	124	115	289	1,051	149	3,680	others
collapse	57	74	80	70	80	92	70	86	76	84	78	49	74	76	76	84	61	75	76	86	70	54	68	60	1,756	collapse
unclassifiable	52	39	48	54	39	47	26	29	34	28	33	18	13	25	32	24	22	20	25	21	27	15	14	19	704	unclassifiable
contact to harmful substance	11	22	19	18	16	14	17	27	12	9	13	14	16	14	16	9	15	13	19	19	21	26	20	16	396	contact to harmful substance
injury to the sole of the foot	14	12	14	10	13	10	9	13	5	11	14	7	7	4	10	13	10	9	7	14	7	9	10	6	238	injury to the sole of the foot
traffic accident (others)	14	7	8	4	8	7	15	9	11	7	7	5	9	12	6	5	9	9	7	4	6	14	7	6	196	traffic accident (others)
electric shock	14	8	12	5	10	15	9	7	6	12	6	7	4	6	9	4	3	4	6	15	6	7	3	6	184	electric shock
fire	5	1	3	1	1		3	4		3	3	1	5	2		1	2		1	1	1	1	1	3	43	fire
explosion		1	5	2	3	4	3	3	2	1	2	1	4	6	7	1	5	3	2	4	3		3	2	67	explosion
burst	2		2		3	1	1	3	2	5	2	1	4		3		2	1	2	2		3		2	41	burst
drown	4	10	2	3	2	5	2	8	2	2	10	2	42	3	6	6	3	7	4	15	5	3	2		148	drown
total	4,693	5,001	5,284	5,083	5,299	5,529	5,408	5,482	5,324	5,347	5,169	5,353	5,589	5,531	5,491	5,505	5,562	5,645	5,969	6,439	6,290	6,439	7,520	6,677	135,629	total

Transition of Causal agents (Large) of fatal and non-fatal accidents in 17 others in Japan (1999-2022)

Causal (L) agents	1999	2000	2001	2002	2003	2004	2005	2006	2007	2008	2009	2010	2011	2012	2013	2014	2015	2016	2017	2018	2019	2020	2021	2022	total	Causal (L) agents
temporary buildings, establishments	1,306	1,354	1,554	1,462	1,620	1,690	1,658	1,775	1,694	1,793	1,671	1,770	1,875	1,907	1,771	1,974	1,960	2,110	2,237	2,442	2,323	2,358	2,563	2,538	45,405	temporary buildings, establishments

other equipment	709	764	807	740	787	886	877	855	884	840	849	918	899	860	886	884	853	927	983	992	1,040	1,001	1,057	1,035	21,333	other equipment
crane, conveying machine	1,033	1,090	1,109	1,166	1,139	1,179	1,171	1,147	1,118	1,119	1,063	1,068	1,045	1,095	1,160	1,014	1,086	1,013	1,041	1,044	1,079	1,103	1,101	1,003	26,186	crane, conveying machine
others	496	528	495	495	499	535	526	530	523	528	534	549	557	523	527	508	586	510	590	676	684	849	1,664	758	14,670	others
environment	266	319	374	298	311	284	307	292	259	299	314	325	453	382	427	437	355	393	408	554	434	437	472	585	8,985	environment
load	244	251	290	260	315	301	279	285	308	265	254	246	258	282	276	258	285	280	273	295	301	279	276	335	6,696	load
machine	361	373	330	377	357	357	328	322	286	284	280	271	269	257	242	222	243	213	224	228	227	241	212	228	6,732	machine
substance, material	278	322	325	285	271	297	262	276	252	219	204	206	233	225	202	208	194	199	213	208	202	171	175	195	5,622	substance, material
total	4,693	5,001	5,284	5,083	5,299	5,529	5,408	5,482	5,324	5,347	5,169	5,353	5,589	5,531	5,491	5,505	5,562	5,645	5,969	6,439	6,290	6,439	7,520	6,677	135,629	total

Transition of Causal agents (Middle) of fatal and non-fatal accidents in 17 others in Japan (1999-2022)

Causal (M) agents	1999	2000	2001	2002	2003	2004	2005	2006	2007	2008	2009	2010	2011	2012	2013	2014	2015	2016	2017	2018	2019	2020	2021	2022	total	Causal (M) agents
temporary buildings, establishments	1,306	1,354	1,554	1,462	1,620	1,690	1,658	1,775	1,694	1,793	1,671	1,770	1,875	1,907	1,771	1,974	1,960	2,110	2,237	2,442	2,323	2,358	2,563	2,538	45,405	temporary buildings, establishments
vehicle	581	640	655	694	671	707	717	731	739	719	703	683	672	730	752	676	732	672	668	674	693	640	677	633	16,459	vehicle
natural environment	266	319	374	298	311	284	307	292	259	299	314	325	453	382	427	437	355	393	408	554	434	437	472	585	8,985	natural environment
no causal agent	230	200	214	295	260	299	282	292	288	310	323	363	326	365	344	334	373	344	387	482	478	503	559	564	8,415	no causal agent
tools	366	371	387	383	398	440	431	443	434	398	394	437	472	440	428	438	403	470	507	486	513	496	551	509	10,595	tools
conveying machine	393	391	401	416	401	413	380	365	340	351	314	345	328	330	358	309	313	297	336	333	347	423	391	336	8,611	conveying machine

load	244	251	290	260	315	301	279	285	308	265	254	246	258	282	276	258	285	280	273	295	301	279	276	335	6,696	load
human power machine, tools	194	250	261	238	245	247	267	251	278	265	269	288	240	260	246	264	254	263	288	314	318	298	298	308	6,404	human power machine, tools
other equipments, facilities	117	120	124	91	113	166	143	137	149	148	153	172	158	133	184	162	173	165	165	154	190	171	178	190	3,656	other equipments, facilities
materials	251	291	286	257	243	268	234	240	228	198	185	185	208	204	184	193	166	178	191	178	180	143	158	173	5,022	materials
other causal agent	194	276	225	142	190	176	212	198	203	173	182	158	208	133	154	146	188	145	182	164	179	328	1,092	172	5,420	other causal agent
general machine	167	167	143	166	148	153	134	134	124	111	118	110	124	114	106	98	101	84	91	90	107	105	88	84	2,867	general machine
construction machine	116	113	123	116	115	118	114	105	86	103	102	95	100	74	87	78	89	79	70	74	64	81	55	84	2,241	construction machine
crane	59	59	53	56	67	59	74	51	39	49	46	40	45	35	50	29	41	44	37	37	39	40	33	34	1,116	crane
metal manufacturing machine	19	22	12	23	39	23	29	25	28	25	12	22	13	14	18	13	11	15	17	23	22	11	24	27	487	metal manufacturing machine
unclassifiable	72	52	56	58	49	60	32	40	32	45	29	28	23	25	29	28	25	21	21	30	27	18	13	22	835	unclassifiable
hazards, harmful substances	27	31	39	28	28	29	28	36	24	21	19	21	25	21	18	15	28	21	22	30	22	28	17	22	600	hazards, harmful substances
woodworking machine	44	59	37	56	44	45	41	46	40	35	36	36	25	33	24	28	29	25	32	32	28	37	34	20	866	woodworking machine
electric equipment	20	13	16	16	15	22	18	13	13	21	22	17	16	14	20	15	17	21	17	26	12	28	25	17	434	electric equipment
power transmission mechanism	14	11	14	15	10	15	10	10	5	9	9	8	6	18	6	4	11	8	13	8	4	6	7	10	231	power transmission mechanism

standing tree			46		40		30	30	26	23	30	32	33	30	34	33	24	33	40	41	36	40	26	31	658	standing tree
conveyor			30		51		41	42	40	30	25	34	32	34	27	35	20	19	25	17	27	32	26	27	614	conveyor
lumber, bamboo			53		55		44	37	46	23	26	42	50	32	29	36	24	22	38	41	32	23	22	25	700	lumber, bamboo
machine/equipment as load			39		43		44	23	25	27	23	36	23	50	33	24	25	27	27	27	32	24	10	25	587	machine/equipment as load
unclassifiable			56		49		32	40	32	45	29	28	23	25	29	28	25	21	21	30	27	18	13	22	593	unclassifiable
scaffolding			20		14		15	13	19	9	18	5	12	10	13	17	13	10	15	17	10	12	18	22	282	scaffolding
stone, sand, substance			26		13		27	18	23	13	14	10	21	16	25	13	19	20	18	16	11	18	17	17	355	stone, sand, substance
other powered conveying machines			21		24		25	27	17	15	11	15	23	19	23	23	12	10	11	15	22	18	21	14	366	other powered conveying machines
mobile crane			27		30		30	13	10	18	18	19	21	12	20	11	18	16	20	19	16	21	11	14	364	mobile crane
chain saw			9		9		9	7	8	11	13	9	6	12	8	8	9	12	12	13	12	12	12	13	204	chain saw
roof, beam, haze, crossbeam, principal rafter			22		14		12	21	26	19	10	18	20	22	25	19	17	11	9	24	16	16	20	11	352	roof, beam, haze, crossbeam, principal rafter
other hazards, harmful substances			16		13		17	11	14	12	8	9	10	9	8	9	10	12	11	12	12	13	11	11	228	other hazards, harmful substances
hardening machine			6		7		9	8	5	8	6	8	7	3	6	6	5	7	8	2	5	2	5	11	124	hardening machine
power transmission mechanism			14		10		10	10	5	9	9	8	6	18	6	4	11	8	13	8	4	6	7	10	176	power transmission mechanism
leveling, transporting or loading machine			15		19		22	16	11	19	11	14	17	16	11	9	14	8	13	10	6	14	7	9	261	leveling, transporting or loading machine
elevator, lift			10		16		13	16	11	13	15	9	9	11	12	11	12	14	9	7	10	9	14	9	230	elevator, lift
other metal manufacturing			5		19		11	14	9	11	8	12	3	4	11	3	4	4	6	4	7	6	6	9	156	other metal manufacturing

other kiln, caldron					1			1	1		1		2		1		1							8	other kiln, caldron		
injection molding machine					1		1						1	1			1								5	injection molding machine	
cargo lifting appliance							1				1	1	1			1									5	cargo lifting appliance	
chamfering machine, router, woodworking milling machine								1			1		1		1										4	chamfering machine, router, woodworking milling machine	
straddle carrier																2									2	straddle carrier	
radiation																		2							2	radiation	
other mobile silviculture machine																						1			1	other mobile silviculture machine	
derrick crane									1																1	derrick crane	
lumberyard equipment, logging cableway																						1			1	lumberyard equipment, logging cableway	
skyline yarding machine																											skyline yarding machine
simple skyline yarding equipment																											simple skyline yarding equipment
total	4,693	5,001	5,284	5,083	5,299	5,529	5,408	5,482	5,324	5,347	5,169	5,353	5,589	5,531	5,491	5,505	5,562	5,645	5,969	6,439	6,290	6,439	7,520	6,677	135,629	total	

Transition of workers' age groups of fatal and non-fatal accidents in 17 others in Japan (1999-2022)

Age	1999	2000	2001	2002	2003	2004	2005	2006	2007	2008	2009	2010	2011	2012	2013	2014	2015	2016	2017	2018	2019	2020	2021	2022	total	Age
60 years old or more	903	923	991	902	1,007	1,005	1,048	1,119	1,145	1,178	1,238	1,337	1,371	1,467	1,510	1,598	1,600	1,642	1,795	2,066	2,092	2,239	2,501	2,510	35,187	60 years old or more

50-59	1,082	1,227	1,344	1,277	1,288	1,401	1,467	1,485	1,393	1,356	1,226	1,256	1,352	1,284	1,296	1,312	1,300	1,366	1,359	1,521	1,540	1,571	1,870	1,666	33,239	50-59
40-49	795	824	907	872	913	932	976	951	907	915	1,000	1,023	1,172	1,151	1,126	1,096	1,155	1,182	1,248	1,288	1,188	1,138	1,352	1,073	25,184	40-49
30-39	776	865	905	932	1,003	1,088	994	1,013	1,020	1,032	972	988	979	943	880	816	804	784	832	809	741	791	876	702	21,545	30-39
20-29	1,037	1,063	1,048	1,018	992	1,019	848	853	807	784	675	703	665	639	624	619	631	614	673	684	657	638	873	664	18,828	20-29
19 years old or less	100	99	89	82	96	84	75	61	52	82	58	46	50	47	55	64	72	57	62	71	72	62	48	62	1,646	19 years old or less
total	4,693	5,001	5,284	5,083	5,299	5,529	5,408	5,482	5,324	5,347	5,169	5,353	5,589	5,531	5,491	5,505	5,562	5,645	5,969	6,439	6,290	6,439	7,520	6,677	135,629	total

Transition of workers' number of workplace of fatal and non-fatal accidents in 17 others in Japan (1999-2022)

Workers scale	1999	2000	2001	2002	2003	2004	2005	2006	2007	2008	2009	2010	2011	2012	2013	2014	2015	2016	2017	2018	2019	2020	2021	2022	total	Workers scale
10-29	1,158	1,230	1,318	1,275	1,256	1,289	1,335	1,335	1,212	1,222	1,181	1,284	1,316	1,259	1,265	1,259	1,260	1,259	1,326	1,395	1,442	1,382	1,669	1,487	31,414	10-29
100-299	660	709	767	776	751	853	808	865	840	834	795	899	859	948	967	962	962	998	1,035	1,233	1,089	1,136	1,532	1,231	22,509	100-299
9 workers or less	1,133	1,210	1,227	1,159	1,278	1,300	1,200	1,229	1,141	1,015	1,045	1,029	1,103	1,083	1,004	991	1,011	979	1,060	1,083	1,048	1,030	1,128	1,087	26,573	9 workers or less
50-99	637	609	703	673	751	768	813	737	735	750	768	791	842	849	788	810	808	880	924	990	969	1,041	1,199	1,053	19,888	50-99
30-49	649	714	737	713	746	773	690	728	756	783	775	747	789	778	814	823	855	843	883	970	931	1,054	1,043	996	19,590	30-49
300 workers or more	456	529	532	487	517	546	562	588	640	743	605	603	680	614	653	660	666	686	741	768	811	796	949	823	15,655	300 workers or more
total	4,693	5,001	5,284	5,083	5,299	5,529	5,408	5,482	5,324	5,347	5,169	5,353	5,589	5,531	5,491	5,505	5,562	5,645	5,969	6,439	6,290	6,439	7,520	6,677	135,629	total

Transition of occurred months of fatal and non-fatal accidents in 17 others in Japan (1999-2022)

Month	1999	2000	2001	2002	2003	2004	2005	2006	2007	2008	2009	2010	2011	2012	2013	2014	2015	2016	2017	2018	2019	2020	2021	2022	total	Month
January	349	371	525	404	484	485	455	489	455	490	474	443	556	533	531	456	519	539	570	675	543	538	716	699	12,299	January
July	403	397	416	478	464	483	477	506	452	473	451	455	449	489	485	484	515	445	532	628	611	600	727	579	11,999	July
June	406	422	432	389	448	452	459	436	439	449	431	471	489	431	440	418	436	469	506	524	515	562	582	566	11,172	June
February	403	436	431	416	417	497	479	460	442	550	454	474	445	569	467	581	462	509	498	532	506	500	597	565	11,690	February
August	412	463	426	428	468	469	468	508	498	445	427	464	487	455	462	463	491	468	500	538	586	597	792	560	11,875	August
September	430	477	458	423	446	483	465	465	430	420	398	443	502	428	424	453	442	479	498	530	553	568	573	553	11,341	September

December	370	401	412	415	443	403	473	402	421	392	408	431	443	427	446	453	415	434	495	466	465	576	570	553	10,714	December
March	377	422	461	429	439	496	460	512	438	426	446	458	553	470	461	475	458	466	494	499	467	489	565	532	11,293	March
November	406	404	454	412	408	462	407	442	460	415	407	429	444	434	420	435	474	469	483	511	531	555	515	531	10,908	November
October	412	427	469	468	473	487	449	475	457	428	486	472	452	477	511	462	482	462	540	566	508	564	574	527	11,628	October
May	370	414	405	403	399	403	405	400	446	445	371	407	401	403	434	426	434	455	434	518	478	423	729	509	10,512	May
April	355	367	395	418	410	409	411	387	386	414	416	406	368	415	410	399	434	450	419	452	527	467	580	503	10,198	April
total	4,693	5,001	5,284	5,083	5,299	5,529	5,408	5,482	5,324	5,347	5,169	5,353	5,589	5,531	5,491	5,505	5,562	5,645	5,969	6,439	6,290	6,439	7,520	6,677	135,629	total

Transition of prefectures of fatal and non-fatal accidents in 17 others in Japan (1999-2022)

Prefecture	1999	2000	2001	2002	2003	2004	2005	2006	2007	2008	2009	2010	2011	2012	2013	2014	2015	2016	2017	2018	2019	2020	2021	2022	total	Prefecture
Tokyo	552	634	681		752		788	840	846	799	809	846	937	942	925	943	960	1,003	1,110	1,185	1,124	1,058	1,213	1,134	20,081	Tokyo
Osaka	539	645	641		683		757	670	654	660	626	599	602	595	564	610	706	618	696	659	707	678	839	669	14,417	Osaka
Kanagawa	255	359	302		314		362	391	346	316	299	343	348	338	337	346	333	346	360	393	401	410	499	467	7,865	Kanagawa
Aichi	232	295	297		266		293	295	279	325	314	320	289	308	342	318	340	336	354	369	393	362	430	449	7,206	Aichi
Saitama	145	150	149		197		206	217	225	226	209	223	222	249	235	193	208	215	246	257	262	308	347	310	4,999	Saitama
Chiba	157	181	192		180		211	200	230	266	185	191	192	204	194	205	215	237	223	313	289	242	310	298	4,915	Chiba
Hyogo	244	214	235		214		239	212	214	234	216	222	205	224	227	254	268	251	246	268	252	259	265	296	5,259	Hyogo
Hokkaido	281	291	328		277		243	251	276	236	238	260	266	279	280	258	257	281	267	281	272	320	355	273	6,070	Hokkaido
Fukuoka	152	164	219		193		204	219	174	150	158	213	216	240	229	217	218	209	224	288	278	252	296	256	4,769	Fukuoka
Shizuoka	104	84	127		126		120	102	117	130	92	101	116	105	108	95	114	111	134	160	136	156	148	167	2,653	Shizuoka
Hiroshima	148	154	179		95		139	116	106	133	114	114	122	117	112	138	111	126	130	123	117	157	199	135	2,885	Hiroshima
Kyoto	78	95	115		107		83	110	88	105	116	119	122	93	109	100	114	105	111	105	102	101	133	122	2,333	Kyoto
Ibaraki	74	58	90		82		64	76	91	101	73	112	86	95	82	107	106	100	92	117	108	124	125	119	2,082	Ibaraki
Miyagi	90	80	86		84		68	80	85	75	87	85	150	113	114	103	103	89	104	121	100	141	189	108	2,255	Miyagi
Okinawa	72	65	69		77		54	69	65	98	86	67	79	73	65	82	79	90	78	92	89	98	111	103	1,761	Okinawa
Gunma	113	93	70		94		71	78	77	63	53	44	50	53	68	72	51	65	80	64	65	58	82	95	1,559	Gunma

Tochigi	64	48	64		54		65	57	46	54	57	60	54	45	79	56	59	48	60	74	65	72	78	90	1,349	Tochigi
Nagasaki	39	42	53		57		47	55	56	58	76	58	66	69	72	61	56	59	56	52	53	76	95	85	1,341	Nagasaki
Kumamoto	69	58	65		82		63	71	81	59	73	64	86	79	93	75	77	101	100	88	92	118	114	84	1,792	Kumamoto
Mie	61	55	61		85		59	62	62	70	64	91	60	78	67	56	64	60	70	73	76	79	76	83	1,512	Mie
Fukushima	58	53	53		73		49	73	49	70	59	58	61	80	64	56	62	80	77	73	74	76	106	80	1,484	Fukushima
Niigata	46	82	80		79		81	61	81	66	73	76	88	82	81	76	59	85	69	74	79	72	111	75	1,676	Niigata
Gifu	70	51	67		76		61	62	73	60	40	55	57	53	52	70	65	63	71	76	67	86	92	74	1,441	Gifu
Okayama	53	62	55		51		82	73	45	60	72	58	75	60	64	48	67	58	67	80	77	70	105	67	1,449	Okayama
Shiga	38	32	32		28		46	60	67	46	51	52	51	47	39	45	50	33	50	46	60	51	77	64	1,065	Shiga
Kagoshima	49	69	73		77		57	82	77	70	62	74	59	47	46	35	48	58	60	55	58	81	72	61	1,370	Kagoshima
Nagano	65	85	83		79		82	76	68	61	80	75	79	81	71	95	85	88	65	96	97	61	70	60	1,702	Nagano
Nara	25	37	41		27		51	48	38	48	61	38	41	49	42	39	52	60	60	82	59	59	59	60	1,076	Nara
Iwate	50	41	47		34		43	60	18	34	37	31	83	42	59	60	31	47	43	54	50	34	61	60	1,019	Iwate
Miyazaki	71	75	55		66		59	65	64	62	71	75	76	64	57	72	59	61	43	50	48	59	70	59	1,381	Miyazaki
Ishikawa	32	34	23		41		31	32	28	28	40	37	51	46	35	42	38	41	44	48	55	66	63	56	911	Ishikawa
Ehime	66	70	65		78		67	45	52	58	44	65	46	54	48	39	31	41	37	52	63	43	56	50	1,170	Ehime
Yamagata	45	36	21		33		45	35	36	34	42	37	50	43	46	40	39	31	40	39	35	55	60	49	891	Yamagata
Aomori	71	61	62		75		58	60	50	54	58	53	62	57	56	60	42	50	49	56	50	60	74	48	1,266	Aomori
Yamaguchi	33	38	51		35		39	48	57	37	35	61	47	43	39	47	34	30	44	50	42	45	55	46	956	Yamaguchi
Toyama	38	51	48		33		36	40	32	30	39	32	48	36	39	34	34	33	41	41	28	39	43	46	841	Toyama
Oita	47	44	53		43		44	30	36	30	38	30	31	31	25	34	38	21	34	38	32	36	33	45	793	Oita
Kagawa	43	29	38		36		39	56	46	37	52	39	37	41	42	55	60	49	54	58	56	81	45	43	1,036	Kagawa
Tokushima	33	34	41		33		26	29	24	30	24	23	10	35	36	30	28	25	30	32	25	33	40	43	664	Tokushima
Saga	40	24	32		29		39	39	35	53	40	40	37	43	34	35	31	45	38	33	32	45	39	38	821	Saga
Akita	48	36	46		44		29	40	41	28	24	43	29	40	28	30	21	23	27	37	41	40	55	37	787	Akita

Yamanashi	17	22	30		33		36	38	36	41	34	41	32	18	25	23	21	21	26	27	29	26	41	36	653	Yamanashi
Wakayama	47	25	35		38		40	43	53	54	39	31	46	34	52	31	41	39	40	51	37	48	35	35	894	Wakayama
Fukui	32	26	32		31		21	20	20	25	22	23	25	23	27	32	24	35	29	34	32	33	49	30	625	Fukui
Kochi	54	76	52		52		66	39	34	34	48	38	56	50	45	50	39	45	50	39	40	26	48	26	1,007	Kochi
Tottori	17	16	14		18		8	18	15	15	11	11	12	7	18	11	8	10	14	9	15	16	19	24	306	Tottori
Shimane	36	27	32		38		37	39	31	24	28	25	32	26	19	27	16	23	26	27	28	29	38	22	630	Shimane
total	4,693	5,001	5,284	5,083	5,299	5,529	5,408	5,482	5,324	5,347	5,169	5,353	5,589	5,531	5,491	5,505	5,562	5,645	5,969	6,439	6,290	6,439	7,520	6,677	135,629	total

Data Source : <https://anzeninfo.mhlw.go.jp/user/anzen/tok/anst00.html> MHLW, Jaan

Return to https://www.jisha.or.jp/english/statistics/202312_05.html