

OCCUPATIONAL SAFETY AND HEALTH IN MALAYSIA

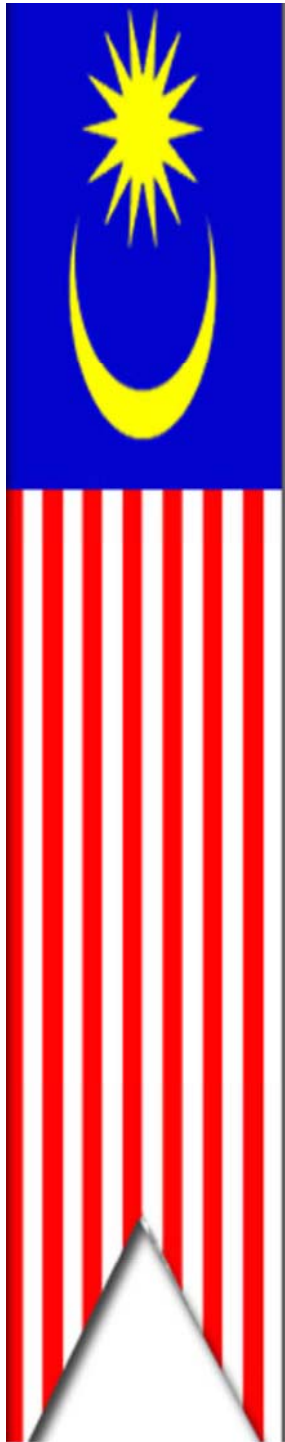
NOR MAIZURA BINTI YUSOFF

**(Factory & Machinery Inspector/
Deputy Director)**

Dept. of Occupational Safety and Health

Ministry of Human Resources

MALAYSIA



SCOPE

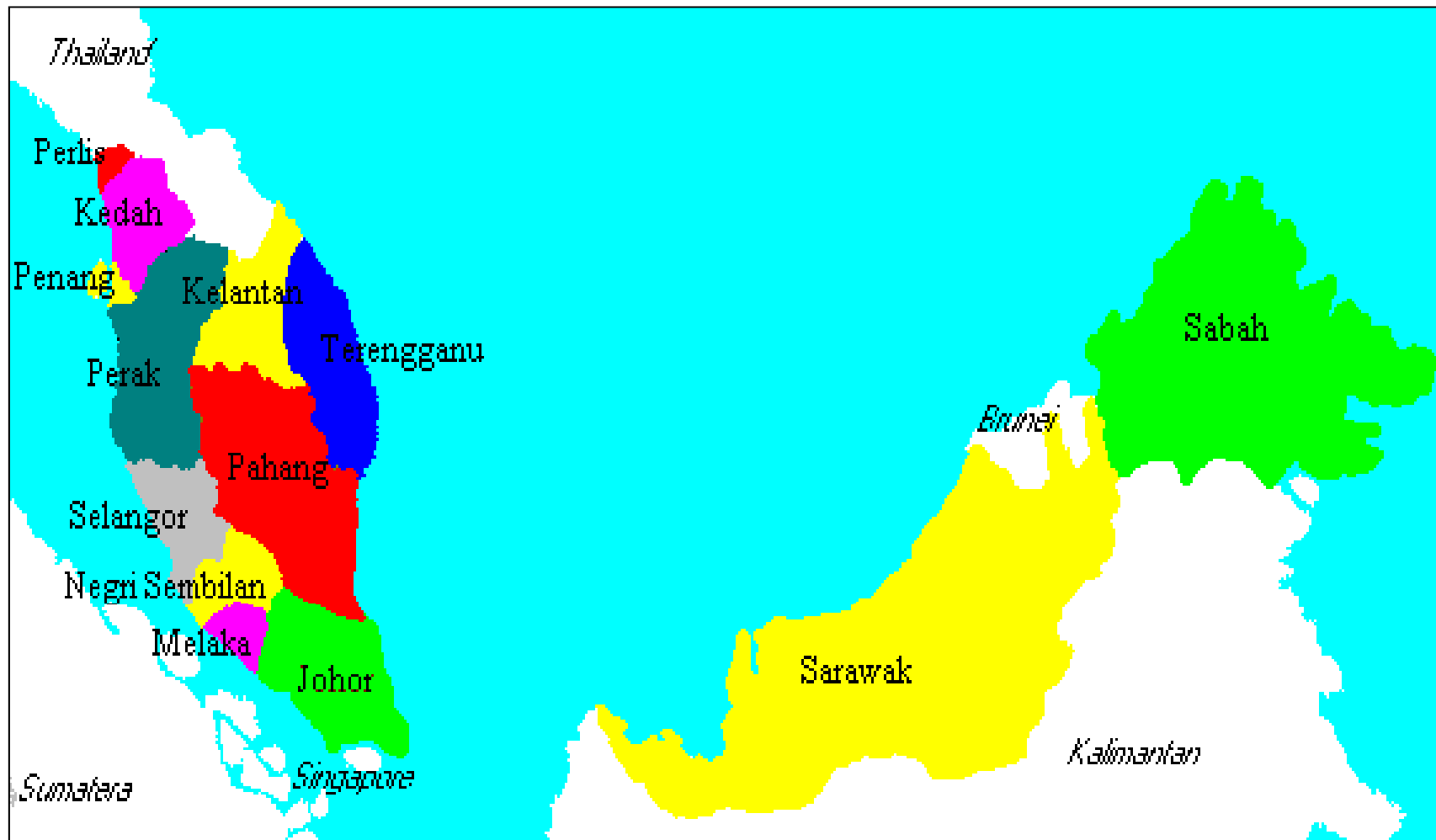
- **Introduction**
- **Occupational Safety and Health in Malaysia**
 - Department of Occupational Safety and Health
 - Laws enforced by DOSH
 - Key Activities
 - Perspective of OSH in Malaysia
 - OSH related laws and regulations
 - Safety of equipments and facilities
 - Promotional activities
 - Problem in OSH
 - Countermeasures

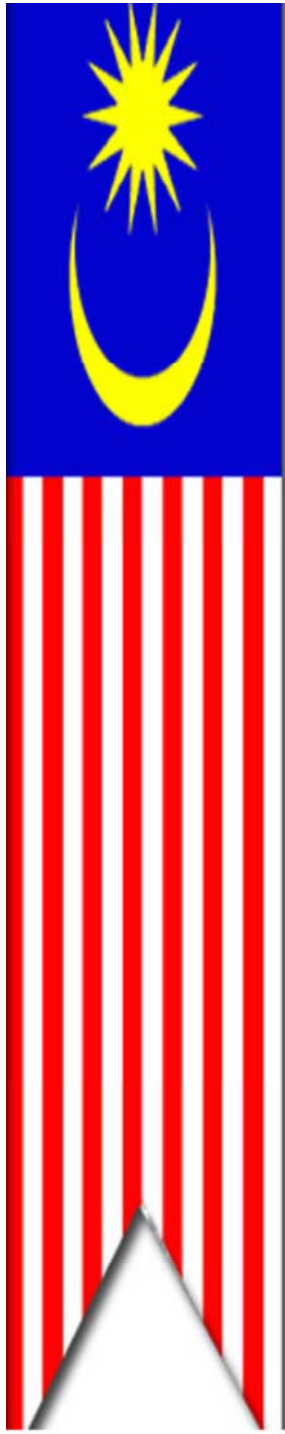


Location of Malaysia

Southeast Asia Map





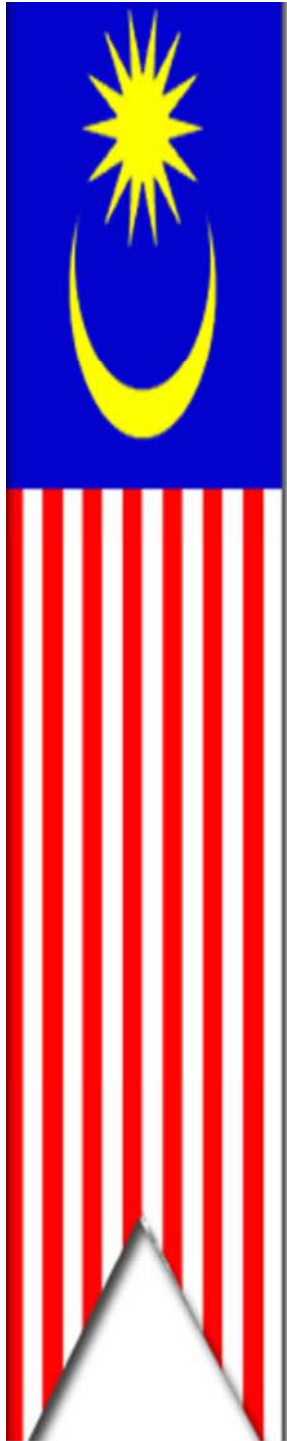


MALAYSIA

GENERAL STATISTIC

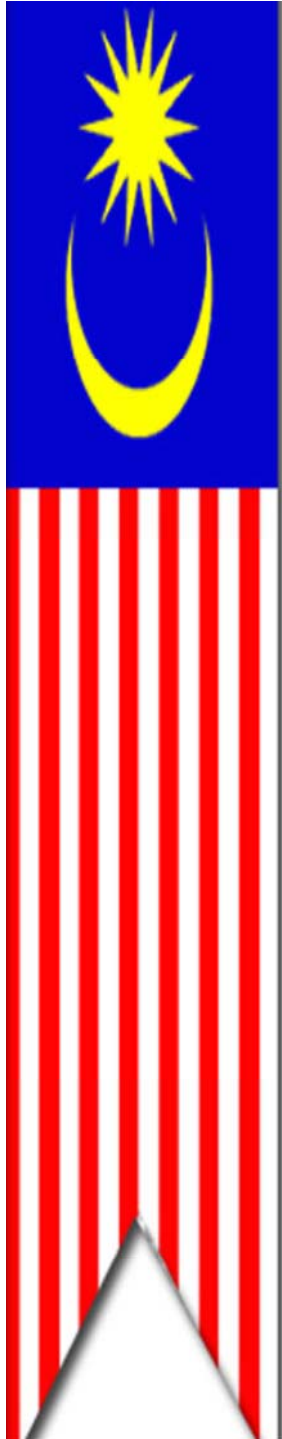
Total Population	30.1 million
Labour Force	13.6 million
Employment	13.1 million
Gross Domestic Product (GDP)	RM 1,056.7 billion
GDP Growth Rate	5.0-5.5%
Per capital Income	USD 10,898
Inflation rate	2.0-3.0%

Department of Statistic Malaysia (DSM), data 2014



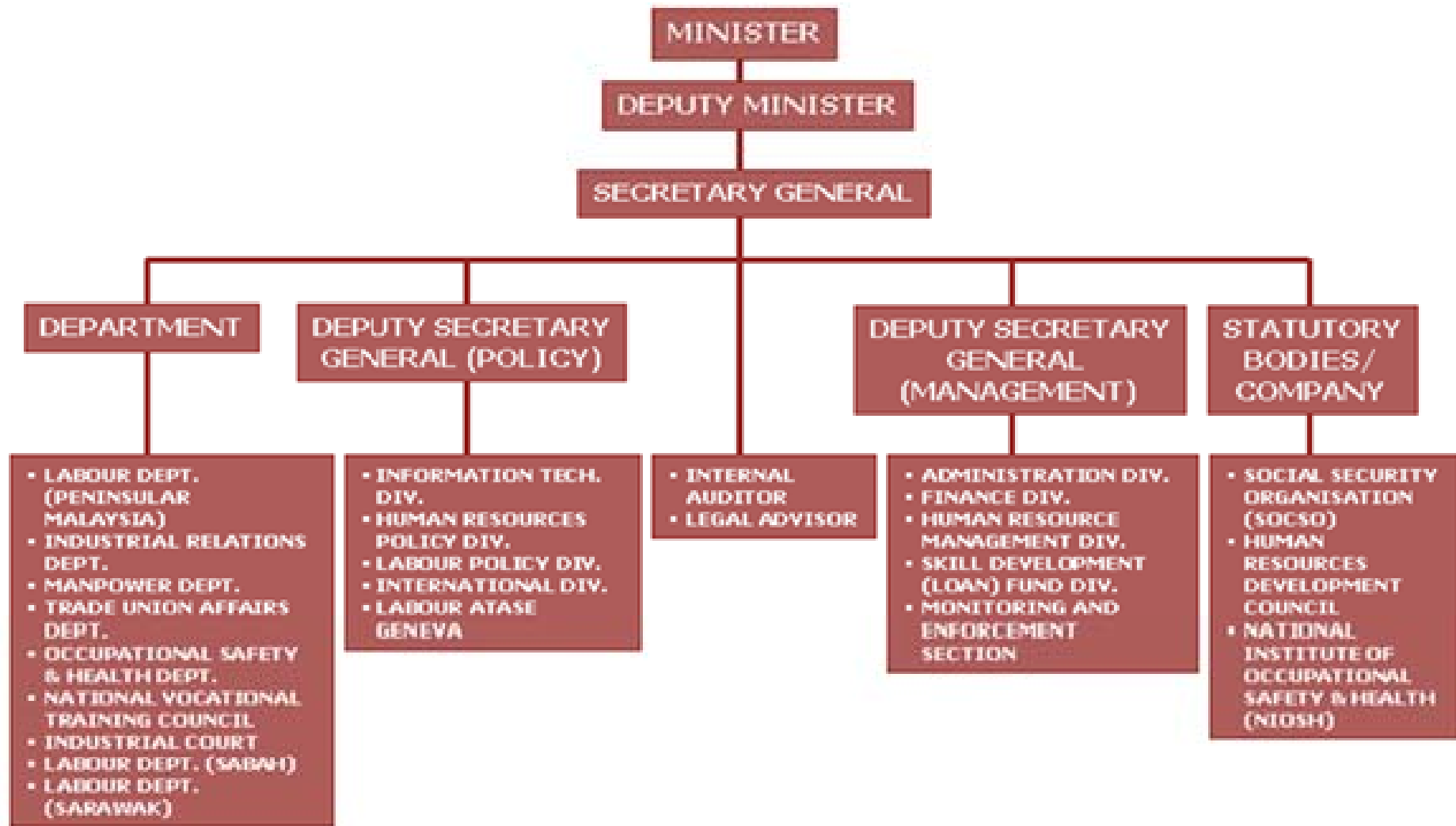
Introduction (Geographical)

- Located at South East Asia
- Consists of Peninsular Malaysia (West) & Sarawak and Sabah(East)
- Area covered is 329,758 sq.km (60% occupied by Sabah & Sarawak)
- Climate : Tropical climate with warm weather all year round and abundant rain
 - (T' : 21 – 32 'C);
- Political System : Parliamentary Democracy .
- Head of States : Supreme Ruler (King)
- Head of Government : Prime Minister

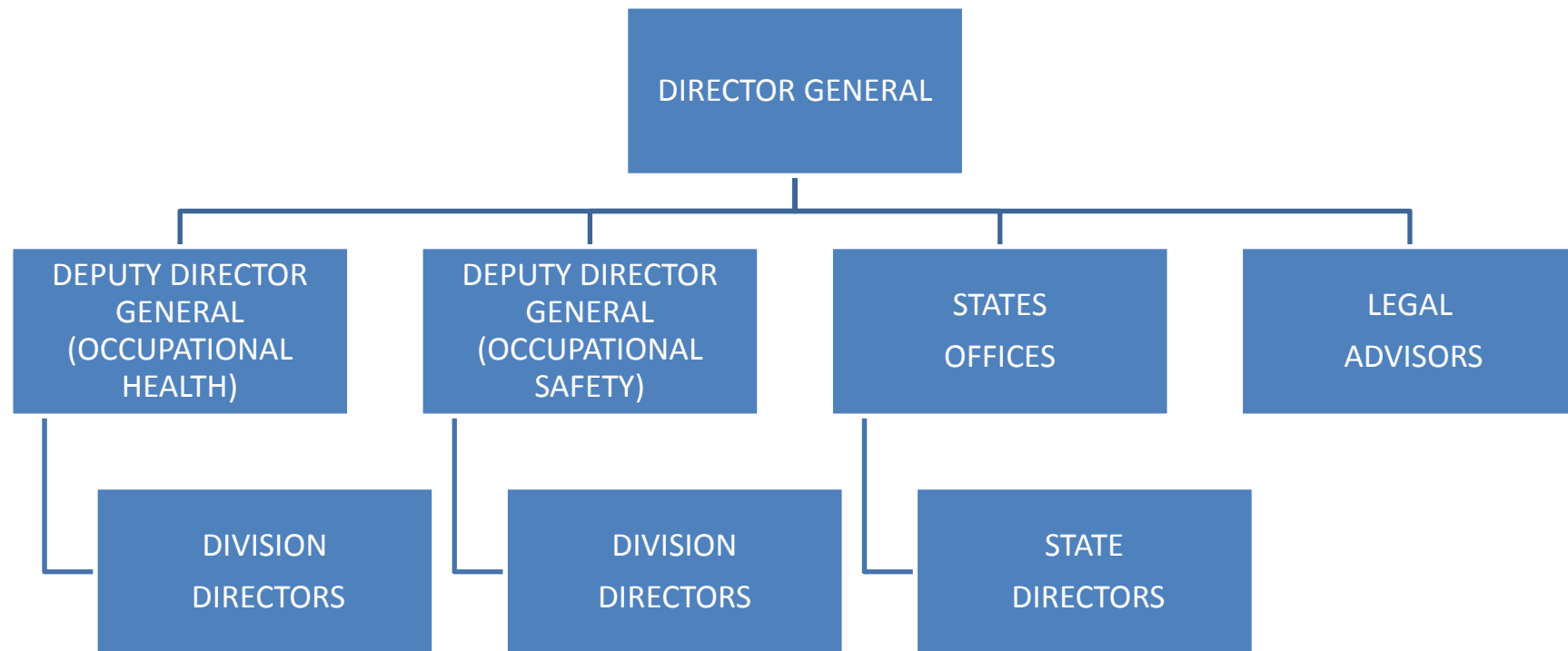


OCCUPATIONAL SAFETY AND HEALTH IN MALAYSIA

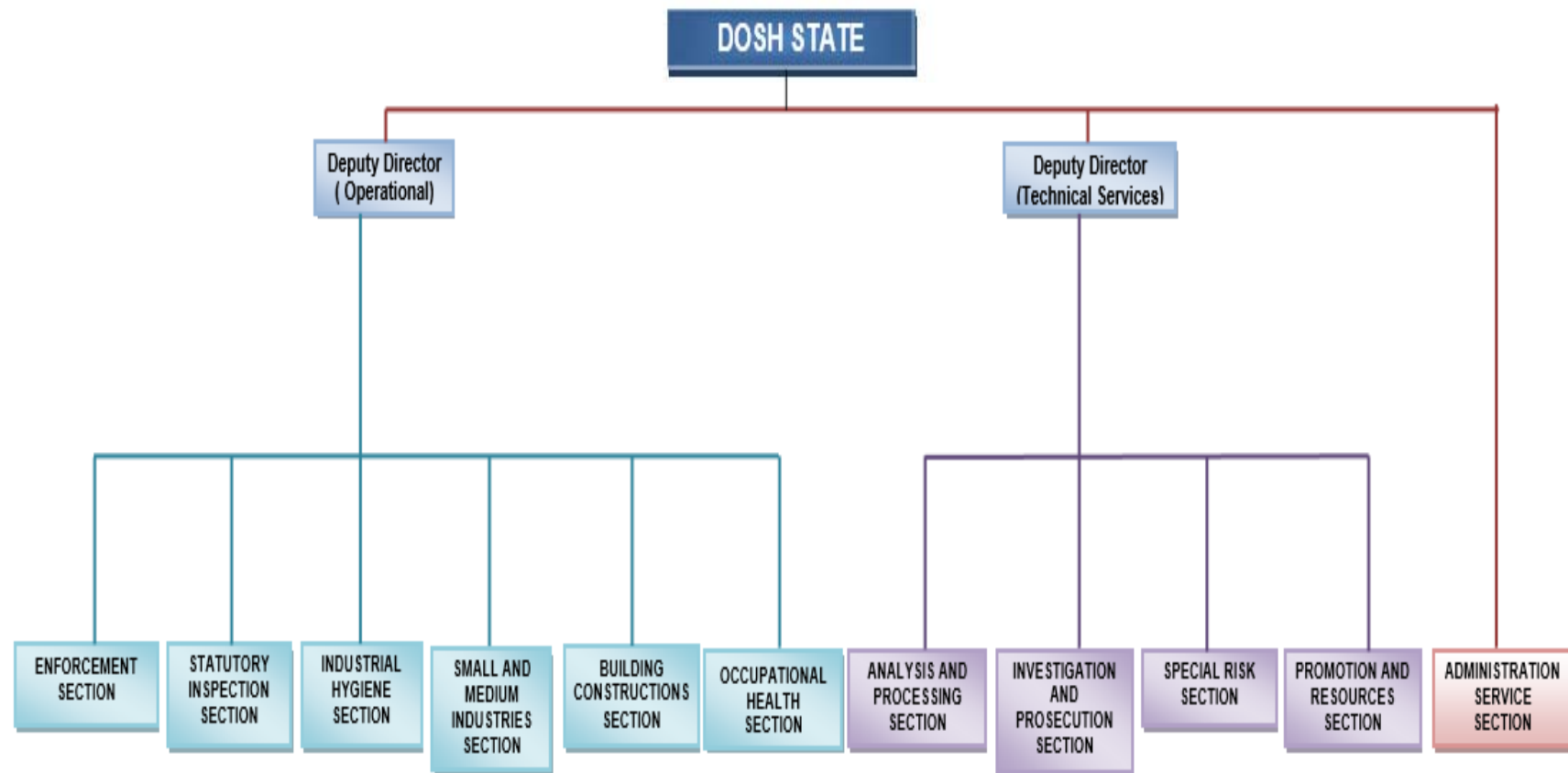
MINISTRY OF HUMAN RESOURCES

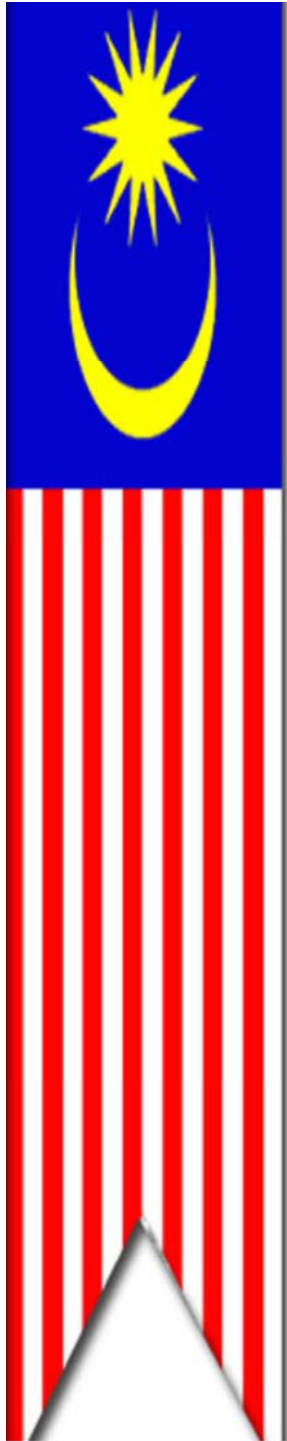


ORGANISATION CHART DOSH MALAYSIA



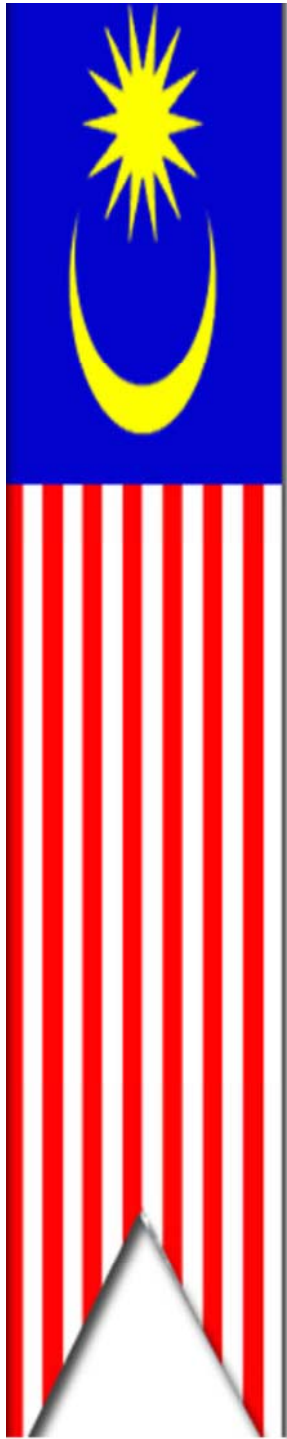
ORGANIZATION CHART DEPARTMENT OF OCCUPATIONAL SAFETY AND HEALTH STATE OFFICES





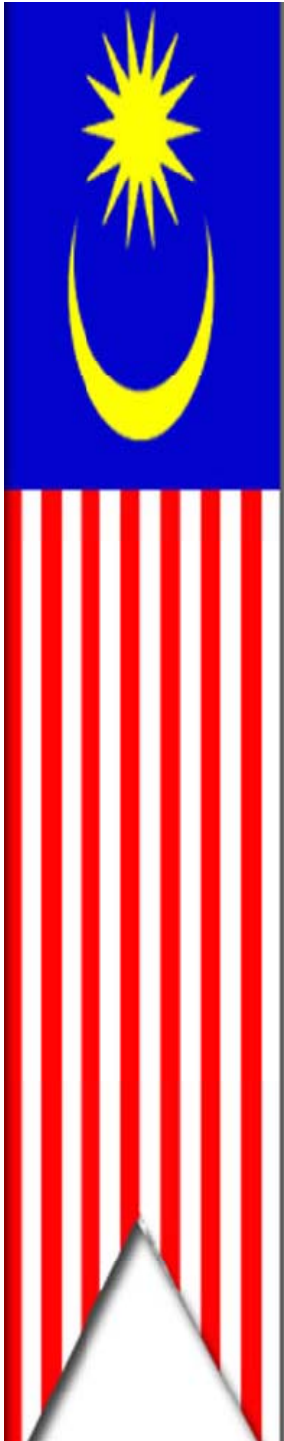
Laws Enforced By *DOSH*

- FACTORIES & MACHINERY ACT 1967
(FMA 1967)
- OCCUPATIONAL SAFETY AND HEALTH
ACT 1994
(OSHA 1994)
- PETROLEUM (SAFETY MEASURES)
ACT 1984



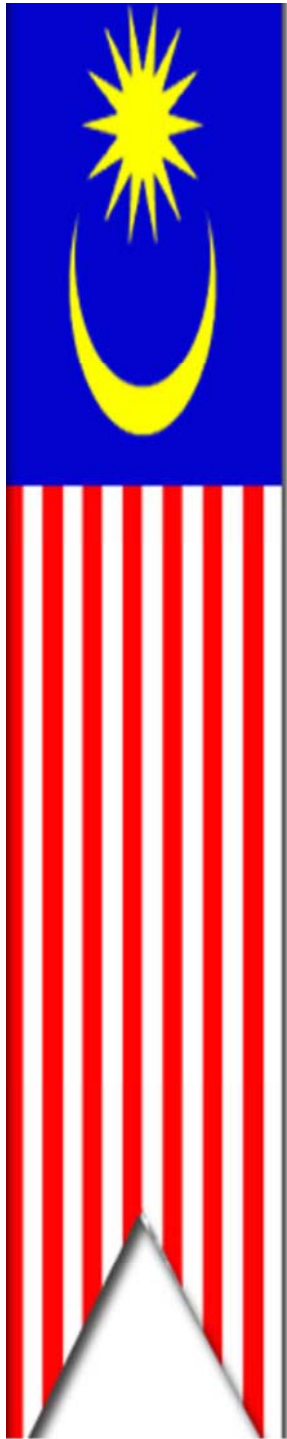
Factories And Machinery Act 1967 (FMA)

An **Act** to provide for the **control of factories** with respect to matters relating to the **safety, health and welfare** or **persons** therein, the **registration** and **inspection of machinery** and for **matters connected therewith.**

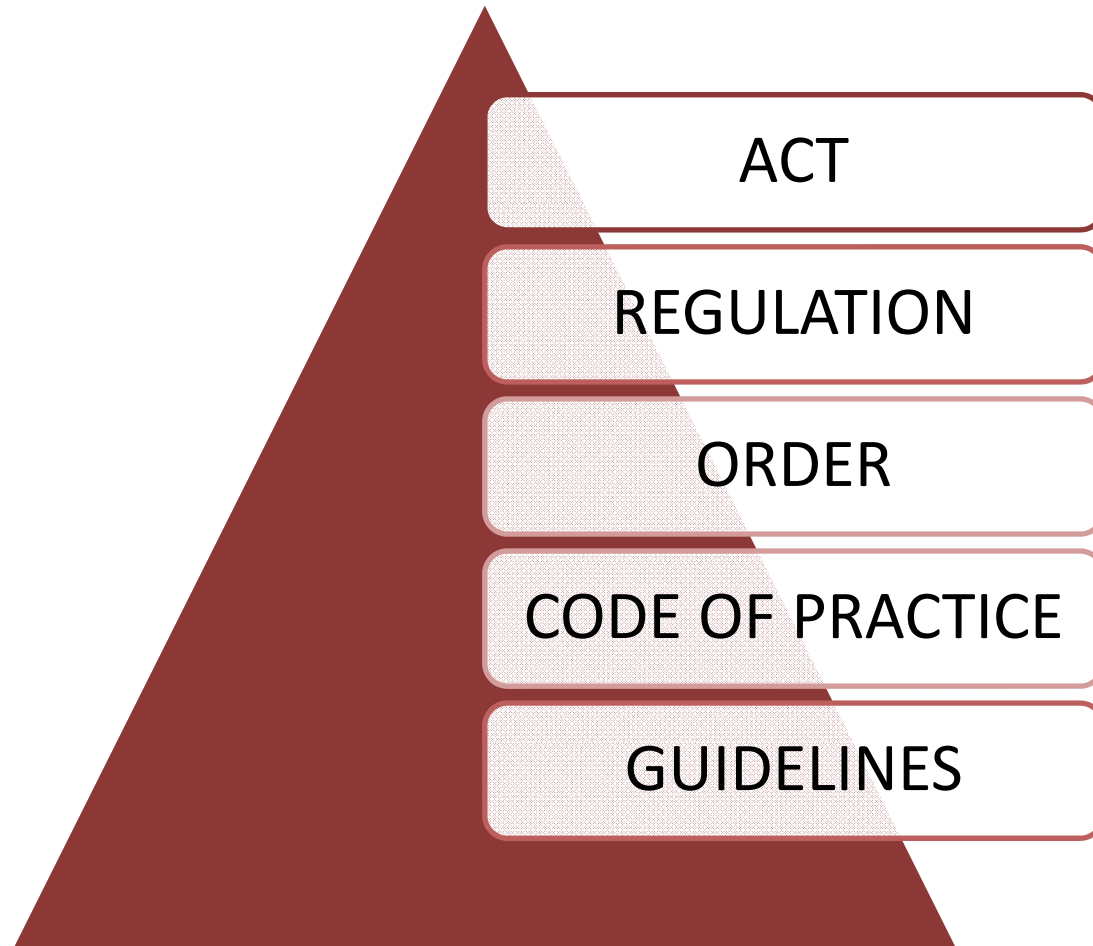


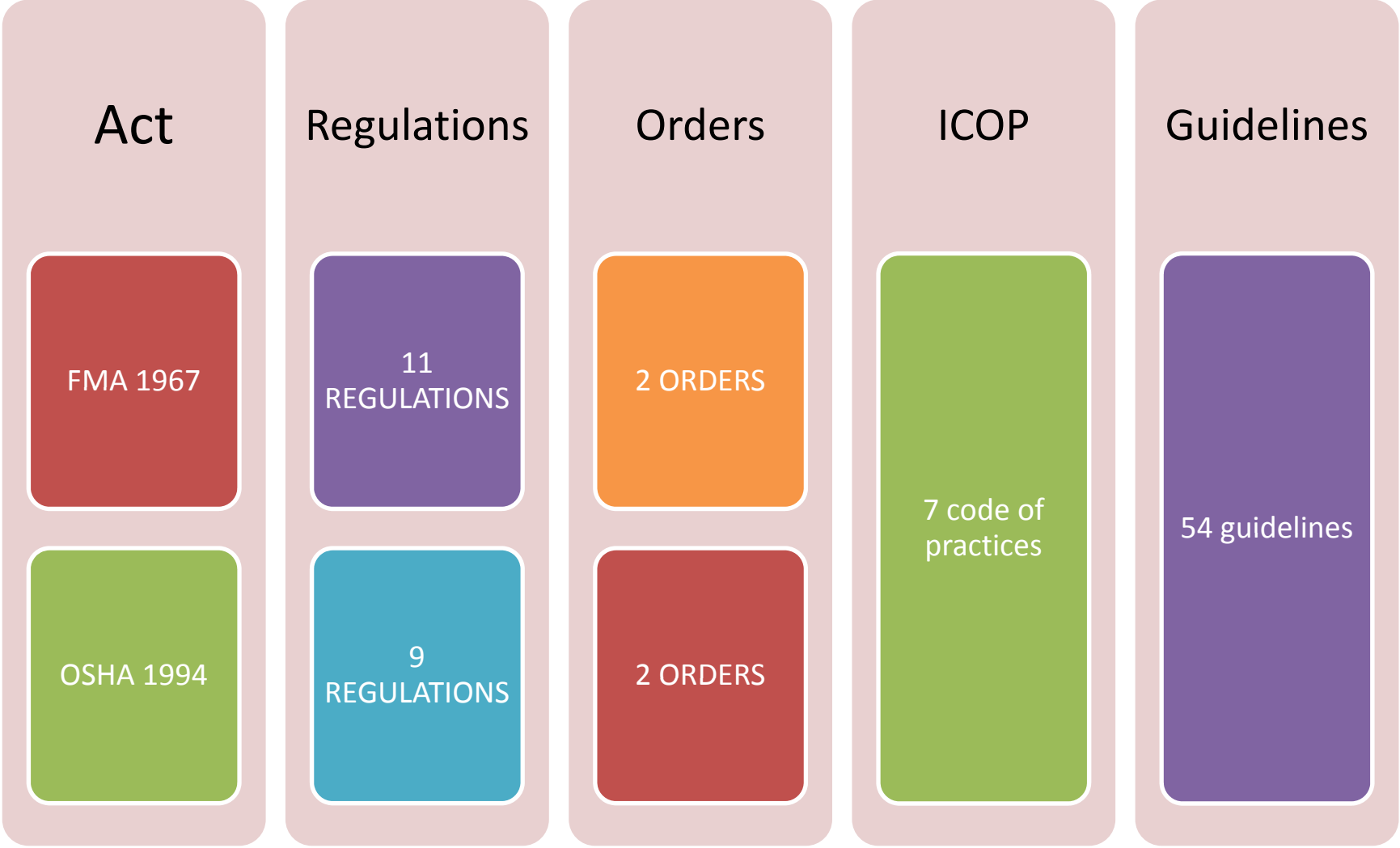
Occupational Safety & Health Act 1994 (OSHA)

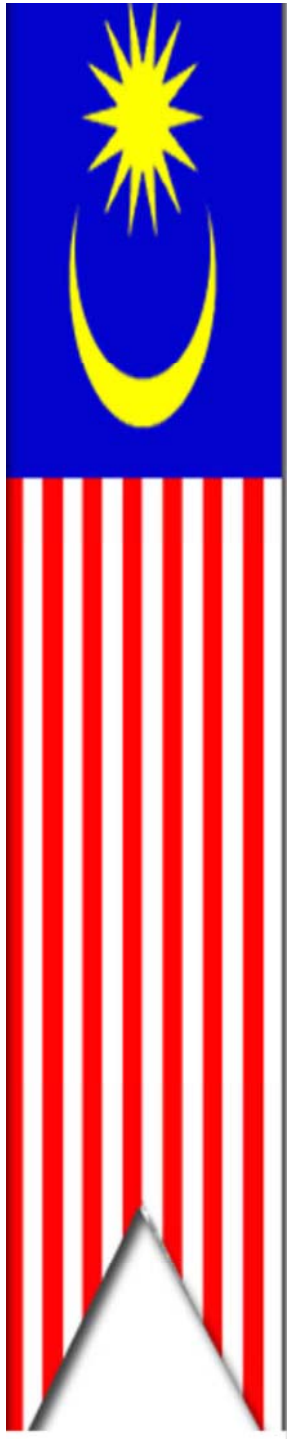
- Gazette in February 1994
- Cover nearly **all sectors except** person working on **board ships** and the **armed forces**
- Wide coverage-nearly **90%** of workforce



HIRACHCY OF LEGISLATION







DOSH - KEY ACTIVITIES

1. STANDARD SETTING

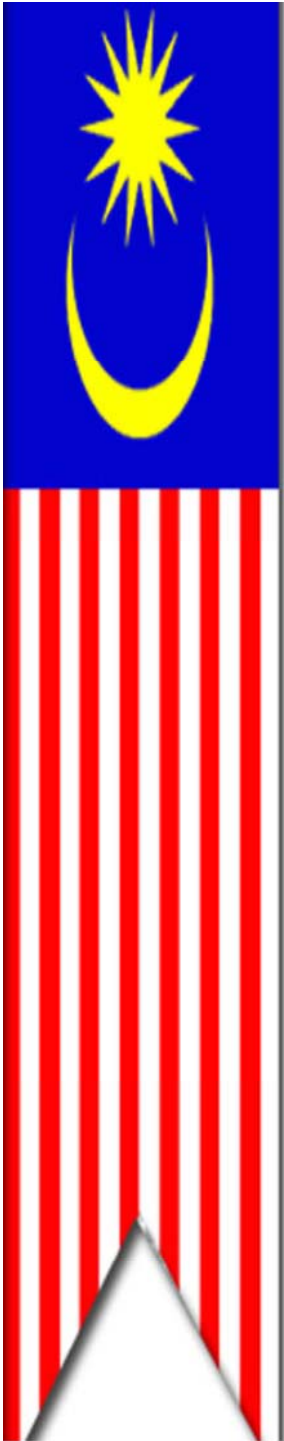
- POLICY STUDY
- DRAFTING LEGISLATIONS

2. ENFORCEMENT

- APPROVAL & AUTHORISATION
- REGISTRATION
- CERTIFICATION
- INSPECTION
- LITIGATION

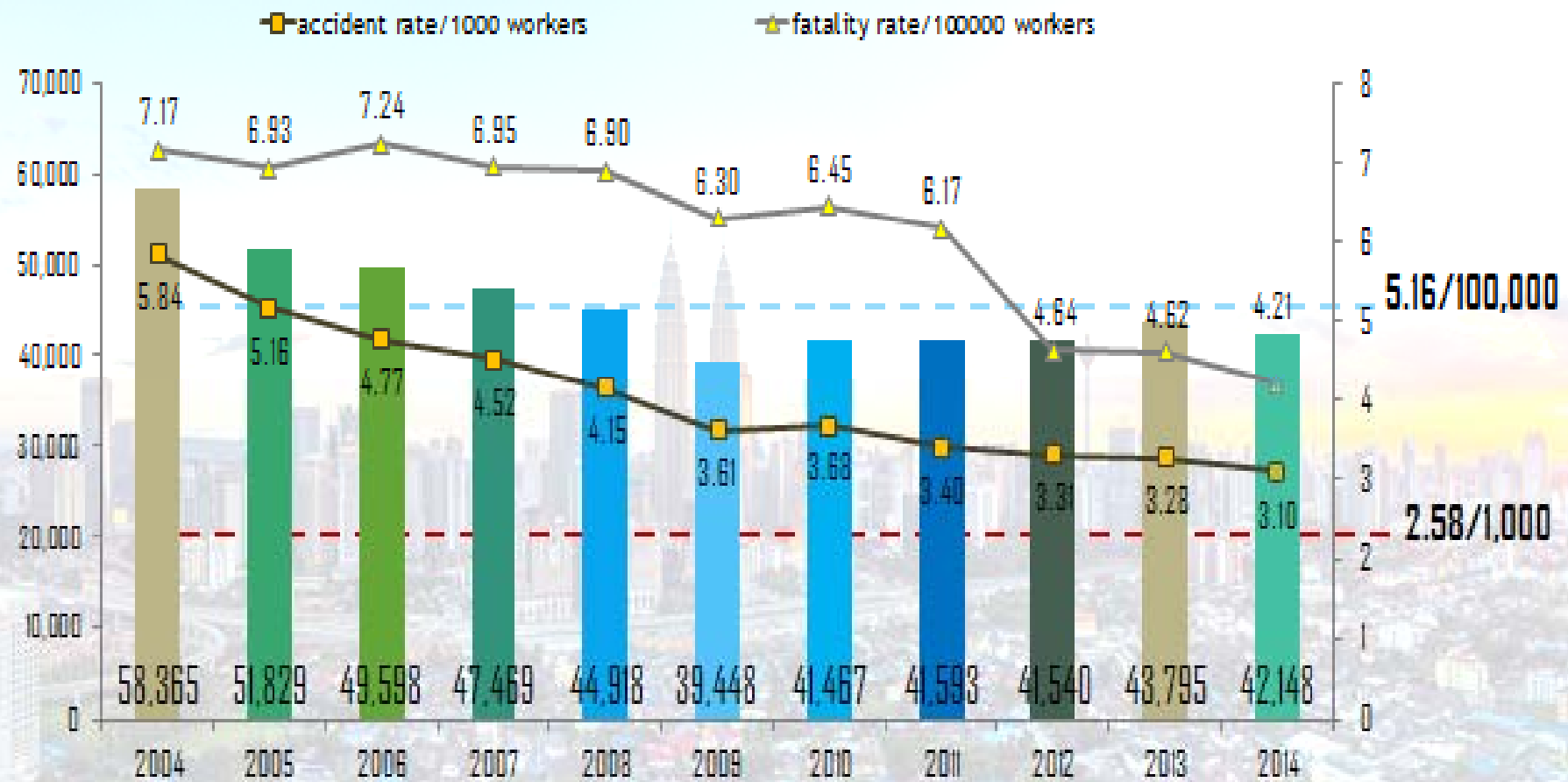
3. PROMOTIONAL ACTIVITIES

- GIVING TALKS
- ORGANISING CAMPAIGN
- DESIMINATION INFORMATIONAL INFORMATION

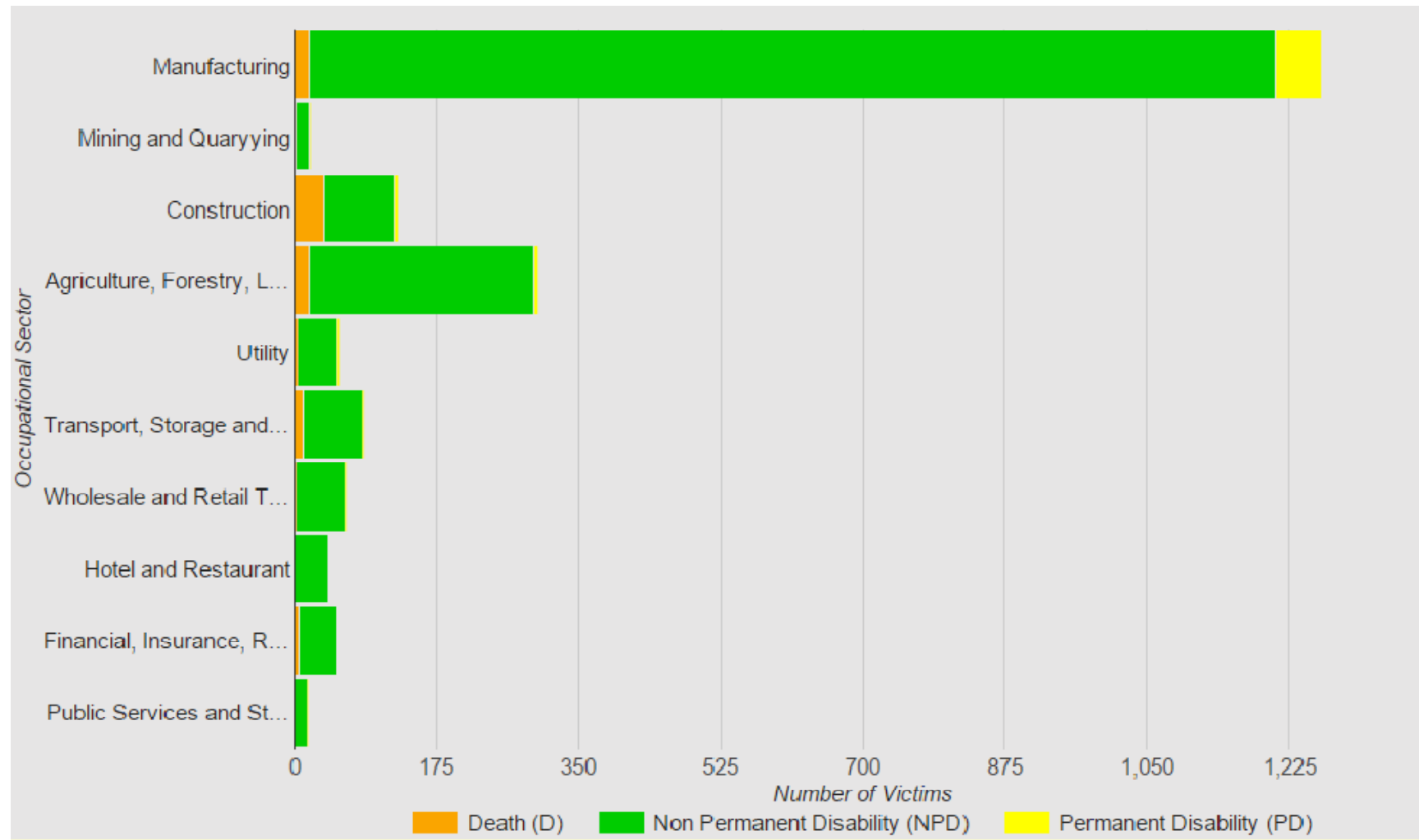


PERSPECTIVE OF OSH IN MALAYSIA

NATIONAL ACCIDENT RATE (2004-2014)



OCCUPATIONAL ACCIDENTS BY SECTOR (UNTIL AUGUST 2015)

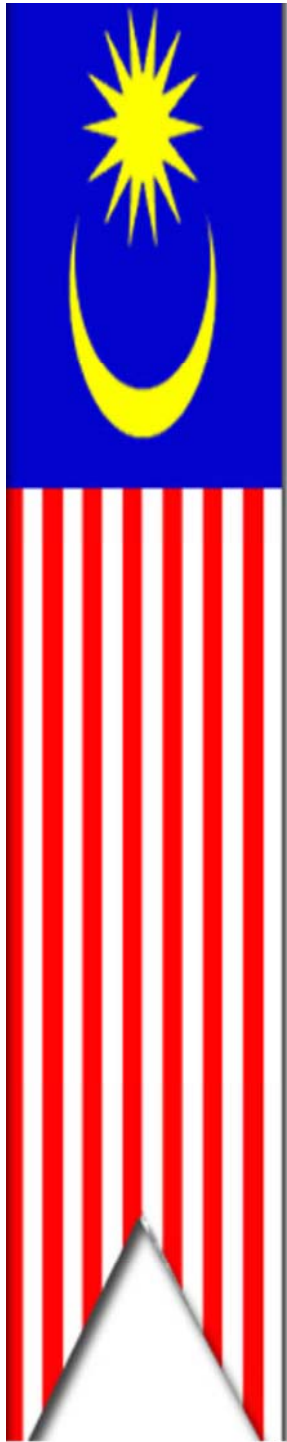


NOTIFICATION OF OCCUPATIONAL DISEASES AND POISONING YEAR 2005 – 2015 (TILL AUG.)

YEAR	NO. OF CASES
2005	319
2006	420
2007	594
2008	545
2009	791
2010	1426
2011	1198
2012	1792
2013	2588
2014	2648
2015 (Januari – Ogos)	4746 
TOTAL	17,067

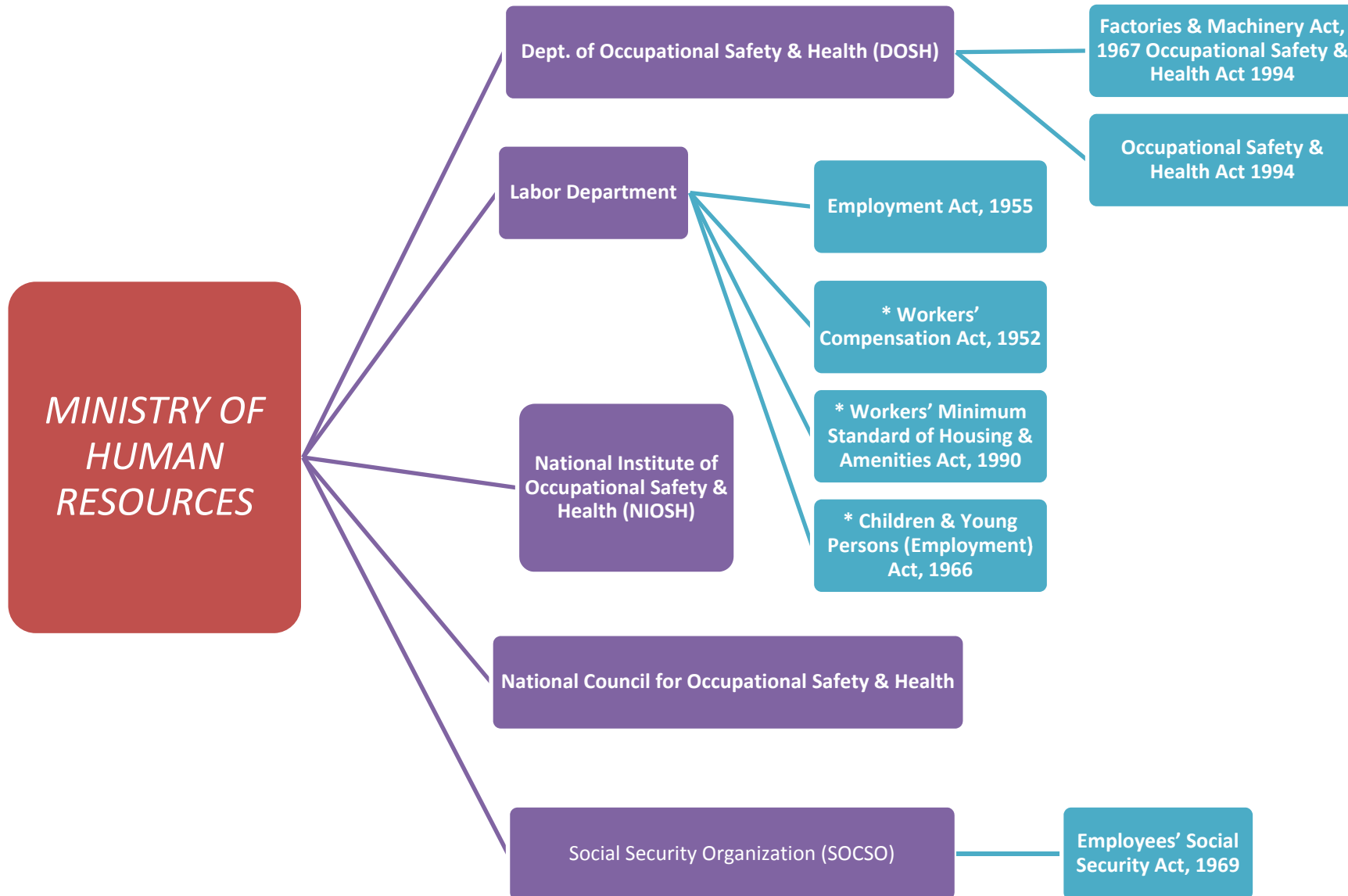
NUMBER OF CASES OF OCUPATIONAL DISEASE AND POISONING 2015 (Januari – Ogos)

Diseases	Cases
Occupational Lung Diseases (OLD)	86
Occupational Skin Diseases (OSD)	38
Occupational Noise Induced Hearing Loss (NIHL)	4287
Occupational Muscular - Skeletal Disorders (OMD)	208
Occupational Poisoning	27
Disease cause by Physical Agent	5
Disease cause by Biological Agent	67
Occupational Cancer	2
Psychosocial Problem	2
Other Types of Occupational Diseases	16
Non Occupational Diseases	8
Jumlah	4746

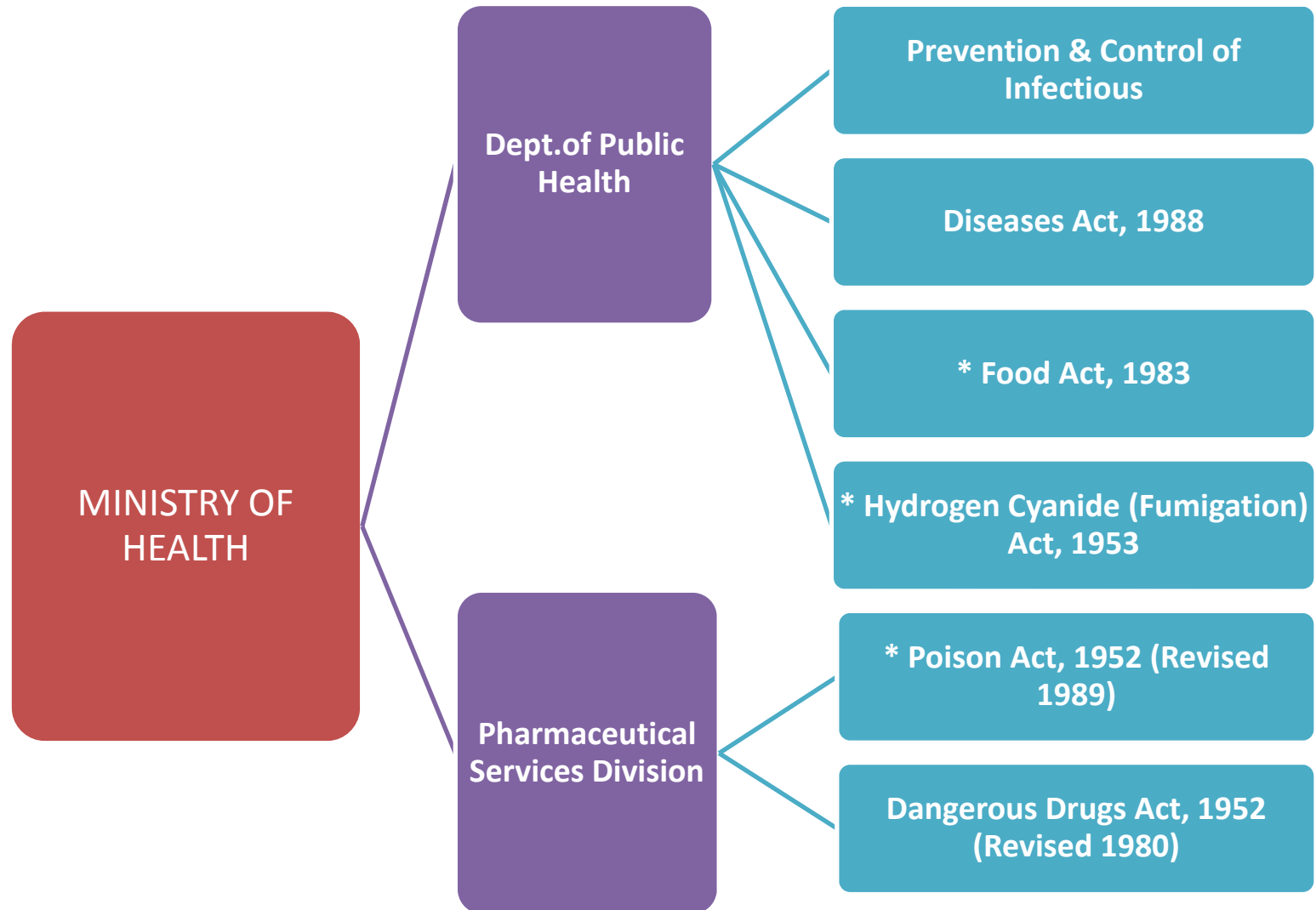


SAFETY AND HEALTH RELATED LAWS AND REGULATIONS

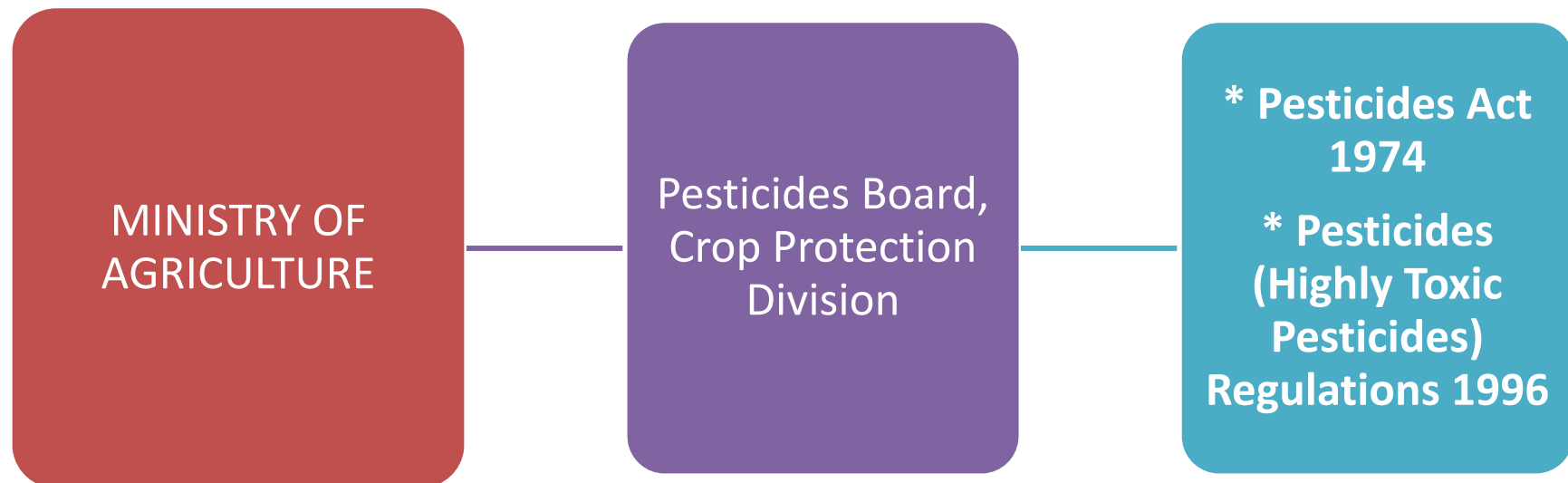
OSH RELATED LAWS AND REGULATIONS



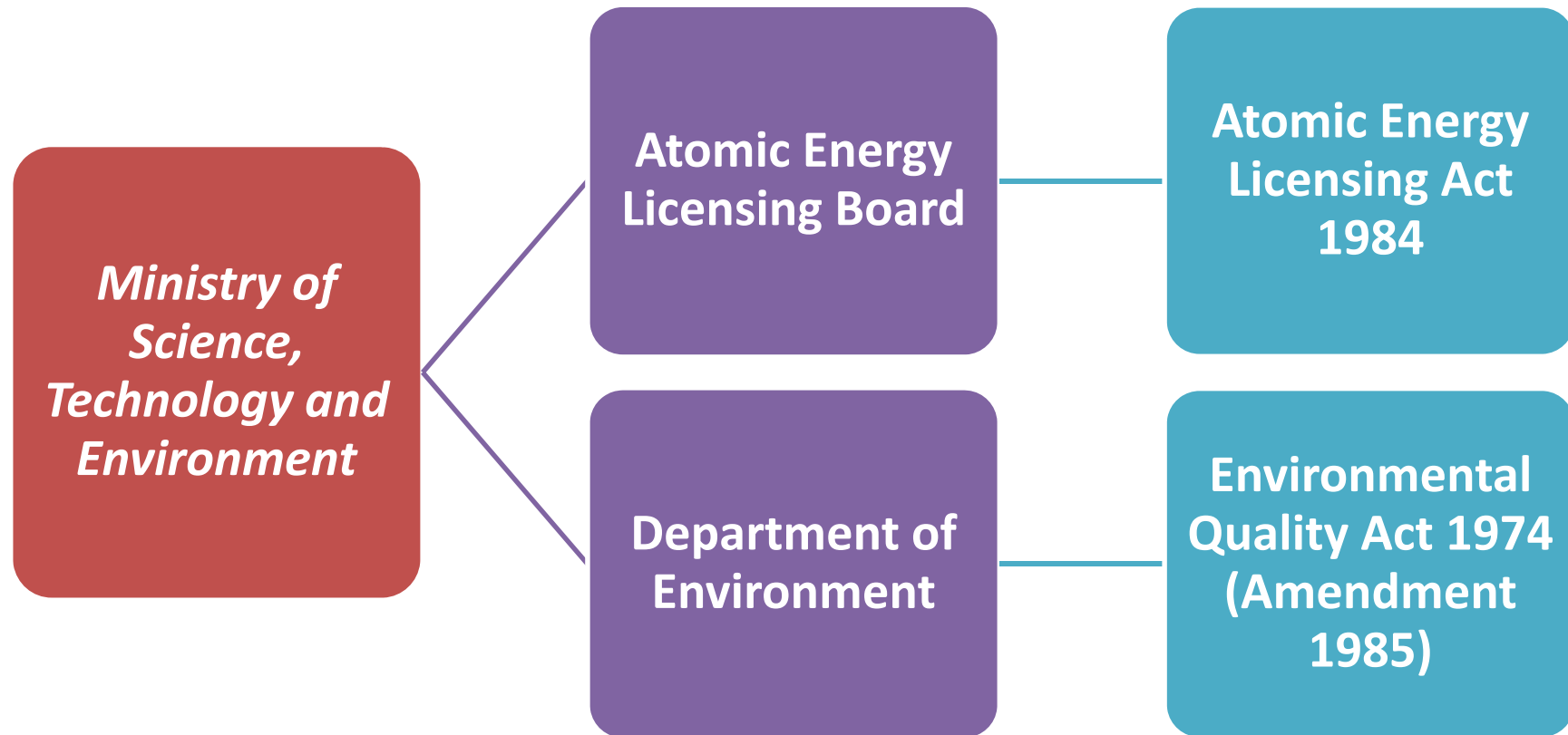
OSH RELATED LAWS AND REGULATIONS

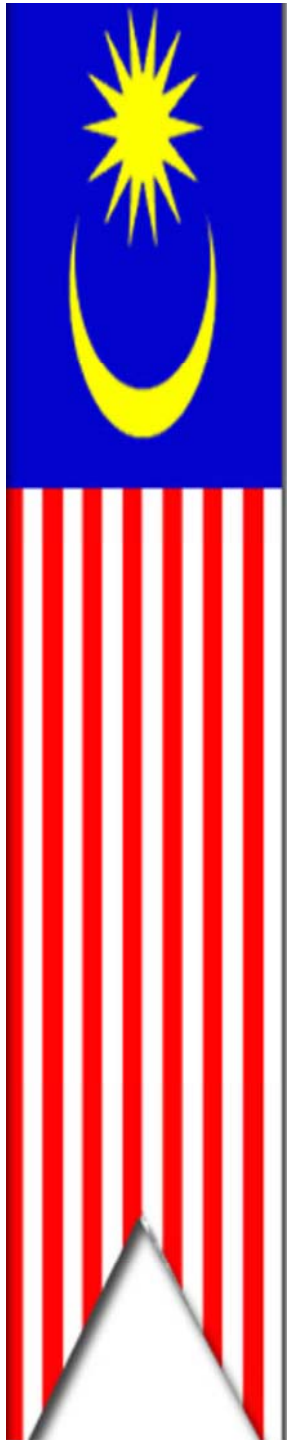


OSH RELATED LAWS AND REGULATIONS



OSH RELATED LAWS AND REGULATIONS





SAFETY OF EQUIPMENT AND FACILITIES

1. STATUTORY INSPECTIONS

- CERTIFICATED MACHINERY
- EVERY 15 MONTHS
- INTEGRITY OF MECHINERY

2. DESIGN APPROVAL

- ENSURING DESIGN OF DANGEROUS MACHINERY MEET THE STANDARD

3. REGULATE COMPETENT PERSONS AND COMPETENT FIRMS

- REGULATE THE COMPLIANCE WITH LEGAL REQUIREMENT AND REGULATIONS BY COMPETENT PERSONS AND COMPETENT FIRMS

STATUTORY INSPECTION

	2010	2011	2012	2013	2014	2015 (hingga Ogs)
CERTIFICATED MACHINERY						
STEAM BOILER	8,434	8,991	10,526	10,436	10,010	29385
UPV	74,375	72,894	80,290	80,962	87,033	51597
LIFT	25,758	27,682	33,169	30,746	32,700	21902
MOBILE CRANES	6,718	5,833	7,282	8,205	9,145	8560
HOISTING MACHINE	33,540	32,424	38,733	36,414	39,681	35335
FACTORY INSPECTION	11,258	10,520	18,813	17,506	18,891	10477
INSPECTION AT CONSTRUCTION SITE	4,024	3,388	6,554	7,329	8,229	4667

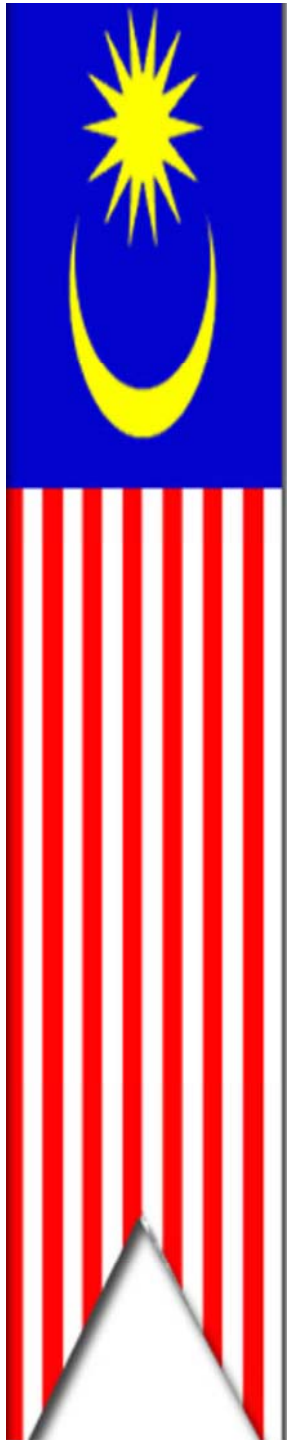
INDUSTRIAL HYGIENE INSPECTION

2005-2014

Year	IH Inspection	USECHH	CPL / CLASS	IH Monitoring	Ergonomics	Confined Space Audit
2005	328	954	114	189	139	35
2006	312	911	118	194	139	54
2007	444	1088	124	165	139	49
2008	436	1096	120	265	149	73
2009	469	987	147	256	208	145
2010	533	1096	145	332	210	134
2011	596	1095	146	254	212	116
2012	1533	2079	234	695	594	867
2013	2621	2408	225	676	1328	766
2014	2545	3365	214	558	1237	793

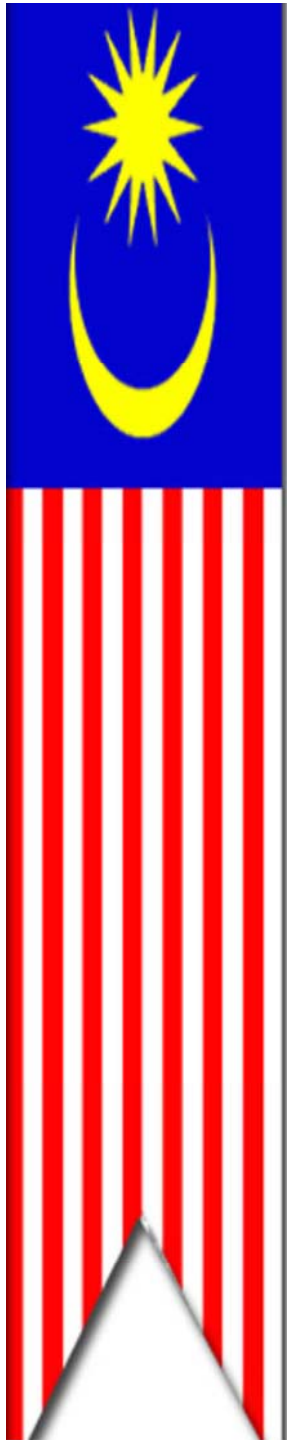
COMPETENT PERSONS

COMPETENT PERSON	2012	2013	2014
ASSESSOR (CHRA)	320	342	358
MAJOR HAZARD	25	23	16
OCCUPATIONAL HEALTH DOCTOR	471	647	752
NOISE MONITORING	121	123	142
HYGIENE TECHNICIAN	370	382	393
AUTHORISED GAS TESTER	929	1516	2265
ENTRY SUPERVISOR	863	1430	2194
ASSESSOR (INDOOR AIR QUALITY)	21	23	30
LIFT	123	169	268
SAFETY HEALTH OFFICERS	5306	5601	2406
SITE SAFETY SUPERVISOR	219	568	778
STEAM ENGINEER	2192	2362	2519
ICE ENGINEER	341	319	355
HOISTING MACHINE CP (Penumpang/Kren Menara/Gondola)	73	83	61



PROMOTION ACTIVITIES

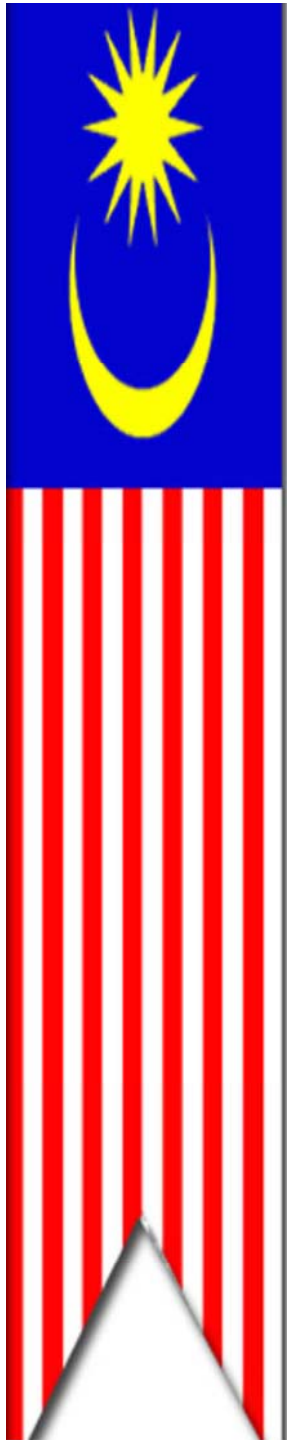
- National Campaigns / safety program / Award
- Compliance Support
- Talks / Briefing
- Workshop
- Exhibition
- Road show
- Association / NGO training Program
- TV & Radio Talks



ONE OF THE PROBLEM IN OSH

LIMITATION OF RESOURCES FOR OSH IMPLEMENTATION IN SME

- ALLOCATION OF BUDGET
- ALLOCATION OF TIME
- LIMITED WORKFORCE (MULTI RESPONSIBILITY)
- AWARENESS



COUNTERMEASURES

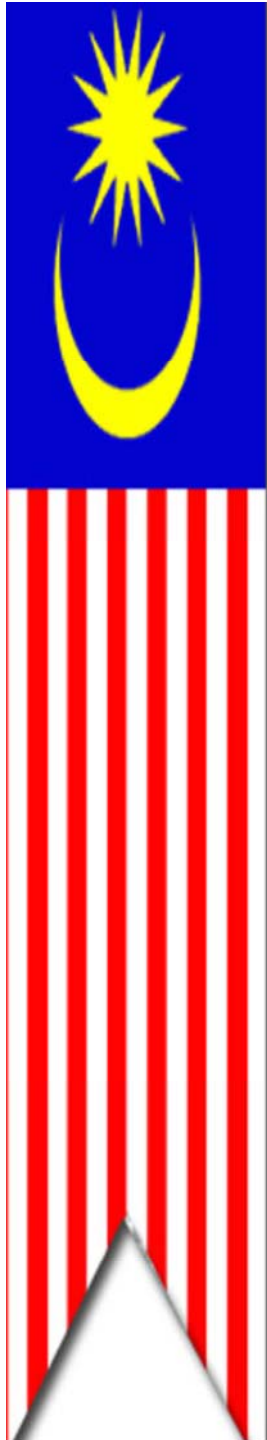
PROGRAMMES TO IMPROVE OSH
IMPLEMENTATION IN SME

1.COMPLIANCE SUPPORT

2.MENTOR MENTEE

3.SHARING BEST PRACTICES

4.GUIDELINES



“TERIMA KASIH”
Thank You For Your Kind Attention
<http://dosh.mohr.gov.my>

