

Country Report

(Bhutan)

Occupational Safety and Health



Ram Bahadur Khatiwara

Jr.Engineer

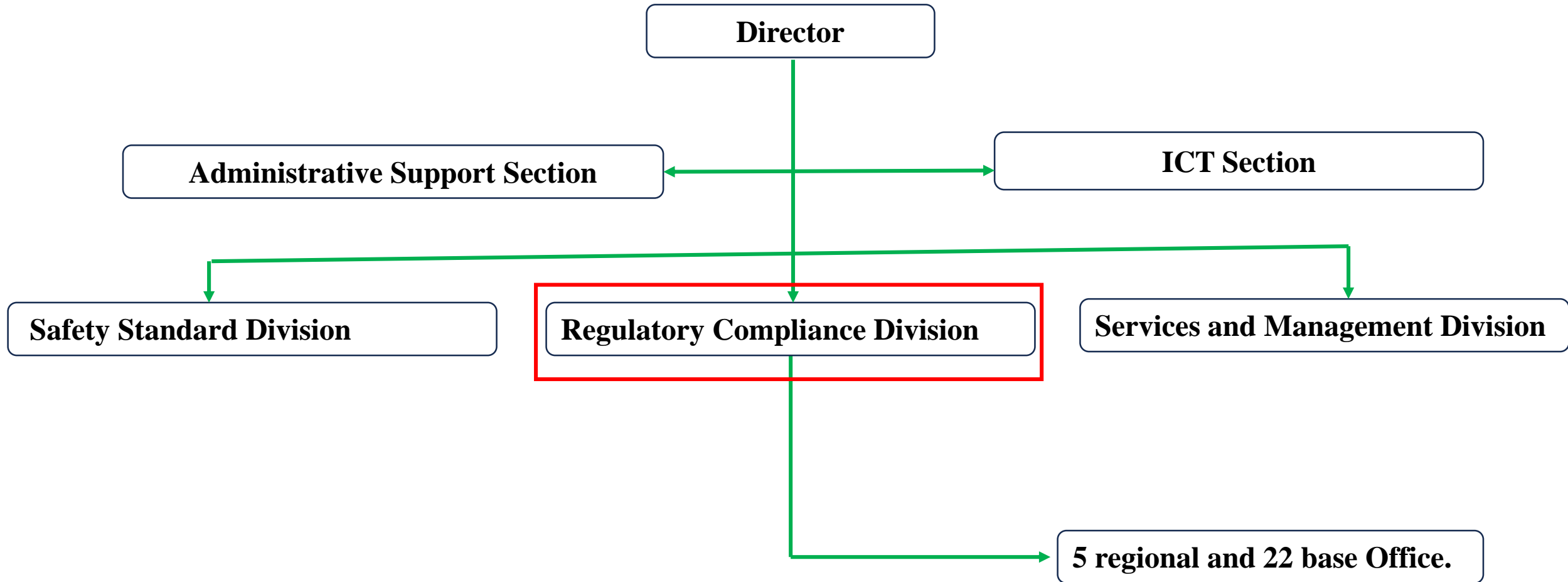
Bhutan Construction and Transport Authority

Ministry of Infrastructure and Transport

Presentation Outline

- Organization Chart
- statistics
- Safety and Health related Laws and Regulations
- Reporting system
- Workers' compensation
- Training/ Education programs by Bhutan Construction and Transport Authority (BCTA).
- Monitoring by BCTA
- Issues and Challenges
- Good Practices

Organization Chart(Bhutan Construction & Transport Authority)



Number of workplace accident by Major Sector (FY-2022-2023)

Major Sector	Fatal	Injury	Total	
			No.	%
Construction	6	6	12	31.6
Manufacturing	4	6	10	26.3
Services	4	3	7	18.4
Electricity and Water Supply	3	3	6	15.8
Wholesale and Retail Trade	1	1	2	5.3
Transport, Storage and Communications	1	0	1	2.6
Total	19	19	38	100

Source: Annual report 2022-2023,DoL

Number of workplace accidents by Major Cause

Major Cause	Fatal	Injury	Total	
			No.	%
Fall from height	6	8	14	36.8
Contact with electricity or electrical discharge	6	1	7	18.5
Struck by Moving Object (Flying/Falling Object)	1	4	5	13.2
Vehicle/Helicopter Accident	4	1	5	13.2
Contact with/by moving machinery	1	3	4	10.5
Crushing of body parts	0	1	1	2.6
Drowned	1	0	1	2.6
Slips/Trips	0	1	1	2.6
Total	19	19	38	100.0

Source: Annual report 2022-2023,DoL

Safety and Health related Laws and Regulations

- Labour and Employment Act, 2007



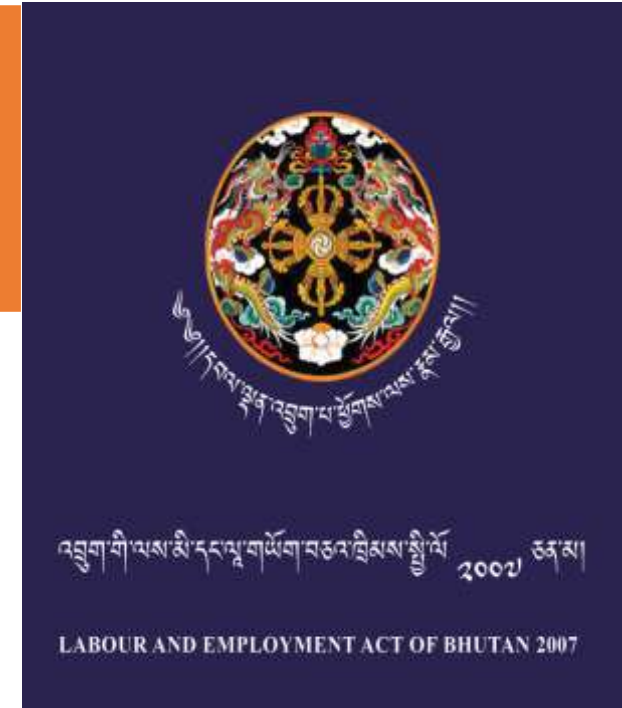
Regulation on Working Condition



Regulation on Occupational Health Safety and Welfare, 2022

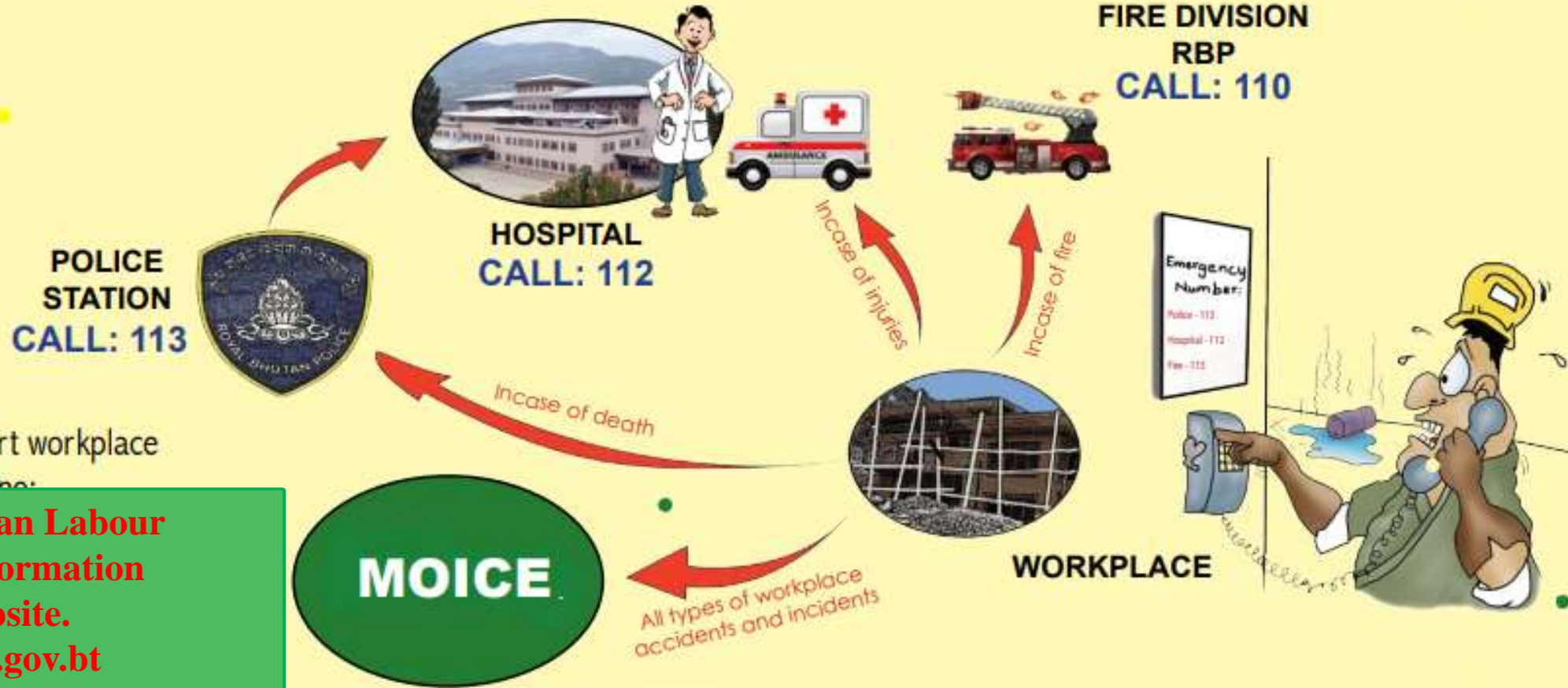


Regulation on Occupational Health and Safety in Construction Industry, 2022



WHERE TO REPORT?

Do not panic (ensure safety drill procedures are followed).



You can report workplace accident online:

**Go to Bhutan Labour Market Information System website.
www.blmis.gov.bt**

<https://mis.molhr.gov.bt/accident-reporting>

available

diale numbers clearly

CALL YOUR EMPLOYERS:

--	--	--	--	--	--	--	--

Workers' Compensation

- The amount of compensation for disability is determined through a lump sum payment, calculated by multiplying National minimum wage with an appropriate age factor, as well as the percentage of loss of earning capacity based on the severity of the disability.
- In case of death the amount of compensation is obtained by multiplying National Minimum Wage by appropriate age multiplying factor according to the age of the deceased

Amount of compensation paid by Major Sector

Major Sector	Amount (in millions)	%
Construction	2.05	24.6
Electricity and Water Supply	2.03	24.3
Finance, Insurance and Real Estate	1.4	16.8
Manufacturing	1.25	15.0
Transport, Storage and Communications	1.21	14.5
Services	0.41	4.9
Total	8.35	100

Training/ Education programs by Bhutan Construction and Transport Authority (BCTA).

- Total of 268 participant were trained in Construction Safety Supervisor.



Monitoring by BCTA

- In FY 2022-2023 total 260 ongoing Construction Sites were monitored.
- Around 47% of the Personal protective Equipment(Safety Helmets, Safety Boots, Reflective vest/jackets, Goggles, Welding mask/ goggles, Dust mask, Safety Harness /belts, Safety Gloves and Ear plug) were implemented at the site.
- Only 49 sites has trained OHS in charge.
- 95 (38%) Sites has First Aid Box available at the site.

OHS at Sites



Issues and Challenges (difficulties) in Implementing OSH in Bhutan.

- Lack of awareness/knowledge about OSH to the workers.
- Lack of trained government officials to train or monitor the safety at site.

Good Practices

- Provided Free training by the government
- Online platform for accident/incident reporting



BHUTAN

Believe

Thank You